

Date: 11 September 2023

Our Ref: KLQF/Letter1

Dear Parent or Carer

**Have your say: New Primary School in Queensferry and a new Secondary School for Kirkliston**

I am writing to let you know that two separate statutory consultations affecting schools in the Queensferry and Kirkliston areas open today.

***Establish a new primary school and nursery classes at Builyeon Road***

The first consultation proposes that a new non-denominational primary school and nursery classes be built in the 'Builyeon Road' housing development site in Queensferry. It also proposes two options for the new school's catchment area. Both catchment options would require changes to Echline and Queensferry Primary School's catchment areas. The new school will feed to Queensferry High School.

The new school would open in August 2027 at the earliest. Catchment changes would be effective from the November prior to the new school opening.

You can find out more information about this consultation and give us your views on the Council's website at:

[www.edinburgh.gov.uk/builyeonroad](http://www.edinburgh.gov.uk/builyeonroad)



We have also organised a public meeting with presentation and question and answer session which anyone can attend, as below:

Venue	Date	Time
Queensferry High School	Tuesday, 3 October	18:30 – 20:30

In addition, we will hold drop-in information events at Echline Primary School and Queensferry Primary School where you can speak with a Council Officer, find out more about the proposals and share your views:

Date	Time	Venue
Queensferry Primary School	Tuesday, 26 September	15:00 – 19:00
Echline Primary School	Thursday, 28 September	15:00 – 19:00

**Strategic Asset Planning Team**

Level 1.6 Waverley Court, 4 East Market Street, Edinburgh EH8 8BG

[kirklistonhs@edinburgh.gov.uk](mailto:kirklistonhs@edinburgh.gov.uk) / [builyeonroad@edinburgh.gov.uk](mailto:builyeonroad@edinburgh.gov.uk)

## ***Establish a new secondary school on the Kirkliston Leisure Centre site***

The second consultation proposes that Kirkliston Primary School feed to a new secondary school located on the existing Kirkliston Leisure Centre site. The catchment area of the new secondary school would be the same as that of the existing Kirkliston Primary School. This requires a change to Queensferry High School's catchment area.

The new school could open in August 2028 at the earliest. Catchment changes would only apply to new S1 pupils. There would be no mandatory transfer for pupils already attending another school. All addresses in the existing Kirkliston Primary School catchment area are directly affected by these proposals.

You can find out more information about this consultation and give us your views on the Council's website at:

[www.edinburgh.gov.uk/kirklistonhs](http://www.edinburgh.gov.uk/kirklistonhs)



We have also organised a public meeting with presentation and question and answer session which anyone can attend, as below:

Venue	Date	Time
Kirkliston Primary School	Tuesday, 10 October 2023	18:30 – 20:30

I enclose copies of summary consultation papers for both these consultations. You can find more information, including the full consultation papers at the links above.

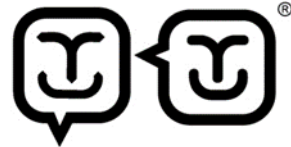
Both consultations run from Monday 11 September 2023 to Tuesday 31 October 2023. Comments on the proposals for both consultations should be submitted by **no later than 5pm on Tuesday 31 October 2023**.

Following the conclusion of the consultation period a report on the Outcomes of the Consultations will be presented to the Education, Children and Families Committee in January 2024 and the report will be made publicly available three weeks before the Council meeting. Further details of this process are contained in the full statutory consultation papers.

Yours sincerely



Robbie Crockatt  
Strategic Asset Planning Manager



**HAPPY TO TRANSLATE**

ترجمہ کے لئے حاضر آماندہر سہجہ انوباد کررب  
بسعندا توفير الترجمة MOŻEMY PRZETŁUMACZYĆ 很樂意翻譯

You can get this document on tape, in Braille, large print and various computer formats if you ask us. Please contact the Interpretation and Translation Service at [its@edinburgh.gov.uk](mailto:its@edinburgh.gov.uk) quoting the unique reference **23-9044B**.

**Strategic Asset Planning Team**

Level 1.6 Waverley Court, 4 East Market Street, Edinburgh EH8 8BG

[kirklistonhs@edinburgh.gov.uk](mailto:kirklistonhs@edinburgh.gov.uk) / [builyleonroad@edinburgh.gov.uk](mailto:builyleonroad@edinburgh.gov.uk)

# **Proposal to establish a new non-denominational Primary School and Nursery Classes at Builyeon Road and undertake primary school catchment changes in Queensferry**

## **Summary Paper**

**GIVE US YOUR VIEWS:**

**[www.edinburgh.gov.uk/builyeonroad](http://www.edinburgh.gov.uk/builyeonroad)**



### **What is being proposed?**

- The establishment of a new 11 or 12 class non-denominational primary school and nursery within the 'Builyeon Road' housing development site and the formation of a new catchment area incorporating elements of the existing Echline and Queensferry Primary Schools.
- Maps showing the proposed school location and proposed catchment options have been included within this summary paper.

### **Where will the new primary school and nursery be located?**

- It is proposed that the new school will be built on a two-hectare site on the north side of the 'Builyeon Road' housing development site.

### **Why do we need a new primary school in Queensferry?**

- Significant new housing has been built in the Queensferry area in the previous ten years with more housing expected. The existing school infrastructure is not large enough to accommodate the pupil numbers expected going forward.

### **What are the implications for existing secondary schools?**

- The new primary school will feed into Queensferry High School.

### **Who will the changes affect?**

- Two options have been proposed for the new primary school catchment area. The proposals include sections from Echline and Queensferry Primary Schools existing catchments.
- Maps showing the two proposed catchment options have been included at the end of this summary paper.

### **When would the changes come into effect?**

- If the proposal is approved by the Council, the new school could open in August 2027 at the earliest.

### **Why are we consulting?**

We want to hear the views of anyone affected by the proposal. There is also a legal obligation to carry out a statutory consultation under the Schools (Consultation) (Scotland) Act 2010 as amended by the Children and Young people (Scotland) Act 2014.

## How will I know if my views have been considered?

All comments made during the statutory consultation period will be recorded and represented in a final 'Outcomes of the Consultation Report'. This report will be considered by the Council's Education, Children and Families Committee in January 2024. The report will be published three weeks in advance of the Council meeting and parents of pupils attending affected schools and anyone who has responded to the consultation will be notified of its publication.

## How can I find out more about the proposal or make my views heard?

If you want more information you can find the full consultation paper and other supporting information at [www.edinburgh.gov.uk/builyeonroad](http://www.edinburgh.gov.uk/builyeonroad) where you can find a questionnaire.

We have also organised a public meeting which anyone can attend, as below:

Venue	Date	Time
Queensferry High School	Tuesday, 3 October	18:30 – 20:30

In addition, we will hold drop-in public information events at Echline Primary School and Queensferry Primary School where you can speak with a Council Officer, find out more about the proposals and share your views:

Venue	Date	Time
Queensferry Primary School	Tuesday, 26 September	15:00 – 19:00
Echline Primary School	Thursday, 28 September	15:00 – 19:00

The meeting will open with a short presentation followed by a question and answer session. We will take a note of the meeting and all of the points made will be captured in the final 'Outcomes of the Consultation Report'.

Please email [builyeonroad@edinburgh.gov.uk](mailto:builyeonroad@edinburgh.gov.uk) by Tuesday 26 September 2023 if you need translation services at the meeting.

It would be helpful if you could take time to complete our short survey – you can find it easily online at [www.edinburgh.gov.uk/builyeonroad](http://www.edinburgh.gov.uk/builyeonroad).

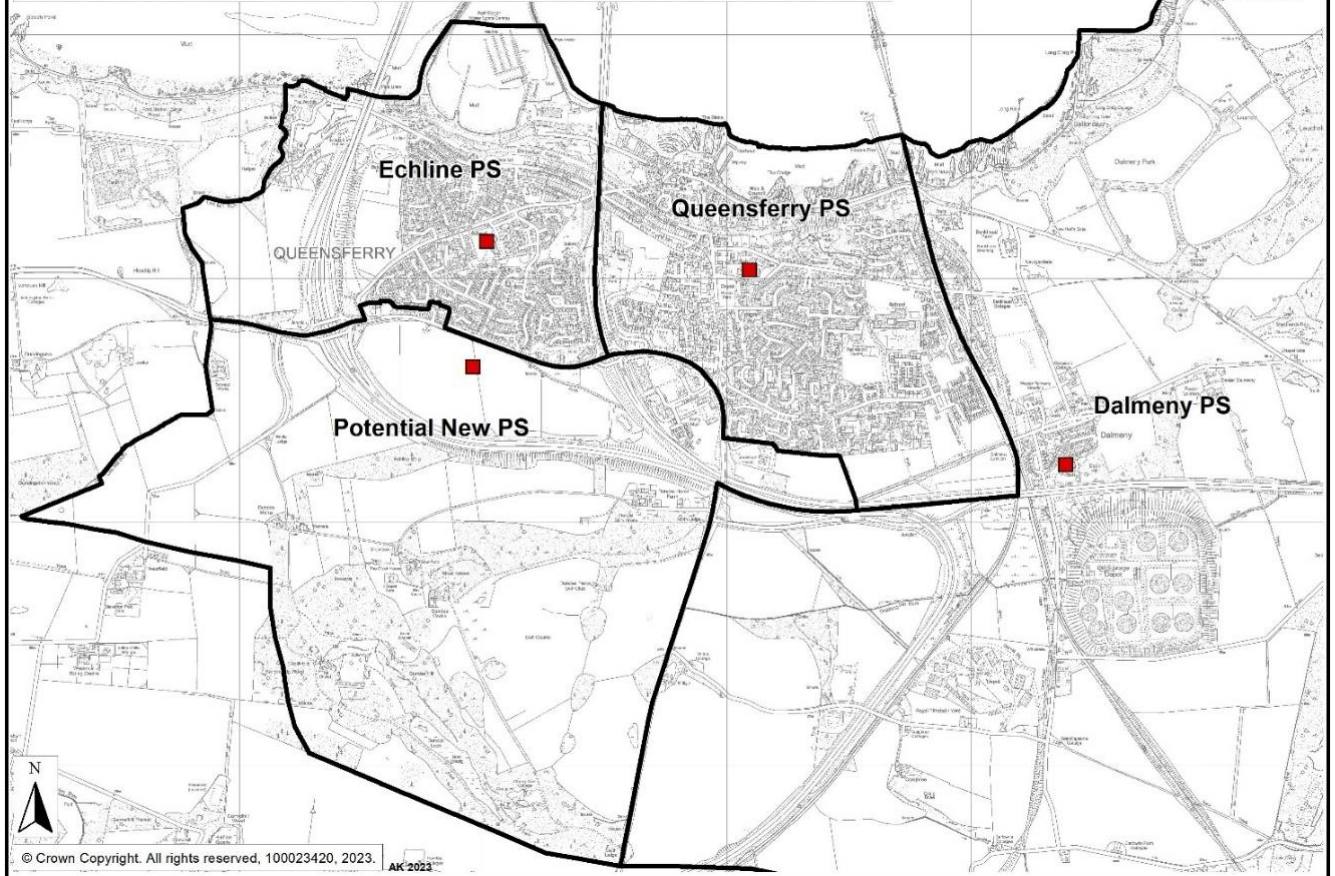
If you don't have internet access then you can view the full consultation paper at Echline Primary School, Queensferry Primary School or South Queensferry Library.

You can also email comments to us directly at [builyeonroad@edinburgh.gov.uk](mailto:builyeonroad@edinburgh.gov.uk) or if you prefer they can be posted to the address below:

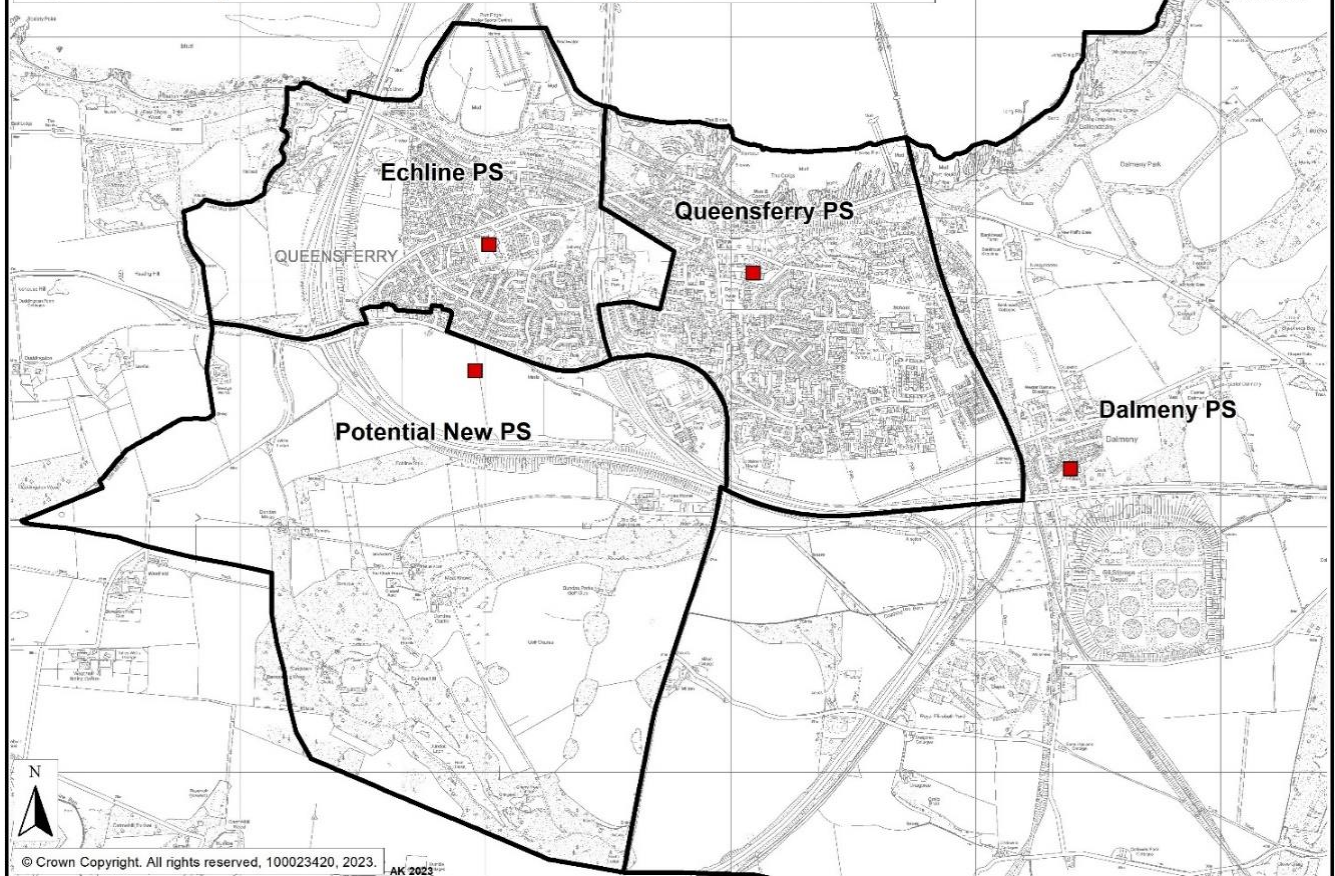
FAO: Alex Kerridge  
Strategic Asset Planning (Builyeon Road)  
Business Centre 1.6  
City of Edinburgh Council  
Waverley Court  
Level 1:2, 4 East Market Street  
Edinburgh EH8 8BG

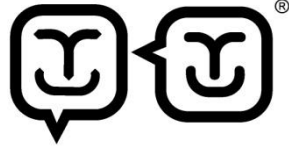
**All comments should arrive by 5pm on Tuesday 31 October 2023.**

**Option 1: Ferrymuir and west South Scotstoun to New School**



**Option 2: Ferrymuir to New School and Ferrymuir Gait to Echline**





## HAPPY TO TRANSLATE

আনন্দের সঙ্গে অনুবাদ করব ترجمے کے لئے حاضر

يسعدنا توفير الترجمة MOZEMY PRZETŁUMACZYĆ 很乐意翻译

You can get this document on tape, in Braille, large print and various computer formats if you ask us. Please contact the Interpretation and Translation Service at [its@edinburgh.gov.uk](mailto:its@edinburgh.gov.uk) quoting the unique reference: **23-9034B.**

# Statutory Consultation Proposing a new Kirkliston High School on the Kirkliston Leisure Centre site aligned to Kirkliston Primary School

## Summary Consultation Paper

GIVE US YOUR VIEWS:

[www.edinburgh.gov.uk/kirklistonhs](http://www.edinburgh.gov.uk/kirklistonhs)



### What is being proposed?

- The proposal is that Kirkliston Primary School will be the sole feeder primary school to a new secondary school located on the existing Kirkliston Leisure Centre site. The catchment area of the new secondary school will be the same as that of the existing Kirkliston Primary School.
- Maps showing the existing and proposed catchment areas have been included within this summary paper.
- The new school could open in August 2028 at the earliest.
- The new school would be built over 4 storeys adjacent to the new Early years and Primary 1 annexe currently under construction. It would include publicly accessible sports provision including an all-weather pitch.
- The design of the school teaching facilities will be capable of expansion to a 1200 pupil capacity if deemed necessary in the future.
- Design development for the school would include a full traffic impact assessment which would set out the measures that may need to be put in place to limit congestion or parking issues in surrounding areas.

### Who will the changes affect?

- The proposed changes will affect families and residents in the Kirkliston and Queensferry areas.
- From the November prior to the new school opening, P7 pupils from Kirkliston Primary School will attend the new secondary school when they reach S1.
- Kirkliston pupils already attending Queensferry High School or any other school will not be expected to change schools.
- It is proposed that a sibling guarantee be offered to children who have an older sibling at Queensferry High School. The details of the guarantee can be found in the full consultation paper.
- When would the changes come into effect?

- The new school could open in August 2028 at the earliest. The new school's catchment area would come into effect in the November prior to the new school opening.

### **Why are these proposals being considered?**

- It is anticipated that Queensferry High School's current 1,200 pupil capacity will be exceeded in 2025 due to housing growth in the area.
- Previous engagement suggested that the Queensferry and Kirkliston communities thought there should be a new secondary school built in Kirkliston to provide the additional spaces required. Lots of people suggested different sites for a new school. Some people suggested the Kirkliston Leisure Centre site.
- While further engagement has shown that many people do not think the Leisure Centre is the right site for a new school, it is the only site that is within Council control and is likely to obtain planning permission for a new high school development.
- Alternative sites identified are either located within Greenbelt or Countryside policy areas; or have been identified as areas at risk of flooding; or are safeguarded for a second runway at Edinburgh airport. Therefore, it is unlikely that a proposal for a new high school on any of these locations would be supported by Planning.

### **Why are we consulting?**

- Previous informal engagement has helped shape these proposals which now forms the basis for this formal statutory consultation. To establish a new school the Council has a legal obligation to carry out a statutory consultation under the Schools (Consultation) (Scotland) Act 2010 as amended by the Children and Young people (Scotland) Act 2014.

### **How will I know if my views have been considered?**

- All comments received during the statutory consultation period will be recorded and represented in a final 'Outcomes of the Consultation' report that we expect to be considered by Council in January 2024. The report will be published three weeks in advance of the Council meeting and parents of pupils attending affected schools and anyone who has responded to the consultation will be notified of its publication.

### **How can I find out more about the proposals or make my views heard?**

If you want more information, you can find the full consultation paper and other supporting information at [www.edinburgh.gov.uk/kirklistonhs](http://www.edinburgh.gov.uk/kirklistonhs)



We have also organised a public meeting which anyone can attend, as below:

Venue	Date	Time
Kirkliston Primary School	Tuesday, 10 October 2023	18:30 – 20:30

The meeting will open with a short presentation followed by a question-and-answer session. We will take a note of the meeting and all the points made will be captured in the final 'Outcomes of the Consultation Report'.

Please email [kirklistonhs@edinburgh.gov.uk](mailto:kirklistonhs@edinburgh.gov.uk) by 3 October 2023 if you need translation services at the meeting.

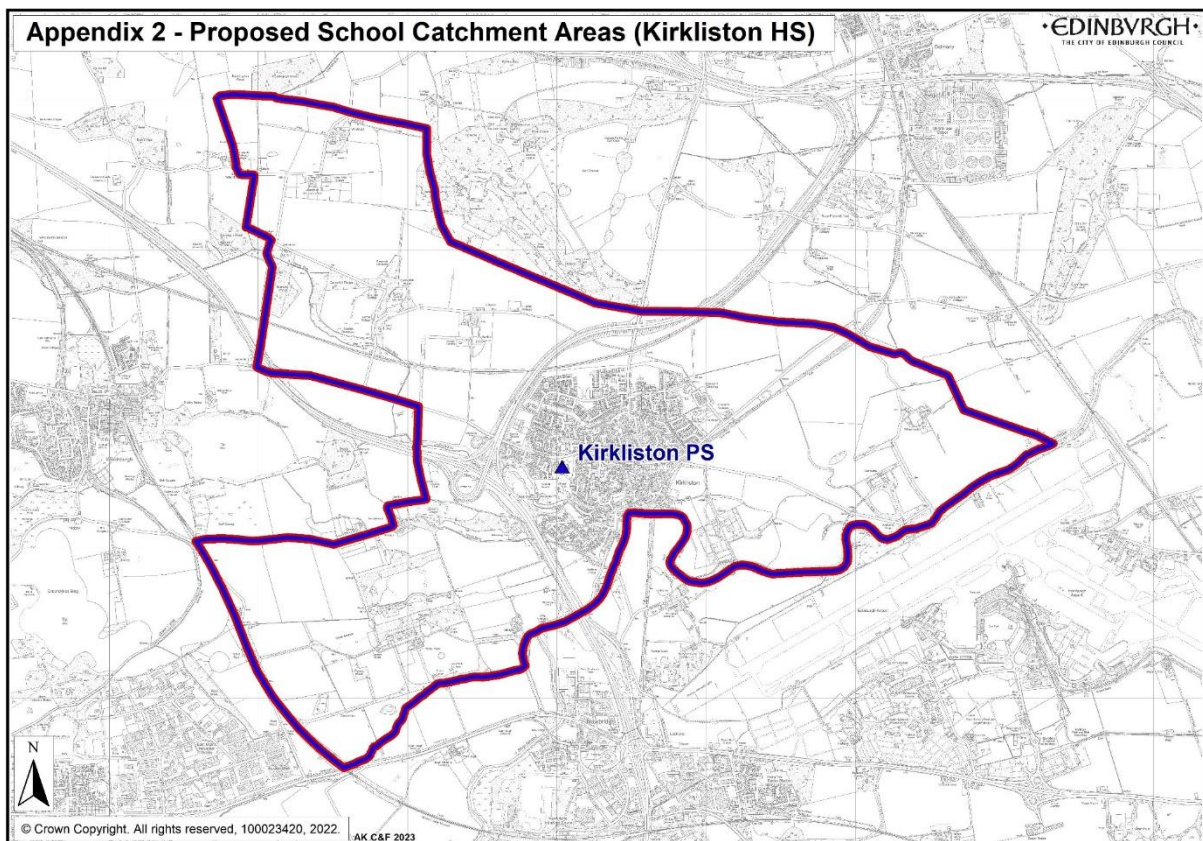
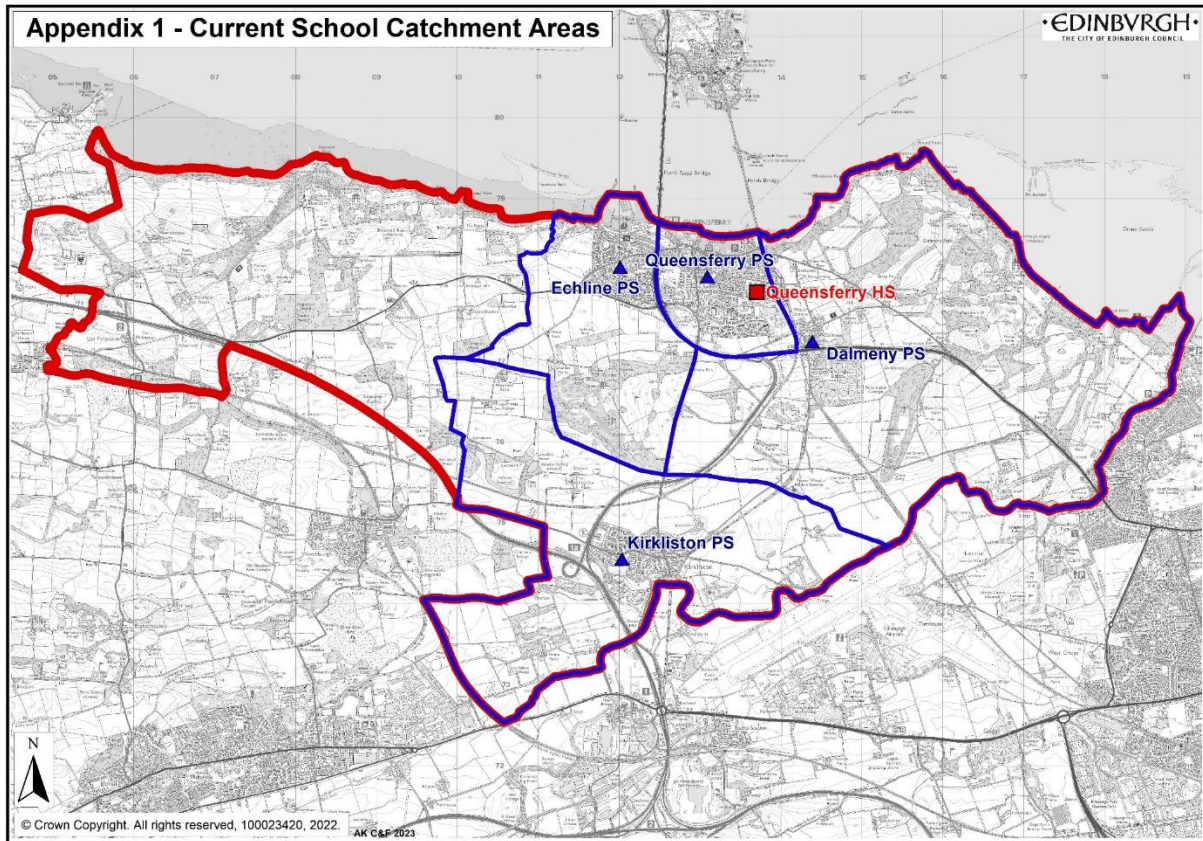
It would be helpful if you could take time to complete our short survey – you can find it online at [www.edinburgh.gov.uk/kirklistonhs](http://www.edinburgh.gov.uk/kirklistonhs). If you don't have internet access, then you can view the full consultation paper at Kirkliston Primary School, Kirkliston Library or Queensferry High School.

You can also email comments to us directly at [kirklistonhs@edinburgh.gov.uk](mailto:kirklistonhs@edinburgh.gov.uk) or if you prefer, they can be posted to:

FAO: Robbie Crockatt  
Strategic Asset Planning  
City of Edinburgh Council  
Waverley Court  
4 East Market Street  
Edinburgh, EH8 8BG

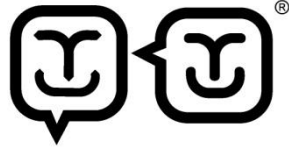
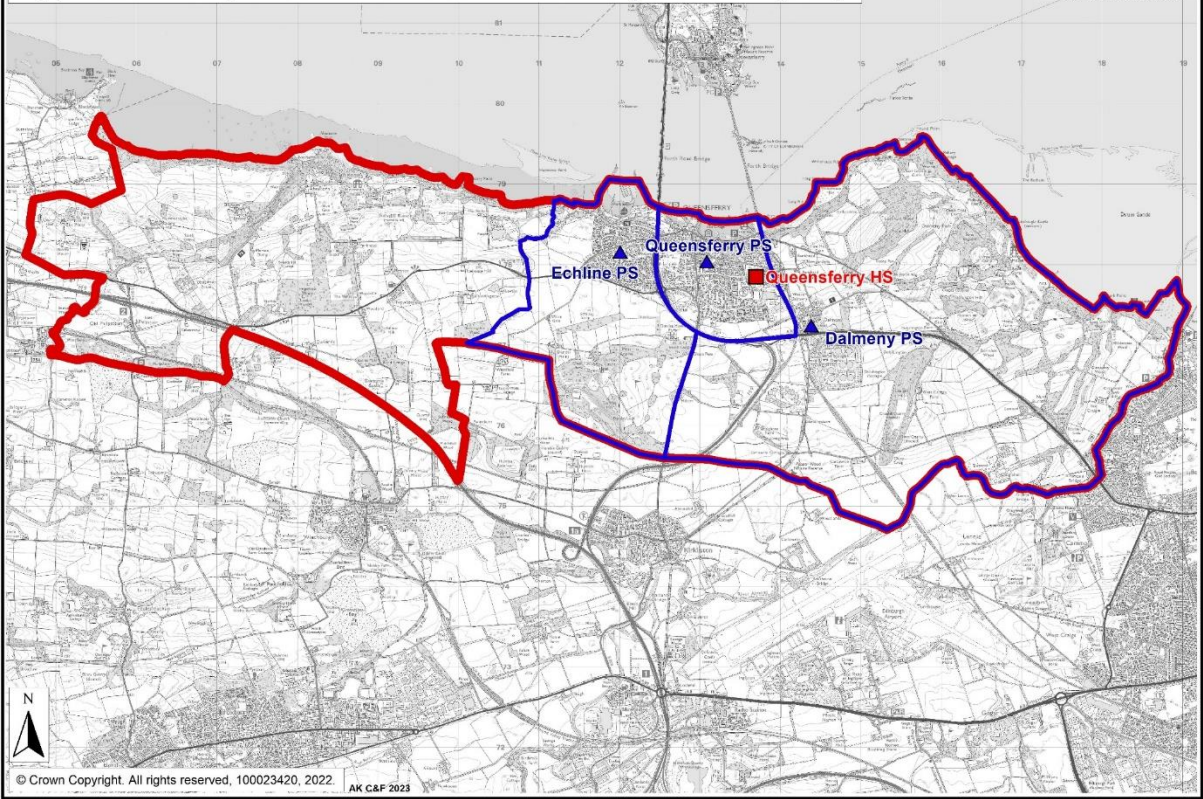
**All comments should arrive by 5pm on Tuesday, 31 October 2023.**

# Existing & Proposed School Catchment Areas



## Appendix 2 - Proposed School Catchment Areas (Queensferry HS)

•EDINBURGH•  
THE CITY OF EDINBURGH COUNCIL



HAPPY TO TRANSLATE

ترجمہ کے لئے حاضر آناںہدےر سہجے انہواد کرہب

بسعدهنا توفیر الترجمة MOZEMY PRZETŁUMACZYĆ 很樂意翻譯

You can get this document on tape, in Braille, large print and various computer formats if you ask us. We can also give information on community language translations. Please contact the Interpretation and Translation Service at [its@edinburgh.gov.uk](mailto:its@edinburgh.gov.uk) quoting the unique reference: **23-9044A.**