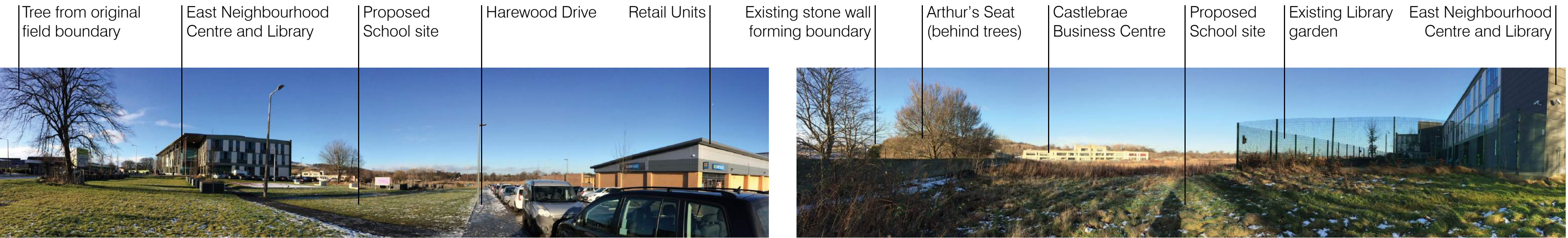



Replacement Castlebrae High School

The Site



**Have your say...**

Online:
Email:

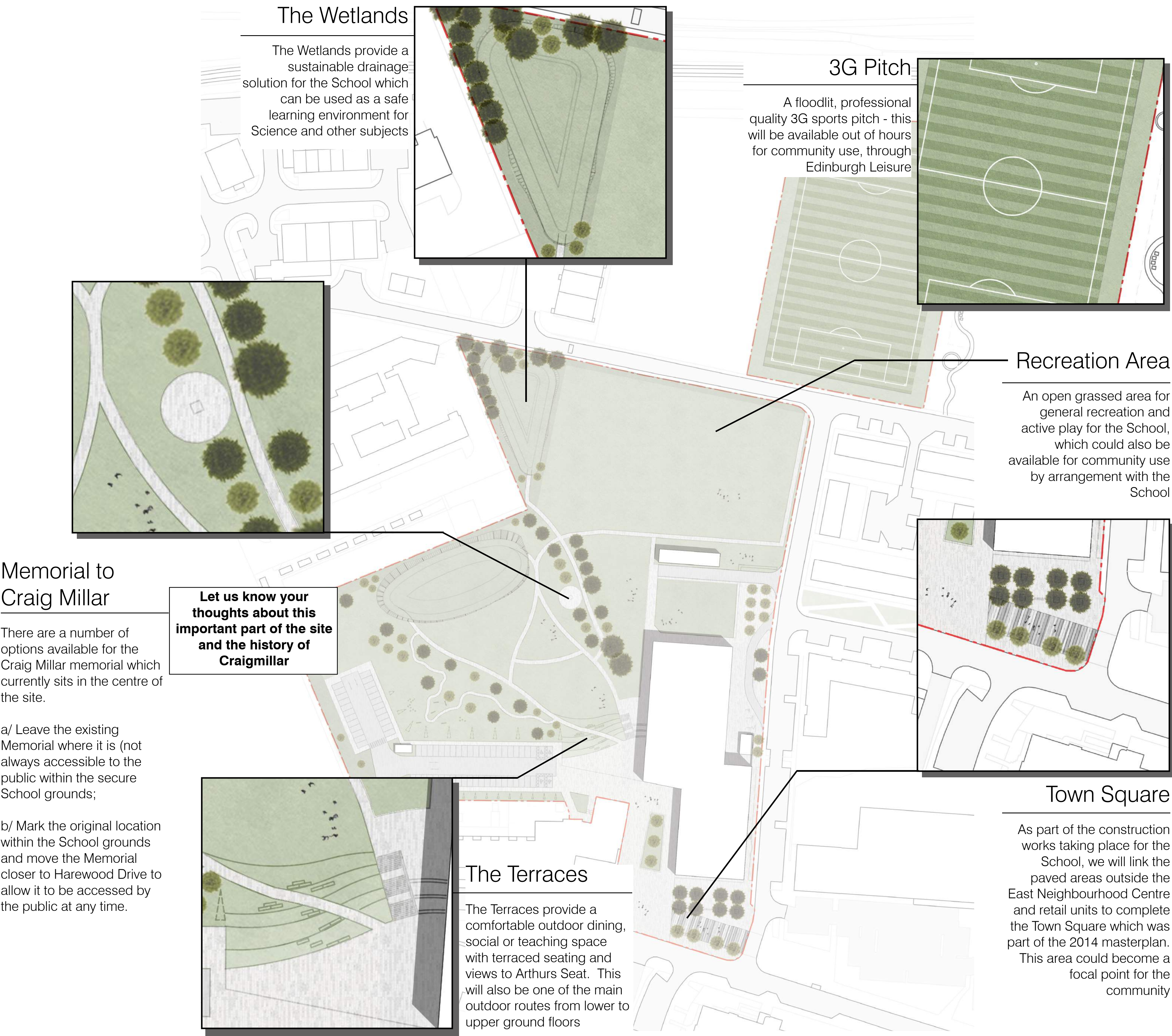
www.edinburgh.gov.uk/newcastlebraehighschool
newcastlebrae@edinburgh.gov.uk

Comments can be made until Monday 4th March



Replacement Castlebrae High School

External Spaces



Futureproofing Castlebrae

The initial proposals are designed to accommodate 700 pupils. As part of the design process, the team have been asked to consider how the School could be extended to accommodate up to 1200 pupils as part of an Expansion Strategy.

Phase 2 will involve an extension to the north of the School building including additional teaching accommodation, along with an enlarged car park and extra Sports pitch.

The team have also considered how best to extend a School with minimal disruption to the School's day to day operation.

- 1. Phase 1 Building
- 2. Phase 2 Extension
- 3. Phase 1 Car Park
- 4. Phase 2 Car Park
- 5. Phase 1 Sports Pitch
- 6. Phase 2 Sports Pitch



Have your say...

Online: www.edinburgh.gov.uk/newcastlebraehighschool

Email: newcastlebrae@edinburgh.gov.uk

Comments can be made until Monday 4th March

Replacement Castlebrae High School

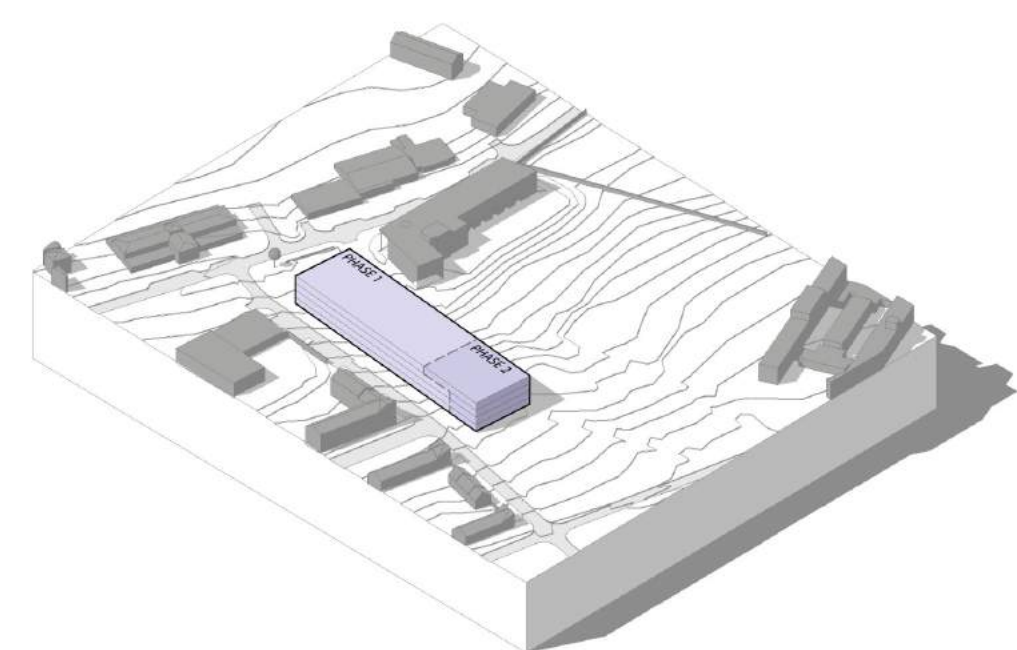
The Building



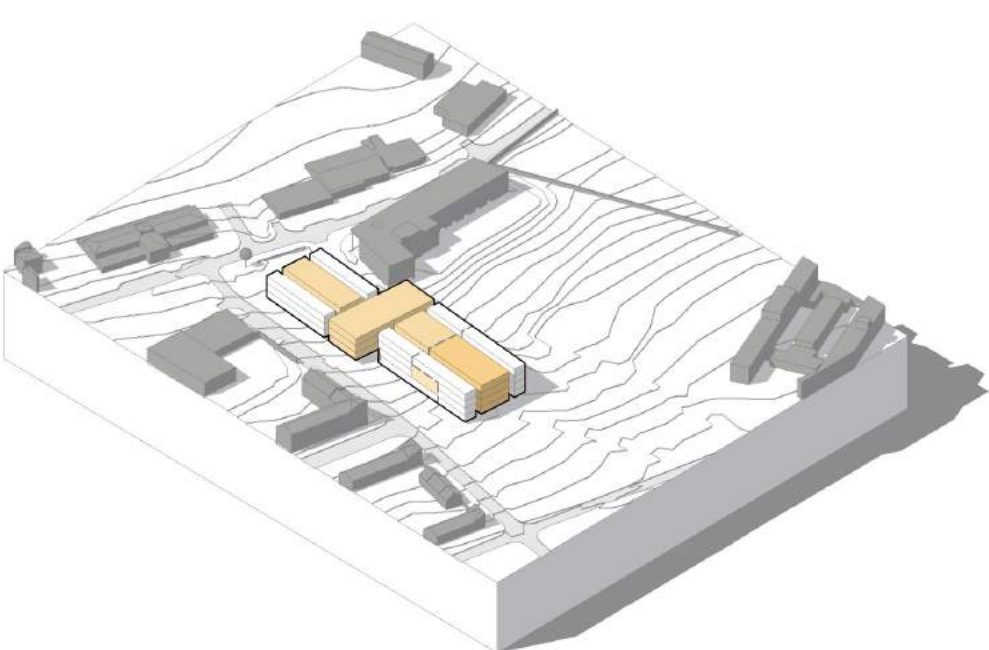
CASTLEBRAE
COMMUNITY HIGH SCHOOL



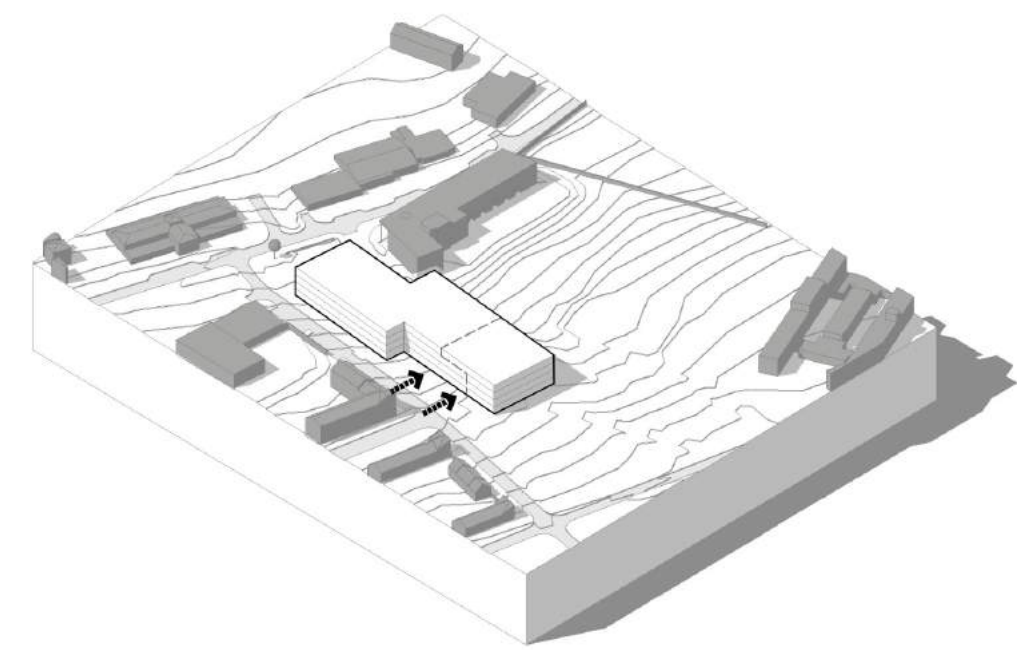
View from Niddrie Mains Road



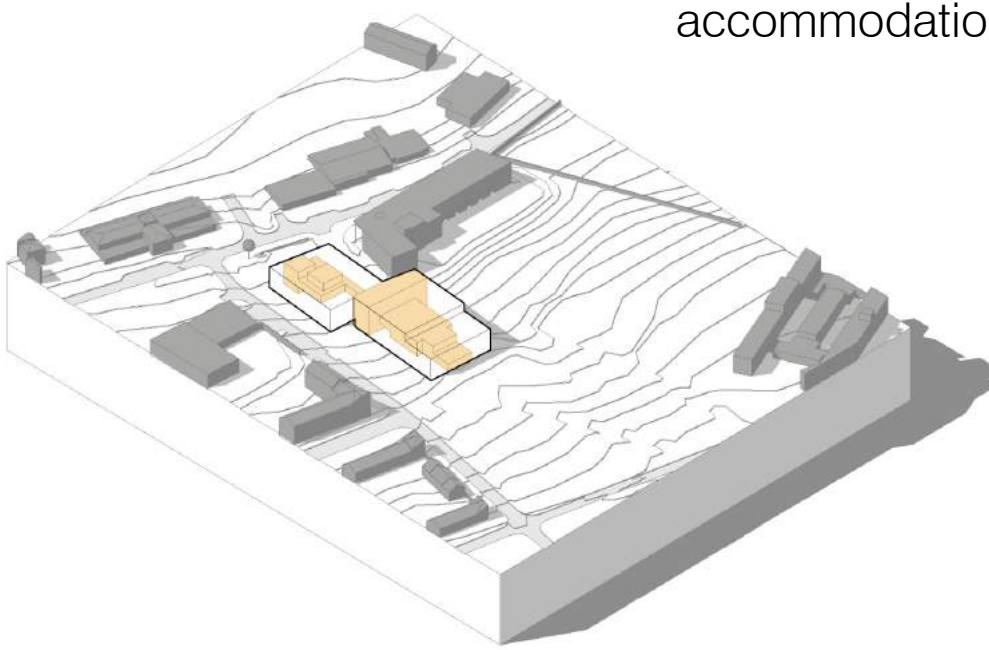
01 Start with a **Superblock** form



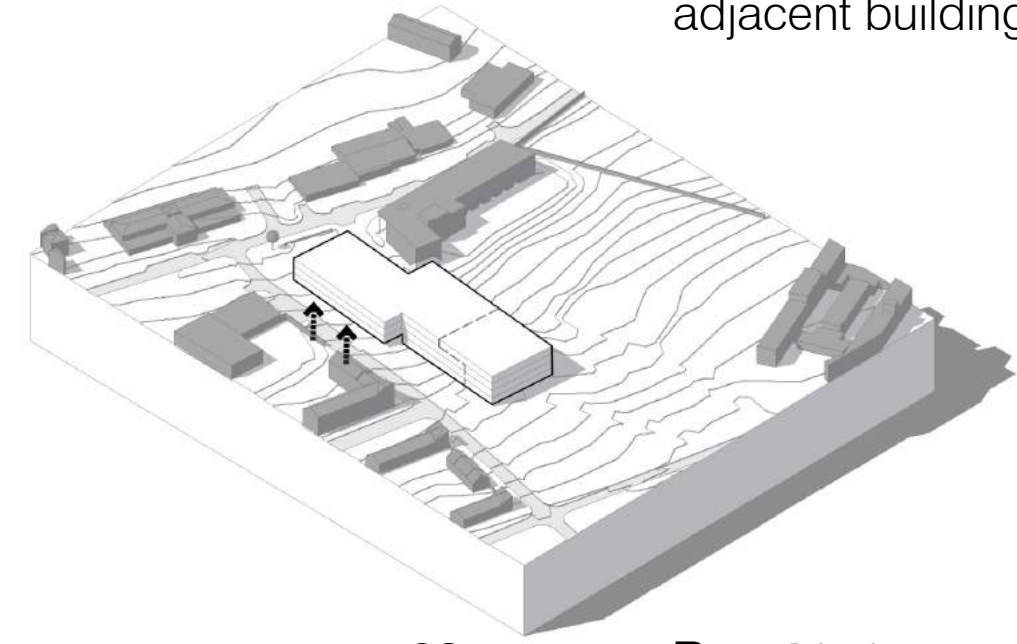
04 **Establish** layers of accommodation



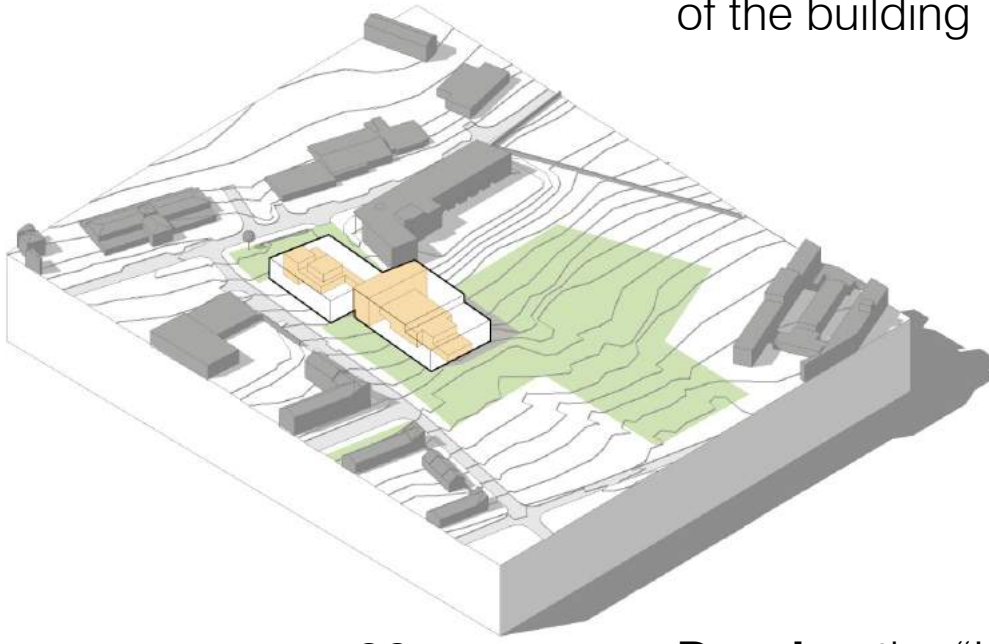
02 **Respond** to daylighting requirements for adjacent buildings



05 **Identify** the key elements of the building



03 **React** to topography



06 **Develop** the "Learning Landscape"



View from Niddrie Mains Road, looking north west



View from Niddrie Mains Road, looking east

Have your say...

Online: www.edinburgh.gov.uk/newcastlebraehighschool
Email: newcastlebrae@edinburgh.gov.uk

Comments can be made until Monday 4th March

• EDINBURGH •
THE CITY OF EDINBURGH COUNCIL

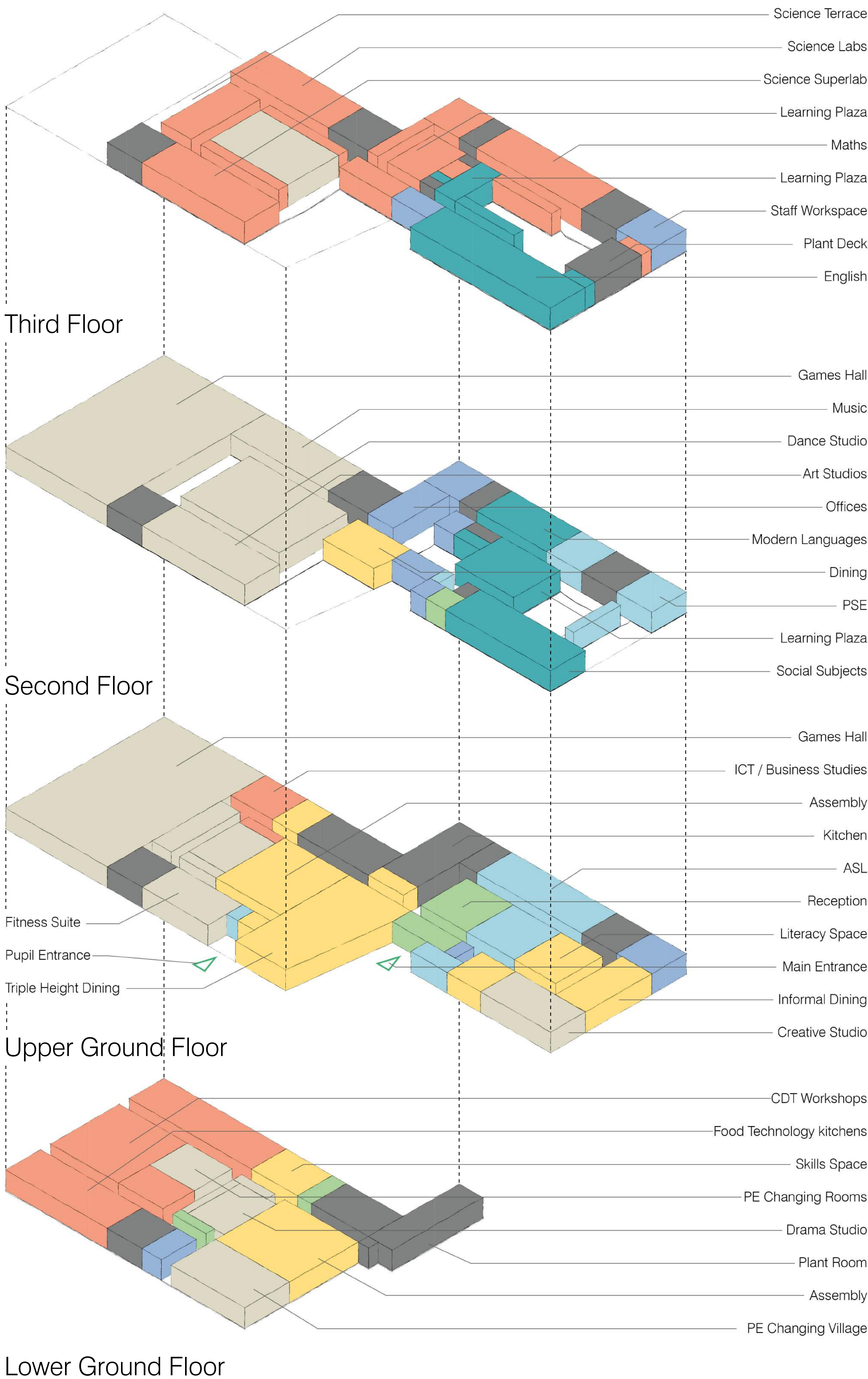
jmarchitects

Morrison
Construction

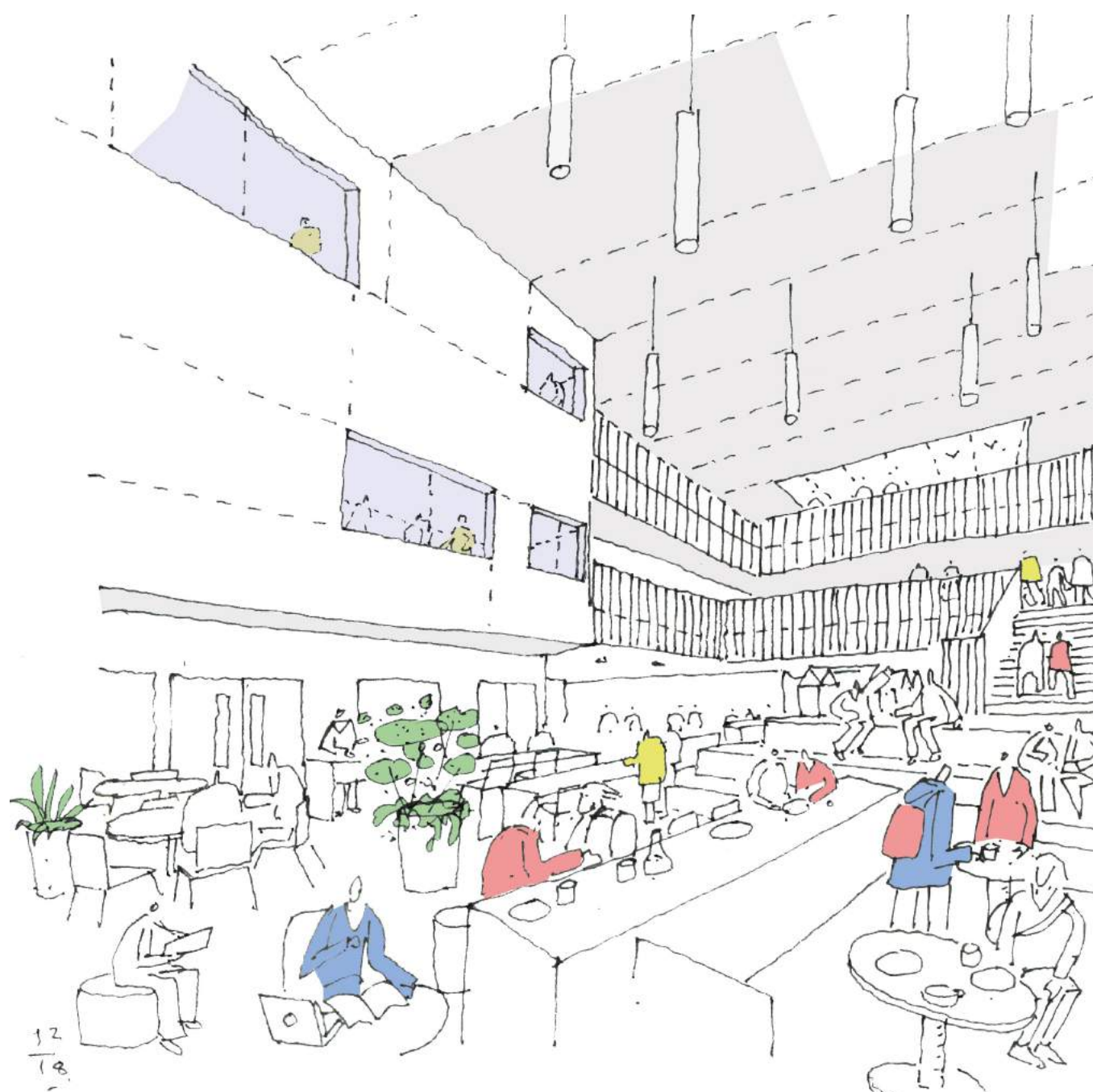
hub
South East Scotland

Replacement Castlebrae High School

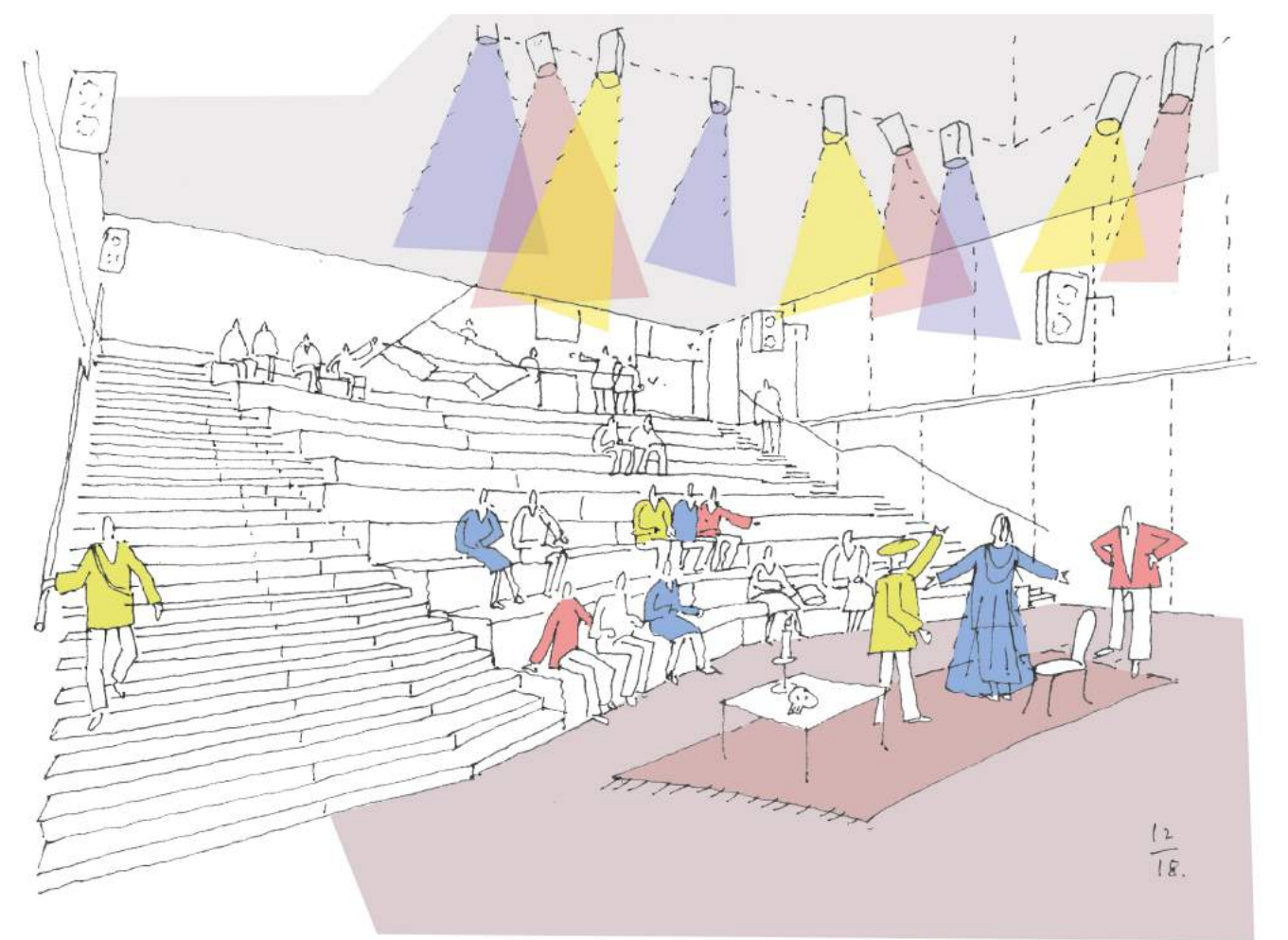
Internal Spaces




Learning Plaza



Dining Space



Assembly

**Have your say...**

Online: www.edinburgh.gov.uk/newcastlebraehighschool

Email: newcastlebrae@edinburgh.gov.uk

Comments can be made until Monday 4th March

