

Figure 13 West Edinburgh Catchment

# Proposal to Establish a New ND Primary School and Implement Catchment Changes to Address School Capacity and Accommodation Pressures in West Edinburgh



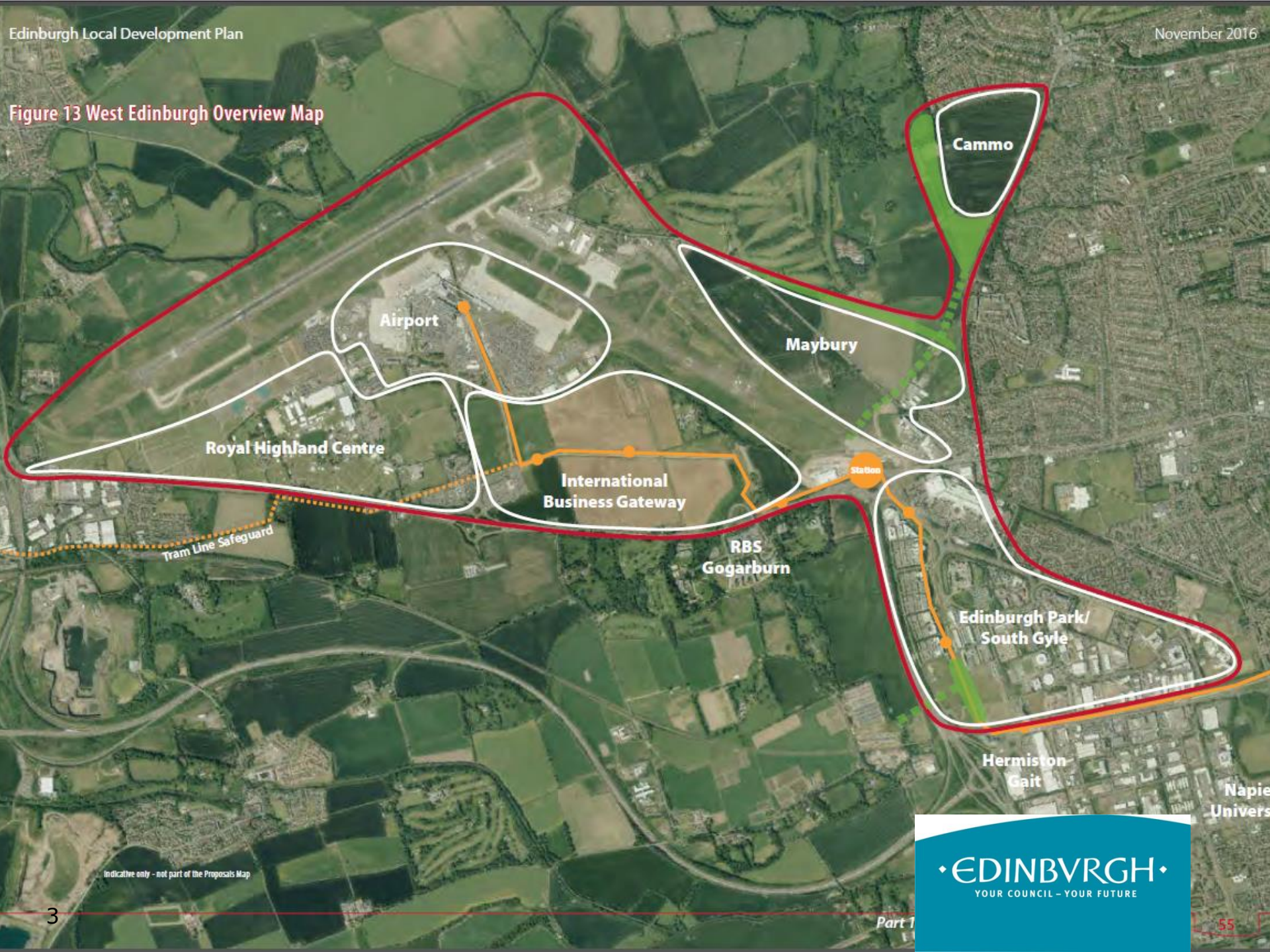
**Wednesday 11 September**  
**Craigmount High School**

# Why are we here?

- New housing development – 600-700 additional non-denominational primary school pupils;
- Existing schools do not have enough space;
- Requirement for a new primary school identified;
- Informal consultation on catchment area in 2018;
- Formal consultation is a statutory requirement – 6 weeks including a public meeting.



Figure 13 West Edinburgh Overview Map



Tram Line Safeguard

Airport

Royal Highland Centre

International Business Gateway

Maybury

Cammo

RBS Gogarburn

Station

Edinburgh Park/  
South Gyle

Hermiston  
Gait

Napier  
Univers

Indicative only - not part of the Proposals Map









'Maybury' – 2 applications:

250 new homes

Planning permission – 'Minded to Grant'

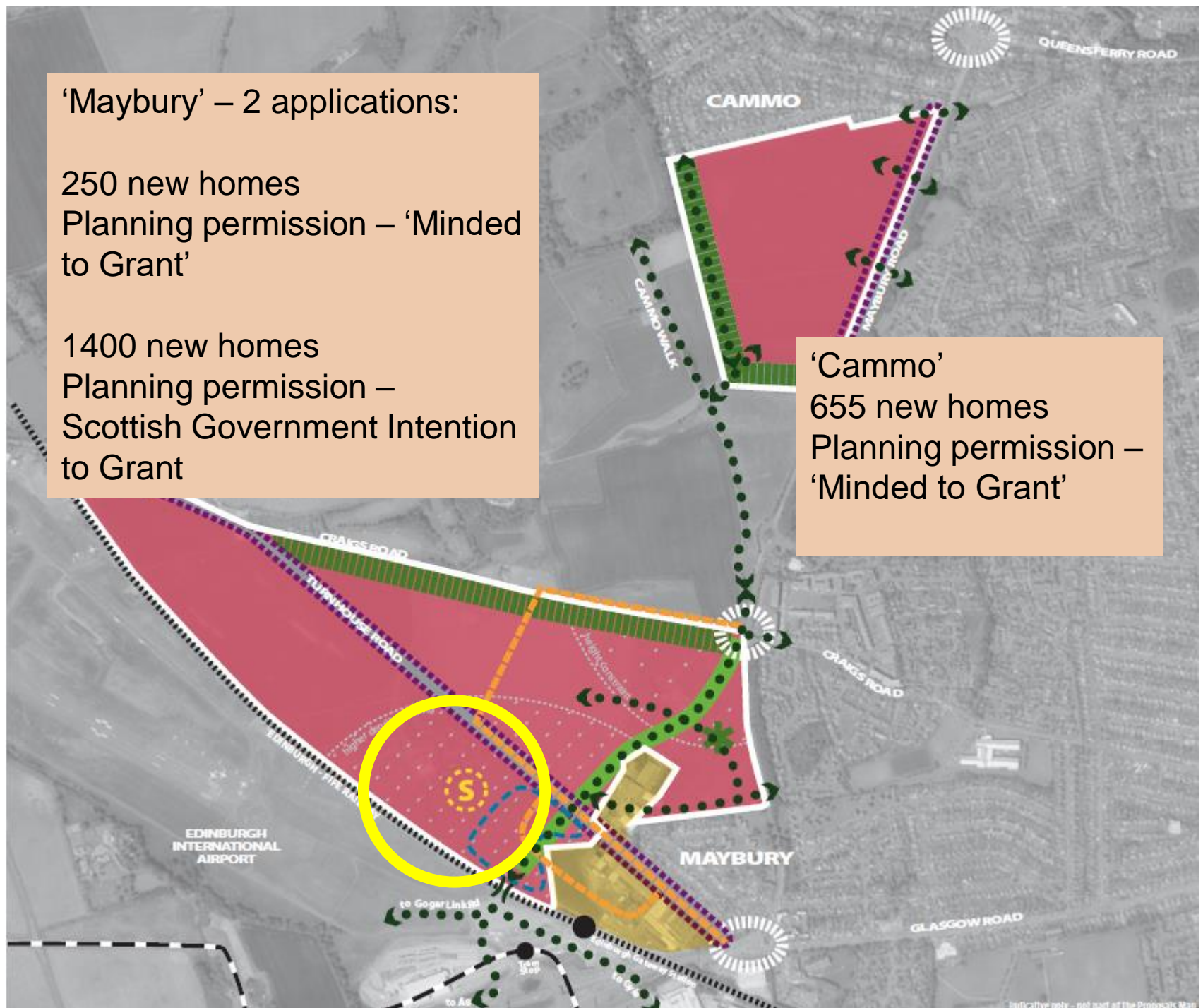
1400 new homes

Planning permission –  
Scottish Government Intention  
to Grant

'Cammo'

655 new homes

Planning permission –  
'Minded to Grant'



- 2 hectare site;
- 21 classes  
(630 capacity);
- Nursery  
(120 capacity);

# Proposed New Primary School



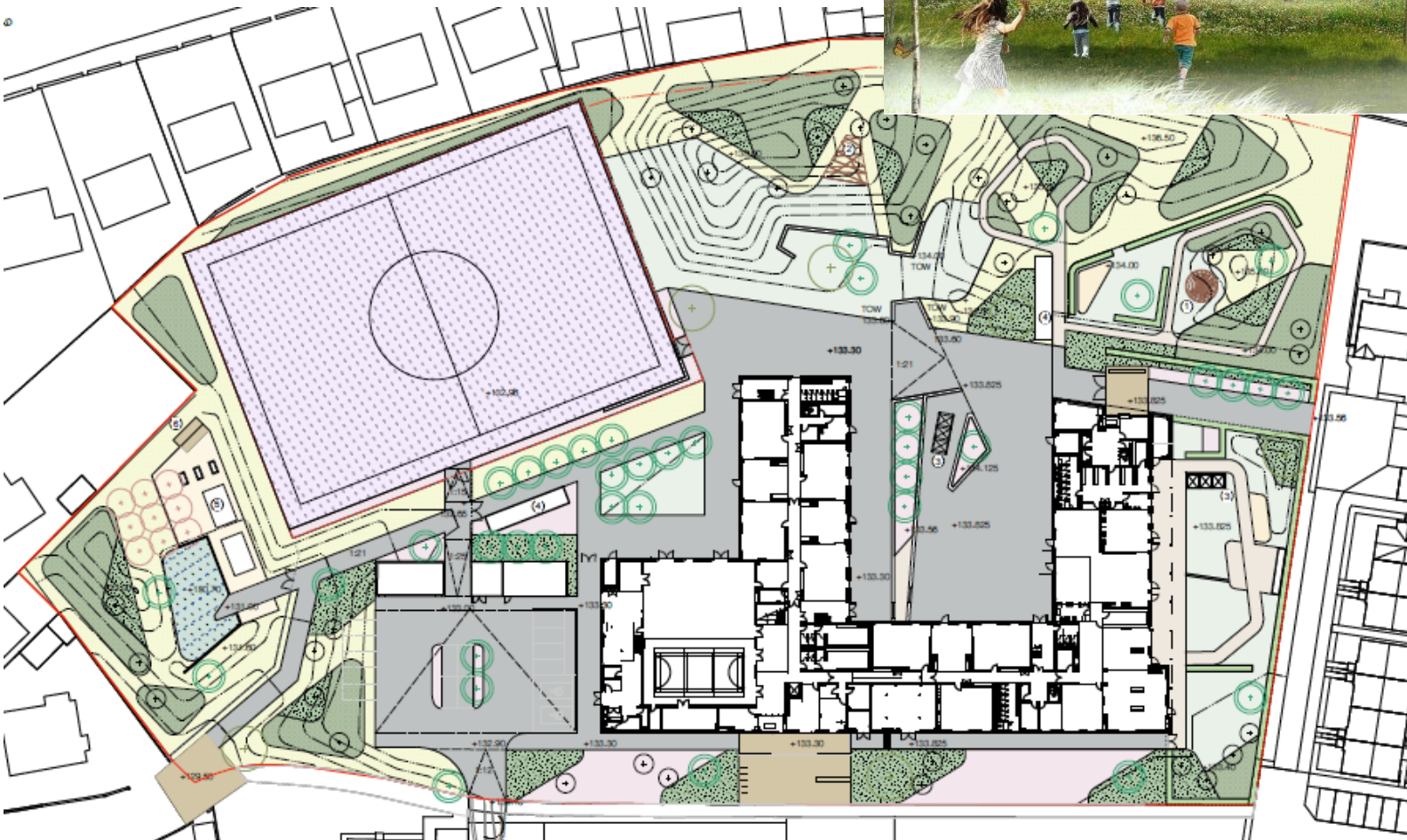


# St John's RC Primary School



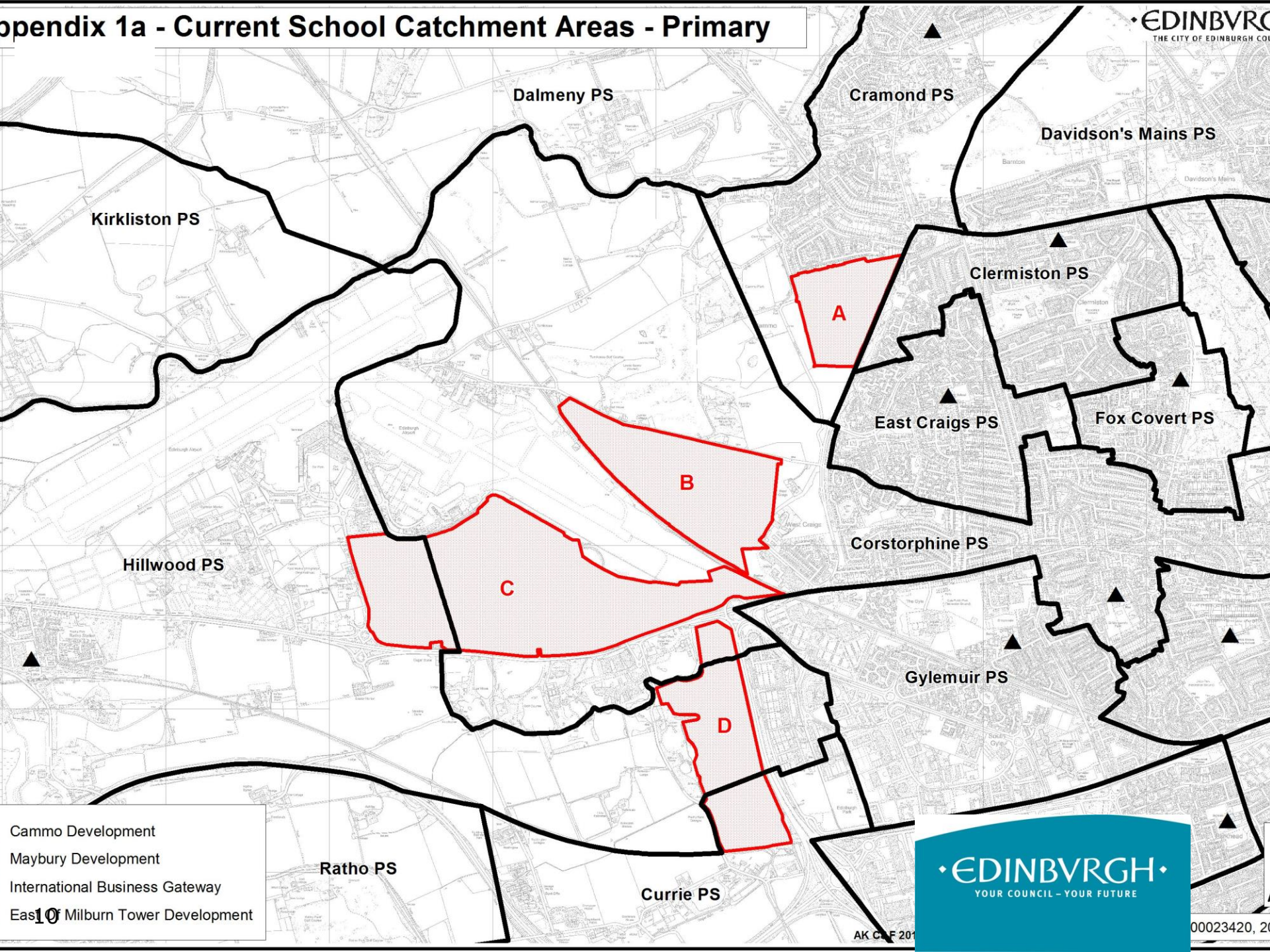


# Broomhills Primary School





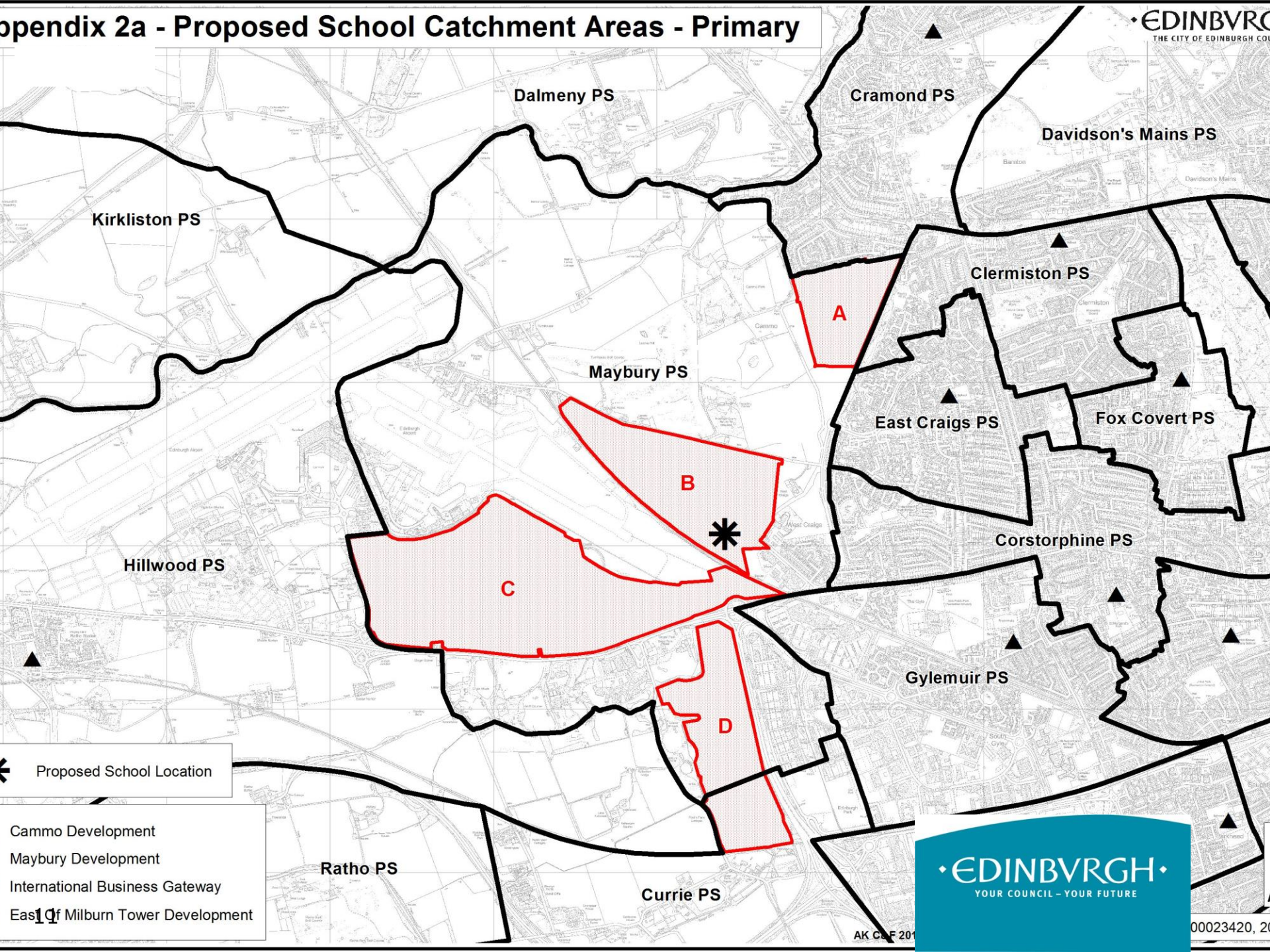
# Appendix 1a - Current School Catchment Areas - Primary



Cammo Development  
Maybury Development  
International Business Gateway  
Eas10 Milburn Tower Development

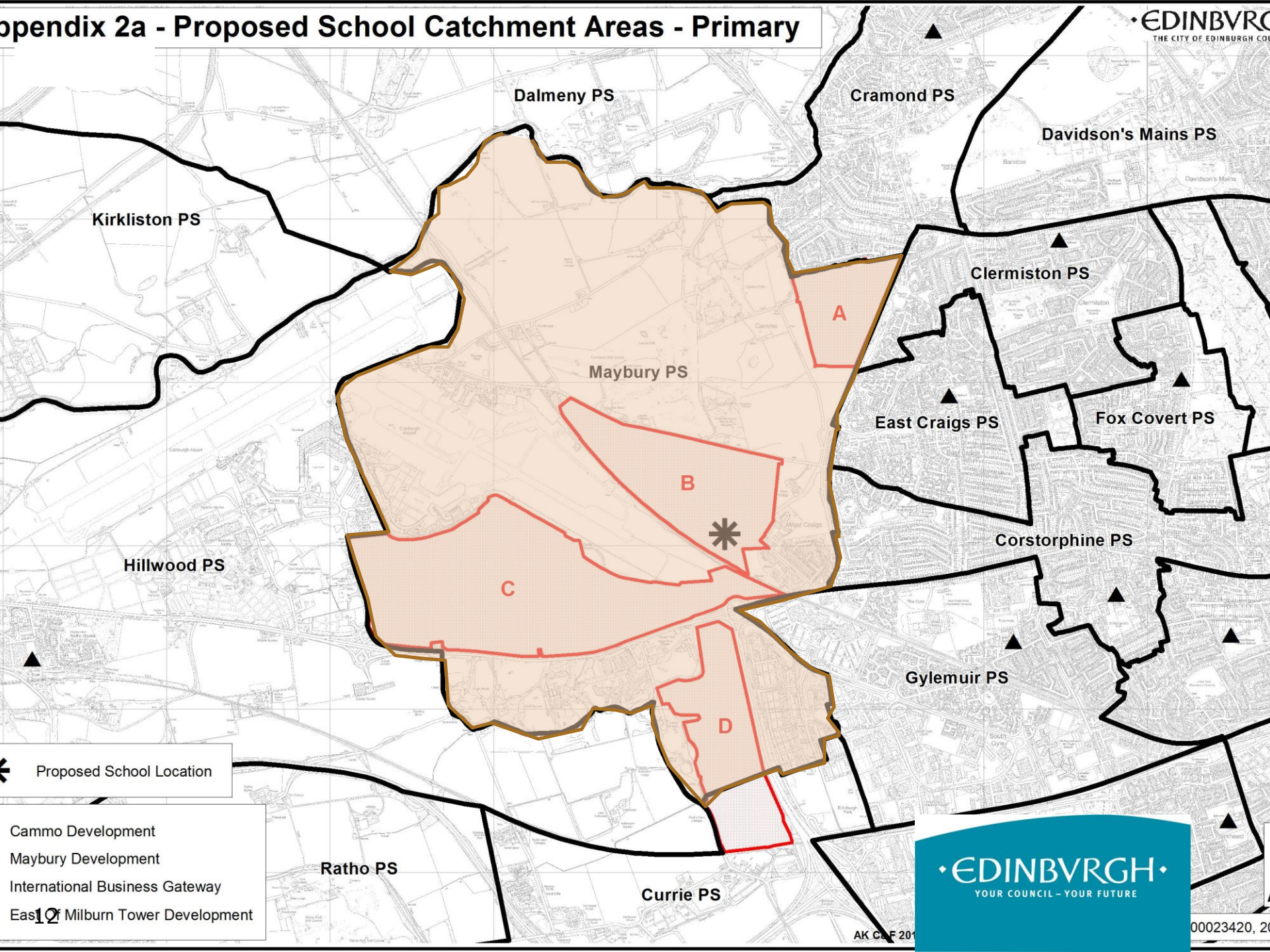


# Appendix 2a - Proposed School Catchment Areas - Primary





# Appendix 2a - Proposed School Catchment Areas - Primary

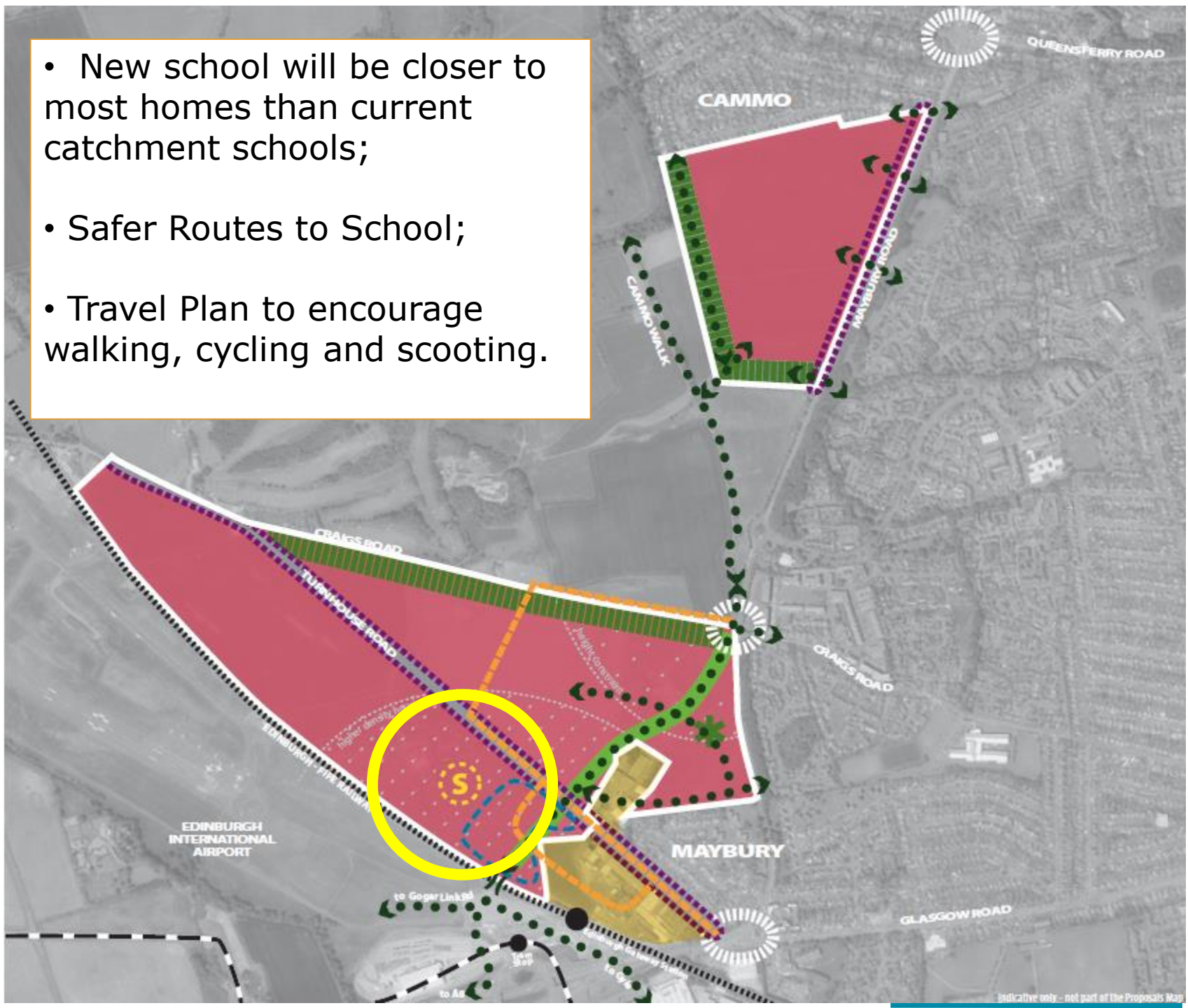


Proposed School Location

Cammo Development  
Maybury Development  
International Business Gateway  
East of Milburn Tower Development

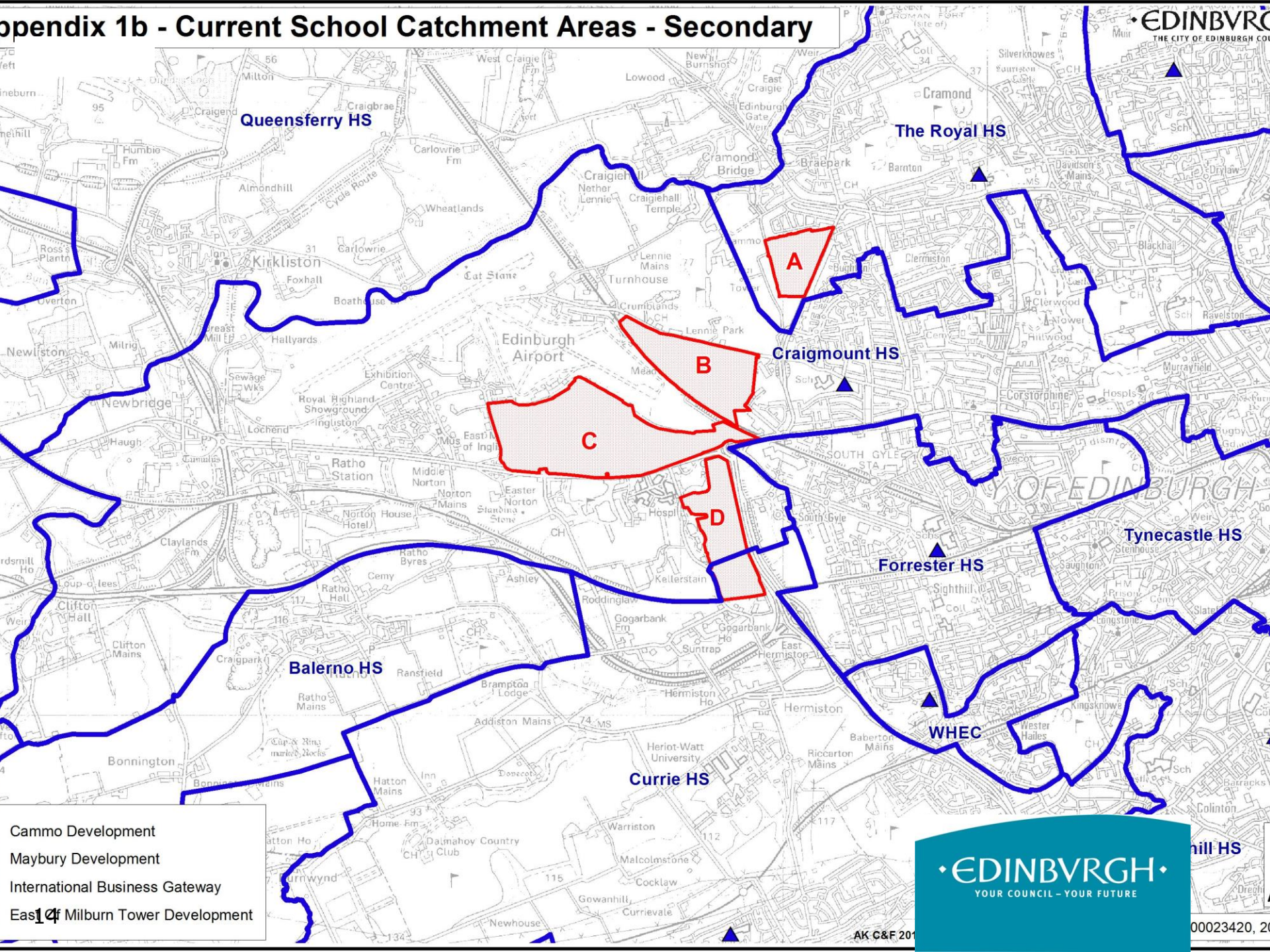


- New school will be closer to most homes than current catchment schools;
- Safer Routes to School;
- Travel Plan to encourage walking, cycling and scooting.





# Appendix 1b - Current School Catchment Areas - Secondary

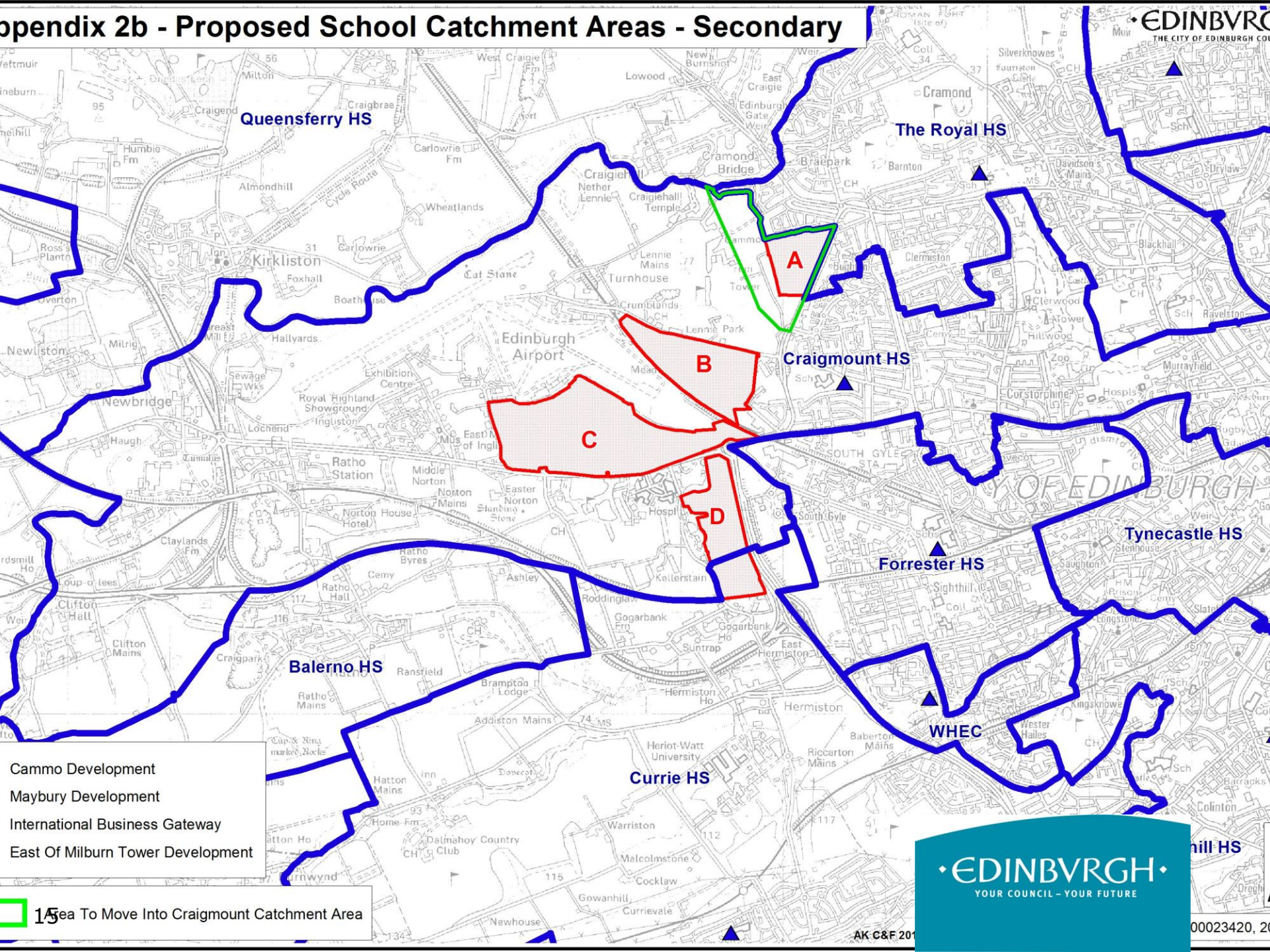


Cammo Development  
 Maybury Development  
 International Business Gateway  
 East of Milburn Tower Development

• EDINBURGH •  
 YOUR COUNCIL - YOUR FUTURE



# Appendix 2b - Proposed School Catchment Areas - Secondary



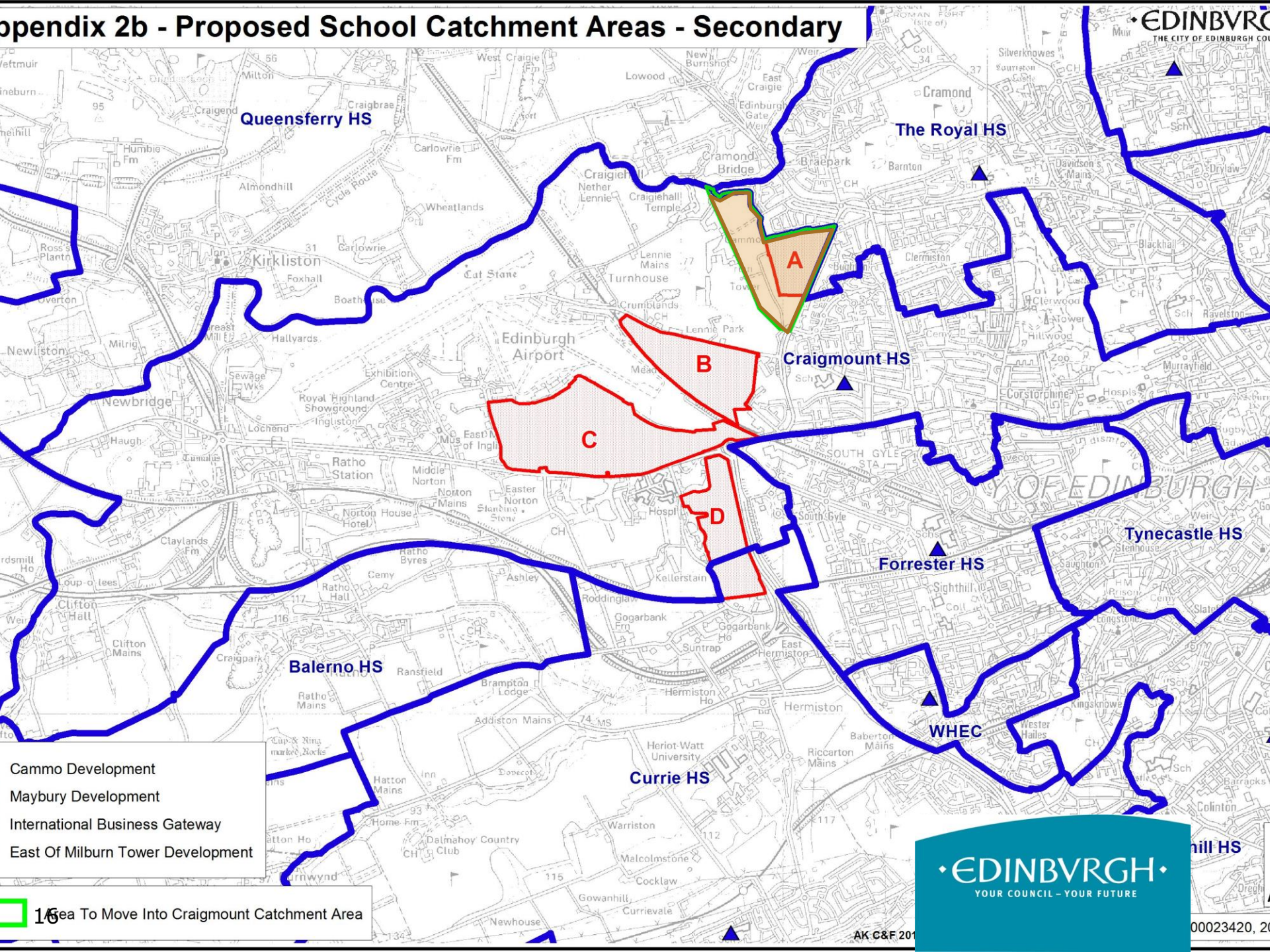
Cammo Development  
 Maybury Development  
 International Business Gateway  
 East Of Milburn Tower Development

15 Sea To Move Into Craigmount Catchment Area

EDINBURGH  
 YOUR COUNCIL - YOUR FUTURE



# Appendix 2b - Proposed School Catchment Areas - Secondary



Cammo Development  
 Maybury Development  
 International Business Gateway  
 East Of Milburn Tower Development

Area To Move Into Craigmount Catchment Area

EDINBURGH  
 YOUR COUNCIL - YOUR FUTURE



# Craigmount High School

- New school will feed to Craigmount HS;
- Capacity 1400 pupils;
- School roll Aug 2018 – 1161 (29% pupils not from catchment area);
- However, future accommodation pressures expected;
- Additional secondary school capacity required in West Edinburgh.



# When will catchment changes take effect?

- November prior to new school opening;
- School could open August 2022 (at earliest)
  - P1 registration November 2021;
- Catchment changes only apply to new P1 and S1 pupils. No mandatory transfer for pupils already attending another school;
- Catchment P2-P7 pupils will have opportunity to apply for a place at the new school.



# Next steps

- Statutory Consultation:
  - Until Monday 7 October 2019
- Education Scotland Report
  - Comments from this meeting will be recorded and sent to Education Scotland.
- Outcome of Consultation Report:
  - Council meeting in March 2020



# Further Information and Questionnaire

[www.edinburgh.gov.uk/newmayburyschool](http://www.edinburgh.gov.uk/newmayburyschool)

[newmayburyschool@edinburgh.gov.uk](mailto:newmayburyschool@edinburgh.gov.uk)

**Thank you for your time**