

Proposal to relocate Victoria Primary School to a new building in the Western Harbour

Affecting Victoria Primary School, Trinity Primary School, Holy Cross RC Primary School, St Thomas of Aquin's RC High School and Trinity Academy

1 Introduction

1.1 This consultation paper sets out the rationale for, and implications of, relocating Victoria Primary School to a new site in the Western Harbour and undertaking a catchment change with Trinity Primary School to address accommodation issues in the Trinity and Victoria areas. This paper also proposes the realignment of the appropriate primary and secondary non-denominational and Roman Catholic school boundaries to incorporate the sections of the Western Harbour area currently not contained within any catchment area. The paper also sets out the consultation process and the means and timescales for making representations.

1.2 The consultation paper is divided into the following sections:

1. Introduction
2. Background and Context
3. Roll Projections, Catchment Data and Capacity Analysis
4. Details of the Proposal - relocating Victoria Primary School to a new site in the Western Harbour
5. Transport
6. Financial Considerations
7. Indicative Construction Timescales
8. Consultation Process

Appendices

1. Response Questionnaire
2. List of Affected Addresses
3. Trinity and Victoria Primary Schools: Existing Catchment Areas, School Locations and Pupil Population Densities
4. Proposed Catchment Changes Affecting Victoria Primary School and Trinity Primary School
5. Proposed Catchment Changes Affecting Holy Cross RC Primary School, and St Thomas of Aquin's RC High School

6. Proposed Catchment Changes Affecting Trinity Academy
 7. Travel Routes from North Leith Area to Trinity Primary and New School Site
 8. Travel Routes from West Victoria Catchment Area to Existing Victoria Primary School Site and New School Site
 9. Inspection, Attainment and Achievement Information for Trinity Primary School and Victoria Primary School
- 1.3 A list of affected addresses is provided in Appendix 2. If the proposal is approved by the Council, the minor catchment change in the northern area of the Western Harbour affecting Holy Cross RC Primary School, St Thomas of Aquin's RC High School, Trinity Academy and Victoria Primary School would be effective from November 2017, in time for the P1 and S1 registration process.
- 1.4 The catchment change in the North Leith area affecting both Trinity Primary School and Victoria Primary School would be effective in the November prior to Victoria Primary School's new building opening, in time for the P1 registration process. It is currently expected that Victoria Primary School's new building would open in August 2020. The catchment changes would only apply to new P1 pupils. However, younger siblings of pupils attending Trinity Primary School who attend the school at the time the catchment change is implemented and who are resident in the part of Trinity Primary School proposed for transfer would be guaranteed a place at Trinity Primary School. Further details of this policy are included in Section 4 of this paper.
- 1.5 Comments on the proposals should be submitted by no later than 5pm on Friday, 17 March 2017. A response questionnaire is provided for this purpose which respondents are encouraged to use, details are included in Appendix 1. The response questionnaire can be completed online via the Council website www.edinburgh.gov.uk/newvictoriaschool. Responses can also be submitted by email or post to the addresses set out in Section 8 of this paper.
- 1.6 Two public meetings will be held as follows, further details of which are provided in Section 8:

Venue	Date	Time
Trinity Primary School	Tuesday, 21 February 2017	18:30 – 20:30
Victoria Primary School	Monday, 27 February 2017	18:30 – 20:30

2 Background and Context

- 2.1 On 13 December 2016 the Education, Children and Families Committee approved that a consultation be undertaken regarding the proposed relocation of Victoria Primary School to a new building in the Western Harbour area. The Committee also approved that the consultation propose the realignment of

Victoria Primary School's catchment area to incorporate a section of Trinity Primary School's catchment and sections of the Western Harbour which are currently not within any school catchment area. Committee also approved that consultation include proposals to realign the catchment areas of Holy Cross Primary School, St Thomas of Aquin's RC High School and Trinity Academy to include all areas of the Western Harbour.

- 2.2 Trinity Primary School and Victoria Primary School were identified as schools facing potential accommodation pressures for August 2017 and August 2018 respectively in the "Primary School Estate Rising Rolls" report to Education, Children and Families Committee on 24 May 2016. The report noted that while both schools faced pressures in the short-term from their existing catchment populations, the continuing development of the Western Harbour site would place a significant future pressure on Victoria Primary School while long-term proposals through the Local Development Plan for new residential development in the North Leith area around Forth Ports and the Scottish Executive building may represent a significant future pressure on Trinity Primary School's accommodation.
- 2.3 The Council's over-riding priority is to ensure that it can meet its commitment to ensure that places are available for all pupils to attend their local catchment school should they wish to do so. The issue of rising primary school rolls in the city has been, and remains, a significant challenge but is one which the Council is committed to addressing and has been doing so successfully for several years through its primary school rising rolls programme.
- 2.4 Through the establishment of stakeholder working groups and a consultative process with parents and school communities this programme has, in the past three years (including delivery of new accommodation for August 2016), delivered extensions to provide additional classrooms at 17 primary schools with additional accommodation also being created at several other primary schools by adapting existing buildings.
- 2.5 Since the closure of Fort Primary School in 2010 Trinity Primary School has experienced growth as double stream year stages have been replaced by up to three stream P1 intakes. This pattern necessitated the construction of four new classrooms at the school through the Council's first Rising Rolls project in August 2013. This first project also identified that a second phase may be necessary in future years and a site at the rear of the school was identified for further expansion should it be required. While P1 intakes at Trinity Primary School have generally been steady the P1 intake experienced in 2016 suggested that the school may struggle to accommodate demand from all catchment P1 pupils in August 2017.
- 2.6 It has since been identified that Trinity Primary School will not require additional accommodation for August 2017, however, short-term projections suggest that the requirement for this additional accommodation remains finely balanced and this will continue to be reviewed on an annual basis. In the long-term, however; the potential accommodation pressures represented by the proposed

- 2.7 Victoria Primary School was also identified through the first Rising Rolls project as a school facing accommodation pressures. A new four classroom building was constructed on the school site in August 2014. However, the degree to which the school could be expanded was limited and it was recognised that the continuing expansion of the Western Harbour area would cause pressure for places at Victoria Primary School to escalate. It is now projected that the school will breach its classroom capacity in August 2018.
- 2.8 Accordingly, the Education, Children and Families Committee on 24 May 2016 approved an approach which would consider the accommodation pressures at both of these schools in a holistic manner. Working groups consisting of school staff, parent representatives and officers from the Council's School Estate Planning Team were established at each school to consider solutions and identify a preferred way forward.
- 2.9 The working groups considered a range of potential solutions which were informed by the feasibility work undertaken to identify the potential additional capacity which may be achieved through the extension of the Victoria Primary School building and through the creation of school accommodation in the former Fort Primary School building. In addition to extension of both existing primary schools and the creation of additional capacity at the former Fort Primary School site, the working groups also considered the potential offered by the site identified for a new school in the Western Harbour. Provision for a proposed new school site was made in the section 75 agreement with Forth Ports in 2002 and was subsequently part of the original masterplan for the Western Harbour development.
- 2.10 The working groups at Trinity Primary School and Victoria Primary School agreed that three potential solutions should be the focus of discussion at workshops arranged at Trinity Primary School on 25 October 2016 and at Victoria Primary School on 26 October 2016. The two workshops were attended by approximately 90 parents/carers in total who represented a cross section of parents/carers (selected by the Parent Councils) at each school. Attendees were invited to discuss the three options presented and identify any possible alternatives.
- 2.11 As a result of the work undertaken by the working groups at each school and following the feedback received through the workshops only one viable option to address the long-term accommodation issues in the Victoria and Trinity areas has been identified: the relocation of Victoria Primary School to a new building in the Western Harbour area, undertaking the necessary catchment change.

Site Considerations

- 2.12 The school site, provision for which was made in the section 75 agreement with Forth Ports in 2002 and which was subsequently part of the original masterplan

for the Western Harbour development, is located adjacent to Windrush Drive in the Western Harbour.

- 2.13 The size of site for any new (or replacement) school is prescribed in the School Premises (General Requirements and Standards) (Scotland) Regulations 1967 and the 1973 and 1979 amendments to those regulations. For a new double stream (or greater) primary school with capacity for a further 40 pupils in the nursery, the total site size should be 1.9 hectares comprising two elements for which the appropriate sizes are defined separately:
- A main school site on which the actual school buildings are located of not less than 1.3 hectares (of which 0.1 hectares relates to the nursery); and
 - An area for playing fields of not less than 0.6 hectares.
- 2.14 The identified school site in the Western Harbour is 1.2 hectares which is equal to the minimum specified requirement for a main new school site without provision of a nursery. In certain circumstances a smaller site area for either element can be provided with the consent of the Scottish Government subject to it being agreed that it would be impractical or unreasonable to apply the standards within the legislation.
- 2.15 The proposed site is considered sufficient to provide an appropriate environment for a new primary school. Victoria Primary School currently offers no nursery provision; however, with the introduction of legislation placing a requirement on authorities to expand early years provision, it is considered necessary for a new school building to offer nursery places. As the provision of nursery facilities on the proposed school site would mean that the minimum standards could not be applied, should the outcome of this statutory consultation process result in the proposal for a new primary school being progressed the consent of the Scottish Government would be required.
- 2.16 Accordingly, the consent of the Scottish Government to make use of the smaller site will be progressed to ensure, should the Council wish to approve the proposal, that the decision of the Scottish Government is known prior to the Council's consideration of the outcomes of this statutory consultation.
- 2.17 The regulations do not actually require that playing fields (or pitches) are adjacent to the actual school building but that they are available to the school i.e. could be elsewhere and off-site. In Edinburgh there are many schools where the maximum areas for playing fields are not met however the city complies with the regulations by virtue of the extensive alternative pitch provision which is available to schools throughout the city. Taking the area of such off-site facilities into consideration this would be the case which would apply regarding the proposed new primary school.
- 2.18 A new primary school would also, according to the existing masterplan of the site, be located adjacent to a significant area of parkland and it is anticipated that a new school would benefit significantly from access to this resource.

3 Roll Projections, Catchment Data and Capacity Analysis

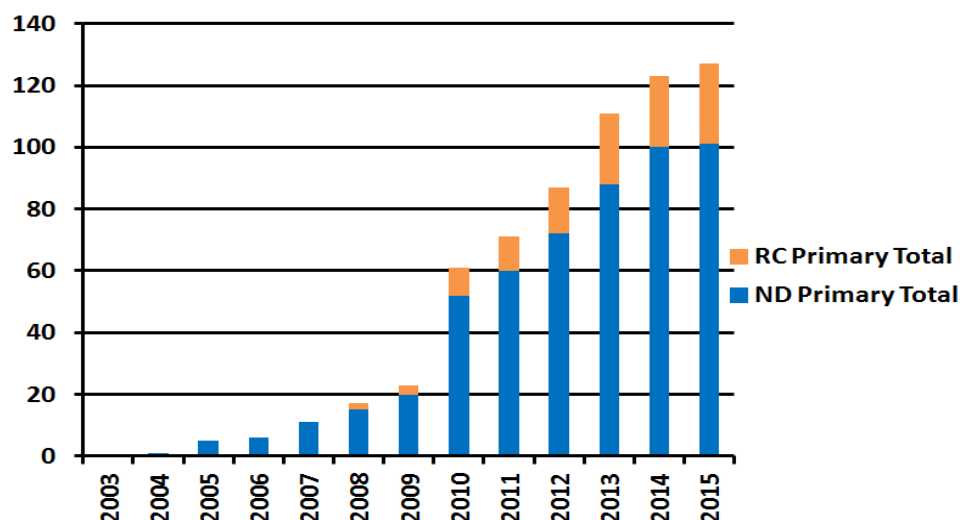
- 3.1 This section considers the historic, current and projected roll and catchment population data and the accommodation issues and other factors that have resulted in this consultation being undertaken and that have shaped the proposal set out in this paper.

Area Overview

Victoria Primary School

- 3.2 Victoria Primary School is located in Newhaven in the north of the city and its catchment area encompasses Lower Granton Road in the west and the Western Harbour in the east. When the school was built in 1844 it was located only metres from the shore of the Forth at the end of the sea wall along Annfield. The development of the Western Harbour on land reclaimed from the waters of the Forth directly north of the school began to generate pupils in 2004 following the completion of the first residential properties in 2003. Since then demand for school places from this area of Victoria Primary School's catchment has increased steadily as new residential properties have been completed.
- 3.3 Areas in the northern and eastern sections of the Western Harbour development currently fall outside any non-denominational primary, RC primary, non-denominational secondary or RC secondary catchment boundaries. However, there are clear geographic reasons why, when placing pupils from this area, Victoria Primary School, Holy Cross RC Primary School, Trinity Academy and St Thomas of Aquin's RC High School are considered the appropriate school provision.
- 3.4 While historically Victoria Primary School's catchment population has been drawn from housing to the immediate south and west of the school the development of Western Harbour means that 55% of the current catchment population (incorporating those areas of Western Harbour currently outside the catchment boundary) now reside north of Lindsay Road in the Western Harbour area. Figure 1 (below) shows how the number of pupils generated from the Western Harbour development has grown since 2004.

Figure 1: Primary Pupil Population in the Western Harbour area, 2002-2016



- 3.5 Accordingly, the Western Harbour development means that in the past decade the community that Victoria Primary School serves has changed considerably both in terms of the number of pupils the school must accommodate and the geographical distribution of its catchment population.

Trinity Primary School

- 3.6 Trinity Primary School is located approximately 450m south of Victoria Primary School adjacent to Trinity Academy at the north end of Victoria Park. Its catchment area stretches from Warriston in the south west to Ocean Drive in the north east and incorporates what was the catchment area of the former Fort Primary School. Trinity's proximity to Victoria Primary School means that there is a natural flow of pupils between the schools.
- 3.7 The closure of Fort Primary School in July 2010 necessitated the expansion of Trinity Primary School to 19 classes in August 2013. At that time it was recognised that a second phase of expansion may be required to allow Trinity Primary to accommodate a full three stream (21 class) intake.
- 3.8 However, there are several residential developments either progressing or proposed in Trinity Primary School's catchment area which represent the potential for significant growth in Trinity's catchment area. These include the site of the former Fort block of flats on North Fort Street/Portland Street, the area to the south of the catchment around West Bowling Green Street and, most notably, around North Leith and Leith Docks. Projections suggest that, even as a full three stream school, Trinity Primary School would not be able to accommodate this level of demand.

Capacity and Growth

- 3.9 Table 1 (below) shows the current capacity and roll data for Trinity Primary School and Victoria Primary School. However, it should be noted that generic capacity figures do not take account of a school's capacity for team teaching arrangements; a practice which is increasingly commonplace across the Council's primary school estate.

Table 1: School Capacity, Class and Roll Data for August 2016

School	Capacity	Roll (as of Sept 2016 census)	Estimated Occupancy Rate
Trinity Primary School	19 Classes (546 pupils)	18 Classes (527 pupils)	96.5%
Victoria Primary School	10 Classes (259 pupils)	10 Classes (254 pupils)	98.1%
Area Total	29 Classes (805 pupils)	28 Classes (781 pupils)	97.0%

- 3.10 While Table 1 suggests that space in both schools is limited it is the stage by stage breakdown of the 2016 school rolls in Table 2, particularly at Victoria Primary School, which begins to suggest developing capacity issues as smaller classes in upper stages are replaced by consistently larger intakes in the early stages:

Table 2: Year Group Rolls at September 2016

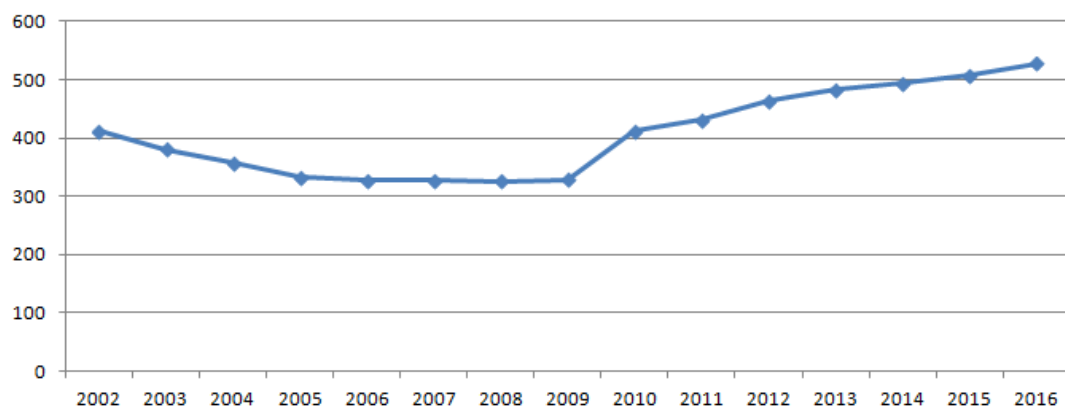
School	P1	P2	P3	P4	P5	P6	P7	Total
Trinity Primary School	84	72	89	76	78	64	64	527
Victoria Primary School	40	38	53	38	44	23	18	254
Area Total	124	110	142	114	122	87	82	781

Trinity Primary School

Capacity and Growth

- 3.11 Figure 2 (below) illustrates that the pupil roll at Trinity Primary School has increased steadily since the closure of Fort Primary School in 2010. The catchment area of Fort Primary School was realigned in full with Trinity Primary School and this has had the effect of replacing two stream year stages at Trinity Primary School with two-and-a-half to three stream stages since 2010.

Figure 2: Trinity Primary School Roll, 2002 to 2016



- 3.12 Classrooms at Trinity Primary School vary in size with the majority exceeding the estate optimum. The classrooms on the ground floor of the main building are particularly large. Fifteen of the classrooms are located within the main building along with two full classroom size general purpose spaces and a number of smaller spaces which cumulatively form an additional GP space. This level of GP provision is consistent with the Scottish Government's recommendations for a school of 19 classes. The remaining four classes are located in a new classroom building constructed during the first phase of the rising rolls process for August 2013. The school has a gym hall which is equivalent in size to a new build hall. The dining hall was recently extended as a final phase of the previous rising rolls project.
- 3.13 While P1 intakes in the past five years have been high at Trinity Primary School, between 2010 and 2015 an average of 14% of the intake has been from non-catchment pupils. Pupils from Victoria Primary School's catchment area form the largest element of this non-catchment cohort. Currently there are 30 pupils at Trinity Primary School who live in Victoria's catchment area. However, there are 34 pupils living in Trinity Primary School's catchment area currently attending Victoria. Accordingly, there is a negligible overall impact in terms of loss and gain between Trinity and Victoria Primary Schools.
- 3.14 In August 2016 there was a shift in the patterns of attendance observed in the P1 intake at Trinity Primary School over the previous five years. The overall number of catchment pupils has increased from previous years and the percentage of catchment pupils choosing to attend the school increased from 83% in 2015 to 94% in 2016. The school roll projections set out in Table 3 (below) which are based on known birth data, housing estimates and National Records of Scotland population projections suggest that this was a spike. However, early P1 registration numbers for August 2017 suggest that this high level may be sustained. Should this be the case, in the absence of a viable alternative approach, then it is likely that the delivery of the additional two classrooms proposed through the Rising Rolls process will be necessary.

Table 3: Trinity Primary School Roll Projections, 2016-2026

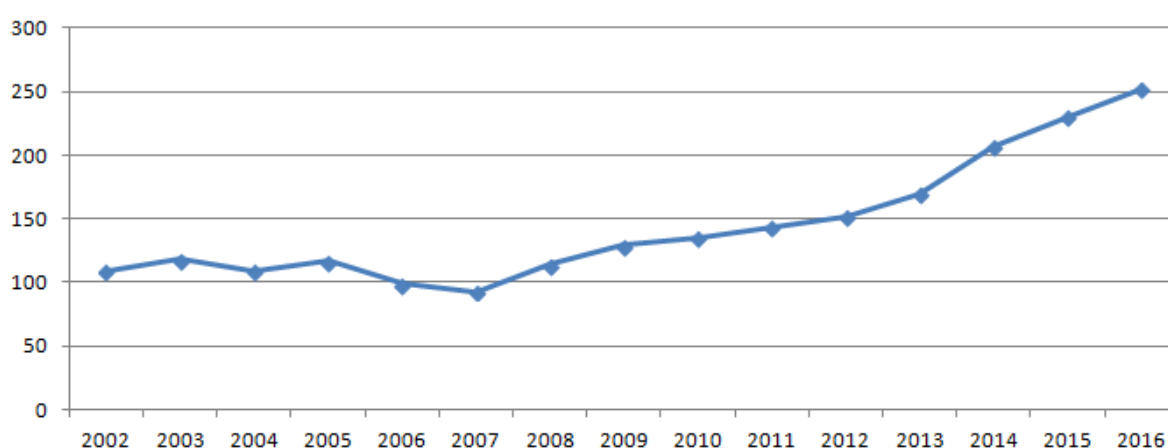
School Capacity	2016	2017	2018	2019	2020	2021	2022	2023	2024	2025	2026
546	527	535	547	537	534	519	519	509	514	531	561

3.15 However, in the longer term the expansion of the school to a full three streams would not be sufficient if the development of more than 2,000 homes around North Leith and Leith Docks comes forward as currently proposed through the Local Development Plan. It is not anticipated that this development will come forward quickly and the projections in Table 3 assume only minor development in this area. Current forecasts assume that more significant pupil generation from this development area will occur beyond 2026 and, if developed as currently proposed, could increase Trinity Primary School's non-denominational catchment population by more than 200 pupils. The impact of this on Trinity Primary School would be the requirement to expand to between a 25 and 28 class capacity with an estimated roll of up to 800 pupils. The proposal in this paper would redirect this demand to a new Victoria Primary School designed to accommodate this additional population and allow the required capacity at Trinity Primary School to be limited to 21 classes.

Victoria Primary School

Capacity and Growth

3.16 Figure 3 (below) illustrates that the pupil roll at Victoria Primary School has increased steadily since 2007.

Figure 3: Victoria Primary School Roll, 2002 to 2016

3.17 Until 2012 when minor work was undertaken to allow Victoria Primary School to expand to a full single stream (7 class) organisation, the school operated with a 6 class capacity. In 2014 this increased to 10 classes following the completion of the Rising Rolls classroom extension. The school has two GP spaces which

is consistent with the Scottish Government's recommendations for a school of 10 classes.

- 3.18 Classrooms at Victoria Primary School vary in size. The seven classrooms and one GP space within the main, Victorian building range from the smallest at 48m² to the largest at 76m². The three classrooms and one GP space within the new building are all 60m². Victoria Primary School's gym hall is one of the smallest across the school estate. The school benefits from dedicated dining space, however, this is made up of two small former classroom areas, making it also one of the smallest dedicated dining areas across the school estate. Supporting spaces such as office space, the staff room and resources storage is very limited. Among City of Edinburgh primary schools exceeding a 7 class capacity, Victoria Primary School has the second smallest internal floor area.
- 3.19 The accommodation issues at the school were highlighted in the schools last inspection report by HM Inspectorate of Education (2007) which rated the quality of accommodation and facilities as "weak" and commented that "staff and pupils made very good use of the building despite a number of limiting factors."
- 3.20 The Victoria Primary School building currently has a 'B' condition rating.
- 3.21 The Local Development Plan suggests that a further 1,850 flats and 11 houses remain to be constructed on the Western Harbour site. This is projected to generate up to 114 additional non-denominational primary school pupils the majority of whom would be resident in the area by 2030. The school roll projections below reflect this growth and suggest that Victoria Primary School will breach its current capacity in August 2017 with additional classroom space required by August 2018. Crucially, the projections suggest that the P1 intakes required by the school will be sustained at double stream in future years.

Table 4: Victoria Primary School Roll Projections, 2016-2026

School Capacity	2016	2017	2018	2019	2020	2021	2022	2023	2024	2025	2026
259	254	287	318	326	335	329	339	347	349	352	356

4 Details of Proposal - relocating Victoria Primary School to a new site in the Western Harbour

Proposal Overview

- 4.1 The proposal is as follows:
- (i) Relocate Victoria Primary School to a new building in the Western Harbour.
 - (ii) Undertake catchment change so that the proposed development area in North Leith which is currently in Trinity Primary School's catchment area is realigned with the new Victoria Primary School.
 - (iii) Realign the catchment boundaries of Victoria Primary School, Holy Cross RC Primary School, Trinity Academy and St Thomas of Aquin's RC High

School so that they include the sections of the Western Harbour area currently not contained within any catchment area.

4.2 Proposal Summary

- A new double stream (14 class) primary school would be established on the identified site (see Appendix 4) in the Western Harbour.
- The new school would be built with an expansion strategy, allowing up to a further 8 classroom spaces to be built at a future stage, if this should ultimately prove necessary.
- All staff and pupils from Victoria Primary School would relocate to the new school building on its completion.
- The new Victoria Primary School would include a 40/40 nursery.
- All areas of Trinity Primary School's catchment north of Lindsay Road and Commercial Street would become the catchment area of the new Victoria Primary School.
- The date from when the catchment change above would be effective is the school year at the start of which the new primary school could be completed and opened and is entirely dependent on when that happens; the pupil registration process would be progressed on that basis. The new Victoria Primary School would become the non-denominational catchment school for all P1 pupils living in the revised catchment area at the time of P1 registrations in the preceding November.
- The catchment changes affecting Trinity Primary School would only apply to new P1 pupils. However, younger siblings of pupils attending Trinity Primary School who attend the school at the time the catchment change is implemented and who are resident in the part of Trinity Primary School proposed for transfer would be guaranteed a place at Trinity Primary School. This policy would only apply if, when the younger sibling was registering at P1, he/she continued to be resident in the part of the Trinity Primary School catchment which would transfer to Victoria Primary School and would still have an elder sibling at Trinity Primary School in the coming academic year.
- The catchment areas of Victoria Primary School, Holy Cross RC Primary School, Trinity Academy and St Thomas of Aquin's RC High School would be adjusted to include the sections of the Western Harbour area currently not contained within any catchment area. These catchment changes are not predicated on the provision of a new Victoria Primary School and would be effective immediately following Council approval.
- The existing Victoria Primary School site would be subject to the Council's standard disposal process. However, the Council will consider alternative uses of the Victoria Primary School building and make recommendations as part of the Outcomes of the Consultation Report to the Council meeting in June 2017.

- The requirement for additional classroom space at Trinity Primary School would continue to be assessed through the Rising Rolls process.

Implications

- 4.3 This section considers the implications and practicalities of implementing the proposal to relocate Victoria Primary School to a new building in the Western Harbour.

Relocating Victoria Primary School

- 4.4 The site for a new primary school was agreed as part of the section 75 agreement with Forth Ports in 2003 and is shown in Appendix 4. The new school would be double stream (14 classes) with capacity for 420 primary pupils. However, it would be built in such a way that, if it were to be required, up to an additional eight classrooms could be constructed on the school site. The requirement for this additional classroom space would be monitored as part of the annual Rising Rolls Process.
- 4.5 Early discussions with Fort Ports suggest that the school site could be made available almost immediately and, subject to the availability of the capital and revenue funding required to progress the project it would be the intention to have the new primary school constructed and operational as soon as possible. It is estimated that the earliest date when a new primary school could be opened is August 2020 with the new school and nursery built over a single phase starting on site in August 2018.
- 4.6 If the proposal were to be approved and the project progressed, a working group involving Council officers, an appointed design team, the school management and representatives from the Parent Council would be established and meet at regular intervals to ensure the school community is fully informed and engaged throughout the process to design and deliver the new school. This process would also include consideration of traffic and transport implications for the area, the travel routes from more distant areas of the catchment and the impact of the design on neighbouring properties. Community groups would be involved in identifying how the new school could most effectively serve both the developing Western Harbour and established Newhaven communities.
- 4.7 Pupil and staff engagement will be a significant element in this engagement process, both in terms of their role in the design of the new building and in identifying any additional support that will be required to facilitate the move to the new school building.

Temporary Arrangements from August 2018

- 4.8 The projections in section 3.21 suggest that Victoria Primary School will breach its classroom capacity in August 2018. Accordingly, it will be necessary to identify a temporary solution to the accommodation shortfall from August 2018 until such time as the new school is delivered. The working group established at Victoria Primary School to consider the longer term solutions will continue to

meet to develop a temporary solution. Options which the group are likely to consider will include:

- more extensive use of team teaching;
- the loss of GP space during this period;
- provision of temporary accommodation on the school site;
- establishing temporary annexe accommodation.

Proposed Catchment Changes – Victoria Primary School and Trinity Primary School

- 4.9 The location of the school building, existing pupil flows, obvious geographical boundaries, public transport links and distances to and from a school are all factors taken into account when establishing new catchment boundaries. However, the principal driver is to ensure that the catchment populations for each of the schools affected are appropriate to their proposed capacity.
- 4.10 Projections currently suggest that Trinity Primary School will be able to meet future demand from its catchment population. Should demand exceed that projected as the August 2016 P1 intake suggests it could, the provision of the planned Rising Rolls building would address this. However, the development of North Leith area, as currently proposed in the Local Development Plan would cause Trinity Primary School's classroom capacity to be significantly exceeded. Accordingly, the catchment changes set out under this proposal would result in the significant development area in North Leith being realigned with a new Victoria Primary School built with a planned expansion strategy to cope with this additional pressure.
- 4.11 The area of Trinity Primary School's catchment which would be realigned with Victoria Primary School is shown in Appendix 4. In summary it encompasses all areas of Trinity Primary School's catchment north of Lindsay Road and Commercial Street. Details of the pupils population in this area at the time of the Primary School September census in 2016 are set out in Table 5 (below):

Table 5: Analysis of Primary Pupil Population in North Leith Area Proposed for realignment with Victoria Primary School

Total Primary Pupil Population (at Sept. 2016)	Total Attending a Non-denominational Primary School	Attending Trinity Primary School	Attending Victoria Primary School	Attending another Non-denominational Primary School
29	23	16	1	6

- 4.12 Table 5 illustrates that the number of pupils currently residing in the area of North Leith which would transfer to Victoria Primary School is small. Two thirds of the pupils in the area are in P1-P3, suggesting already that this is an area with potential for growth. Only one of the pupils in the area currently attends Victoria Primary School compared to 5 who attend Leith Primary School which

is geographically closer than Trinity Primary School, Victoria Primary School and the school site in the Western Harbour. However, the difference in distance is less than 1km in all cases and the growth projected for the area through the LDP (more than 200 pupils) may not be accommodated at Leith Primary School which, it is anticipated, will come under pressure from development in its own catchment area.

- 4.13 Appendix 7 shows the travel distances and routes between the North Leith area of Trinity Primary School's catchment, Trinity Primary School and the site of the proposed new Victoria Primary School. It shows that the proposed catchment changes would not result in a significant difference in the distances pupils from this area are likely to experience travelling to their catchment school. However, the frequent bus services along Commercial Street and Lindsay Road, including the number 10 bus which stops directly adjacent to the proposed school site in the Western Harbour mean that public transport routes from the North Leith area to the new school will be more convenient than those between North Leith and Trinity Primary School.
- 4.14 The date from when the catchment change would be effective is the school year at the start of which the new Victoria Primary School could be completed and opened and is entirely dependent on when that happens; the pupil registration process would be progressed on that basis. The new Victoria Primary School would become the non-denominational catchment school for all P1 pupils living in Victoria's catchment area at the time of P1 registrations in the preceding November. Pupils living within the new catchment area of Victoria Primary School when registrations opened in November would be expected to make a non-catchment placing request if they wished to attend a school other than Victoria Primary School.
- 4.15 However, younger siblings of pupils who attend Trinity Primary School at the time the catchment change is implemented and who are resident in the part of Trinity Primary School proposed for transfer would be guaranteed a place at Trinity Primary School. This policy would only apply if, when the younger sibling was registering at P1, he/she continued to be resident in the part of the Trinity Primary School catchment which would transfer to Victoria Primary School and would still have an elder sibling at Trinity Primary School in the coming academic year. This policy would also only apply to younger siblings who were born before the date from when the catchment change is implemented.
- 4.16 The catchment change proposed is shown in Appendix 4. More detailed maps and lists of the addresses affected may also be viewed on the Council website: www.edinburgh.gov.uk/newvictoriaschool.

Proposed Catchment Changes – Formalising the Western Harbour's Catchment Areas

- 4.17 The Council's school estate catchment boundaries do not currently incorporate some areas which may historically have contained no residential properties. The northern and eastern sections of the Western Harbour are one such area.

Where an area falls outside catchment boundaries the pupil population is assigned a nearest appropriate school. In order to remove any ambiguity it is proposed that the opportunity be taken through this consultation process to formalise the non-denominational, Roman Catholic, primary and secondary catchment boundaries around the northern and eastern sections of the Western Harbour.

4.18 The nearest appropriate schools are as follows:

- Non-denominational Primary: Victoria Primary School;
- Roman Catholic Primary: Holy Cross RC Primary School;
- Non-denominational Secondary: Trinity Academy;
- Roman Catholic Secondary: St Thomas of Aquin's RC High School

4.19 It is proposed that the catchment boundaries of the schools above now be extended to include the northern and eastern sections of the Western Harbour. This proposal will not change roll projections or place pressure on these schools which they are not already experiencing or are forecast to experience as, in administrative terms, the pupils from this area are already considered to have the same status as catchment pupils. This proposal simply removes any ambiguity by formalising the catchment arrangements already effectively in place.

4.20 The above catchment changes are not predicated on the progression of any other part of the proposal in this paper and are already effectively applied. Accordingly, it is proposed that the changes would be applied ahead of the P1 registration process in November 2017.

4.21 The catchment changes proposed are shown in Appendices 5 and 6. More detailed maps and lists of the addresses affected may also be viewed on the Council website: www.edinburgh.gov.uk/newvictoriaschool.

Early Years Provision

4.22 The Scottish Government is committed to increasing the early learning and childcare entitlement to 1140 hours per year by 2020 and the Council is now reviewing its Early Years Estate to identify what measures may be required to meet current and projected demand. It is expected that some of this demand can be met by increasing hours of the existing facilities however it is likely that additional provision, such as the nursery proposed as part of the proposed new school, will be required.

4.23 Neither Trinity Primary School nor Victoria Primary School has a nursery. Early Years provision in the area is made through the Fort Early Years Centre.

4.24 The inclusion of a new nursery facility with a relocated Victoria Primary School would address demand for additional nursery capacity in the area and provide an opportunity for integrated learning across all Curriculum for Excellence levels. However, it would increase the cost of the new school and make Scottish Government approval of the school site necessary (see 2.16).

Educational Benefits of Proposal

- 4.25 Under the proposal Victoria Primary School would relocate to a new school building in the Western Harbour. All of Victoria Primary School's existing primary classes and new nursery classes would be colocated on a single site within a purpose built facility. The new building would address the concerns raised by HMIE inspectors in 2007 who rated the quality of accommodation and facilities as "weak" and commented that "staff and pupils made very good use of the building despite a number of limiting factors."
- 4.26 Victoria Primary School is highly regarded for the quality of the service it provides for children and families and the Council believes that a new school building appropriate for a modern curriculum would enhance the learning and teaching environment for all pupils.
- 4.27 The Council considers that the principal educational advantage of the proposal is that it addresses the sufficiency and suitability issues at Victoria Primary School and provides a long-term strategy that will mitigate the risk of significant sufficiency issues in future years at Trinity Primary School.
- 4.28 The new school building would mean that pupils attending Victoria Primary School would have access to indoor and outdoor learning and play facilities which are flexible so that children could work together in large or smaller groups with access to state of the art ICT. Purpose-built physical education facilities would assist in the delivery of a better quality of two hours of PE as required by Scottish Government's Healthy Living Strategy.
- 4.29 The availability of a new, purpose built facility including a gym hall could also advantage the local community. The availability of parkland adjacent to the site of a new Victoria Primary School, as proposed in the current masterplan for the Western Harbour, would present an opportunity for the school to deliver an enhanced sports curriculum and benefit from access to extended green space.
- 4.30 The provision of purpose built dining facilities would improve the dining experience and allow for greater flexibility in the timetabling of General Purpose spaces.
- 4.31 The principal educational disadvantage of the proposal is that it proposes wholesale changes to a school which is already performing well and is highly regarded within its community.
- 4.32 The educational advantage of realigning the catchment boundaries of Holy Cross RC Primary School, Trinity Academy and St Thomas of Aquin's RC High School is that it will provide parents and siblings with certainty about their catchment status and confirm their treatment through the placement process as catchment pupils.

Evaluation of Quality Indicators

- 4.33 The proposal includes the realignment of the North Leith area of Trinity Primary School's catchment area to Victoria Primary School's catchment area. Victoria Primary School was last inspected by HM Inspectors of Education (HMIE) in

October 2007. Under the criterion being evaluated at that time the school received seven very good, six good and one weak but given the time since the previous inspection, it now has limited value. However, it remains relevant to the proposals contained within this statutory consultation that the weak evaluation related to the quality of the accommodation and facilities at the school.

- 4.34 An internal follow through report undertaken by a Quality Improvement Officer from the Children and Families Department in August 2009 concluded that *“With support from the education authority, Victoria Primary School provided a very good standard of education for its pupils. The school had progressed well since the inspection and had made the necessary improvements in light of the inspection findings. The current improvement plan had had a positive impact on the work of the school. The teamwork in the school had provided a very good basis for continued improvement.”* The educational authority concluded that it would publish no further reports in connection with the 2007 HMIE report.
- 4.35 Table 6 shows the evaluation of quality indicators by Education Scotland for Trinity Primary School (August 2011). As Victoria Primary School has not recently been inspected no equivalent data is available.

Table 6: Education Scotland Evaluation of Quality Indicators at Trinity Primary School and Victoria Primary School

Evaluation Criteria	Trinity Primary School	Victoria Primary School
Date of Evaluation Report	August 2011	n/a
Primary School		
Learners' experiences	Excellent	n/a
Improvements in performance	Very Good	n/a
Meeting Learning needs	Very Good	n/a
Nursery Class		
Children's experiences	n/a	n/a
Improvements in performance	n/a	n/a
Meeting Learning needs	n/a	n/a
Work of the school and nursery class		
The curriculum	Very Good	n/a
Improvement through self-evaluation	Very Good	n/a

Educational Attainment

- 4.36 Appendix 9 comprises attainment data for Trinity and Victoria Primary Schools.

Monitoring

- 4.37 The Quality Improvement Officer for the Trinity and Victoria Primary Schools will continue to monitor and evaluate attainment and achievement and the overall impact of any catchment changes implemented ensuring any necessary actions are included in school Improvement Plans on an ongoing basis.

Community Issues

- 4.38 Victoria Primary School is a focal point within the community it serves. However, there has been a significant demographic shift in the area and the provision of a new school in the Western Harbour provides an opportunity to consider how a new school building may best serve both the established and developing areas of the school community. This will be considered as part of the scoping and design process with the views of the community sought through an informal consultation process.
- 4.39 It is also recognised that there is demand within the local community for alternative uses of the Victoria Primary School building to be considered, should it no longer be required to serve as a primary school. The Council will consider the impact alternative uses of this building may have on the affordability of a new school and other Council budgets and make recommendations as part of the Outcomes of the Consultation Report to the Council meeting in June 2017.

5 Transport

- 5.1 The proposed new school site is located directly adjacent to Windrush Drive, directly opposite the David Lloyd Leisure Centre. The current masterplan for the area does not indicate from where it is anticipated the site would be accessed. This will be designed and developed to suit the layout of the school and with consideration to existing and future road layouts.
- 5.2 A review of the transport infrastructure in place and the infrastructure that will be required to service the new school site will be considered as a part of the design process.
- 5.3 The new school design would provide for staff and visitor parking on the school site. However, it is not Council policy to specifically provide drop-off zones for parents and carers.
- 5.4 The proposed catchment area of the new school would incorporate the North Leith sections of Trinity Primary School's catchment area. Appendix 7 illustrates little difference in the travel distances and routes between the North Leith area of Trinity Primary School's catchment, Trinity Primary School and the site of the proposed new Victoria Primary School.
- 5.5 Frequent bus services along Commercial Street and Lindsay Road, including the number 10 bus which stops directly adjacent to the proposed school site in the Western Harbour mean that public transport routes from the North Leith

area to the new school will be more convenient than those between North Leith and Trinity Primary School.

- 5.6 The Victoria Primary School catchment area is relatively small and, as more than 55% of the catchment population will be living within the Western Harbour area, the proposal will reduce the distance the majority of pupils are required to travel to their catchment school. For those pupils residing in other areas of Victoria's catchment there will be an increase in the distance they are required to travel to school. This is illustrated by the example of the relative travel distances from Lower Granton Road shown in Appendix 8. The size of the existing school catchment area means that the distances travelled are all within acceptable travel limits. If this proposal is progressed, the Road Safety team will be engaged to ensure that Victoria Primary School's Green Travel Plan and the Safer Routes analysis is updated to reflect the change.
- 5.7 In summary, the proposal will ensure that the majority of pupils from existing areas and in the developments proposed will be able to access their school via public transportation with the majority of the catchment population within walking distance of it. This is likely to make it easier to encourage pupils and parents or carers to walk, cycle or scoot to school.

6 Financial Considerations

Capital Costs

- 6.1 A construction cost estimate, based on the Scottish Future Trust metric for new primary schools, shows an indicative capital cost of £12.0m for a 14 class school and 40/40 nursery. This does not include the cost of site acquisition and servicing and remediation of that site, but does account for the future cost of inflation to Q4 of 2017. Table 7 (below) shows how these costs would apply to a school in the Western Harbour area where the site acquisition is already assumed as part of the developer's contribution.

Building Condition

- 6.2 A survey carried out in October 2012 rated the Victoria Primary School building as having an overall condition 'B' – performing adequately but showing minor deterioration. The report recommended a 5 year expenditure of £511,000 to maintain the school at a satisfactory standard. No budget is presently available to allow this work to progress.

Table 7: Capital Cost Summary

	£'000
Capital Construction (based on Q4 2017 prices)	£12,000
Site Acquisition	£0
Site Servicing and Remediation	£3,070
Temporary Provision at Victoria	tbc
Disposal proceeds (existing Victoria PS)*	(£800)
Estimated Total Capital Costs	£14,270

* assumes redevelopment for residential use and favourable ground conditions.

- 6.3 Although the Council is able to collect financial contributions towards delivering the new school from developers through Section 75 agreements, this is unlikely to lead to full cost recovery. There is a risk both on the timing and achievement of developer contributions which could create a short-term or overall funding pressure. However, it is assumed that the cost of the site acquisition would be nil due to provision made in the existing section 75 agreement with Forth Ports for the site identified for a new school.

Revenue Costs

- 6.4 The additional revenue costs associated with a new school would be met through current demography funding. While it would be a new building, it would replace an existing establishment; therefore, there is no gain in terms of the number of primary schools across the school estate. Accordingly, there are no additional revenue costs associated with additional management, teaching and non-teaching staff positions which would be required regardless of the new building.
- 6.5 The maintenance burden for the new building is likely to be low in the short to medium term but would increase over time. These costs would be partially offset against the savings made through the disposal of the existing Victoria Primary School building. However, the costs of running a significantly larger school with a nursery are greater than Victoria Primary School's current running costs.
- 6.6 In 2015/16 the cost of maintenance, utilities, rates and services at the existing 10 class Victoria Primary School building was £95,400. This compares with an estimated annual running cost of £312,000 for a new 14 class school with 40/40 nursery. A significant factor in this difference is the cost of rates which are presently £22,700 for the existing Victoria Primary School building but are estimated to be £98,000 for a new school building. The other significant factor is that the estimated running costs for a new school assume a full planned maintenance regime. The current 2015/16 running costs for the existing Victoria Primary School building does not allow for a planned maintenance regime. Should the same regime be applied to the existing Victoria Primary School building the recommended running costs would be £146,000. This does

not include the capital investment of £511,000 recommended to bring the school building up to a satisfactory standard. The difference between the recommended £146,000 for the existing Victoria Primary School building and the £312,000 for the new school is primarily down to additional floor space.

Funding

- 6.7 Should the outcome of the consultation result in agreement that the proposal for a new school be progressed, and this receives approval from the Council, the required additional capital and revenue funding necessary would require to be considered by Council as part of future budget processes.
- 6.8 However, this project is identified as being required in the Local Development Plan Action Programme. The financial implications on future capital and revenue budgets of the adopted Local Development Plan Action Programme, which includes for the provision of a new school in North Leith, were reported to the Finance and Resources Committee in January 2017. This report provided an update on the details of the potential funding sources available to the Council to support this infrastructure and the alternative supplementary income streams to be investigated.
- 6.9 A market valuation estimate suggests that a capital receipt of £0.8m could be achieved through the sale of the existing Victoria Primary School site which could be set against the capital costs of the project. It may ultimately be necessary for this sale to progress to provide funding for a new school. However, it is acknowledged that there is demand within the Newhaven community for alternative uses of the Victoria Primary School building to be considered, should it no longer be required to serve as a primary school. The Council will consider these alternatives and the impact they may have on the affordability of a new school and make recommendations as part of the Outcomes of the Consultation Report to the Council meeting in June 2017.
- 6.10 Any capital costs associated with the provision of a temporary solution at Victoria Primary School until such time as the new school is delivered will be considered as part of the option developed with the working group at Victoria Primary School. The funding for this temporary arrangement will be met through the Council's Rising Rolls budget.

7 Indicative Construction Timescales

- 7.1 The timescales for the delivery of the new Victoria Primary School are entirely dependent upon the necessary funding being approved and provided to deliver the project.
- 7.2 Table 8 (below) sets out the indicative construction timescales which would apply based on an assumed date of initiation following conclusion of the consultation and Council approval to progress being granted at the full Council Meeting in June 2017. These timescales assume, and are subject to funding for the project also being identified prior to the conclusion of the consultation.

Table 8: Indicative Construction Timescales

Conclusion of consultation and approval of Option to be progressed	June 2017
Design Development to RIBA Stage 2	+3 months
Design Development to RIBA Stage 3 (submit for Planning)	+3 months
Design Development to RIBA Stage 4 and completion of planning	+4 months
Complete construction contract tender process and award contract	+5 months
Construction Completion	+18 months
Estimated Opening Date	August 2020

8 Consultation Process

- 8.1 The Schools (Consultation) (Scotland) Act 2010, as amended by the Children and Young People (Scotland) Act 2014, sets out the statutory consultation requirements for:
- The establishment of a new school;
 - The relocation of a stage of education;
 - Changes to existing admission arrangements (such as catchment change); and
 - The closure of a stage of education.
- 8.2 The prescribed consultees vary for each of the above. Although a closure is not proposed, the requirements for a closure encompass all the necessary consultees and it is this process that will be followed to ensure full compliance

with all the requirements of the Act. Accordingly, consultees will be as follows (where relevant):

- the Parent Council of any affected school;
- the parents of the pupils at any affected school;
- the parents of any children expected to attend any affected school within two years of the date of publication of the proposal paper;
- the pupils at any affected school (in so far as the education authority considers them to be of a suitable age and maturity);
- the staff (teaching and other) at any affected school;
- any trade union which appears to the education authority to be representative of the staff (teaching and other) at any affected school;
- the community councils (if any);
- the Roman Catholic Church;
- any other education authority that the education authority considers relevant;
- any other users of any affected school that the education authority considers relevant.

8.3 The extent of the consultation with pupils at the affected schools and the appropriate means of engaging with those pupils will be discussed in detail with each school's management team.

8.4 The consultation period will run for a 6 week period from Monday 30 January 2017 to Friday 17 March 2017 and the paper will be made available electronically and in paper format and copies will be available for inspection at the Council Offices at Waverley Court, Central Library, Leith Library and at the schools affected by the proposals.

8.5 Two public meetings will be held in respect of the proposals at the venues listed below which will give interested parties a more formal opportunity to express their views. Representatives of the Council will be present at the meetings to outline the proposals, assist discussions and answer questions. Free childcare and/or translation services can be provided at each public meeting if requests for these services are made to (0131) 469 3161 no later than Monday 6 February 2017. A record of each public meeting will be taken by the Council.

Venue	Date	Time
Trinity Primary School	Tuesday, 21 February 2017	18:30 – 20:30
Victoria Primary School	Monday, 27 February 2017	18:30 – 20:30

8.6 All comments received will be recorded and represented in the final report regarding the outcomes of the consultation, along with the Council's response to those comments. Individual responses will not be provided to submissions made during the consultation.

- 8.7 The Council website will contain information on the consultation and this will be updated as necessary: www.edinburgh.gov.uk/newvictoriaschool.
- 8.8 Respondents are encouraged to use the response questionnaire which has been produced and is provided in Appendix 1. The response questionnaire can also be completed online at www.edinburgh.gov.uk/newvictoriaschool. Responses can also be e-mailed directly to new.victoriaschool@edinburgh.gov.uk or posted to the following address:
- Alistair Gaw
Executive Director of Communities and Families
The City of Edinburgh Council
Council Headquarters
Waverley Court
Level 1:2
4 East Market Street
Edinburgh EH8 8BG
- 8.9 All responses, whether by letter, e-mail or using the online questionnaire should be received no later than 5pm on Friday, 17 March 2017.
- 8.10 Once the public consultation phase finishes, details of the representations received will be issued to Education Scotland for their consideration of the educational effects of the proposals. Education Scotland will issue a report on their findings which will be included in the final Council report on the consultation.
- 8.11 Following the conclusion of the consultation period and after consideration of the representations received and the views of Education Scotland on the educational benefits of the proposal, a report on the Outcomes of the Consultation will be presented to the Council for consideration. The report will be made publicly available and notification will be given to those individuals or groups that have made representations during the consultation period. The report will include a summary of written representations received during the consultation period and representations made at the public meeting along with the Council response to representations made and also to any issues raised by Education Scotland.
- 8.12 It is anticipated that the consultation report, setting out recommendations, will be presented to a Meeting of the Council in June 2017. The report will be published three weeks in advance of the Council meeting.

APPENDIX 1 – Response Questionnaire

Statutory Consultation on Proposal to relocate Victoria Primary School to a new building in the Western Harbour

Introduction

It is proposed that Victoria Primary School be relocated to a new school site in the Western Harbour and that a catchment change be undertaken with Trinity Primary School to address accommodation issues in the Trinity and Victoria areas.

It is also proposed that the catchment boundaries of Victoria Primary School, Holy Cross RC Primary School, Trinity Academy and St Thomas of Aquin's RC High School be realigned so that they include the sections of the Western Harbour area currently not contained within any catchment area.

You can read the background to the consultation in the "Rising School Rolls" report to the Council's Education, Children and Families Committee on 13 December 2016.

The full details of the proposals are available in the statutory consultation paper which you should read before completing this questionnaire. The statutory consultation paper is available online at www.edinburgh.gov.uk/newvictoriaschool and copies are available in the affected schools, Leith Library, Central Library and the Council Offices at Waverley Court.

Why we are consulting?

The Council has a legal obligation to carry out a statutory consultation under the Schools (Consultation) (Scotland) Act 2010 as amended by the Children and Young People (Scotland) Act 2014. The proposals put forward will have implications for families and we want to hear the views of anyone affected by the proposals. All comments made during the statutory consultation period will be recorded and represented in a final report to be considered by Council in June 2017.

This questionnaire should be completed and returned no later than 5pm on Friday, 17 March 2017. All personal information in the questionnaire is for internal use only and will not be made public however the responses to questions 6 and 7 may be reflected either in whole, or in part, in the report to Council but on an anonymised basis. The questionnaire can be completed online at the following link www.edinburgh.gov.uk/newvictoriaschool or can be completed in the following pages and returned to the following address:

Alastair Gaw
Acting Executive Director of Communities and Families
The City of Edinburgh Council
Council Headquarters
Waverley Court
Level 1:2, 4 East Market Street
Edinburgh EH8 8BG

Responses can also be made in writing to the address above or by e-mail to the following address:
new.victoriaschool@edinburgh.gov.uk

Questionnaire

Question 1

What is your name?

Name

Question 2

What is your email address? (Optional)

Email

Question 3

What is your postcode?

Postcode

Question 4

What is your main interest in the consultation?

Please select (tick) all items that apply:

- ☐ Parent/Carer of school child
- ☐ Parent/Carer of school child with younger sibling/s
- ☐ Parent/Carer of pre-school child
- ☐ School Staff
- ☐ Pupil
- ☐ Local resident
- ☐ Local organisation
- ☐ Other

If you are answering on behalf of an organisation, or for other reasons, please explain below.

Question 5

Do you have a child or children in a school or nursery classes at the moment?

Please select (tick) only one item.

No ☐

Yes ☐

If yes please tell us the name(s) of their school or the Early Years establishment they attend.

☐ Trinity Primary School

☐ Fort Early Year Centre

☐ Victoria Primary School

☐ Trinity Academy

☐ St Thomas of Aquin's RC High School

☐ Holy Cross RC Primary School

☐ Other (please specify)

Question 6

Do you support the proposal as detailed in the statutory consultation paper?

Please select (tick) only one item.

Yes ☐

No ☐

If you do not support the proposal, please give your reasons below:

Question 7

Do you have any other comments or suggestions?

Comments or suggestions can also be emailed to new.victoriaschool@edinburgh.gov.uk

APPENDIX 2 - List of affected addresses

The addresses listed below are properties which were registered with the Council as at January 2016 and will be directly affected by the proposals. For confirmation of which catchment area will apply to properties not listed below please refer to the proposed catchment area maps in Appendices 4, 5 and 6 or email new.victoriaschool@edinburgh.gov.uk or call 0131 469 3161.

The first table below shows the addresses affected by the proposed transfer of a section of the Trinity Primary School catchment to Victoria Primary School. The second table shows all the addresses in the northern and eastern section of the Western Harbour affected by the establishment of catchment boundaries for non-denominational, Roman Catholic, primary and secondary school provision.

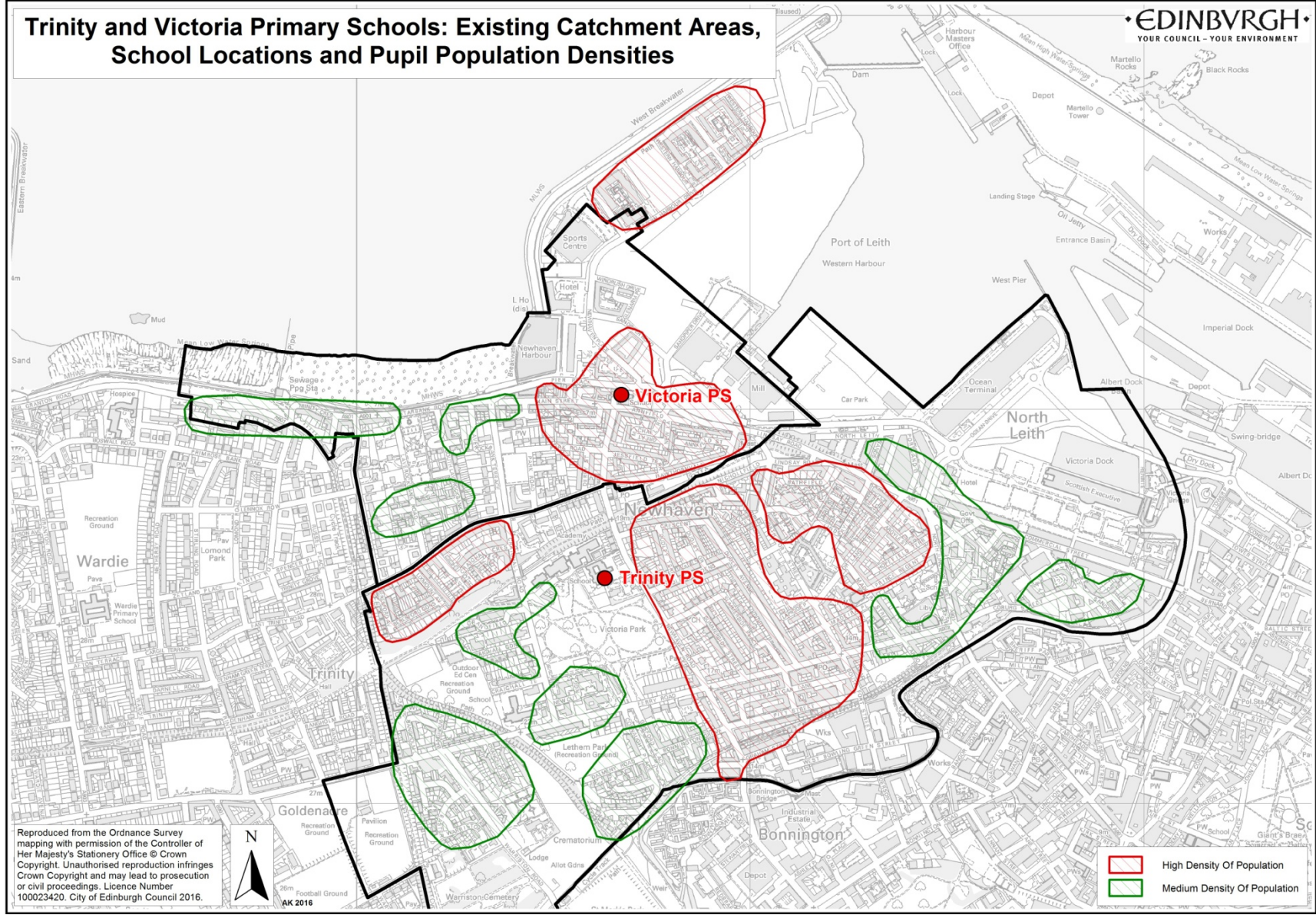
Proposed Transfer from Trinity Primary School to Victoria Primary School

Street	Properties
Commercial Street	67, 72, 74, 76, 78, 80, 82, 84, 86, 88, 92, 96, 98, 102, 104, 106, 108, 110, 112, 142, 144, 146, 148, 150
Dock Place	1A, 1C, 2, 3, 6, 11, 12, 12A, 14
Lindsay Road	195, 196, 197, 198, 199, 200
North Leith Sands	1, 3, 4, 6, 7, 8, 9, 10, 13, 14, 15, 16, 17, 18, 19, 20, 21, 22, 23, 24, 25
Ocean Drive	100, 101, 102, 116, 118, 120
Portland Gardens	1, 2, 3, 4, 5, 6, 7, 8, 9A
Portland Row	1, 2, 3, 4, 5, 6, 7, 8A, 8B, 8C
Rennie's Isle	1, 5, 6, 7, 9, 10, 11, 13, 14, 15, 16, 17, 18, 19, 20, 21
Sandport	1, 2, 3, 4, 5, 6, 7, 8, 9, 10, 11, 12, 13, 14, 15, 16, 17
Victoria Quay	1

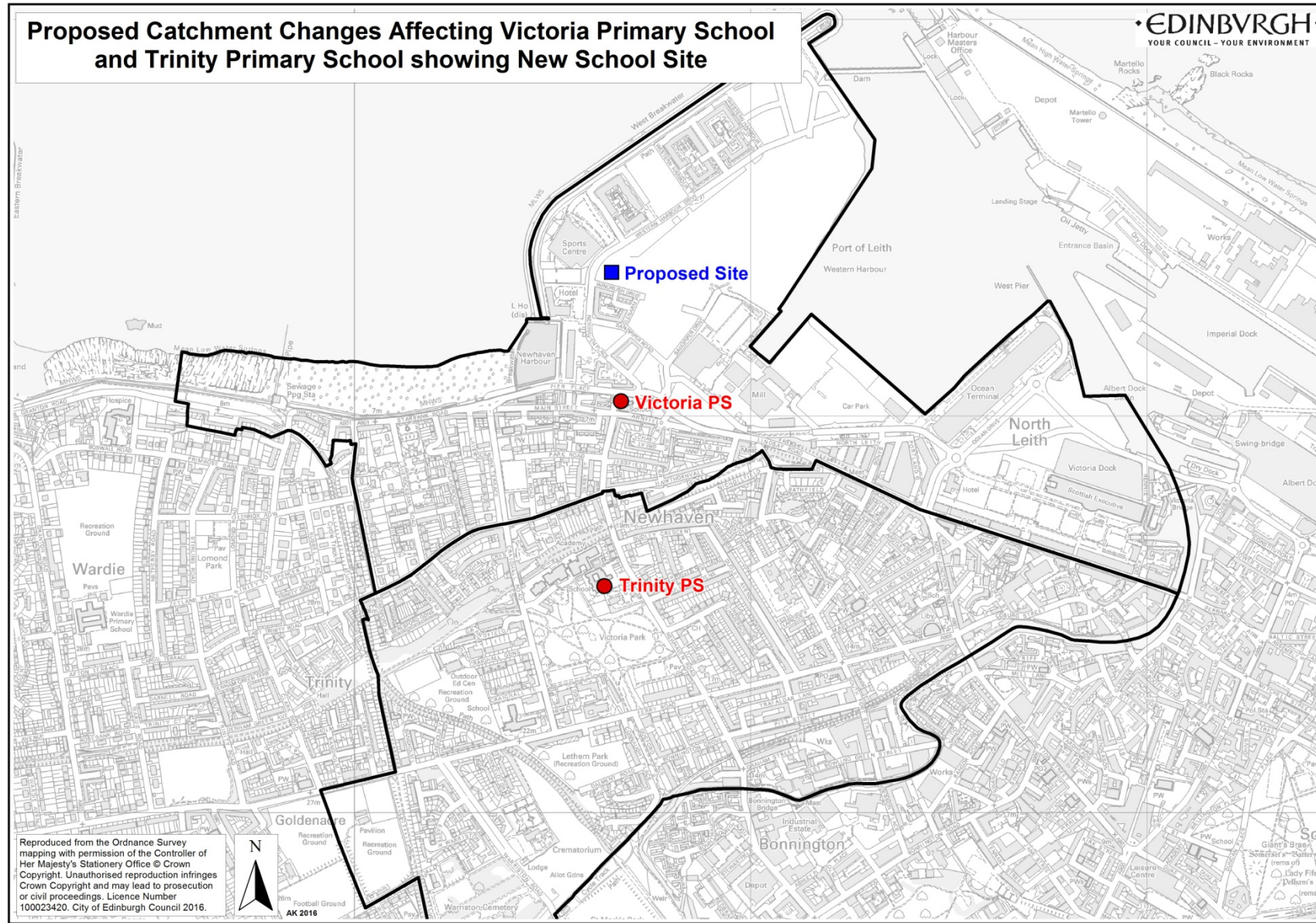
Addresses in Western Harbour to be aligned with Victoria Primary School, Holy Cross RC Primary School, Trinity Academy and St Thomas of Aquin's RC High School

Street	Properties
Western Harbour Breakwater	1, 2, 3, 8, 9, 10, 11
Western Harbour Midway	1, 2, 3, 4, 5, 6, 7, 8, 9, 10, 11
Western Harbour Place	2, 4, 6
Western Harbour Terrace	2, 4, 6, 8, 10
Western Harbour View	1, 3, 5, 7, 9
Western Harbour Way	1, 3, 5

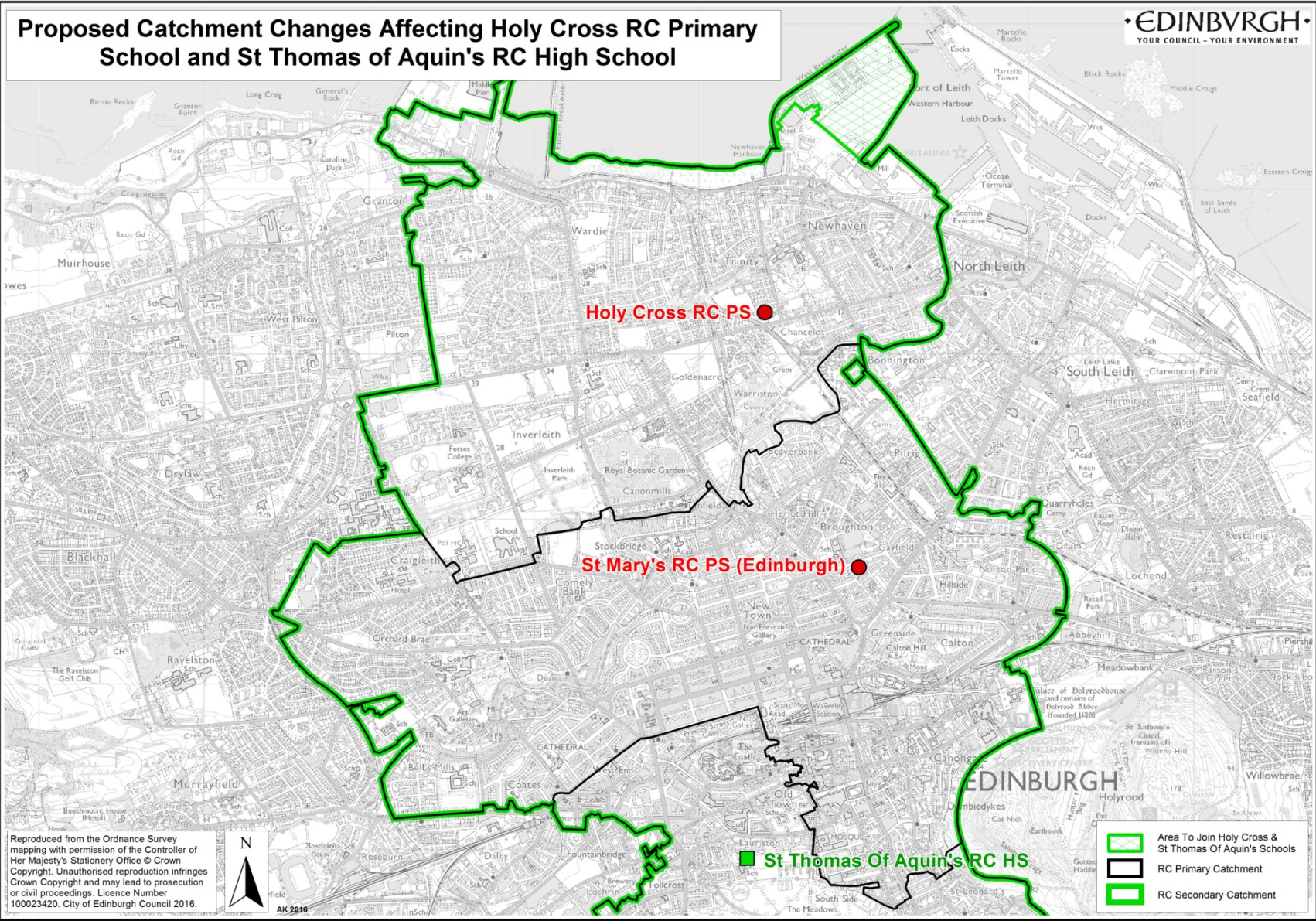
APPENDIX 3



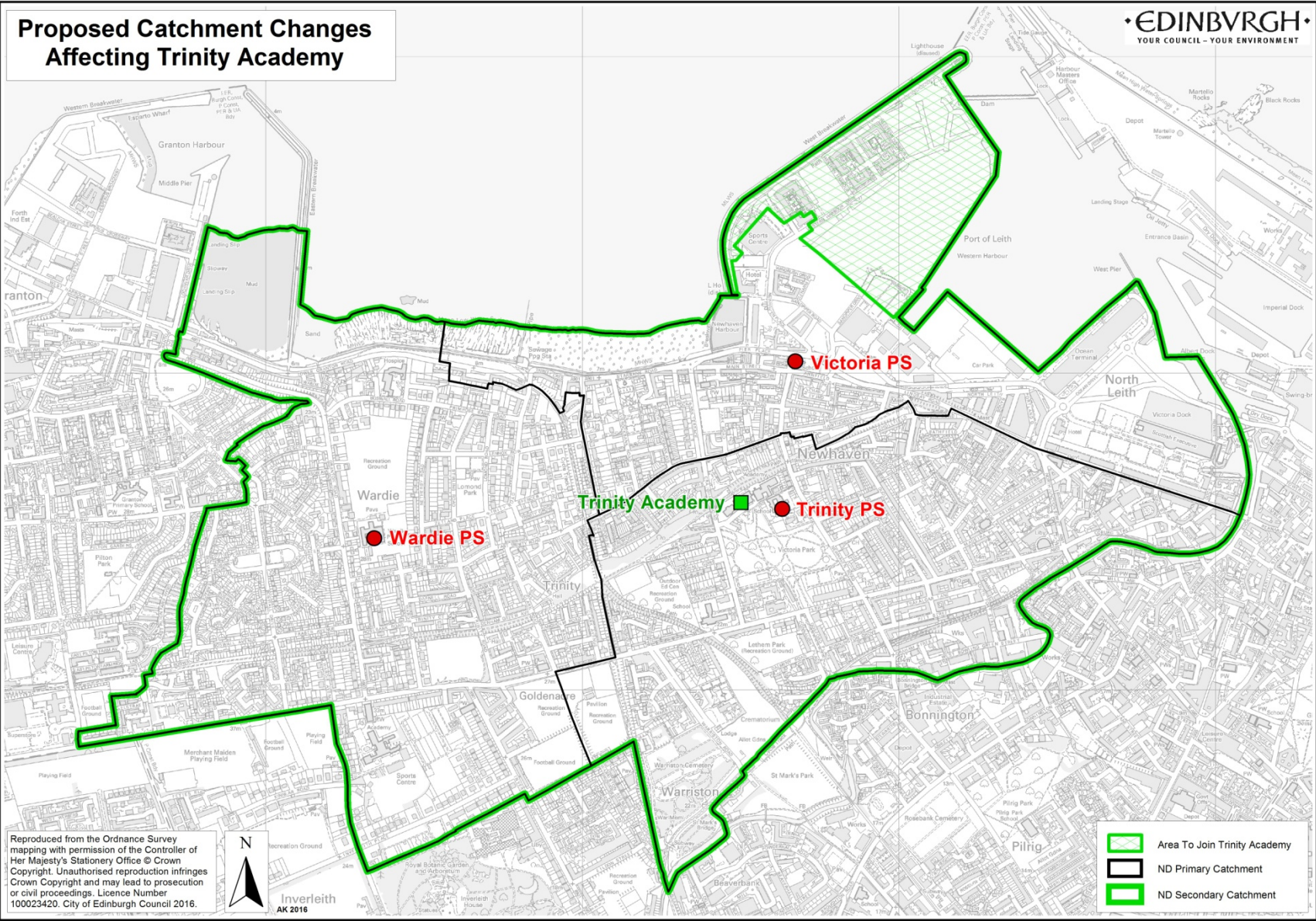
APPENDIX 4

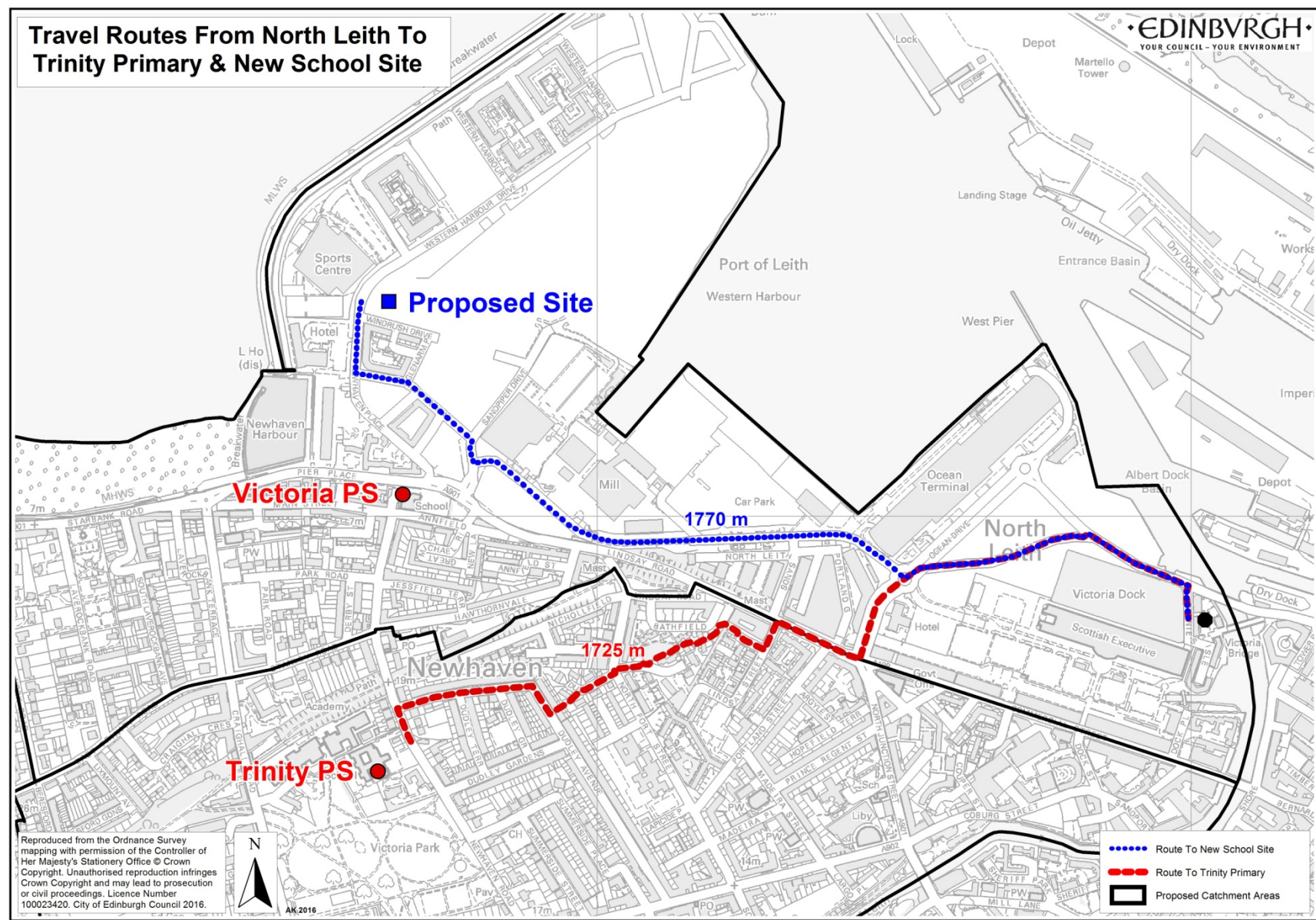


APPENDIX 5

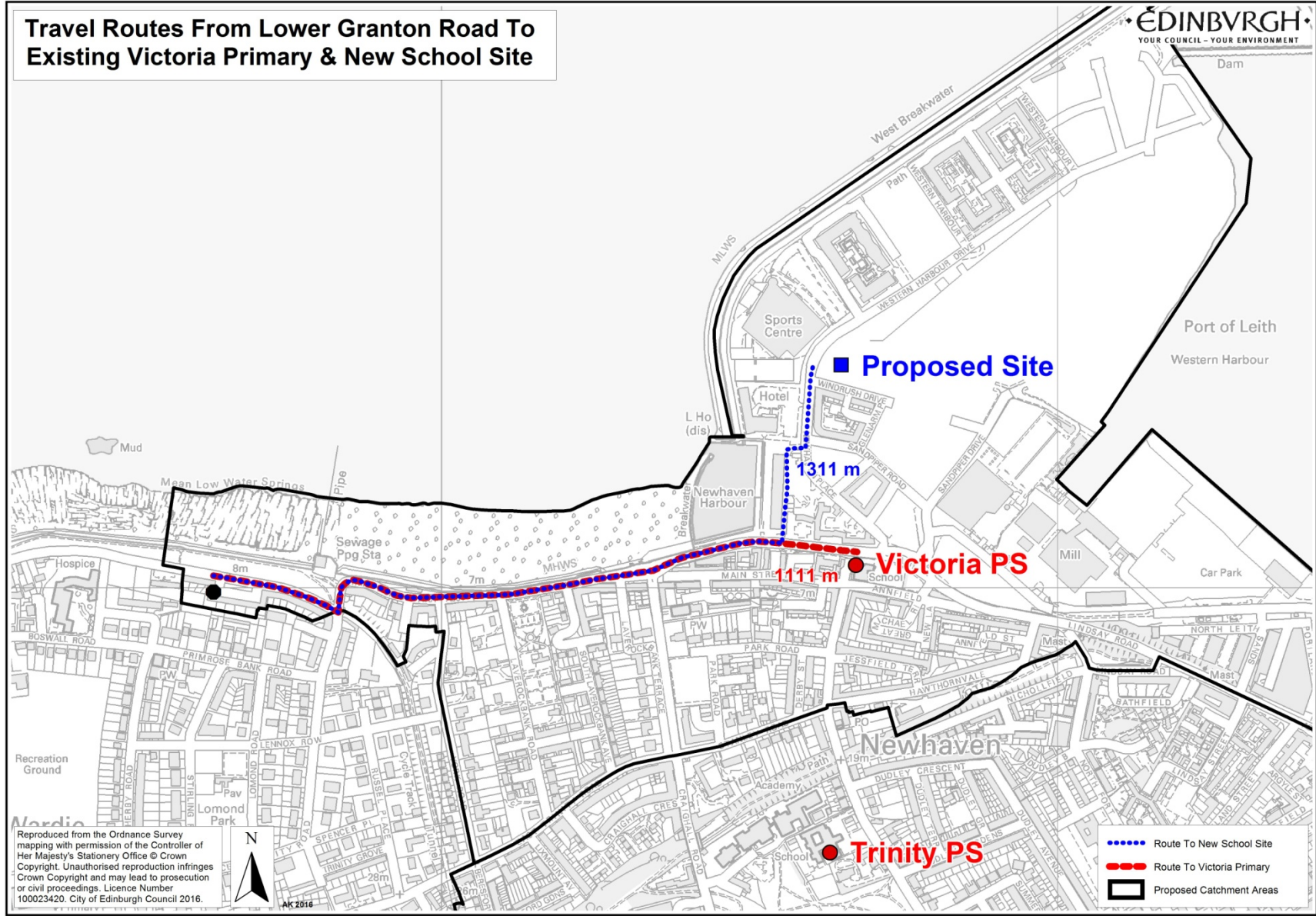


APPENDIX 6





APPENDIX 8



APPENDIX 9 – Inspection, Attainment and Achievement Information for Trinity Primary School and Victoria Primary School

With the introduction of the Curriculum of Excellence (CfE), there is no one national measure of attainment for primary schools. However, the City of Edinburgh Council uses standardised assessments to report on attainment/improvements in performance for its primary schools and pupils.

Standardised assessments are age-based, professional educational tools that have been used for many years as part of the overall assessment picture in schools. They produce a standard score for each pupil and a mean standardised score for each year group.

In Edinburgh, for each school, data has been collected at each level: i.e. Early (start of P1); First (end of P4) and; Second (end of P7) in Languages and Mathematics. The information is used by schools as part of the wider assessment picture to make evaluations about improvements in performance. The latest standardised assessment data (mean standard scores) for the primary schools involved in this statutory consultation is provided in the following tables.

P1 Baseline Literacy

Primary School	2013-14	2014-15	2015-16
Trinity	109	104	110
Victoria	100	101	101

P1 Baseline Numeracy

2013-14	2014-15	2015-16
112	107	113
98	102	106

P4 Reading

Primary School	2013-14	2014-15	2015-16
Trinity	99	105	101
Victoria	98	103	91

P4 Mathematics

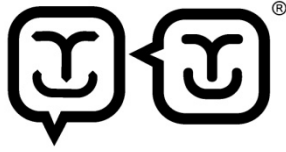
2013-14	2014-15	2015-16
103	103	95
104	101	89

P7 Reading

Primary School	2013-14	2014-15	2015-16
Trinity	108	106	109
Victoria	101	106	101

P7 Mathematics

2013-14	2014-15	2015-16
102	96	95
98	102	93



HAPPY TO TRANSLATE

আনন্দের সঙ্গে অনুবাদ করব ترجمے کے لئے حاضر

يسعدنا توفير الترجمة MOŻEMY PRZETŁUMACZYĆ 很樂意翻譯

You can get this document on tape, in Braille, large print and various computer formats if you ask us. Please contact ITS on 0131 242 8181 and quote reference number **16-1116**. ITS can also give information on community language translations. You can get more copies of this document by calling 0131 469 3161.