

NOTES:

Middle Section

Short Term; 0 - 6 months

1. Conduct Surveys and collate data
2. Design work and necessary consultation
3. Commence Statutory processes
4. Signs and white lines

Medium Term; 6 to 18 months

1. Design work and necessary consultation
2. Installation of D islands
3. Revisions to junctions
4. Parking revisions and physical build-outs
5. Yellow lines - parking restrictions
6. Cycle lane
7. VASS if justified by assessments
8. Introduction of 20mph limit

This period will lead to the evaluation of Braid Road 20mph

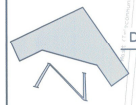
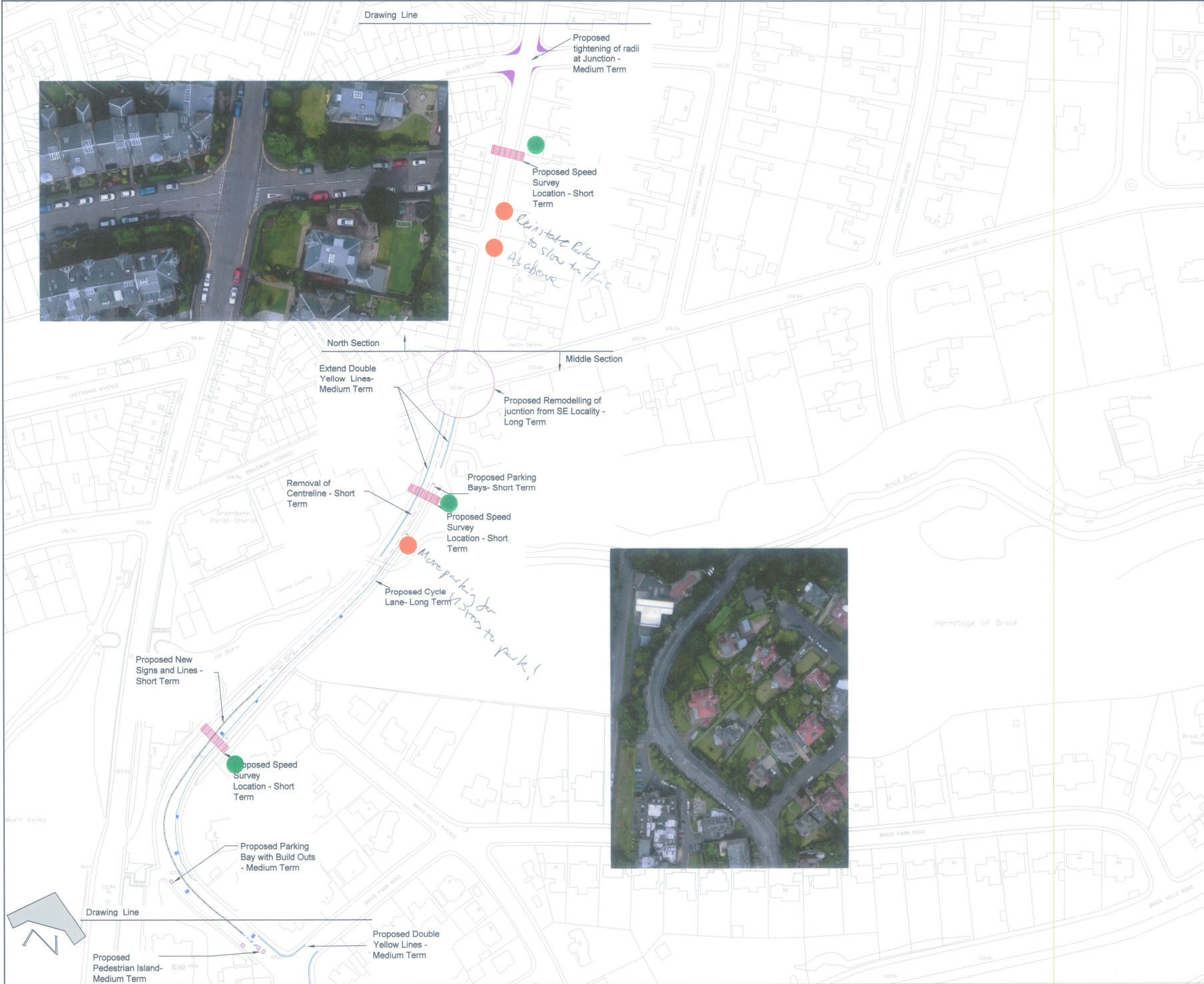
Long term; 18 months or more

1. Design work and necessary consultation
2. Installation of footway at golf course and associated D Island
3. Review of priority changes - raised table
4. Evaluation and review of 20mph limit and consideration of any additional measures eg
 - a. Vehicle Activated Speed Signs
 - b. Speed bumps

This period would also encompass the potential Braidburn Terrace scheme proposed by the South East Locality

This map is reproduced from Ordnance Survey material with the permission of Ordnance Survey on behalf of the Controller of Her Majesty's Stationery Office. Unauthorised reproduction infringes Crown copyright and may lead to prosecution or civil proceedings.

100023420 (2016)



REVISION	DETAILS	BY	DATE	CHECKED

EDINBURGH
THE CITY OF EDINBURGH COUNCIL

The City of Edinburgh Council
Waverley Court
4 East Market Street
Edinburgh, EH8 8BG
Telephone: 0131 200 2000

Braid Road
Layout Proposals
General Arrangement
Drawing 3

Date: 16/01/17
Scale: 1/1000
Drawn by: S Monagh-Gleaton
Checked by:
Reviewed by:

Middle Section

Short Term; 0 - 6 months

1. Conduct Surveys and collate data
2. Design work and necessary consultation
3. Commence Statutory processes
4. Signs and white lines

Medium Term; 6 to 18 months

1. Design work and necessary consultation
2. Installation of D islands
3. Revisions to junctions
4. Parking revisions and physical build-outs
5. Yellow lines - parking restrictions
6. Cycle lane
7. VASS if justified by assessments
8. Introduction of 20mph limit

This period will lead to the evaluation of Braid Road 20mph

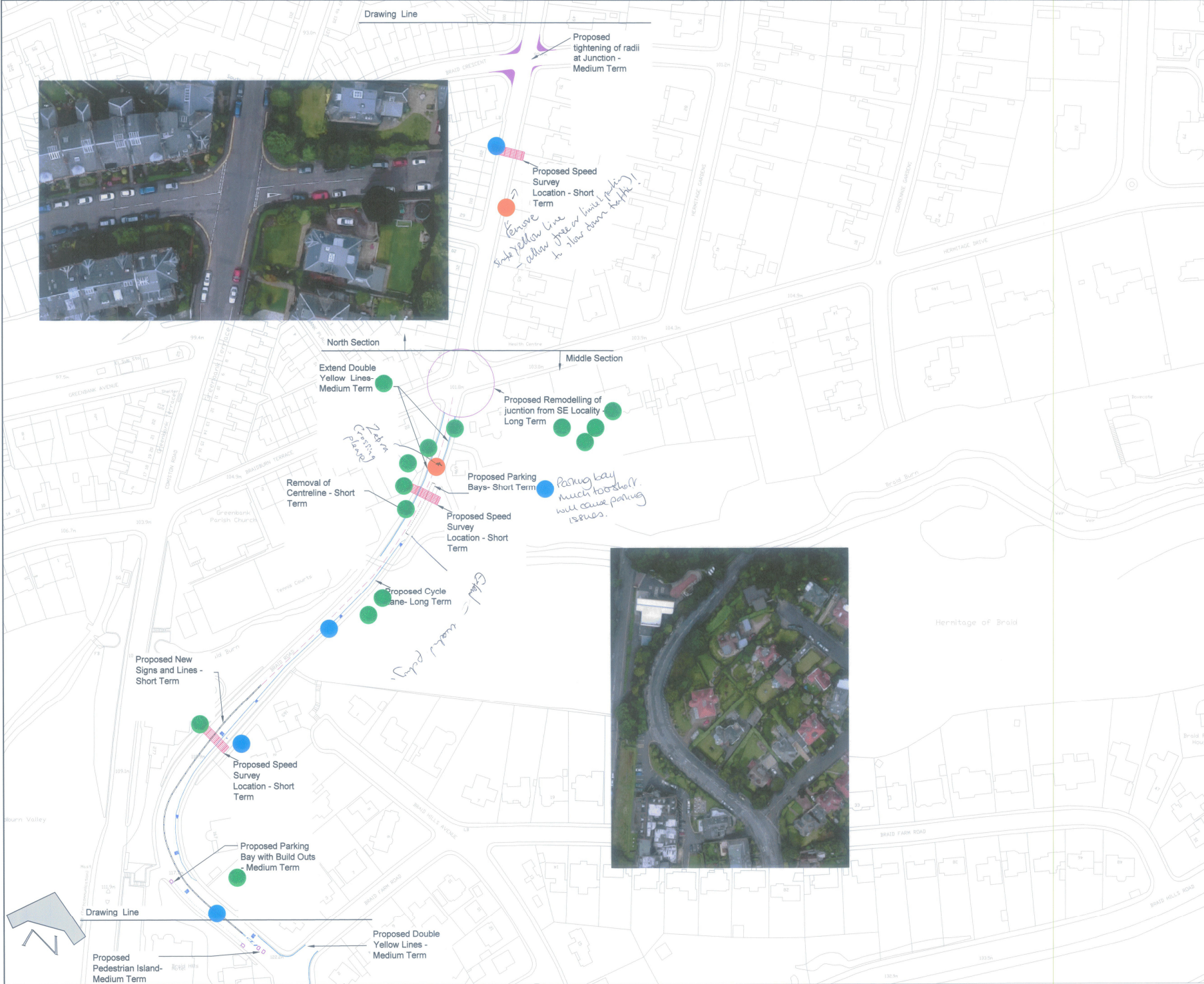
Long term; 18 months or more

1. Design work and necessary consultation
2. Installation of footway at golf course and associated D Island
3. Review of priority changes - raised table
4. Evaluation and review of 20mph limit and consideration of any additional measures eg
 - a. Vehicle Activated Speed Signs
 - b. Speed bumps

This period would also encompass the potential Braidburn Terrace scheme proposed by the South East Locality

This map is reproduced from Ordnance Survey material with the permission of Ordnance Survey on behalf of the Controller of Her Majesty's Stationery Office © Crown copyright. Unauthorised reproduction infringes Crown copyright and may lead to prosecution or civil proceedings.

100023420 (2016)



REVISION	DETAILS	BY	DATE	CHECKED



The City of Edinburgh Council
Waverley Court
4 East Market Street
Edinburgh, EH8 8BG
Telephone: 0131 200 2000

PLANNING AND TRANSPORT
ROAD SAFETY AND ACTIVE
TRAFFIC

Braid Road
Layout Proposals
General Arrangement
Drawing 3

Date: 18/01/17
Scale: 1/1000
Drawn by: S Monagh-Bailey
Checked by:
Reviewed by:

NOTES:

Middle Section

Short Term; 0 - 6 months

1. Conduct Surveys and collate data
2. Design work and necessary consultation
3. Commence Statutory processes
4. Signs and white lines

Medium Term; 6 to 18 months

1. Design work and necessary consultation
2. Installation of D islands
3. Revisions to junctions
4. Parking revisions and physical build-outs
5. Yellow lines - parking restrictions
6. Cycle lane
7. VASS if justified by assessments
8. Introduction of 20mph limit

This period will lead to the evaluation of Braid Road 20mph

Long term; 18 months or more

1. Design work and necessary consultation
2. Installation of footway at golf course and associated D Island
3. Review of priority changes - raised table
4. Evaluation and review of 20mph limit and consideration of any additional measures eg
 - a. Vehicle Activated Speed Signs
 - b. Speed bumps

This period would also encompass the potential Braidburn Terrace scheme proposed by the South East Locality

This map is reproduced from Ordnance Survey material with the permission of Ordnance Survey on behalf of the Controller of Her Majesty's Stationery Office © Crown copyright. Unauthorised reproduction infringes Crown copyright and may lead to prosecution or civil proceedings.

100023420 (2018)



Drawing Line

Proposed tightening of radii at Junction - Medium Term

Proposed Speed Survey Location - Short Term

North Section

Extend Double Yellow Lines - Medium Term

Middle Section

Proposed Remodelling of junction from SE Locality - Long Term

Proposed Parking Bays - Short Term

Removal of Centreline - Short Term

Proposed Speed Survey Location - Short Term

Proposed Cycle Lane - Long Term

Green for cycle lane

Proposed New Signs and Lines - Short Term

Proposed Speed Survey Location - Short Term

Proposed Parking Bay with Build Outs - Medium Term

Drawing Line

Proposed Pedestrian Island - Medium Term

Proposed Double Yellow Lines - Medium Term

REVISION	DETAILS	BY	DATE	CHECKED



The City of Edinburgh Council
Waverley Court
4 East Market Street
Edinburgh, EH8 8BG
Telephone: 0131 200 2000

PLANNING AND TRANSPORT
ROADS, SAFETY AND ACTIVE
TRAFFIC

Braid Road
Layout Proposals
General Arrangement
Drawing 3

Date: 18/01/17

Scale: 1/1000

Drawn by: S Moneth-Stanton

Checked by:

Reviewed by:

