

Drawing Line



Proposed area of footpath at entrance and Pedestrian Island-Medium Term

Proposed Solid White Line and Hatching with Blind Summit Signs-Short Term

Proposed 200m Footpath and Pedestrian Refuge Island-Long Term

Proposed Speed Survey Location - Short Term



NOTES:

South Section

Short Term; 0 - 6 months

- 1. Conduct Surveys and collate data
- 2. Design work and necessary consultation
- 3. Commence Statutory processes
- 4. Signs and white lines

Medium Term; 6 to 18 months

- 1. Design work and necessary consultation
- 2. Installation of D Islands
- 3. Revisions to junctions
- 4. Parking revisions and physical build-outs
- 5. Yellow lines - parking restrictions
- 6. Cycle lane
- 7. VASS if justified by assessments
- 8. Introduction of 20mph limit

This period will lead to the evaluation of Braid Road 20mph

Long term; 18 months or more

- 1. Design work and necessary consultation
- 2. Installation of footway at golf course and associated D Island
- 3. Review of priority changes - raised table
- 4. Evaluation and review of 20mph limit and consideration of any additional measures eg
 - a. Vehicle Activated Speed Signs
 - b. Speed bumps

This period would also encompass the potential Braidburn Terrace scheme proposed by the South East Locality

This map is reproduced from Ordnance Survey material with the permission of Ordnance Survey on behalf of the Controller of Her Majesty's Stationery Office © Crown copyright. Unauthorised reproduction infringes Crown copyright and may lead to prosecution or civil proceedings.

100023420 (2016)

REVISION	DETAILS	BY	DATE	CHECKED



The City of Edinburgh Council
Waverley Court
4 East Market Street
Edinburgh, EH8 8BG
Telephone: 0131 200 2000

PLANNING AND TRANSPORT
ROADS, TRAFFIC AND ACTIVE
TRAFFIC
PLANNING

Braid Road
Layout Proposals
General Arrangement
Drawing 1

Date: 18/01/17	Scale: 1:1000	Drawn by: S Monagh-Shallon	Checked by:	Reviewed by:
----------------	---------------	----------------------------	-------------	--------------

NOTES:

South Section

Short Term; 0 - 6 months

1. Conduct Surveys and collate data
2. Design work and necessary consultation
3. Commence Statutory processes
4. Signs and white lines

Medium Term; 6 to 18 months

1. Design work and necessary consultation
2. Installation of D islands
3. Revisions to junctions
4. Parking revisions and physical build-outs
5. Yellow lines - parking restrictions
6. Cycle lane
7. VASS if justified by assessments
8. Introduction of 20mph limit

This period will lead to the evaluation of Braid Road 20mph

Long term; 18 months or more

1. Design work and necessary consultation
2. Installation of footway at golf course and associated D Island
3. Review of priority changes - raised table
4. Evaluation and review of 20mph limit and consideration of any additional measures eg
 - a. Vehicle Activated Speed Signs
 - b. Speed bumps

This period would also encompass the potential Braidburn Terrace scheme proposed by the South East Locality

This map is reproduced from Ordnance Survey material with the permission of Ordnance Survey on behalf of the Controller of Her Majesty's Stationery Office. © Crown copyright. Unauthorised reproduction infringes Crown copyright and may lead to prosecution or civil proceedings.

100023420 (2018)



REVISION	DETAILS	BY	DATE	CHECKED

EDINBURGH
THE CITY OF EDINBURGH COUNCIL

The City of Edinburgh Council
Waverley Court
4 East Market Street
Edinburgh, EH8 8BG
Telephone: 0131 200 2000

PLANNING AND TRANSPORT
ROADS, SAFETY AND ACTIVE
TRAFFIC
Braid Road
Layout Proposals
General Arrangement
Drawing 2

Date: 18/01/17
Scale: 1:1000
Drawn by: S Monagh-Stanton
Checked by:

NOTES:

South Section

Short Term; 0 - 6 months

- 1. Conduct Surveys and collate data
- 2. Design work and necessary consultation
- 3. Commence Statutory processes
- 4. Signs and white lines

Medium Term; 6 to 18 months

- 1. Design work and necessary consultation
- 2. Installation of D islands
- 3. Revisions to junctions
- 4. Parking revisions and physical build-outs
- 5. Yellow lines - parking restrictions
- 6. Cycle lane
- 7. VASS if justified by assessments
- 8. Introduction of 20mph limit

This period will lead to the evaluation of Braid Road 20mph

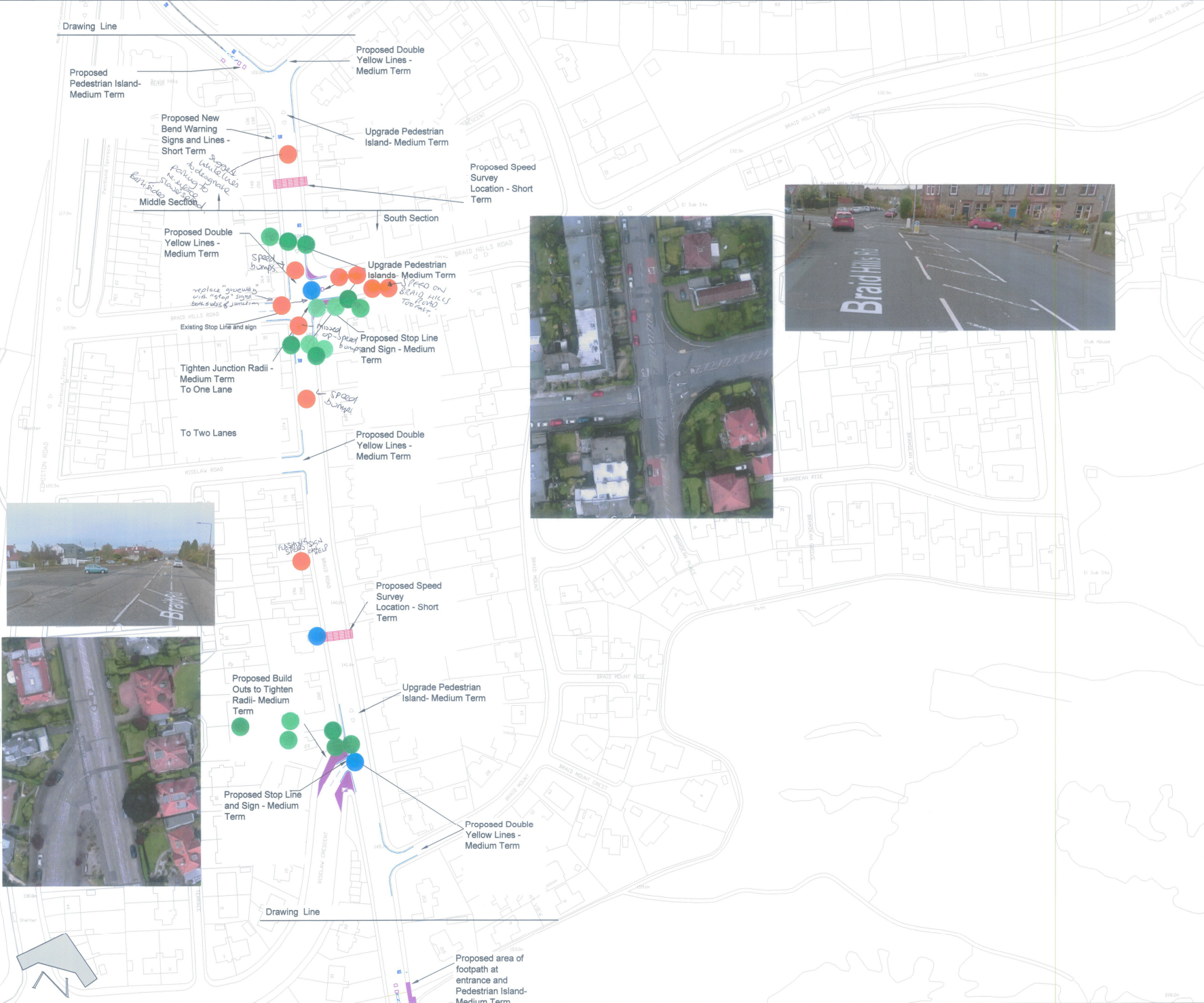
Long term; 18 months or more

- 1. Design work and necessary consultation
- 2. Installation of footway at golf course and associated D Island
- 3. Review of priority changes - raised table
- 4. Evaluation and review of 20mph limit and consideration of any additional measures eg
 - a. Vehicle Activated Speed Signs
 - b. Speed bumps

This period would also encompass the potential Braidburn Terrace scheme proposed by the South East Locality

This map is reproduced from Ordnance Survey material with the permission of Ordnance Survey on behalf of the Controller of Her Majesty's Stationery Office. All Crown copyright. Unauthorised reproduction infringes Crown copyright and may lead to prosecution or civil proceedings.

10002820 (2016)



REVISION	DETAILS	BY	DATE	CHECKED

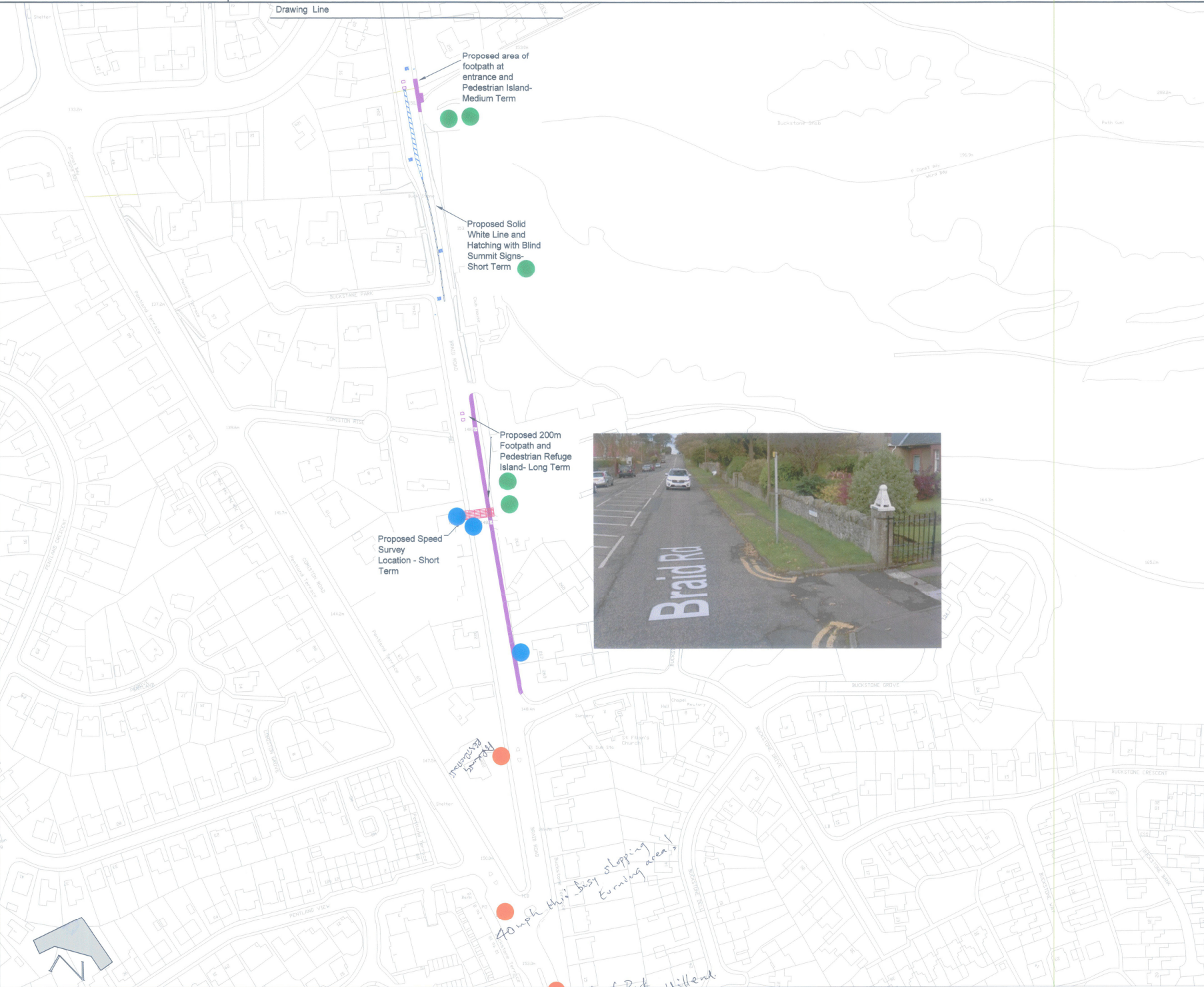
EDINBURGH
THE CITY OF EDINBURGH COUNCIL

The City of Edinburgh Council
Waverley Court
4 East Market Street
Edinburgh, EH8 8BG
Telephone: 0131 200 2000

PLANNING AND TRANSPORT
ROADS AND ACTIVE
TRAFFIC

Braid Road
Layout Proposals
General Arrangement
Drawing 2

Date: 18/01/17
Scale: 1:1000
Drawn by: S Monaghan-Stanton
Checked by:
Reviewed by:



NOTES:

South Section

Short Term; 0 - 6 months

1. Conduct Surveys and collate data
2. Design work and necessary consultation
3. Commence Statutory processes
4. Signs and white lines

Medium Term; 6 to 18 months

1. Design work and necessary consultation
2. Installation of D islands
3. Revisions to junctions
4. Parking revisions and physical build-outs
5. Yellow lines - parking restrictions
6. Cycle lane
7. VASS if justified by assessments
8. Introduction of 20mph limit

This period will lead to the evaluation of Braid Road 20mph

Long term; 18 months or more

1. Design work and necessary consultation
2. Installation of footway at golf course and associated D Island
3. Review of priority changes - raised table
4. Evaluation and review of 20mph limit and consideration of any additional measures eg
 - a. Vehicle Activated Speed Signs
 - b. Speed bumps

This period would also encompass the potential Braidburn Terrace scheme proposed by the South East Locality

This map is reproduced from Ordnance Survey material with the permission of Ordnance Survey on behalf of the Controller of Her Majesty's Stationery Office © Crown copyright. Unauthorised reproduction infringes Crown copyright and may lead to prosecution or civil proceedings.

100029420 (2018)

REVISION	DETAILS	BY	DATE	CHECKED

EDINBURGH
THE CITY OF EDINBURGH COUNCIL

The City of Edinburgh Council
Waverley Court
4 East Market Street
Edinburgh, EH8 8BG
Telephone: 0131 200 2000

PLANNING AND TRANSPORT
ROADS, FEEL AND ACTIVE
SAFE

Braid Road
Layout Proposals
General Arrangement
Drawing 1

Date: 18/01/17
Scale: 1:1000
Drawn by: S Moneth-Stratton
Checked by:
Reviewed by:

South Section

Short Term; 0 - 6 months

1. Conduct Surveys and collate data
2. Design work and necessary consultation
3. Commence Statutory processes
4. Signs and white lines

Medium Term; 6 to 18 months

1. Design work and necessary consultation
2. Installation of D islands
3. Revisions to junctions
4. Parking revisions and physical build-outs
5. Yellow lines - parking restrictions
6. Cycle lane
7. VASS if justified by assessments
8. Introduction of 20mph limit

This period will lead to the evaluation of Braid Road 20mph

Long term; 18 months or more

1. Design work and necessary consultation
2. Installation of footway at golf course and associated D Island
3. Review of priority changes - raised table
4. Evaluation and review of 20mph limit and consideration of any additional measures eg
 - a. Vehicle Activated Speed Signs
 - b. Speed bumps

This period would also encompass the potential Braidburn Terrace scheme proposed by the South East Locality

This map is reproduced from Ordnance Survey material with the permission of Ordnance Survey on behalf of the Controller of the Queen's Stationery Office © Crown copyright. Unauthorised reproduction infringes Crown copyright and may lead to prosecution or civil proceedings.

100023420 (2016)



REVISION	DETAILS	BY	DATE	CHECKED

EDINBURGH
THE CITY OF EDINBURGH COUNCIL

The City of Edinburgh Council
Waverley Court
4 East Market Street
Edinburgh, EH6 8BG
Telephone: 0131 200 2000

PLANNING AND TRANSPORT
ROAD SAFETY AND ACTIVE
TRAVEL

Braid Road
Layout Proposals
General Arrangement
Drawing 2

Date: 18/01/17
Scale: 1:1000
Drawn by: S Morath-Swales
Checked by:
Reviewed by: