

These consultation boards have been prepared by Amey on behalf of the City of Edinburgh Council to give pupils, parents, staff, and the wider community an opportunity to view and comment on proposals for the extension and internal reconfiguration of Craigmount High School.

The proposed extension and internal changes are intended to help Craigmount High School respond to future demands, particularly an anticipated increase in pupil numbers. The aim is to ensure the school can continue to provide a high-quality learning environment that supports both current and future generations of pupils.

Alongside increasing capacity, the proposals seek to address a number of challenges within the existing building. These include limited social and dining spaces for pupils, as well as congestion at key entrance points and along internal circulation routes.

KEY SITE CHANGES

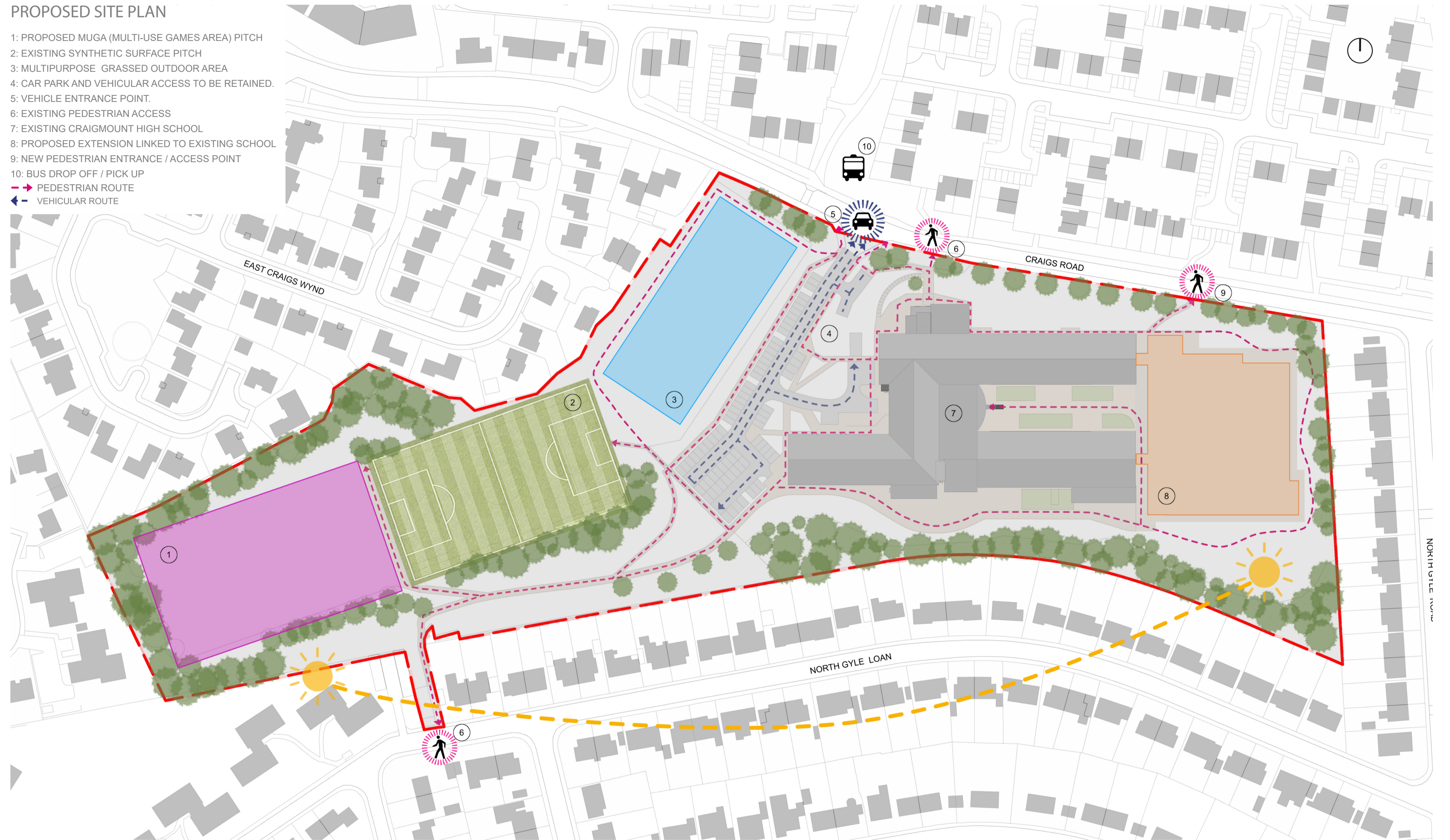
- The extension is proposed as a continuation of the existing school, with additional pupil entrances but no changes to road access or parking anticipated helping to minimise disruption to the surrounding area.
- Works would be focused within a defined construction area to help minimise disruption and maintain safe movement across the campus.
- The proposals aim to increase capacity from around 1,400 to 1,800 pupils, including provision for up to 45 pupils with Additional Support Needs (ASN). This would be achieved through a combination of a new extension and targeted Internal Alterations to the existing building.
- The new extension is proposed on the green space to the east of the existing school building.
- A new synthetic sports pitch is proposed, similar in size to the current facility, to retain outdoor sports provision.
- Internal changes are intended to improve circulation and ease movement throughout the building.
- Social and dining spaces would be enhanced to better support increased pupil numbers.
- Targeted upgrades within the existing building aim to improve usability and bring spaces closer to current standards (without full refurbishment)
- Opportunities are being explored to create more flexible learning spaces, including adapting internal layouts where appropriate.

LANDSCAPE REFERENCE IMAGES



PROPOSED SITE PLAN

- 1: PROPOSED MUGA (MULTI-USE GAMES AREA) PITCH
 - 2: EXISTING SYNTHETIC SURFACE PITCH
 - 3: MULTIPURPOSE GRASSED OUTDOOR AREA
 - 4: CAR PARK AND VEHICULAR ACCESS TO BE RETAINED.
 - 5: VEHICLE ENTRANCE POINT.
 - 6: EXISTING PEDESTRIAN ACCESS
 - 7: EXISTING CRAIGMOUNT HIGH SCHOOL
 - 8: PROPOSED EXTENSION LINKED TO EXISTING SCHOOL
 - 9: NEW PEDESTRIAN ENTRANCE / ACCESS POINT
 - 10: BUS DROP OFF / PICK UP
- PEDESTRIAN ROUTE
— VEHICULAR ROUTE



VIEW FROM CRAIGS ROAD



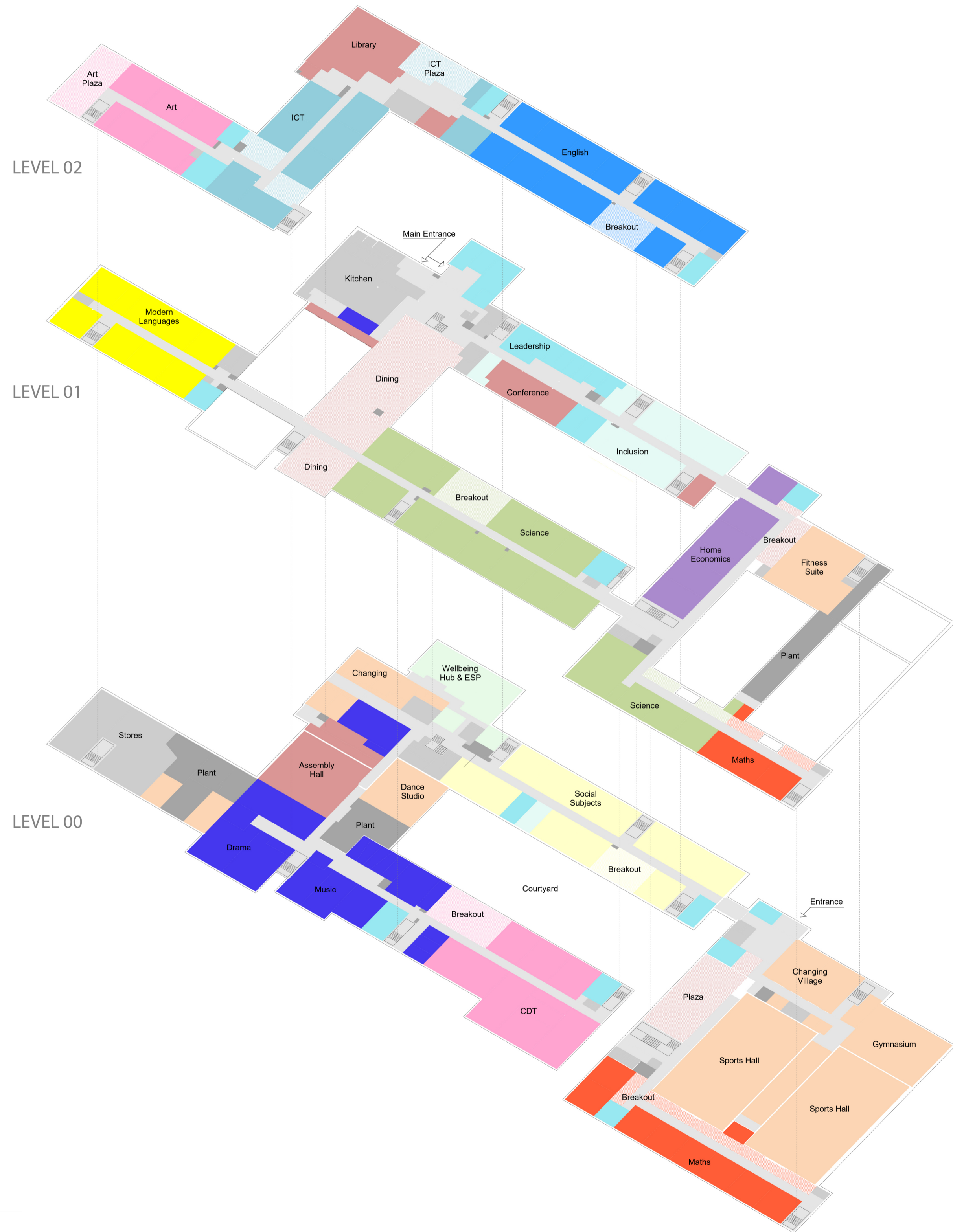
VIEW OF EXTENSION SITE FROM NW CORNER



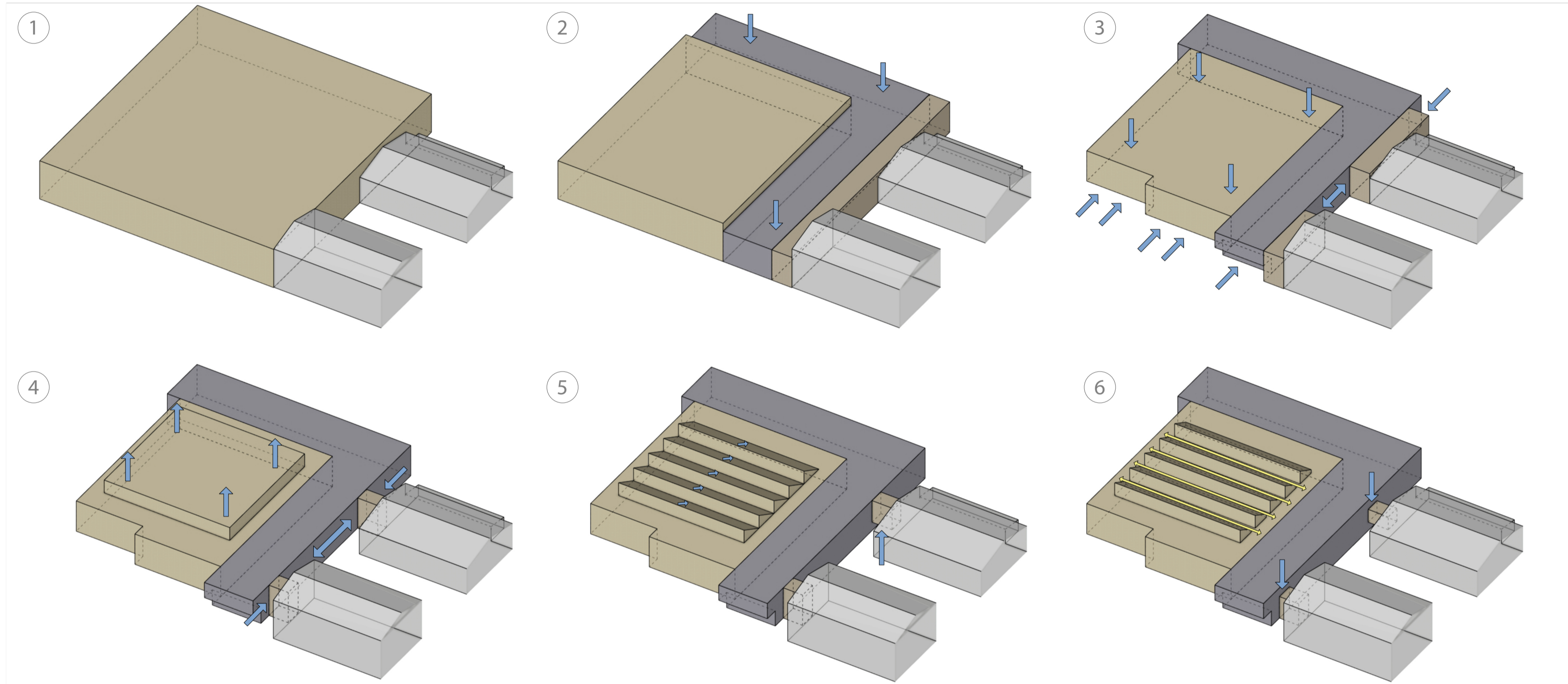
VIEW OF EXTENSION SITE FROM NE CORNER



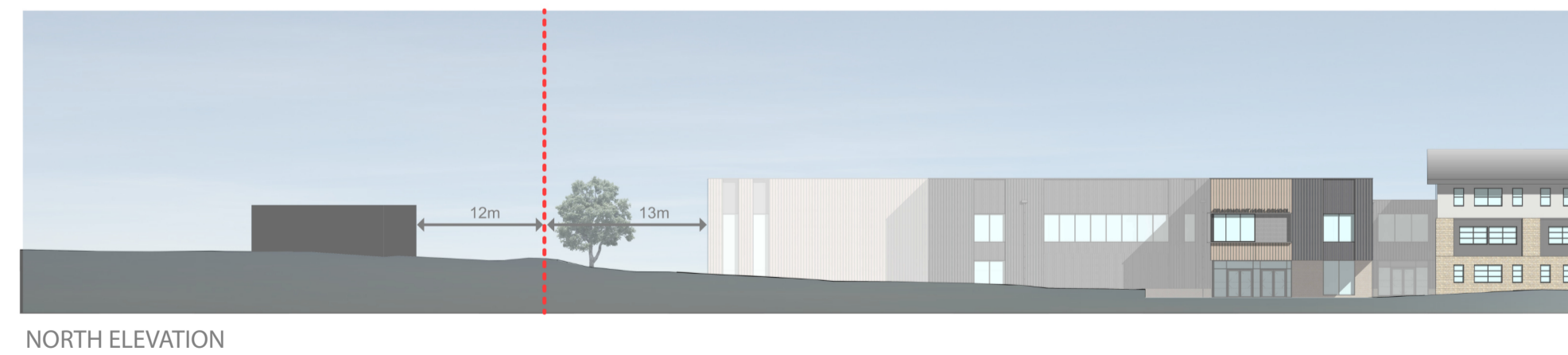
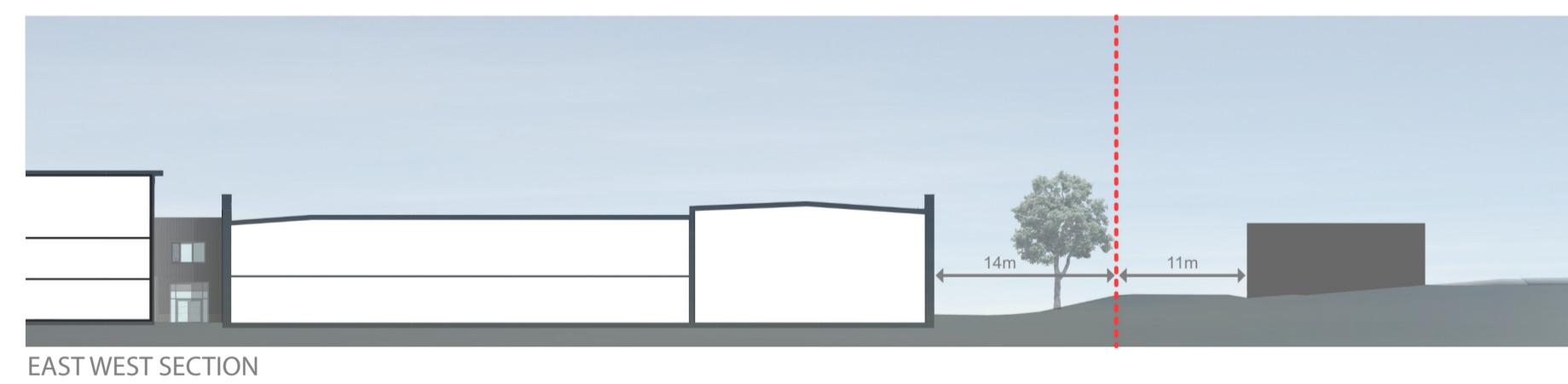
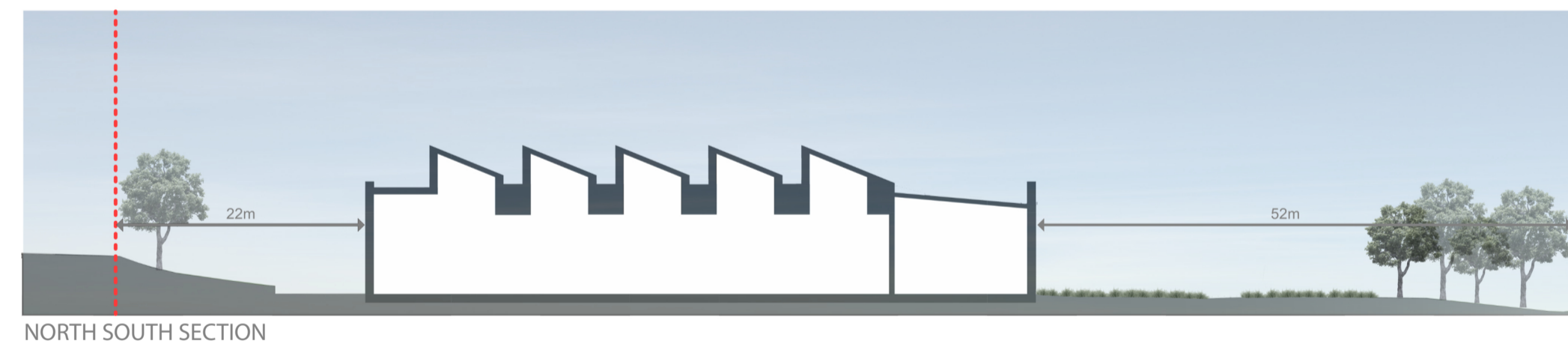
DEPARTMENT ZONING



MASSING DEVELOPMENT



SITE SECTIONS



The massing of the proposed extension has been developed through a series of iterative steps, transforming an initial simple volume into a more refined form that responds to site constraints, programme requirements, and environmental performance.

The process begins with a single unified mass representing the maximum footprint needed for the sports halls, teaching spaces, and associated facilities.

This volume is then divided into three primary elements: a linking volume connecting to the existing building, a linear teaching block for classrooms, and a larger sports block for the double-height halls, establishing a clear hierarchy.

The form is refined to better respond to the site. The linking element is reduced in width to reflect its circulation role, while the northern elevation is stepped to follow the site's narrowing geometry and improve its relationship with the surroundings.

Further adjustments optimise internal volumes. The sports hall height is increased only where necessary, and the classroom block is set back to create a defined, covered entrance.

Finally, the roofscape is articulated with sawtooth forms over the sports facilities, reinforcing the hierarchy, adding rhythm, and improving natural daylight.

Public Consultation | Materiality and References

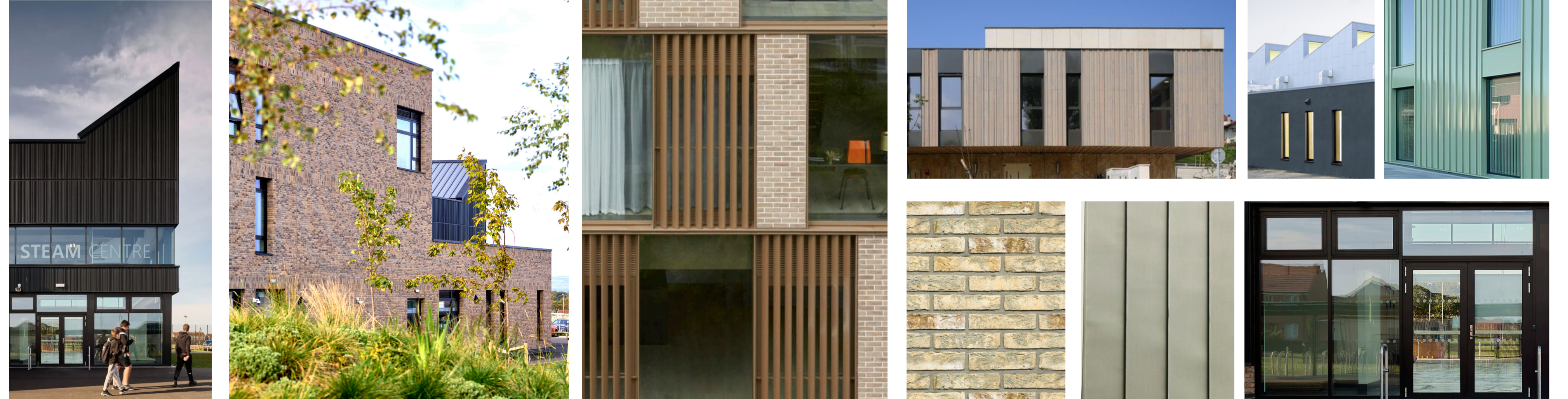
The elevational strategy responds to the scale and character of the adjacent school building while clearly expressing the different functions contained within the extension. A restrained palette of materials and colours is used to ensure the extension integrates comfortably within the campus without giving it excessive visual prominence.

Two complementary metal cladding profiles are used to break down the length of the elevations and introduce a consistent vertical rhythm. The primary cladding defines the main building volumes, while a secondary vertical profile frames the window openings, providing depth, shadow and strong vertical articulation that reflects the regular internal layout of the teaching spaces.

The larger volume containing the double-height games hall is expressed through a sawtooth roof form, which is fully clad in metal and finished in a contrasting tone to distinguish it from the adjacent teaching block. This approach reinforces the hierarchy of the building volumes while introducing variation to the roofscape and allowing improved levels of natural daylight within the internal spaces. A facing brick base course is proposed at ground level, creating a robust plinth that visually anchors the building and relates to the masonry materials found elsewhere across the school campus.



PROPOSED ELEVATIONAL TREATMENT



EXTERNAL REFERENCE IMAGES



PROPOSED COLLABORATION SPACE



PROPOSED BREAKOUT / FITNESS SUITE



PROPOSED CLASSROOM BREAKOUT



PROPOSED SPORTS HALL



PROPOSED ASSEMBLY HALL

The proposed extension at Craigmount High School is being designed to support a modern, flexible approach to learning and teaching. The intention is to create spaces that can be easily adapted, with movable and reconfigurable furniture allowing for a variety of activities.

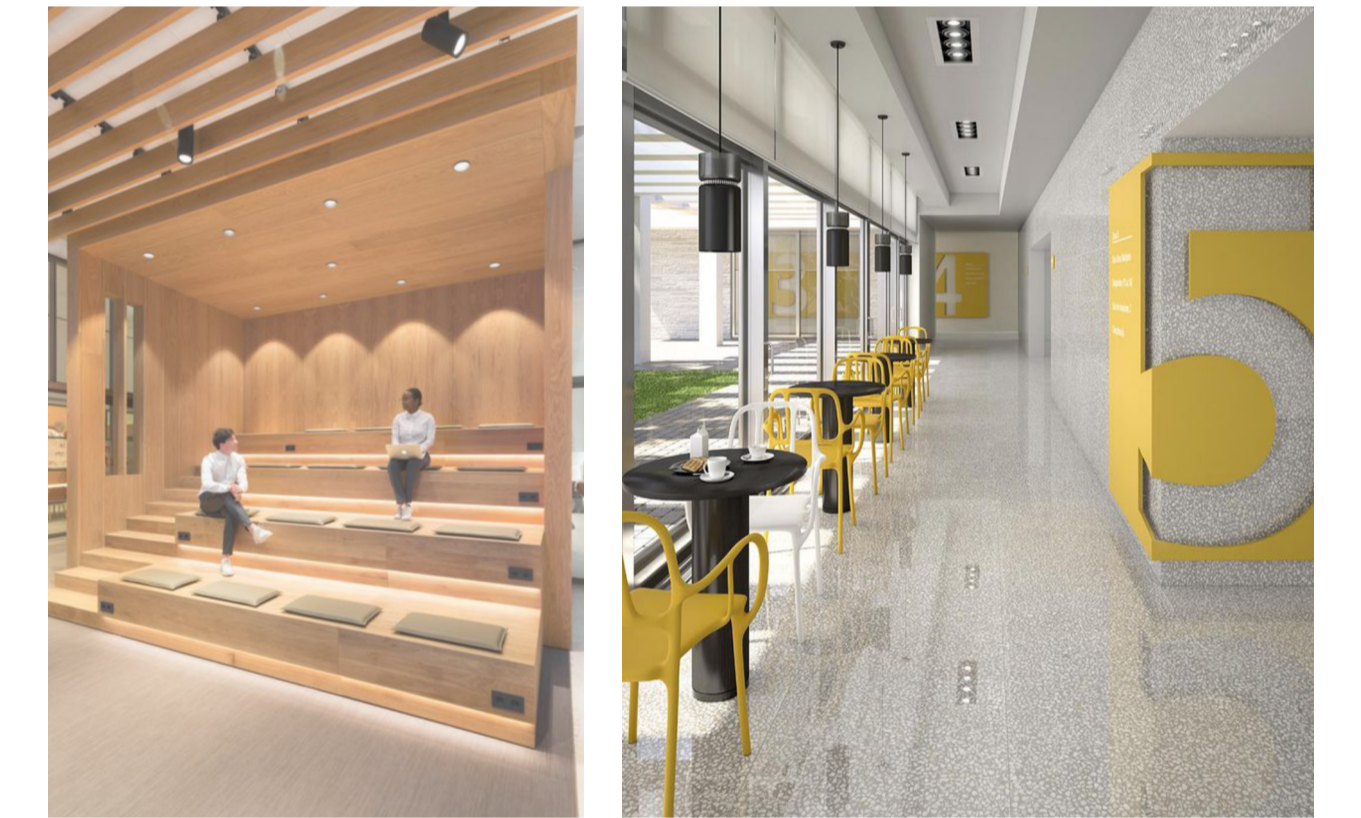
The proposal seeks to encourage movement and activity throughout the building, with clear and intuitive routes connecting different areas. Wherever possible, access to natural daylight is being prioritised to help create bright, uplifting interiors that support wellbeing and concentration.

A key aim of the design is to create an environment that feels open, inclusive, and welcoming to all users. In addition to supporting pupils and staff, the spaces are being considered for potential community use, helping the school to act as a valuable local resource.

The proposed material palette focuses on durable, low-maintenance finishes suitable for a school environment. A largely neutral base is being considered, with colour introduced in a more targeted way to support wayfinding and to help give identity to different areas, such as teaching clusters and PE spaces.

The design proposals include a range of breakout spaces intended to support informal learning, collaboration, and quieter study. These may include built-in bench seating and window seats, offering flexible areas for small groups or individual use.

The proposal aims to maintain visual connections between spaces wherever possible, helping the building feel open, connected, and easy to navigate. This approach is intended to support a sense of community within the school while also allowing for good levels of visibility and passive supervision.



INTERIORS REFERENCE IMAGES