

AECOM

PROJECT

Cycle and walking improvements at Roseburn Park

CLIENT

THE CITY OF EDINBURGH COUNCIL

CONSULTANT

AECOM
1 Tanfield
EDINBURGH, EH3 5DA
+44 (0) 131 301 8600 tel
+44 (0) 131 301 8699 fax
www.aecom.com

Key

KEY

— Quietroute Network - Existing

KEY PLAN

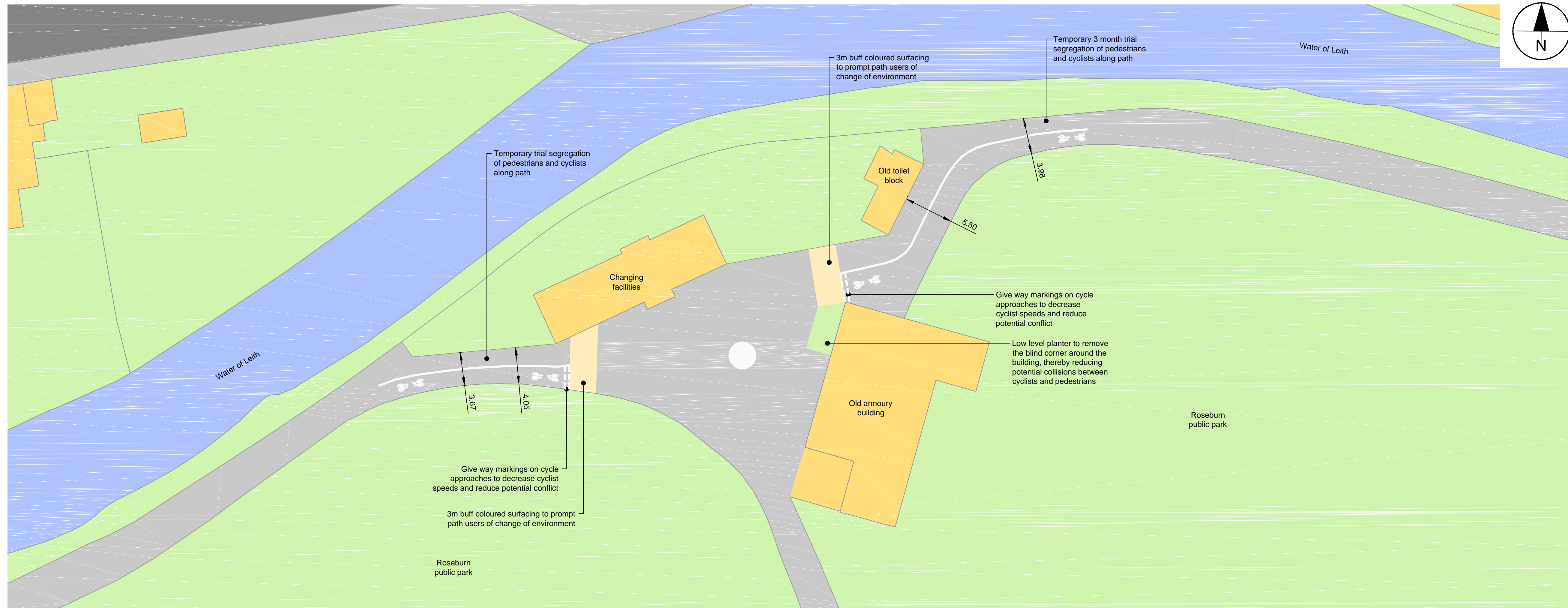
SHEET TITLE

11.6 ROSEBURN PARK
PUBLIC CONSULTATION
LOCATION PLAN

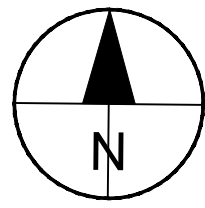
SHEET NUMBER

60512201-SKE-C-WP2-11.6-0100

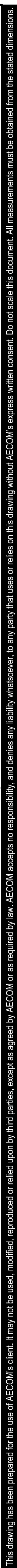
This drawing has been prepared for the use of AECOM's client. It may not be used, modified, reproduced or relied upon by third parties, except as agreed by law. AECOM accepts no responsibility, and denies any liability, whatsoever, to any party that uses or relies on this drawing without AECOM's express written consent. Do not scale this document. All measurements must be obtained from the stated dimensions.



Proposed Layout



60512201-SKE-C-WP2-11.6-0101



Proposed Layout



SHEET TITLE

SHEET NUMBER
60512201-SKE-C-WP2-11.6-0102