

Contents

Education Contribution Zones:

Boroughmuir/James Gillespie's
Castlebrae
Craigroyston/Broughton
North East
Firrhill
Liberton/Gracemount
Portobello
Queensferry
South West
Tynecastle
West Edinburgh

Notes on costs:

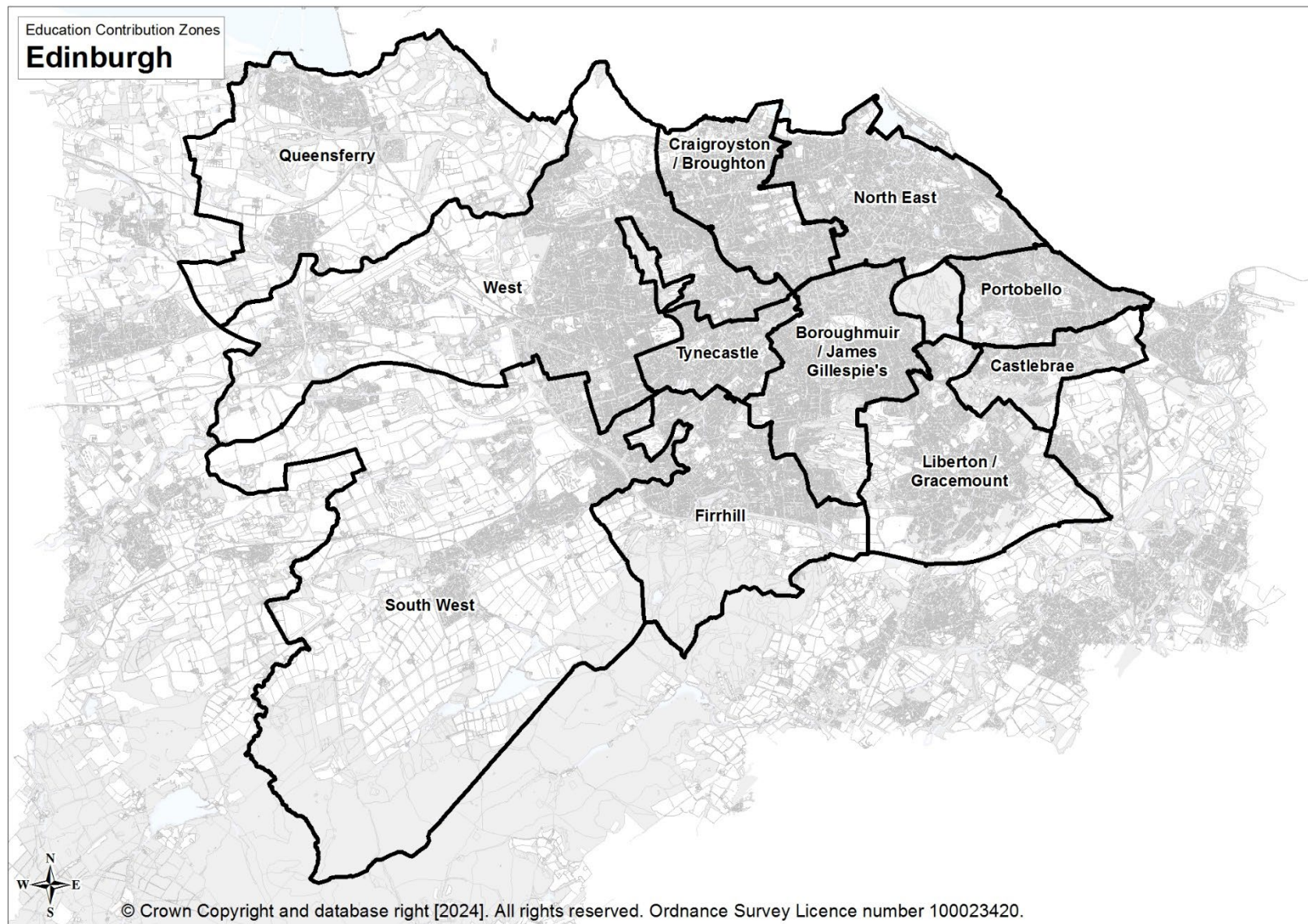
The costs for new primary schools and extensions are based on average costs for new schools at Maybury (West Contribution Zone) and Newcraighall (Castlebrae Contribution Zone). Where new schools have already been delivered (Canaan Lane Primary School including Deanbank House refurbishment, Frogston Primary School and Victoria Primary School) the costs are based on final accounts.

Where additional Early Learning and Childcare (ELC) places are required and form part of a new primary school (or annexe) the costs for additional ELC places will be included in the primary school per-unit rates.

Land values will be added to each action, as appropriate once the District Valuers' report is available. There are servicing costs from Q4 2017 and Q4 2022 from various current delivery projects.

The costs and other content regarding delivery funding are based on the latest information available and indicates the likely costs to fund the delivery of infrastructure. These costs may be amended in the future if new information is available through updates in the published Action Programme and subsequent Delivery Programmes, as stated in paragraph 3.196 of City Plan 2030.

Proportionate costs are calculated using allocated sites. Other proposals coming forward for development would be required to meet the terms of City Plan Policy Inf3 Infrastructure and Developer Contributions, and likely costs will be established using the same methodology.



Boroughmuir / James Gillespie's Education Contribution Zone

Sub zone	Actions	£ (Q4, 2022)
BJ-1, BJ-2	New 64 place Early Learning and Childcare setting	£3,165,500
BJ-2	Contribution towards new 14-class primary school (Canaan Lane Primary School)	£10,557,030
BJ-1, BJ-2	Additional secondary school places – 170 places	£11,720,140
	TOTAL Boroughmuir / James Gillespie's	£25,442,670

Sub zone	Housing Output Assumptions		Per unit rates			
	Type	Housing Output	ELC	Primary	Secondary	Full
BJ-1	Flats > 1bed	482	£1,550	£0	£4,964	£6,514
	Houses	24	£3,258	£0	£17,443	£20,701
BJ-2	Flats > 1bed	1,031	£1,550	£6,373	£4,964	£12,887
	Houses	228	£3,258	£17,485	£17,443	£38,186

Note: allocated sites and proposals consistent with the housing output assumptions in the tables below will be assessed in line with per-unit rates in this guidance, subject to any update reported in the Delivery Programme. Contributions may be likely to change if proposed applications differ from the housing output assumptions that informed the per unit rates set out in the guidance.

The impact of unallocated sites has not been assessed and will be assessed at the point of application.

The per unit rates have been informed by the following housing output assumptions:

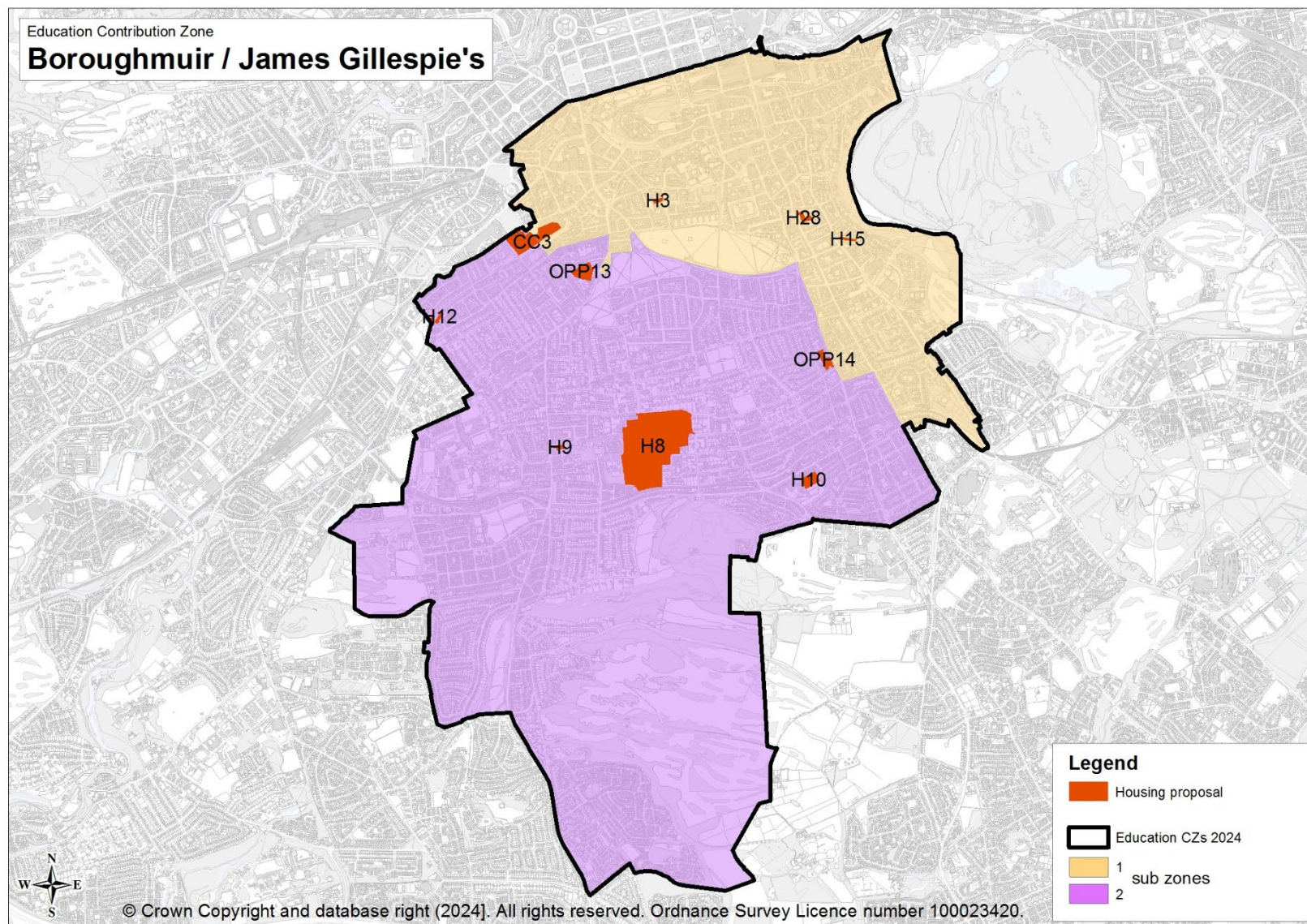
Note: sites not estimated to generate at least one primary school pupil are not listed.

BJ-1 affecting Preston Street Primary School, Royal Mile Primary School and Tollcross Primary School and their feeder secondary schools and associated denominational schools.						
Ref	Site	Capacity	Houses	Flats	1bed	Flats > 1bed
5860	Upper Gray Street	3	3	0	0	0
6631	Cowan's Close	19	0	19	12	7
H15	St Leonard's Street	24	0	24	7	17
H28	Cowan's Close	36	0	36	11	25
22/04766/FUL	Dalkeith Road	174	0	174	29	145
3825	LPD CC2: New Street	167	10	157	47	110

City Plan 2030: Supplementary Guidance on Developer Contributions and Infrastructure Delivery Draft for Consultation June 2024

6177	Dumbiedykes Road	11	0	11	0	11
6350	Jeffrey Street	31	0	31	17	14
4900.2	LDP CC3: Fountainbridge (Vastint)	234	11	223	118	105
H3	Chalmers Street (Eye Pavillon)	68	0	68	20	48
	TOTAL	767	24	743	261	482

BJ-2 affecting Bruntsfield Primary School, Buckstone Primary School, Canaan Lane Primary School, James Gillespie's Primary School, Sciennes Primary School and South Morningside Primary School and their feeder secondary schools and associated denominational schools.						
Ref	Site	Capacity	Houses	Flats	1bed	Flats > 1bed
4900.1	LDP CC3: Fountainbridge	340	0	340	153	187
6160	Viewforth	104	0	104	27	77
6398	St Peter's Place	14	4	10	5	5
6566	Temple Park Crescent	46	0	46	21	25
OPP13	Gillespie Crescent	166	20	146	37	109
5423	Craighouse Road	145	43	102	8	94
6080	Canaan Lane	10	0	10	1	9
6481	Morningside Road	10	0	10	0	10
6625	Watertoun Road	49	23	26	12	14
6331	Falcon Road West	11	0	11	0	11
6429	Hope Terrace	3	3	0	0	0
H8	Astley Ainslie Hospital	500	100	400	100	300
6320	Craigmillar Park	48	27	21	6	15
6382	Sciennes Road	126	8	118	25	93
OPP14	Ratcliffe Terrace	97	0	97	29	68
6211	Braid Road	7	0	7	0	7
6365	Morningside Drive	7	0	7	0	7
	TOTAL	1,683	228	1,455	424	1,031



Castlebrae Education Contribution Zone

Sub zone	Actions	£ (Q4, 2022)
C-1	New 14-class primary school (Greendykes)	£23,967,312
C-2	New 21-class primary school (Brunstane)	£34,602,617
C-1, C-2	3 PS Classes + Dining Hall (St Francis' RC Primary School)	£4,644,000
C-1 (11%)	4 PS Classes (St John Vianney RC Primary School)	£415,696
C-1, C-2	Additional secondary school capacity – 687 places	£47,363,154
	TOTAL Castlebrae	£110,992,779

Sub zone	Housing Output Assumptions		Per unit rates			
	Type	Housing Output	ELC	Primary	Secondary	Full
C-1	Flats > 1bed	860	£0	£6,464	£4,964	£11,428
	Houses	1,038	£0	£17,735	£17,443	£35,178
C-2	Flats > 1bed	353	£0	£8,193	£4,964	£13,157
	Houses	1,890	£0	£22,478	£17,443	£39,321

Note: allocated sites and proposals consistent with the housing output assumptions in the tables below will be assessed in line with per-unit rates in this guidance, subject to any update reported in the Delivery Programme. Contributions may be likely to change if proposed applications differ from the housing output assumptions that informed the per unit rates set out in the guidance.

The impact of unallocated sites has not been assessed and will be assessed at the point of application.

The per unit rates have been informed by the following housing output assumptions:

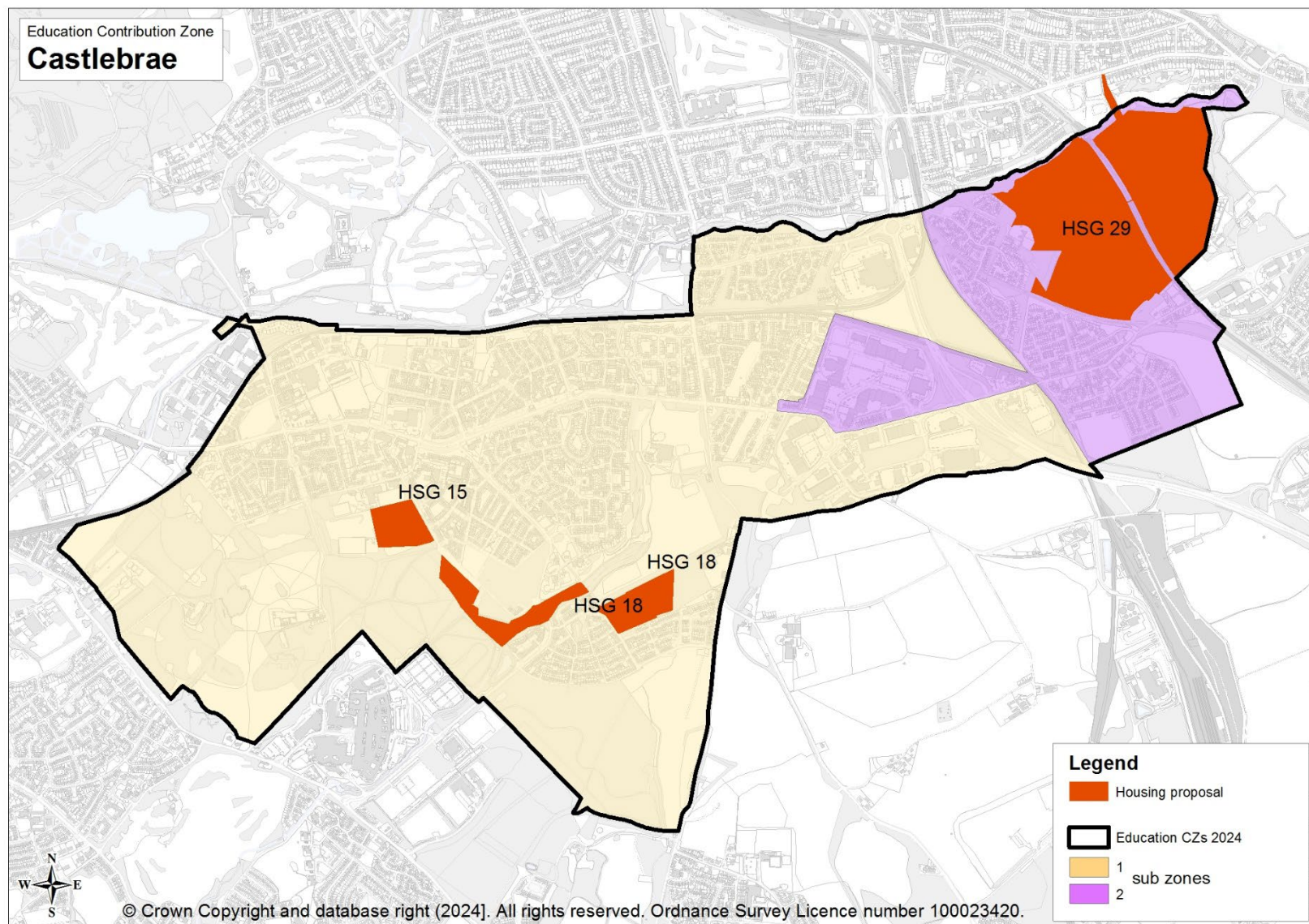
Note: sites not estimated to generate at least one primary school pupil are not listed.

C-1 affecting Castlevie Primary School, Niddrie Mill Primary School and their feeder secondary schools and associated denominational schools.						
Ref	Site	Capacity	Houses	Flats	1 bed	Flats > 1 bed
3753.4	LDP HSG 18: New Greendykes Areas G & AH3	165	87	78	2	76
3753.5	LDP HSG 18: New Greendykes Areas C & D	145	115	30	14	16
3753.7	LDP HSG 18: New Greendykes Areas H/AH1	130	106	24	2	22
3754.4	LDP HSG 17: Greendykes Road (areas D and J)	158	123	35	0	35

City Plan 2030: Supplementary Guidance on Developer Contributions and Infrastructure Delivery Draft for Consultation June 2024

3754.5	LDP HSG 17: Greendykes Road (area G)	75	13	62	27	35
3754.6	LDP HSG 17: Greendykes Road (areas N,Q,P,R)	169	111	58	2	56
3754.7	LDP HSG 17: Greendykes (areas K and L)	140	28	112	56	56
3755	LDP HSG 16: Thistle Foundation Phase 3	149	45	104	31	73
4157	LDP HSG 15: Castlebrae	145	109	36	5	31
6276	Niddrie Mains Road	136	0	136	41	95
3753.6	LDP HSG 18: New Greendykes Areas A,B	165	114	51	5	46
3756.8	LDP HSG 14: Niddrie Mains Road	149	79	70	8	62
3756.9	LDP HSG 14: Niddrie Mains	194	66	128	58	70
6022	The Wisp	139	0	139	0	139
6280	Duddingston Road West	125	0	125	85	40
6316	Corbieshot	54	42	12	4	8
	TOTAL	2,238	1,038	1,200	340	860

C-2 affecting Newcraighall Primary School and its feeder secondary schools and associated denominational schools.						
Ref	Site	Capacity	Houses	Flats	1 bed	Flats > 1 bed
5253	LDP HSG 26: Newcraighall North	220	194	26	0	26
5254	LDP HSG 27: Newcraighall East (East Part)	88	66	22	0	22
5254.1	LDP HSG 27: Newcraighall East phas 1-3	176	152	24	6	18
5254.2	LDP HSG 27: Newcraighall East Phase 4	37	37	0	0	0
5254.3	LDP HSG 27: Newcraighall East Phase 5	29	29	0	0	0
5711	LDP HSG 29: Brunstane	1330	997	333	53	280
6401	Whitehill Street	10	0	10	3	7
	TOTAL	1890	1475	415	62	353



Craigroyston / Broughton Education Contribution Zone

Sub zone	Actions	£ (Q4, 2022)
CB-1	New 21-class primary school (Granton Waterfront)	£32,966,870
CB-1 (31%)	2 PS Classes (Holy Cross RC Primary School)	£617,167
CB-1, CB-2	1 PS Class (St David’s RC Primary School)	£1,645,021
CB-4	Extension to Flora Stevenson (Annexe, ELC and PS places)	£10,225,000
CB-1, CB-2, CB-3, CB-4	Additional secondary school places – 537 places	£37,021,854
	TOTAL	£82,475,912

Sub zone	Housing Output Assumptions		Per unit rates			
	Type	Housing Output	ELC	Primary	Secondary	Full
CB-1	Flats > 1bed	4,177	£0	£7,171	£4,964	£12,135
	Houses	228	£0	£19,673	£17,443	£37,116
CB-2	Flats > 1bed	175	£0	£955	£4,964	£5,919
	Houses	239	£0	£2,619	£17,443	£20,062
CB-3	Flats > 1bed	191	£0	£0	£4,964	£4,964
	Houses	0	£0	£0	£17,443	£17,443
CB-4	Flats > 1bed	554	£0	£9,026	£4,964	£13,990
	Houses	211	£0	£24,763	£17,443	£42,206

Note: allocated sites and proposals consistent with the housing output assumptions in the tables below will be assessed in line with per-unit rates in this guidance, subject to any update reported in the Delivery Programme. Contributions may be likely to change if proposed applications differ from the housing output assumptions that informed the per unit rates set out in the guidance.

The impact of unallocated sites has not been assessed and will be assessed at the point of application.

The per unit rates have been informed by the following housing output assumptions:

Note: sites not estimated to generate at least one primary school pupil are not listed.

CB-1 affecting Forthview Primary School, Granton Primary School, Pirniehall Primary School and their feeder secondary school(s) and associated denominational school(s).

City Plan 2030: Supplementary Guidance on Developer Contributions and Infrastructure Delivery Draft for Consultation June 2024

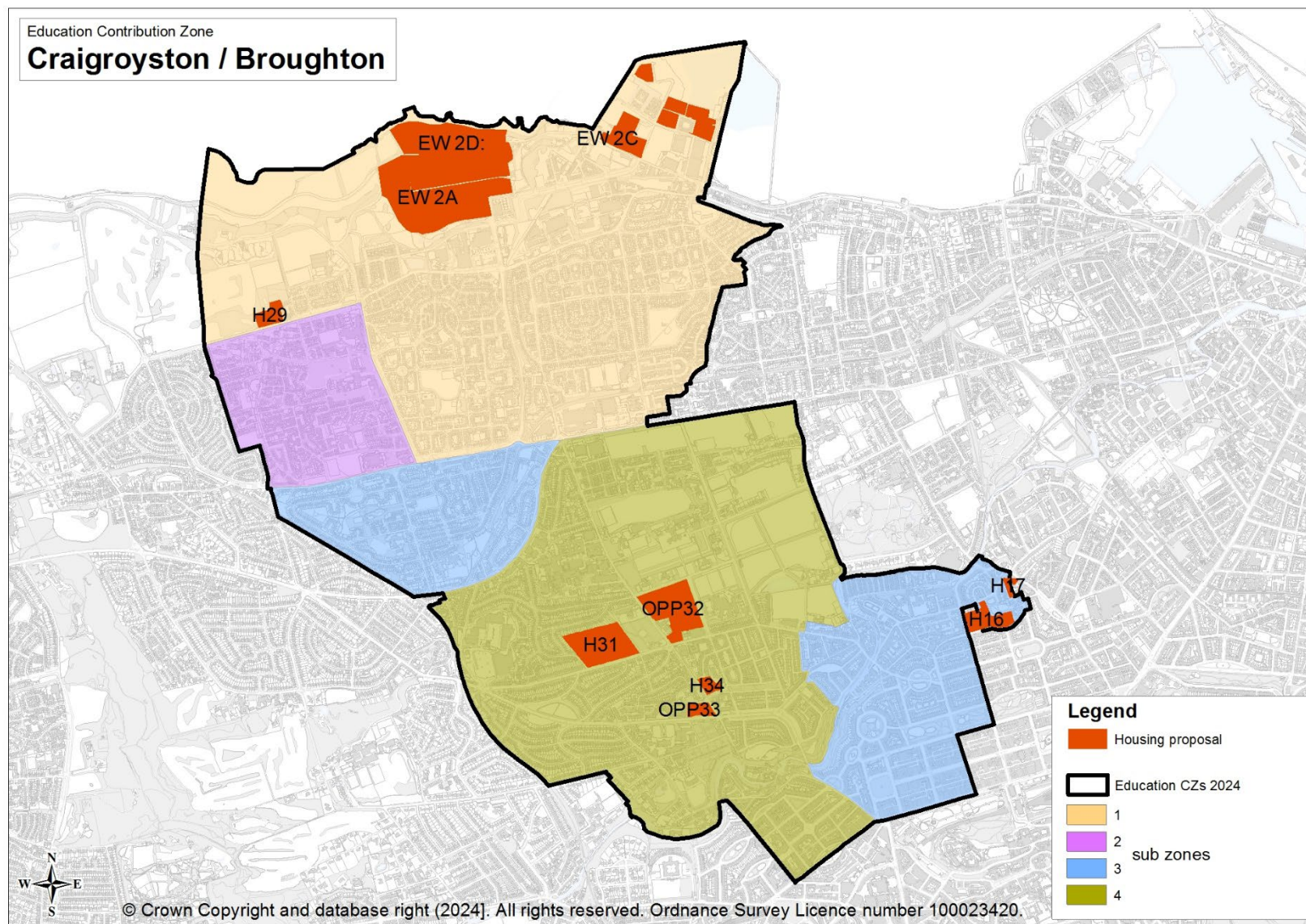
Ref	Site	Capacity	Houses	Flats	1 bed	Flats > 1 bed
3733A	LDP EW 2B: Waterfront WEL - Central Dev Area	1188	0	1188	297	891
3733A.5	LDP EW 2B: Upper Strand Phs 3	89	0	89	24	65
3733A.7	LDP EW 2B: Upper Strand: Phase 2	100	33	67	7	60
3744A.10	LDP EW 2C: Granton Harbour	171	18	153	47	106
3744A.11	LDP EW 2C: Granton Harbour	98	0	98	10	88
3744A.2	LDP EW 2C: Granton Harbour	288	0	288	43	245
3744A.3	LDP EW 2C: Granton Harbour - Plot 3	104	0	104	36	68
3744A.4	LDP EW 2C: Granton Harbour - Plot 31	97	0	97	24	73
3744A.6	LDP EW 2C: Granton Harbour - Plot 29	108	0	108	19	89
3744A.7	LDP EW 2C: Granton Harbour Plots 26 and 27	264	0	264	12	252
3744A.8	LDP EW 2C: Granton Harbour Plots S1 and S2	302	0	302	118	184
3744A.9	LDP EW 2C: Granton Harbour Plots 9a/9b	104	0	104	14	90
3744B	LDP EW 2C: Granton Harbour	347	27	320	80	240
6630	Muirhouse Parkway	142	0	142	39	103
3105A	LDP EW 2A: West Shore Road - Forth Quarter	444	0	444	79	365
3105B	LDP EW 2A: West Shore Road - Forth Quarter	1027	150	877	219	658
3733A.8	LDP EW 2B: Waterfront - Waterfront Avenue	75	0	75	30	45
3733B	LDP EW 2D: Waterfront - WEL - North Shore	740	0	740	185	555
	TOTAL	5688	228	5460	1283	4177

CB-2 affecting Craigoyston Primary School and its feeder secondary school and associated denominational schools.						
Ref	Site	Capacity	Houses	Flats	1 bed	Flats > 1 bed
4996.4	Pennywell Road	99	99	0	0	0
5159.2	Pennywell Road	136	0	136	84	52
5159.3	Pennywell Road	315	140	175	52	123
	TOTAL	550	239	311	136	175

City Plan 2030: Supplementary Guidance on Developer Contributions and Infrastructure Delivery Draft for Consultation June 2024

CB-3 affecting Ferryhill Primary School, Stockbridge Primary School and their feeder secondary school(s) and associated denominational school(s).						
Ref	Site	Capacity	Houses	Flats	1 bed	Flats > 1 bed
6486	Telford Drive	11	0	11	4	7
6404 (H16)	Fettes Row	261	0	261	114	147
6570	Henderson Place Lane	42	0	42	5	37
	TOTAL	314	0	314	123	191

CB-4 affecting Flora Stevenson Primary School and its feeder secondary school and associated denominational schools.						
Ref	Site	Capacity	Houses	Flats	1 bed	Flats > 1 bed
5011	Shandwick Place	11	0	11	2	9
5888	Belford Road	50	0	50	5	45
H31	Royal Victoria Hospital	360	112	248	50	198
OPP32	Crewe Road South	320	99	221	44	177
OPP33	Orchard Brae Avenue	55	0	55	17	38
H34	Orchard Brae	124	0	124	37	87
	TOTAL	920	211	709	155	554



Firrhill Education Contribution Zone

Sub zone	Actions	£ (Q4, 2022)
F-1, F-2	New 64 place ELC setting	£3,165,500
F-2	5 PS Classes, 1 GP Class, Assembly, Dining and Kitchen (Colinton Primary School)	£8,829,168
F-1, F-2	Additional secondary school places – Annexe to Firrhill High School	£8,100,685
	TOTAL	£20,095,353

Sub zone	Housing Output Assumptions		Per unit rates			
	Type	Housing Output	ELC	Primary	Secondary	Full
F-1	Flats > 1bed	269	£2,760	£0	£4,964	£8,541
	Houses	20	£5,799	£0	£17,443	£26,110
F-2	Flats > 1bed	500	£2,760	£9,403	£4,964	£17,944
	Houses	180	£5,799	£25,798	£17,443	£51,908

Note: allocated sites and proposals consistent with the housing output assumptions in the tables below will be assessed in line with per-unit rates in this guidance, subject to any update reported in the Delivery Programme. Contributions may be likely to change if proposed applications differ from the housing output assumptions that informed the per unit rates set out in the guidance.

The impact of unallocated sites has not been assessed and will be assessed at the point of application.

The per unit rates have been informed by the following housing output assumptions:

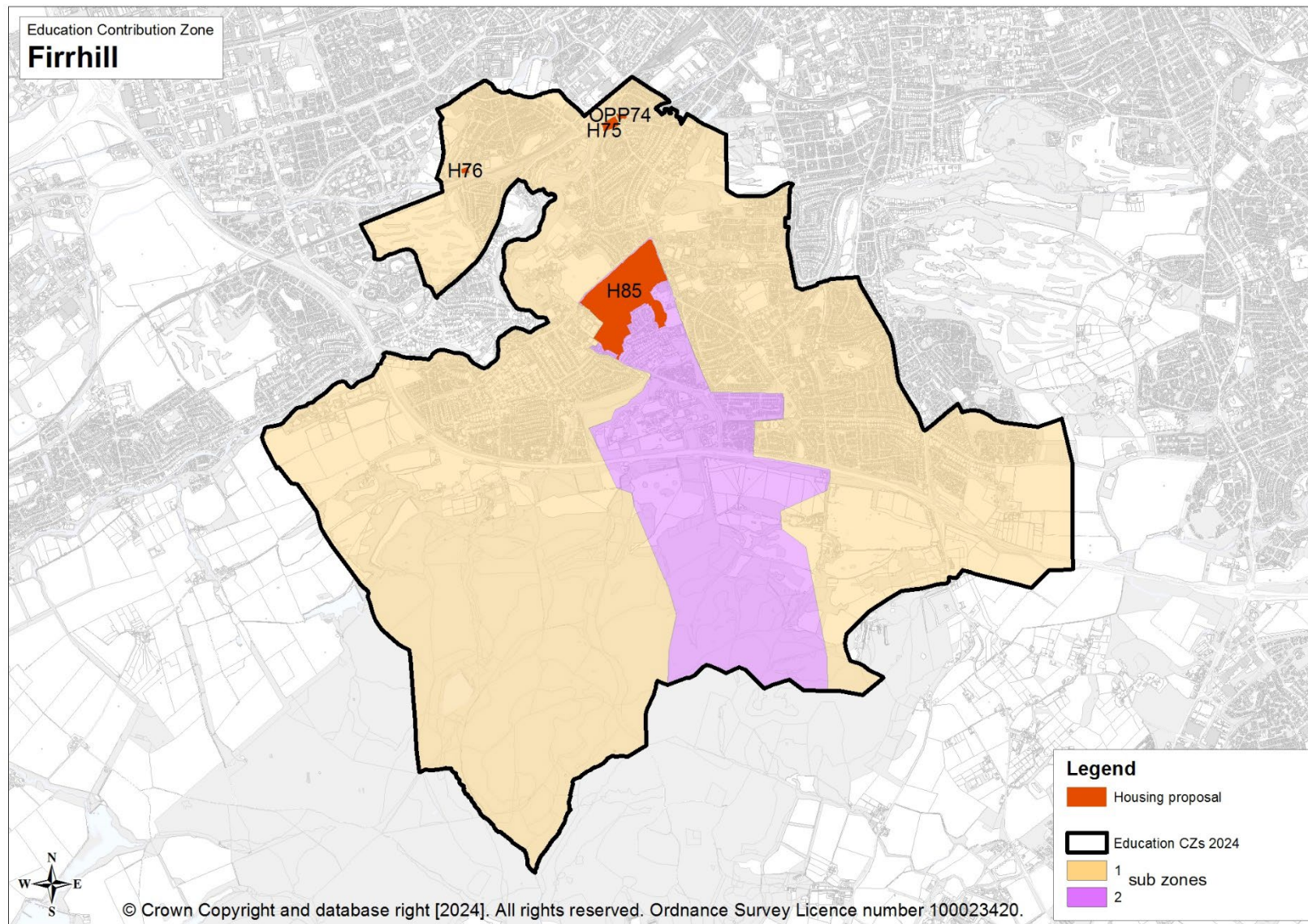
Note: sites not estimated to generate at least one primary school pupil are not listed.

F-1 affecting Bonaly Primary School, Longstone Primary School, Oxgangs Primary School, Pentland Primary School and their feeder secondary school and associated denominational schools.						
Ref	Site	Capacity	Houses	Flats	1 bed	Flats > 1 bed
6313	Clovenstone Gardens	69	0	69	20	49
6559	Kingsknowe Road North	10	10	0	0	0
6285	Lanark Road	57	0	57	26	31
6514	Lanark Road	25	0	25	5	20
6520	Redhall House Drive	8	2	6	0	6

City Plan 2030: Supplementary Guidance on Developer Contributions and Infrastructure Delivery Draft for Consultation June 2024

OPP74	Craiglockhart Avenue	24	0	24	7	17
H75	Lanark Road (D)	80	0	80	24	56
6184	Oxgangs Green	85	6	79	9	70
6416	Oxgangs Path	11	2	9	0	9
6616	Oxgangs Path	11	0	11	0	11
	TOTAL	380	20	360	91	269

F-1 affecting Colinton Primary School and its feeder secondary school and associated denominational schools.						
Ref	Site	Capacity	Houses	Flats	1 bed	Flats > 1 bed
H85	Redford Barracks TOTAL	800	160	640	140	500
	TOTAL	380	20	360	91	269



Liberton / Gracemount Education Contribution Zone

Sub zone	Actions	£ (Q4, 2022)
LG-1	New 15-class primary school (Frogston Primary School)	£21,855,938
LG-1	6 PS Classes and 1 GP Class (Frogston Primary School)	£7,253,928
LG-1	New 14-class primary school (Gilmerton Station Road)	£29,088,905
LG-1 (76%)	5 PS Classes and 1 GP Class (St Catherine’s RC Primary School)	£4,766,427
LG-1 (25%, LG-2 (64%))	4 PS Classes (St John Vianney RC Primary School)	£3,448,112
LG-2	New 14-class primary school (Bioquarter / Edmonstone)	£23,967,312
LG-1, LG-2, LG-3	Additional secondary school places – 789 places	£54,395,238
	TOTAL	£144,775,860

Sub zone	Housing Output Assumptions		Per unit rates			
	Type	Housing Output	ELC	Primary	Secondary	Full
LG-1	Flats > 1bed	524	£0	£8,695	£4,964	£13,659
	Houses	2,489	£0	£23,855	£17,443	£41,298
LG-2	Flats > 1bed	2,342	£0	£7,407	£4,964	£12,371
	Houses	448	£0	£20,322	£17,443	£37,765
LG-3	Flats > 1bed	37	£0	£0	£4,964	£4,964
	Houses	0	£0	£0	£17,443	£17,443

Note: allocated sites and proposals consistent with the housing output assumptions in the tables below will be assessed in line with per-unit rates in this guidance, subject to any update reported in the Delivery Programme. Contributions may be likely to change if proposed applications differ from the housing output assumptions that informed the per unit rates set out in the guidance.

The impact of unallocated sites has not been assessed and will be assessed at the point of application.

The per unit rates have been informed by the following housing output assumptions:

Note: sites not estimated to generate at least one primary school pupil are not listed.

City Plan 2030: Supplementary Guidance on Developer Contributions and Infrastructure Delivery Draft for Consultation June 2024

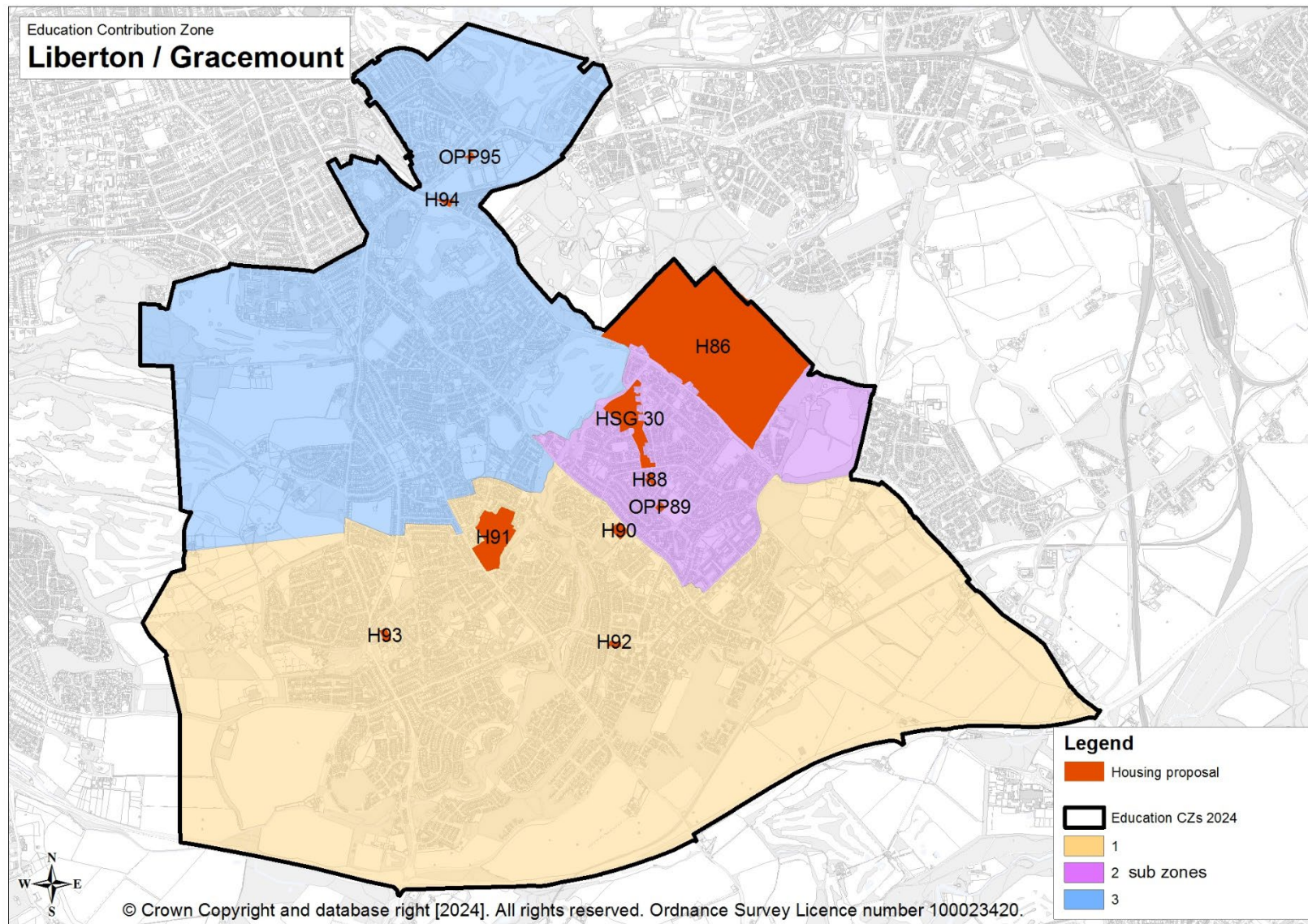
LG-1 affecting Frogston Primary School, Gilmerton Primary School and Gracemount Primary School and their feeder secondary school(s) and associated denominational schools.						
Ref	Site	Capacity	Houses	Flats	1 bed	Flats > 1 bed
5248	LDP HSG 21: Broomhills	633	560	73	0	73
5249	LDP HSG 22: Burdiehouse Road	210	145	65	12	53
6307	Burdiehouse Road	116	95	21	0	21
5251.1	LDP HSG 24: Gilmerton Station Road	199	152	47	7	40
5251.2	LDP HSG 24: Gilmerton Station Road	293	233	63	2	61
5251.3	LDP HSG 24: Gilmerton Station Road	315	270	45	0	45
5251.4	LDP HSG 24: Gilmerton Station Road	134	134	0	0	0
5252	LDP HSG 25: Candlemaker's Park	149	125	24	0	24
5717	LDP HSG 39: Lasswade Road	260	256	4	0	4
6178	Lasswade Road	335	299	36	12	24
H90	Morrisons at Gilmerton Road	32	0	32	10	22
H92	Gilmerton Dykes Street	24	0	24	7	17
5710	LDP HSG 28: Ellens Glen Road	240	180	60	8	52
6420	Lasswade Road	3	3	0	0	0
H91	Liberton Hospital	120	37	83	17	66
H93	Rae's Crescent	32	0	32	10	22
	TOTAL	3095	2489	609	85	524

LG-2 affecting Craigour Primary School and its feeder secondary school and associated denominational schools.						
Ref	Site	Capacity	Houses	Flats	1 bed	Flats > 1 bed
5257	LDP HSG 30: Moredunvale Road	200	50	150	30	120
5383	Old Dalkeith Road	63	63	0	0	0
5383.1	Old Dalkeith Road	47	31	16	16	0
5704.1	LDP HSG 40: SE Wedge South - Edmonstone (1)	370	80	290	42	248
5704.2	LDP HSG 40: SE Wedge South - Edmonstone (2)	192	123	69	0	69

City Plan 2030: Supplementary Guidance on Developer Contributions and Infrastructure Delivery Draft for Consultation June 2024

5704.3	LDP HSG 40: SE Wedge South - Edmonstone (3)	120	101	19	0	19
5704.4	LDP HSG 40: SE Wedge South - Edmonstone (4)	176	0	176	79	97
H86	Edinburgh Bioquarter	2500	0	2500	750	1750
H88	Moredun Park Loan	32	0	32	10	22
OPP89	Moredun Park View	24	0	24	7	17
	TOTAL	3724	448	3276	934	2342

LG-3 affecting Liberton Primary School, Prestonfield Primary School and their feeder secondary school and associated denominational schools.						
Ref	Site	Capacity	Houses	Flats	1 bed	Flats > 1 bed
H94	Old Dalkeith Road	24	0	24	7	17
6039	Prestonfield Avenue	9	0	9	0	9
OPP95	Peffermill Road	16	0	16	5	11
	TOTAL	3724	448	3276	934	2342



North East Education Contribution Zone

Sub zone	Actions	£ (Q4, 2022)
NE-1	New 14-class primary school (Bonnington area)	£23,967,312
NE-1	2 PS Classes (Broughton Primary School / new primary school capacity)	£1,978,344
NE-1	New 7-class primary school (Leith Primary School / new primary school capacity)	£13,968,816
NE-1 (18%), NE-2 (51%)	2 PS Classes (Holy Cross Primary School)	£1,361,177
NE-2	New 64-place ELC setting (Victoria Primary School's catchment area)	£3,165,500
NE-2	New 15-class primary school (Victoria Primary School)*	£11,540,842
NE-2	6 PS Classes and 1 GP Class (Victoria Primary School)	£7,253,928
NE-2	7 PS Classes, dining, kitchen (in Victoria Primary School's catchment area)	£8,829,168
NE-3	New 63-place ELC setting (Craigentenny's catchment area, Seafield)	£3,165,500
NE-3	5 PS Classes and 1 GP Class (Craigentenny Primary School)	£6,278,688
NE-1, NE-2, NE-3, NE-4	Additional secondary school places – 998 places	£68,804,116
	TOTAL	£150,313,391

* The original Victoria Primary School was a 7-class, 210 capacity school, proportionally pupil generation from new housing developments in Victoria Primary School's catchment area represent 52% of the replacement school's capacity. The remaining shortfall in primary school places in Victoria Primary School's catchment area is the equivalent of a 14-class primary school. The replacement school has an expansion plan to increase its capacity to 21 classes. Accordingly, it will be necessary to identify additional accommodation out-with the school site.

Sub zone	Housing Output Assumptions		Per unit rates			
	Type	Housing Output	ELC	Primary	Secondary	Full
NE-1	Flats > 1bed	4,666	£0	£6,612	£4,964	£11,576
	Houses	519	£0	£18,140	£17,443	£35,583
NE-2	Flats > 1bed	3,039	£888	£7,677	£4,964	£13,529
	Houses	252	£1,865	£21,062	£17,443	£40,370
NE-3	Flats > 1bed	329	£2,309	£3,716	£4,964	£10,989
	Houses	496	£4,852	£10,195	£17,443	£32,490
NE-4	Flats > 1bed	1,486	£0	£0	£4,964	£4,964
	Houses	135	£0	£0	£17,443	£17,443

City Plan 2030: Supplementary Guidance on Developer Contributions and Infrastructure Delivery Draft for Consultation June 2024

Note: allocated sites and proposals consistent with the housing output assumptions in the tables below will be assessed in line with per-unit rates in this guidance, subject to any update reported in the Delivery Programme. Contributions may be likely to change if proposed applications differ from the housing output assumptions that informed the per unit rates set out in the guidance.

The impact of unallocated sites has not been assessed and will be assessed at the point of application.

The per unit rates have been informed by the following housing output assumptions:

Note: sites not estimated to generate at least one primary school pupil are not listed.

NE-1 affecting Broughton Primary School, Leith Primary School, Trinity Primary School and their feeder secondary schools and associated denominational schools.						
Ref	Site	Capacity	Houses	Flats	1 bed	Flats > 1bed
4773	LDP HSG 11: Shrub Place	342	0	342	104	238
4793	St James Centre	150	0	150	77	73
4946	Gayfield Square	11	0	11	3	8
5727	Beaverbank Place	8	0	8	0	8
5732	Bonnington Road Lane	201	0	201	43	158
5882	Ashley Place	58	0	58	10	48
5983	Warriston Road	180	0	180	27	153
6029	Newhaven Road	52	0	52	10	42
6282	Bonnington Road Lane	464	0	464	224	240
6423	Broughton Road	27	0	27	17	10
6573	Logie Green Road	48	0	48	16	32
4773A	LDP HSG 11: Shrub Place - Tramway Wshop	43	0	43	11	32
6404B	Fettes Row	174	0	174	98	76
H17	Eyre Place	69	0	69	21	48
H19	Broughton Road (Powderhall)	262	31	231	58	173
OPP20	Broughton Market	41	0	41	12	29
OPP21	East London Street	41	0	41	12	29
OPP22	McDonald Road (B)	158	0	158	47	111

City Plan 2030: Supplementary Guidance on Developer Contributions and Infrastructure Delivery Draft for Consultation June 2024

OPP23	McDonald Place	152	18	134	33	101
OPP44	Newhaven Road (B)	90	0	90	27	63
H45	Newhaven Road (C)	145	17	128	32	96
OPP48	Stewartfield	207	25	182	46	136
OPP50	Bonnington Road	56	0	56	17	39
OPP51	Broughton Road	23	0	23	7	16
6629	Pilrig Street	9	0	9	1	8
4893	LDP EW 1B: Central Leith waterfront (East)	462	92	370	93	277
4894	LDP EW 1C: Leith Waterfront -Salamander Place	719	144	575	144	431
5984	Wellington Place	35	0	35	25	10
6011	Ocean Drive	57	0	57	33	24
6561	Constitution Street	39	0	39	26	13
6571	Maritime Street	22	0	22	11	11
4893B	LDP EW1B: CLW - Bath Road	212	0	212	28	184
4893C	LDP EW1B: CLW - Bath Road	95	0	95	3	92
4893D	LDP EW1B: CLW - Baltic Street	18	0	18	8	10
4894.1B	LDP EW 1C: Salamander Place Phase 1 and 2	163	0	163	43	120
4894.1C	LDP EW 1C: Salamander Place phase 3 and 4	199	0	199	85	114
4894.1D	LDP EW 1C: Salamander Place Phase 5	155	44	111	37	74
4894.1E	LDP EW 1C: Salamander Place Phase 6 and 7	151	0	151	32	119
OPP41	Jane Street	372	45	327	82	245
OPP46	Bangor Road (Swanfield Industrial Estate)	290	35	255	64	191
OPP49	Corunna Place	24	0	24	7	17
5370	West Bowling Green Street	97	0	97	15	82
6021	West Bowling Green Street	77	0	77	35	42
6191	South Fort Street	115	0	115	5	110
OPP37	Coburg Street	152	18	134	33	101
OPP38	Commercial Street	45	0	45	14	31

City Plan 2030: Supplementary Guidance on Developer Contributions and Infrastructure Delivery Draft for Consultation June 2024

H39	Pitt Street	98	0	98	28	70
OPP43	West Bowling Green Street	83	0	83	25	58
OPP47	South Fort Street	414	50	364	91	273
	TOTAL	7105	519	6586	1920	4666

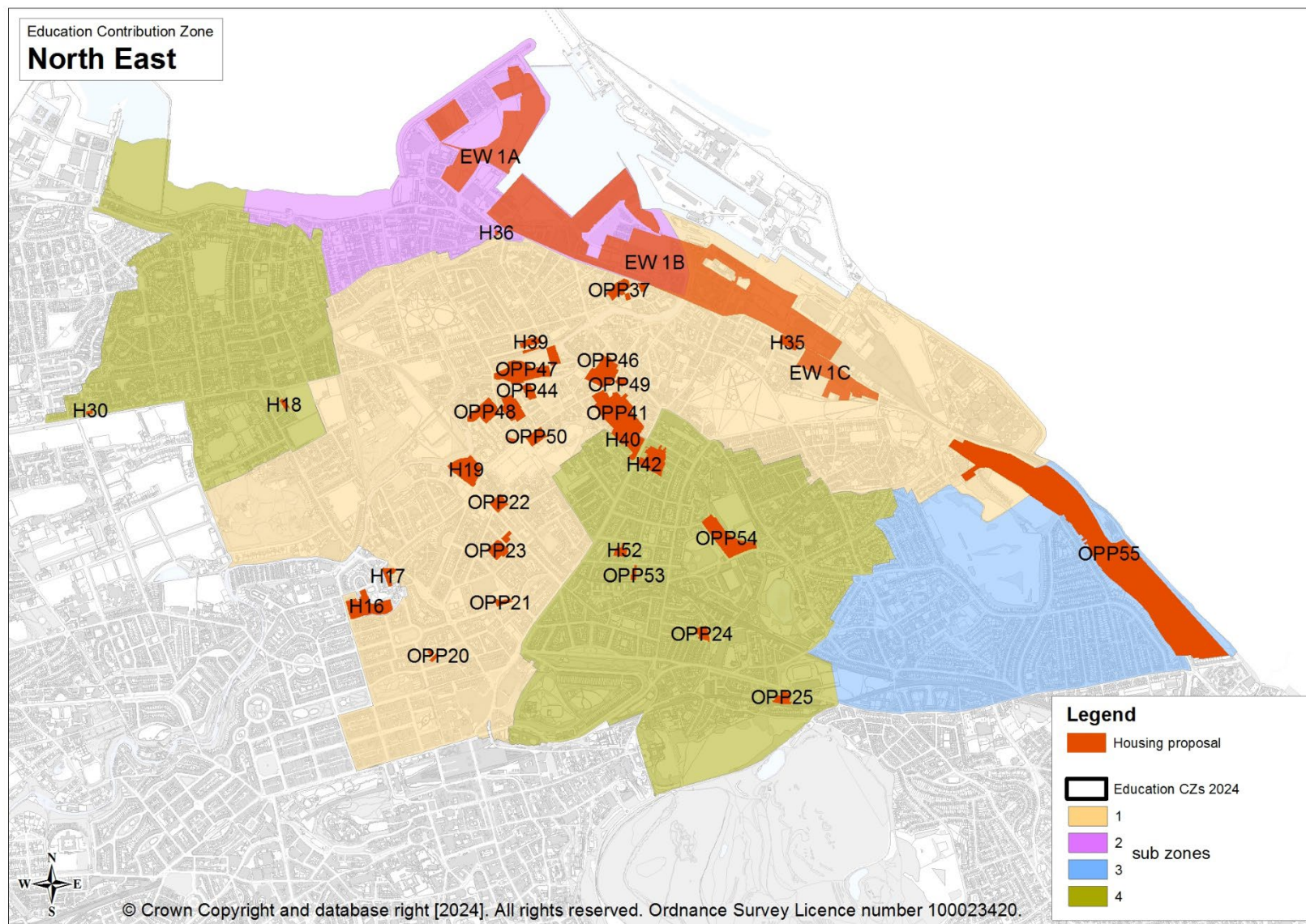
NE-2 affecting Victoria Primary School and its feeder secondary school and associated denominational schools.						
Ref	Site	Capacity	Houses	Flats	1 bed	Flats > 1 bed
3424	LDP EW 1A: Western Harbour	669	0	669	201	468
3424.1	LDP EW 1A: Western Harbour- Sandpiper Drive	40	0	40	0	40
3424.1	LDP EW 1A: Western Harbour - Platinum Point	452	0	452	0	452
3424.6	LDP EW 1A: Western Harbour View	258	11	247	36	211
3623	Ocean Drive	338	0	338	173	165
4893	LDP EW 1B: Central Leith waterfront	590	119	471	117	354
4893	LDP EW 1B: Central Leith waterfront	392	78	314	79	235
6159	Park Road	4	4	0	0	0
6527	Laverockbank Road	7	7	0	0	0
3424.11A	LDP EW 1A: Western Harbour	118	0	118	45	73
3424.11B	LDP EW 1A: Western Harbour	205	0	205	46	159
3424.11C	LDP EW 1A: Western Harbour	615	0	615	161	454
3424.11D	LDP EW 1A: Western Harbour	142	0	142	52	90
4893A	LDP EW1B: CLW - Ocean Drive	390	33	357	19	338
	TOTAL	4220	252	3968	929	3039

NE-3 affecting Craigentenny Primary School and its feeder secondary school and associated denominational schools.						
Ref	Site	Capacity	Houses	Flats	1 bed	Flats > 1 bed
5027	London Road	116	0	116	30	86
OPP55	Seafield*	800	496	304	61	243

City Plan 2030: Supplementary Guidance on Developer Contributions and Infrastructure Delivery Draft for Consultation June 2024

	TOTAL	916	496	420	91	329
* a new primary school to accommodate pupil generation from housing developments in Seafield if the housing output assumptions exceed and/or differ from what has been assessed.						

NE-4 affecting Abbeyhill Primary School, Hermitage Park Primary School, Leith Walk Primary School, Lorne Primary School, Wardie Primary School and their feeder secondary schools and associated denominational schools.						
Ref	Site	Capacity	Houses	Flats	1 bed	Flats > 1 bed
3965	LDP HSG 12: Albion Road	205	48	157	43	114
5544	Marionville Road	165	14	151	75	76
5719	Abbey Lane	139	0	139	19	120
6067	London Road	596	0	596	189	407
6403	Abbey Lane	66	0	66	12	54
6415	Leith Walk	152	0	152	63	89
6518	Iona Street	80	0	80	55	25
6648	Arthur Street	33	0	33	7	26
H18	Royston Terrace	28	0	28	8	20
OPP24	Norton Park	69	0	69	21	48
OPP25	London Road (B)	113	0	113	34	79
H30	Ferry Road	14	0	14	4	10
H42	Leith Walk /Halmyre Street	235	28	207	52	155
OPP53	Albert Street	28	0	28	8	20
OPP54	St Clair Street	373	45	328	82	246
	TOTAL	2296	135	2161	672	1489



Contribution Zone Portobello

Sub zone	Actions	£ (Q4, 2022)
P-2	4 PS Classes and 1 GP Class (The Royal High Primary School)	£4,839,048
P-1, P-2	Additional secondary school places – 63 places	£4,343,346
	TOTAL	£9,182,394

Sub zone	Housing Output Assumptions		Per unit rates			
	Type	Housing Output	ELC	Primary	Secondary	Full
P-1	Flats > 1bed	103	£0	£0	£4,964	£4,964
	Houses	3	£0	£0	£17,443	£17,443
P-2	Flats > 1bed	407	£0	£6,881	£4,964	£11,845
	Houses	108	£0	£18,878	£17,443	£36,321

Note: allocated sites and proposals consistent with the housing output assumptions in the tables below will be assessed in line with per-unit rates in this guidance, subject to any update reported in the Delivery Programme. Contributions may be likely to change if proposed applications differ from the housing output assumptions that informed the per unit rates set out in the guidance.

The impact of unallocated sites has not been assessed and will be assessed at the point of application.

The per unit rates have been informed by the following housing output assumptions:

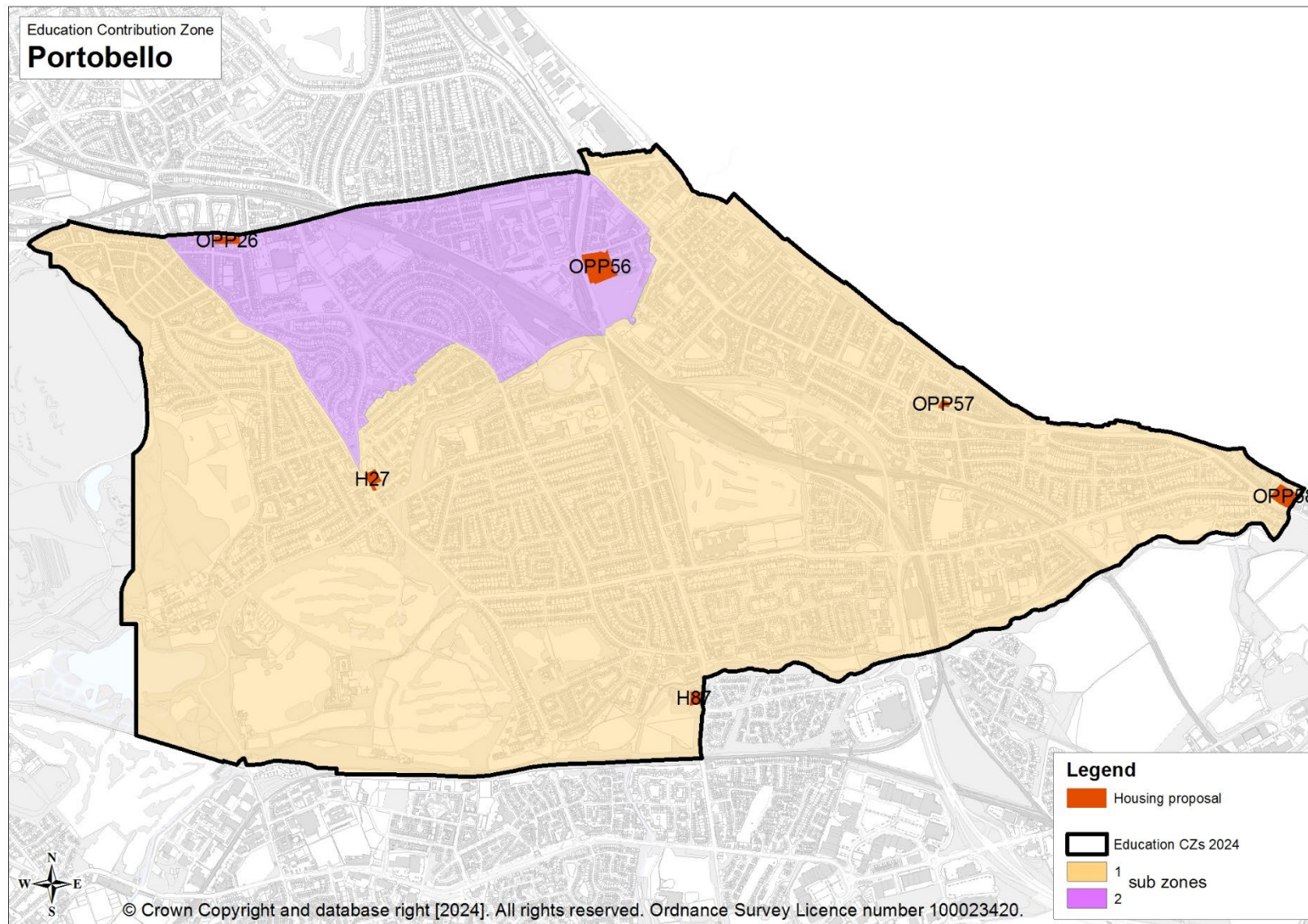
Note: sites not estimated to generate at least one primary school pupil are not listed.

P-1 Brunstane Primary School, Duddingston Primary School, Parsons Green Primary School, Towerbank Primary School and their feeder secondary school and associated denominational schools.						
Ref	Site	Capacity	Houses	Flats	1 bed	Flats > 1 bed
OPP58	Eastfield	40	0	40	12	28
H87	Duddingston Park South	24	0	24	7	17
6623	Willowbrae Road	48	0	48	17	31
H27	Willowbrae Road	24	0	24	7	17
3885	Argyle Crescent	3	3	0	0	0
6459	Pipe Lane	10	0	10	0	10

City Plan 2030: Supplementary Guidance on Developer Contributions and Infrastructure Delivery Draft for Consultation June 2024

	TOTAL	149	3	146	43	103
--	--------------	------------	----------	------------	-----------	------------

P-2 The Royal High Primary School and its feeder secondary school and associated denominational schools.						
Ref	Site	Capacity	Houses	Flats	1 bed	Flats > 1 bed
6025	Fishwives Causeway	435	76	359	39	320
OPP26	Portobello Road	41	0	41	12	29
OPP56	Sir Harry Lauder Road	104	32	72	14	58
	TOTAL	580	108	472	65	407



Contribution Zone Queensferry

Sub zone	Actions	£ (Q4, 2022)
Q-1	2 PS Classes and Dining Hall (Echline Primary School)*	£2,953,584
Q-1	3 PS Classes and Dining Hall (Queensferry Primary School)*	£3,668,760
Q-1	New 12-class primary school (Builyeon Road)*	£21,874,206
Q-2	2 PS Classes (Kirkliston Primary School, new annexe)	£1,978,344
Q-1, Q-2	Additional secondary school places – 295 places	£20,337,890
	TOTAL	£50,812,784

* It is now necessary to extend existing primary schools to accommodate pupils coming forward from housing sites in Echline Primary School and Queensferry Primary School catchment areas because of timings around the transfer and delivery of the new primary school site.

Sub zone	Housing Output Assumptions		Per unit rates			
	Type	Housing Output	ELC	Primary	Secondary	Full
Q-1	Flats > 1bed	749	£0	£8,840	£4,964	£13,804
	Houses	902	£0	£24,253	£17,443	£41,696
Q-2	Flats > 1bed	8	£0	£5,773	£4,964	£10,737
	Houses	122	£0	£15,838	£17,443	£33,281

Note: allocated sites and proposals consistent with the housing output assumptions in the tables below will be assessed in line with per-unit rates in this guidance, subject to any update reported in the Delivery Programme. Contributions may be likely to change if proposed applications differ from the housing output assumptions that informed the per unit rates set out in the guidance.

The impact of unallocated sites has not been assessed and will be assessed at the point of application.

The per unit rates have been informed by the following housing output assumptions:

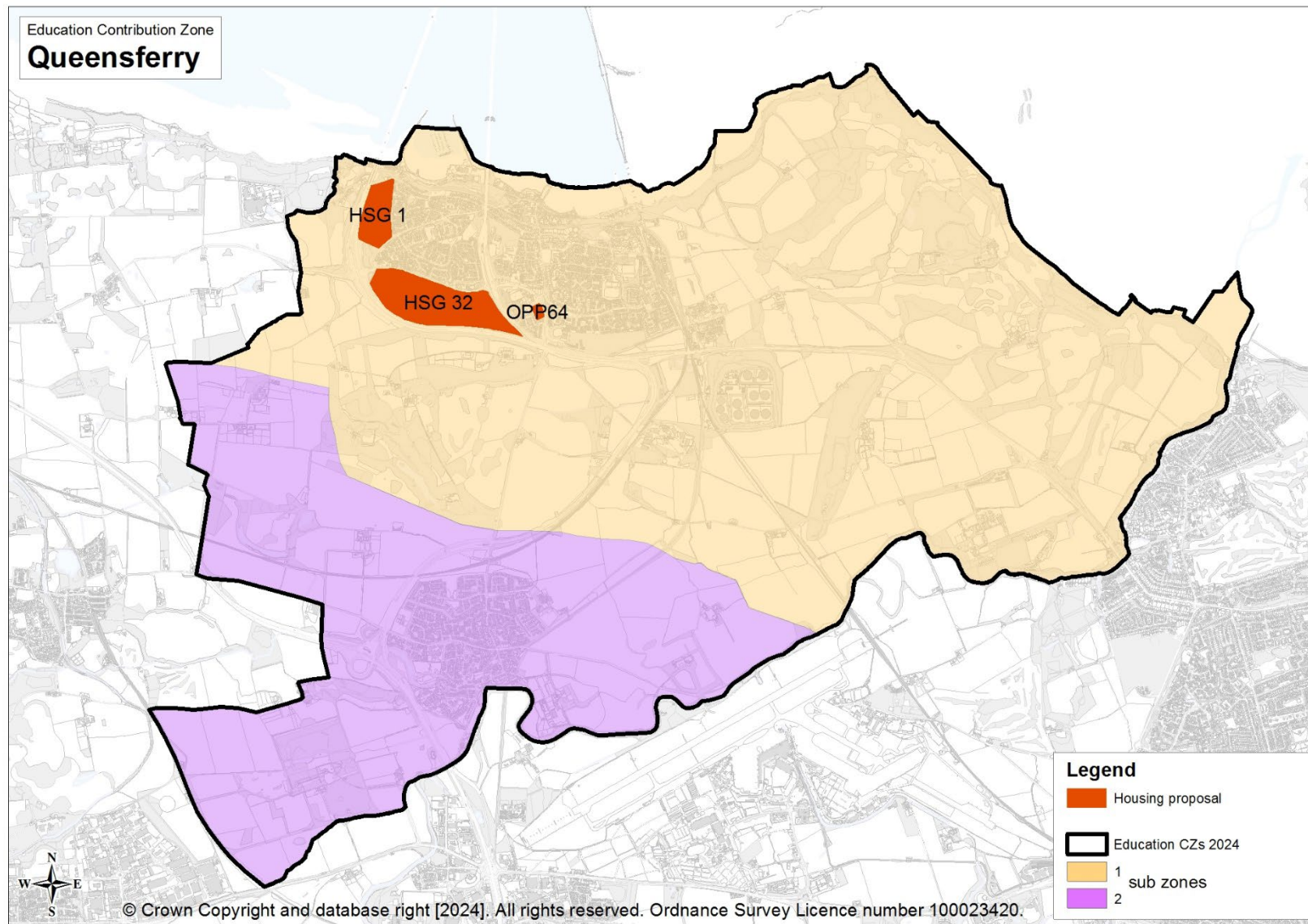
Note: sites not estimated to generate at least one primary school pupil are not listed.

Q-1 Dalmeny Primary School, Echline Primary School, Queensferry Primary School and their feeder secondary school and associated denominational schools.						
Ref	Site	Capacity	Houses	Flats	1 bed	Flats > 1 bed
5714	LDP HSG 34: Dalmeny	15	15	0	0	0

City Plan 2030: Supplementary Guidance on Developer Contributions and Infrastructure Delivery Draft for Consultation June 2024

3760	LDP HSG 1: Springfield	176	89	87	27	60
5712	LDP HSG 32: Buileyon Road	255	24	231	58	173
5712.1	LDP HSG 32: Buileyon Road (Phases 1 and 2)	398	214	184	0	184
5712.2	LDP HSG 32: Buileyon Road (Phase3)	327	122	205	59	146
5713	LDP HSG 33: South Scotstoun	306	214	92	12	80
3762	RWELP HSG : Ferrymuir Gait	124	83	41	11	30
5713.1	LDP HSG 33: South Scotstoun (Dimma Park)	72	72	0	0	0
6562	Stoneycroft Road	5	5	0	0	0
6612	Scotstoun Avenue	3	3	0	0	0
OPP64	Land at Ferrymuir	88	27	61	12	49
21/04755/FUL	1 Scotstoun House	25	25	0	0	0
22/01987/FUL	North of Inchgarvie Lodge, Society Road, Port Edgar	49	9	40	13	27
		1843	902	941	192	749

Q-2 Kirkliston Primary School and its feeder secondary school and associated denominational schools.						
Ref	Site	Capacity	Houses	Flats	1 bed	Flats > 1 bed
6244	Wellflats Road	124	116	8	0	8
21/06742/FUL	Overton Farm Road, Newliston	6	6	0		0
	TOTAL	130	122	8	0	8



South West Education Contribution Zone

Sub zone	Actions	£ (Q4, 2022)
SW-1	4 PS Classes (Dean Park Primary School)	£3,863,808
SW-3	New 64-place ELC setting (Canal View / Sighthill Primary Schools' catchment area)	£3,165,500
SW-3	2 PS Classes and 1 GP Class (Canal View Primary School)	£2,693,520
SW-3	3 PS Classes and Dining Hall and Kitchen (Sighthill Primary School)	£4,268,760
SW-3, SW-4	1 PS Class (St Joseph's RC Primary School)	£825,372
SW-1, SW-2	Additional secondary school places – 65 places	£4,481,230
Sw-3, SW-4	Additional secondary school places (RC only) – 13 places	£896,246

Sub zone	Housing Output Assumptions		Per unit rates			
	Type	Housing Output	ELC	Primary	Secondary	Full
SW-1	Flats > 1bed	171	£0	£4,659	£4,964	£9,623
	Houses	240	£0	£12,781	£17,443	£30,224
SW-2	Flats > 1bed	0	£0	£0	£4,964	£4,964
	Houses	0	£0	£0	£17,443	£17,443
SW-3	Flats > 1bed	1,467	£1,791	£4,161	£621	£6,573
	Houses	143	£3,764	£11,415	£2,276	£17,455
SW-4	Flats > 1bed	181	£0	£169	£621	£790
	Houses	47	£0	£462	£2,276	£2,738

Note: allocated sites and proposals consistent with the housing output assumptions in the tables below will be assessed in line with per-unit rates in this guidance, subject to any update reported in the Delivery Programme. Contributions may be likely to change if proposed applications differ from the housing output assumptions that informed the per unit rates set out in the guidance.

The impact of unallocated sites has not been assessed and will be assessed at the point of application.

The per unit rates have been informed by the following housing output assumptions:

Note: sites not estimated to generate at least one primary school pupil are not listed.

City Plan 2030: Supplementary Guidance on Developer Contributions and Infrastructure Delivery Draft for Consultation June 2024

SW-1 Dean Park Primary School, Currie Primary School, Juniper Green Primary School, Nether Currie Primary School and their feeder secondary schools						
Ref	Site	Capacity	Houses	Flats	1 bed	Flats > 1 bed
5947	Lanark Road West	53	0	53	0	53
6563	Gogarmuir Road	10	7	3	0	3
5706	LDP HSG 38: Ravelrig Road	140	116	24	0	24
5716	LDP HSG 37: Newmills Road	206	91	115	24	91
6001	Long Dalmahoy Road	8	8	0	0	0
6626	Lanark Road West	6	6	0		0
6171	Baberton Avenue	5	5	0	0	0
6565	Lanark Road	4	4	0	0	0
6531	Blinkbonny Road	3	3	0	0	0
	TOTAL	435	240	195	24	171

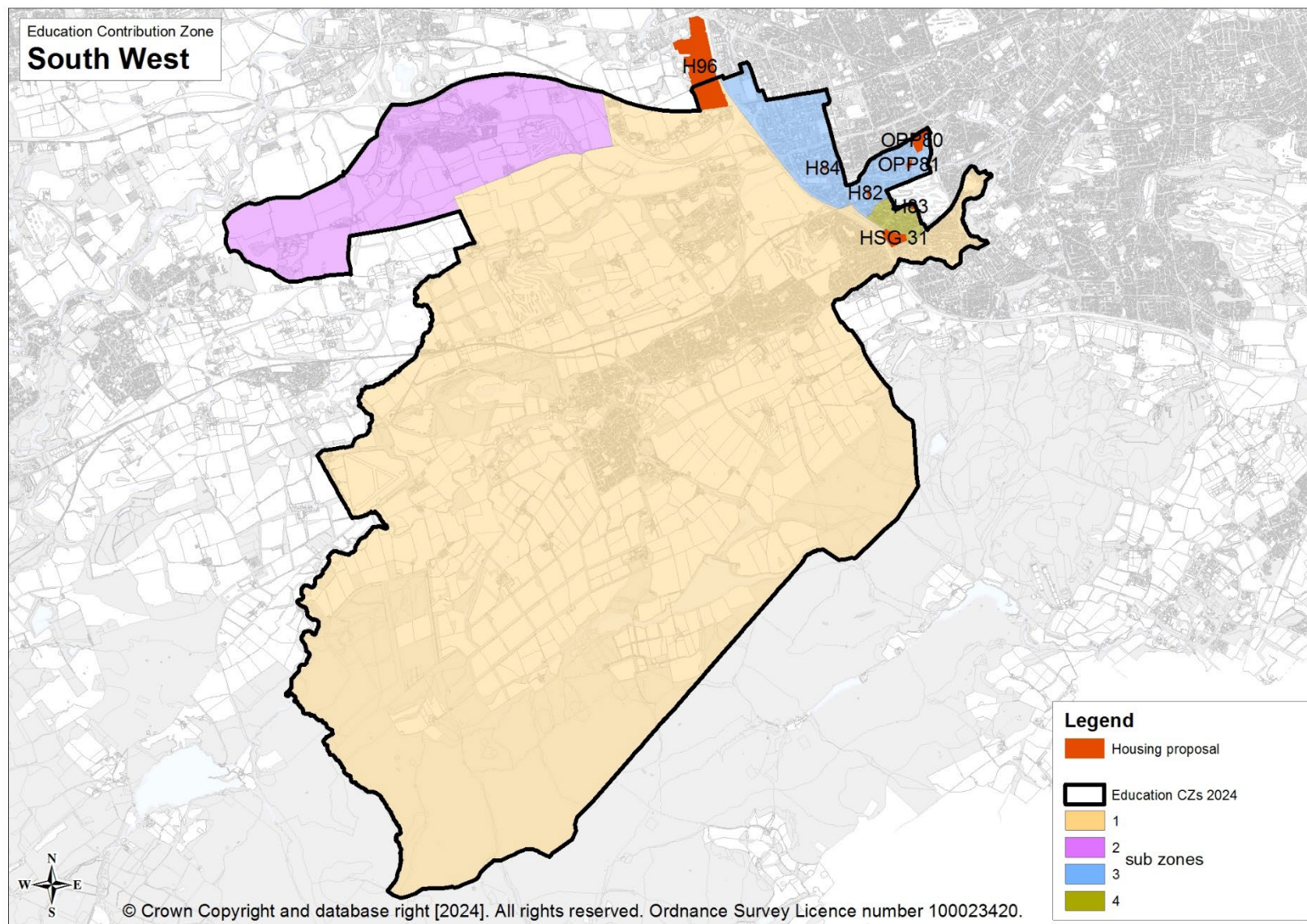
SW-2 Ratho Primary School and its feeder secondary school						
Ref	Site	Capacity	Houses	Flats	1 bed	Flats > 1 bed
	No sites proposed / assessed					

SW-3 Canal View Primary School, Sighthill Primary School and their feeder secondary school and associated denominational schools.						
Ref	Site	Capacity	Houses	Flats	1 bed	Flats > 1 bed
5777	Hailesland Place	32	10	22	7	15
6249	Dumbryden Drive	49	14	35	3	32
6451	Dumbryden Gardens	8	0	8	0	8
OPP80	Murrayburn Road	384	119	265	53	212
OPP81	Dumbryden Drive	124	0	124	37	87
H82	Murrayburn Gate	135	0	135	41	94
5245.2	LDP Del 4: Edinburgh Park / South Gyle	1737	0	1737	738	999
H84	Calder Estate (H)	28	0	28	8	20

City Plan 2030: Supplementary Guidance on Developer Contributions and Infrastructure Delivery Draft for Consultation June 2024

	TOTAL	2497	143	2354	887	1467
--	--------------	-------------	------------	-------------	------------	-------------

SW-4 Clovenstone Primary School and its feeder secondary school and associated denominational schools.						
Ref	Site	Capacity	Houses	Flats	1 bed	Flats > 1 bed
5256	LDP HSG 31: Curriemuirend	188	47	141	28	113
H83	Clovenstone House	97	0	97	29	68
	TOTAL	285	47	238	57	181



Tynecastle Education Contribution Zone

Sub zone	Actions	£ (Q4, 2022)
T-1 (5%)	1 PS Class (St Joseph’s RC Primary School)	£49,328
T-2	New 64-place ELC setting (Balgreen Primary School’s catchment area)	£3,165,500
T-2	5 PS Classes and 1 GP Class and Kitchen (Balgreen Primary School)	£6,878,688
T-1, T-2	Additional secondary school places (RC only) – 8 places	£551,536
	TOTAL	£10,645,052

Sub zone	Housing Output Assumptions		Per unit rates			
	Type	Housing Output	ELC	Primary	Secondary	Full
T-1	Flats > 1bed	402	£0	£88	£621	£709
	Houses	59	£0	£241	£2,276	£2,517
T-2	Flats > 1bed	884	£2,861	£5,856	£621	£9,338
	Houses	106	£6,012	£16,064	£2,276	£24,352

Note: allocated sites and proposals consistent with the housing output assumptions in the tables below will be assessed in line with per-unit rates in this guidance, subject to any update reported in the Delivery Programme. Contributions may be likely to change if proposed applications differ from the housing output assumptions that informed the per unit rates set out in the guidance.

The impact of unallocated sites has not been assessed and will be assessed at the point of application.

The per unit rates have been informed by the following housing output assumptions:

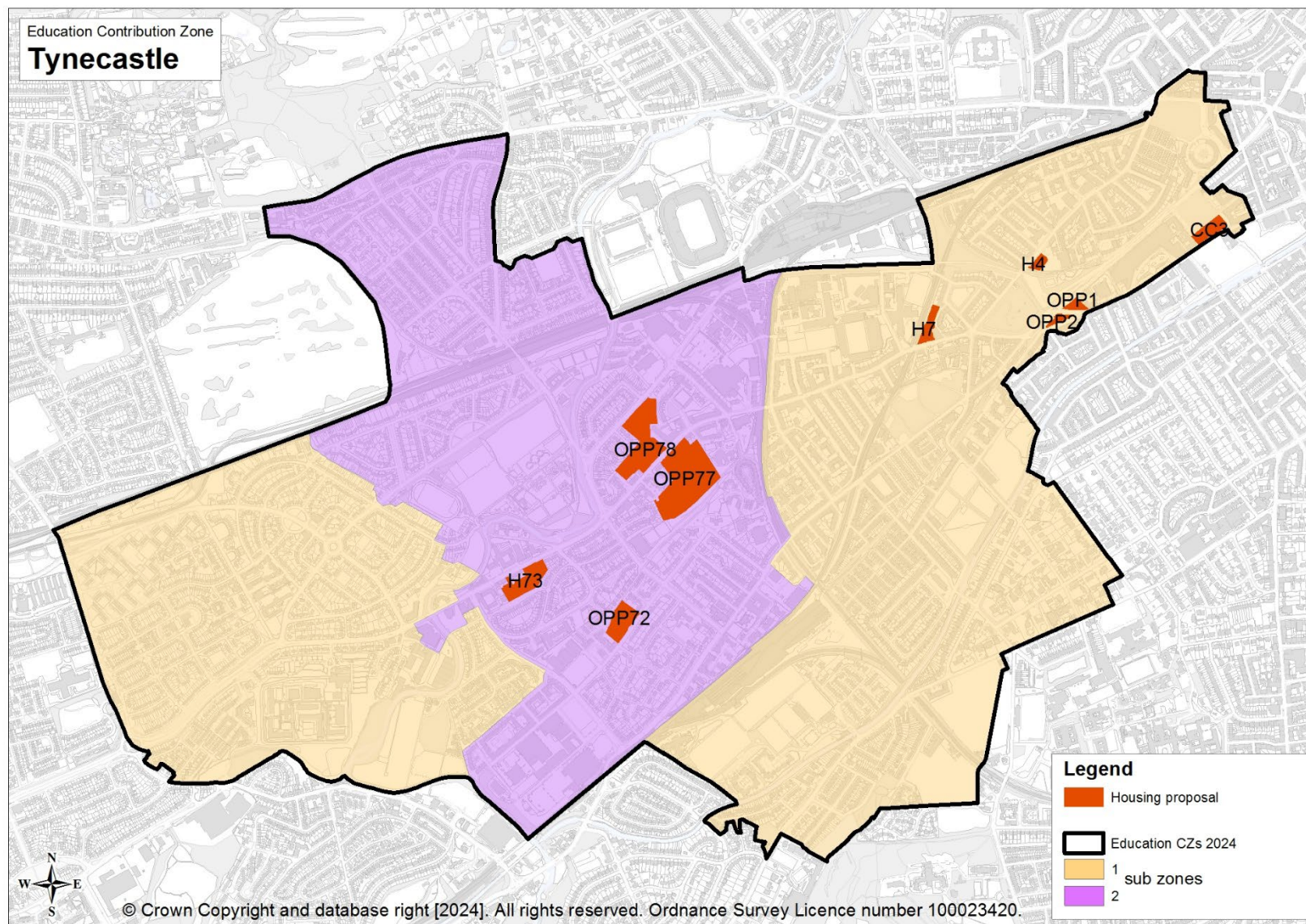
Note: sites not estimated to generate at least one primary school pupil are not listed.

T-1 Craiglockhart Primary School, Dalry Primary School, Stenhouse Primary School and their feeder secondary school and associated denominational schools.						
Ref	Site	Capacity	Houses	Flats	1 bed	Flats > 1 bed
6314	Colinton Road	19	0	19	0	19
6454	Polwarth Terrace	8	0	8	0	8
4338.5	LDP CC3: Fountainbridge	125	0	125	63	62
4338.7	LDP CC3: Fountainbridge	140	0	140	73	67

City Plan 2030: Supplementary Guidance on Developer Contributions and Infrastructure Delivery Draft for Consultation June 2024

6061	Gorgie Road	48	9	39	28	11
OPP1	Dundee Street	45	0	45	14	31
OPP2	Dundee Terrace	45	0	45	14	31
H4	Dalry Road	45	0	45	14	31
H7	Murieston Lane	69	0	69	21	48
5800	Longstone Road	157	50	107	13	94
	TOTAL	701	59	642	240	402

T-2 Balgreen Primary School and its feeder secondary school and associated denominational schools.						
Ref	Site	Capacity	Houses	Flats	1 bed	Flats > 1 bed
6396	Gorgie Road	35	0	35	10	25
6470	Gorgie Road	8	0	8	1	7
OPP72	West Gorgie Park	110	0	110	33	77
H73	Gorgie Road (Caledonian Packaging)	126	15	111	28	83
OPP77	Gorgie Road (east)	469	56	413	103	310
OPP78	Stevenson Road	290	35	255	64	191
22/00670/FUL	117m SW of 6 New Market Road	392	0	392	201	191
	TOTAL	1430	106	1324	440	884



West Edinburgh Education Contribution Zone (excluding Place 16 sites and East of Milburn Tower Application)

Sub zone	Actions	£ (Q4, 2022)
W-1	New 21-class primary school (Maybury Primary School)	£32,722,784
W-1	3 PS Classes and Dining and Kitchen (Hillwood Primary School)	£4,268,760
W-3 (60%)	2 PS Classes (Gylemuir Primary School)	£1,187,006
W-5	New 64-place ELC setting (Broomhouse Primary School's catchment area)	£3,165,500
W-5	1 PS Class (Broomhouse Primary School)	£975,240
W-5 (10%)	1 PS Class (St Jospeh's RC Primary School)	£100,540
W-1, W-2, W-3, W-4, W-5	Additional secondary school places – 556 places	£38,124,926
	TOTAL	£80,544,757
Application	New 14-class primary school (East of Milburn Tower)	£23,967,312

Sub zone	Housing Output Assumptions		Per unit rates			
	Type	Housing Output	ELC	Primary	Secondary	Full
W-1	Flats > 1bed	1,141	£0	£5,951	£4,964	£10,915
	Houses	1,850	£0	£16,326	£17,443	£33,769
W-2	Flats > 1bed	268	£0	£0	£4,964	£4,964
	Houses	30	£0	£0	£17,443	£17,443
W-3	Flats > 1bed	102	£0	£11,638	£4,964	£16,602
	Houses	0	£0	£0	£17,443	£17,443
W-4	Flats > 1bed	39	£0	£0	£4,964	£4,964
	Houses	0	£0	£0	£17,443	£17,443
W-5	Flats > 1bed	177	£8,221	£2,399	£4,964	£15,584
	Houses	99	£17,278	£6,580	£17,443	£41,301
APPLICATION	Flats > 1bed	675	£0	£12,022	£4,964	£16,986
	Houses	575	£0	£25,267	£17,443	£42,710

Note: allocated sites and proposals consistent with the housing output assumptions in the tables below will be assessed in line with per-unit rates in this guidance, subject to any update reported in the Delivery Programme. Contributions may be likely to change if proposed applications differ from the housing output assumptions that informed the per unit rates set out in the guidance.

The impact of unallocated sites has not been assessed and will be assessed at the point of application.

City Plan 2030: Supplementary Guidance on Developer Contributions and Infrastructure Delivery Draft for Consultation June 2024

The per unit rates have been informed by the following housing output assumptions:

Note: sites not estimated to generate at least one primary school pupil are not listed.

W-1 Corstorphine Primary School, Hillwood Primary School, Maybury Primary School and their feeder secondary school and associated denominational schools.						
Ref	Site	Capacity	Houses	Flats	1 bed	Flats > 1 bed
6317	Corstorphine Road	76	0	76	16	60
6289	St John's Road	36	4	32	2	30
6405	Meadow Place Road	24	0	24	0	24
4897	LDP HSG 7: Edinburgh Zoo	80	60	20	3	17
OPP66	St John's Road (A)	14	0	14	4	10
OPP67	St John's Road (B)	72	0	72	22	50
OPP68	Kirk Loan	16	0	16	5	11
3747	LDP HSG 5: Hillwood Rd	132	96	36	4	32
H65	Old Liston Road	104	32	72	14	58
5247A	LDP HSG 20: Cammo	197	83	114	6	108
5247B	LDP HSG 20: Cammo	458	185	273	35	238
5246.1	LDP HSG 19: Maybury East	250	205	45	0	45
5246.2.1	LDP HSG 19: Maybury Central – 124 Turnhouse Road	5	5	0	0	0
5246.2.2	LDP HSG 19: Maybury Central – Plot 4	158	35	123	42	81
5246.2.3	LDP HSG 19: Maybury Central – Plot 5	142	43	99	44	55
5246.2.4	LDP HSG 19: Maybury Central – Plot 1	213	198	15	0	15
5246.2.5	LDP HSG 19: Maybury Central – Plots 2/3	269	210	59	8	51
5246.2.6	LDP HSG 19: Maybury Central – Plots 6a/6b/7/8	267	163	104	9	95
5246.2.7	LDP HSG 19: Maybury Central – Plot 13	125	55	70	30	40
5246.2.8	LDP HSG 19: Maybury Central – Plots 10/11/12	318	278	40	0	40
5246.2.9	LDP HSG 19: Maybury Central – Plot 9	122	51	71	17	54
5246.2.10	LDP HSG 19: Maybury Central – Plot 6c	49	49	0	0	0
5246.3	LDP HSG 19: Maybury West	130	98	32	5	27

City Plan 2030: Supplementary Guidance on Developer Contributions and Infrastructure Delivery Draft for Consultation June 2024

	TOTAL	3257	1850	1407	266	1141
--	--------------	-------------	-------------	-------------	------------	-------------

W-2 Blackhall Primary School, Clermiston Primary School, Cramond Primary School, Davidson's Mains Primary School, East Craig's Primary School, Fox Covert Primary School and their feeder secondary schools and associated denominational schools.						
Ref	Site	Capacity	Houses	Flats	1 bed	Flats > 1 bed
6024	Ravelston Dykes Road	3	3	0	0	0
6271	Barnton Avenue West	11	0	11	0	11
6564	Barnton Avenue West	48	4	44	9	35
4502	West Coates	203	0	203	105	98
6318	Corstorphine Road	28	5	23	0	23
H5	Roseburn Street	152	18	134	33	101
	TOTAL	445	30	415	147	268

W-3 Gylemuir Primary School and its feeder secondary school and associated denominational schools.						
Ref	Site	Capacity	Houses	Flats	1 bed	Flats > 1 bed
6399	Gylemuir Road	126	0	126	24	102
	TOTAL	126	0	126	24	102

Note: Housing development as part of LDP Del 4 (HLA ref 5245.2) is aligned to Sighthill Primary School (South West Contribution Zone). Further development in Gylemuir Primary School's catchment area will need to be assessed separately.

W-4 Carrick Knowe Primary School, Murrayburn Primary School and their feeder secondary schools and associated denominational schools.						
Ref	Site	Capacity	Houses	Flats	1 bed	Flats > 1 bed
6374	Pinkhill	46	0	46	18	28
H69	Corstorphine Road (A)	16	0	16	5	11
	TOTAL	62	0	62	23	39

City Plan 2030: Supplementary Guidance on Developer Contributions and Infrastructure Delivery Draft for Consultation June 2024

W-5 Broomhouse Primary School and its feeder secondary school and associated denominational schools.						
Ref	Site	Capacity	Houses	Flats	1 bed	Flats > 1 bed
H79	Broomhouse Terrace	320	99	221	44	177
	TOTAL	320	99	221	44	177

East of Milburn Tower Application Site						
Ref	Site	Capacity	Houses	Flats	1 bed	Flats > 1 bed
6519	East of Milburn Tower	1,350	675	675	100	575
	TOTAL	1,350	675	675	100	575

West Edinburgh – W-6 – Place 16 and the West Edinburgh Planning Framework and Strategic Masterplan

Sub zone	Actions	£ (Q4, 2022)
W-6	New 21-class primary school	£29,481,024
W-6	New 21-class primary school	£29,481,024
W-6	New 14-class primary school	£23,967,312
W-6	New 14-class primary school (RC)	£23,967,312
	TOTAL Primary School Infrastructure	£106,896,672
W-6	New 1,200 secondary school (with expansion to 1,800)	£81,898,740
	TOTAL Secondary School Infrastructure	£81,898,740
The above costs are project construction costs only and exclude servicing and remediation costs and land value. The Council requires school sites to be fully serviced and remediated and free from any constraints.		

Housing Output Assumptions

W-6 Place 16 and the West Edinburgh Planning Framework and Strategic Masterplan						
Ref	Site	Capacity	Houses	Flats	1 bed	Flats > 1 bed
5244	LDP Emp 6 IBG	350	260	90	12	78
H59	Land at Turnhouse Road (SAICA)	1,000	200	800	320	480
OPP60	Turnhouse Road	200	40	160	64	96
H61	Crosswinds	2,500	500	2,000	800	1,200
H62	Land adj to Edinburgh Gateway	250	50	200	80	120
H63	Edinburgh 205	7,000	1,400	5,600	2,240	3,360
	TOTAL	11,300	2,450	8,850	3,516	5,334

Estimated Pupil Generation based on above Housing Output Assumptions:

Ref	Site	PS	% share of PS	SS	% share of SS
5244	LDP Emp 6 IBG	123	6.5%	71	7.1%

City Plan 2030: Supplementary Guidance on Developer Contributions and Infrastructure Delivery Draft for Consultation June 2024

H59	Land at Turnhouse Road (SAICA)	160	8.5%	85	8.5%
H60	Turnhouse Road	32	1.7%	17	1.7%
H61	Crosswinds	401	21.3	213	21.2%
H62	Land adj to Edinburgh Gateway	40	2.1%	21	2.1%
H63	Edinburgh 205	1,123	59.8%	596	59.4%
	TOTAL	1,879	100%	1,003	100%

Per site costs based on the above assumptions:

Ref	Site	% PS	£ PS	% SS	£ SS	£ FULL
	Total Primary and Secondary Infrastructure Costs		£106,896,672		£81,898,740	
5244	LDP Emp 6 IBG	6.5%	£6,997,494	7.1%	£5,797,419	£12,794,913
H59	Land at Turnhouse Road (SAICA)	8.5%	£9,102,431	8.5%	£6,940,572	£16,043,003
H60	Turnhouse Road	1.7%	£1,820,487	1.7%	£1,388,115	£3,208,602
H61	Crosswinds	21.3	£22,812,968	21.2%	£17,392,255	£40,205,223
H62	Land adj to Edinburgh Gateway	2.1%	£2,275,608	2.1%	£1,714,730	£3,990,338
H63	Edinburgh 205	59.8%	£63,887,687	59.4%	£48,665,653	£112,553,340
Site contributions exclude servicing and remediation costs and land value.						

