

The Planning & Building Standards Service



Introduction

The Planning and Building Standards service has now completed a review of how we deliver our service. The service now has a more area based focus with teams based on an east and west split allocated across the City to deal with planning and building warrant applications. This will help integrate both these processes and has brought our enforcement and listed building functions into the area teams. The major applications will be handled in central, west, east and waterfront areas of the city.

The service will also have a city wide function progressing key areas such as the development plan and the built and natural environment. The built environment team will have an emphasis on placemaking, with the natural environment team now responsible for issues such as tree enquiries and high hedge applications.

Planning and Building Standards online

Most of the information about what we do and how to apply for permission is available on our website. Here you can also find out more about the policies we use to make decisions. You can also view and comment on live applications and view historic records to see what permissions are in place.

- ***Planning***

<http://www.edinburgh.gov.uk/planning>

- ***Building Standards***

<http://www.edinburgh.gov.uk/buildingstandards>

- ***Reporting possible breaches in planning control***

<http://www.edinburgh.gov.uk/info/20066/enforcement>

- ***Historic planning records***

<http://www.edinburgh.gov.uk/historicplanningrecords>

What the teams do

Major applications

The City is split in to four key development areas in the west, waterfront, east and central for major developments. Typically, these teams manage large planning proposals and initiatives, which will have a significant impact at a local and city level with the potential for new places to be created.

Local, householder, listed building applications and enforcement issues

The applications and enquiries are handled by teams in the east and west of the City. Typically, these teams manage applications such as house extensions, new uses and alterations to shop fronts. The teams also deal with listed building applications and enforcement enquiries.

Strategic development plan

This team provides the input to the Strategic Development Plan through SESplan and works with neighbouring authorities to deliver large scale planning proposals for the City and the region. The team also undertakes research and information using data such as the census.

Local development plan

This team works on the local development plan for the City, which sets out policies and proposals to guide development. The team also prepares detailed planning guidance.

Built Environment

This team works on conservation and World Heritage Site issues, focussing on streetscape, public realm and place making. The team works towards protecting and enhancing the whole city, old and new, working with other Council services to deliver excellent places.

Natural Environment

This team has a responsibility for the biodiversity action plan and includes tree enquiries and high hedges applications.

Service delivery

This team manages the review of local planning applications (local reviews) and appeals against planning refusals. The team includes community engagement, co-ordinating complaints, communications (web and social media), customer care, and reporting on performance.

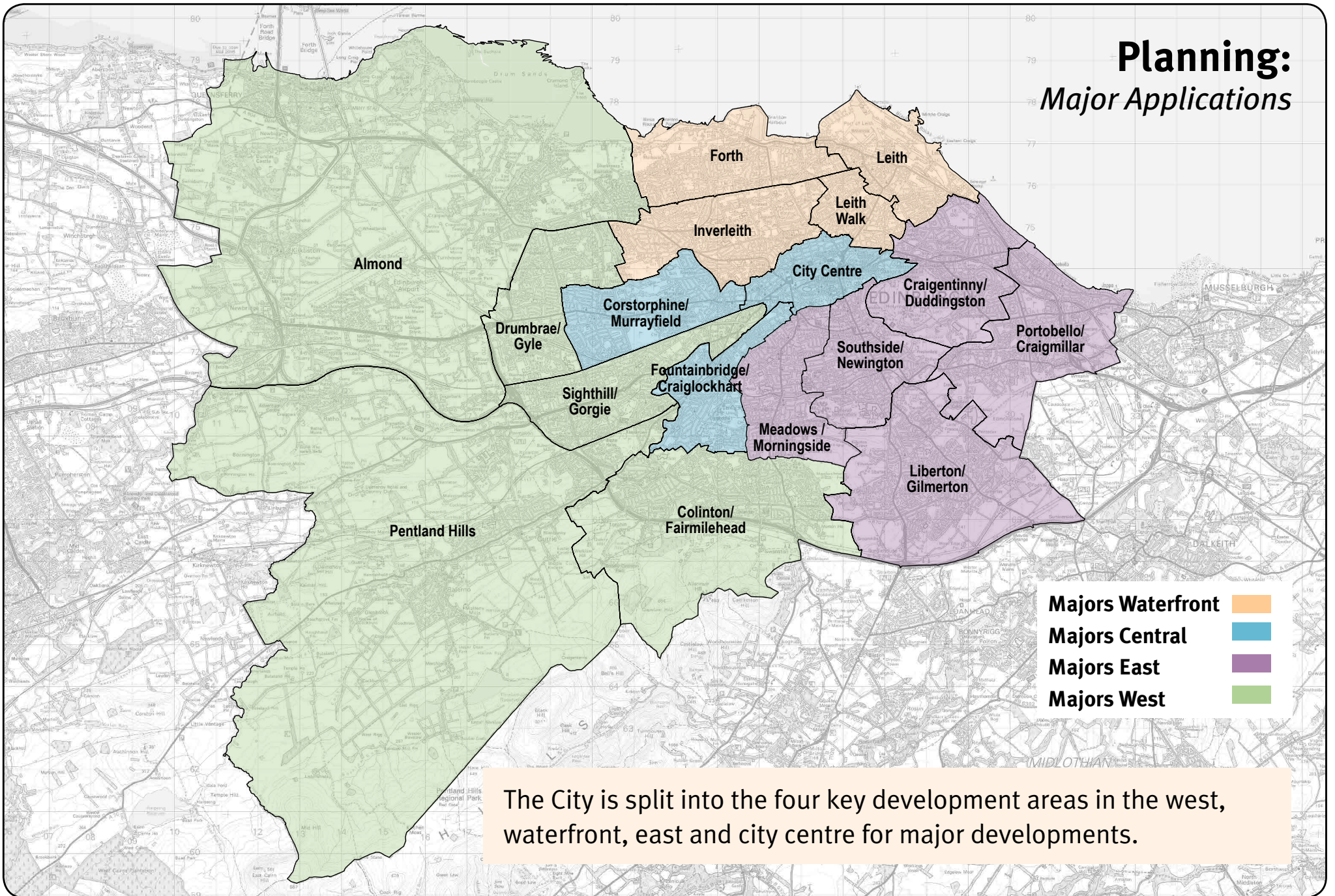
Data Management

This team manages much of our 'back of house' systems including our online planning and building warrant services and GIS mapping.

Building warrants

Building warrant applications and enquiries are handled by five teams based on central, north east, south east, south west and north west areas of the City. Building warrants are typically required for building work including large developments, alterations and extensions.

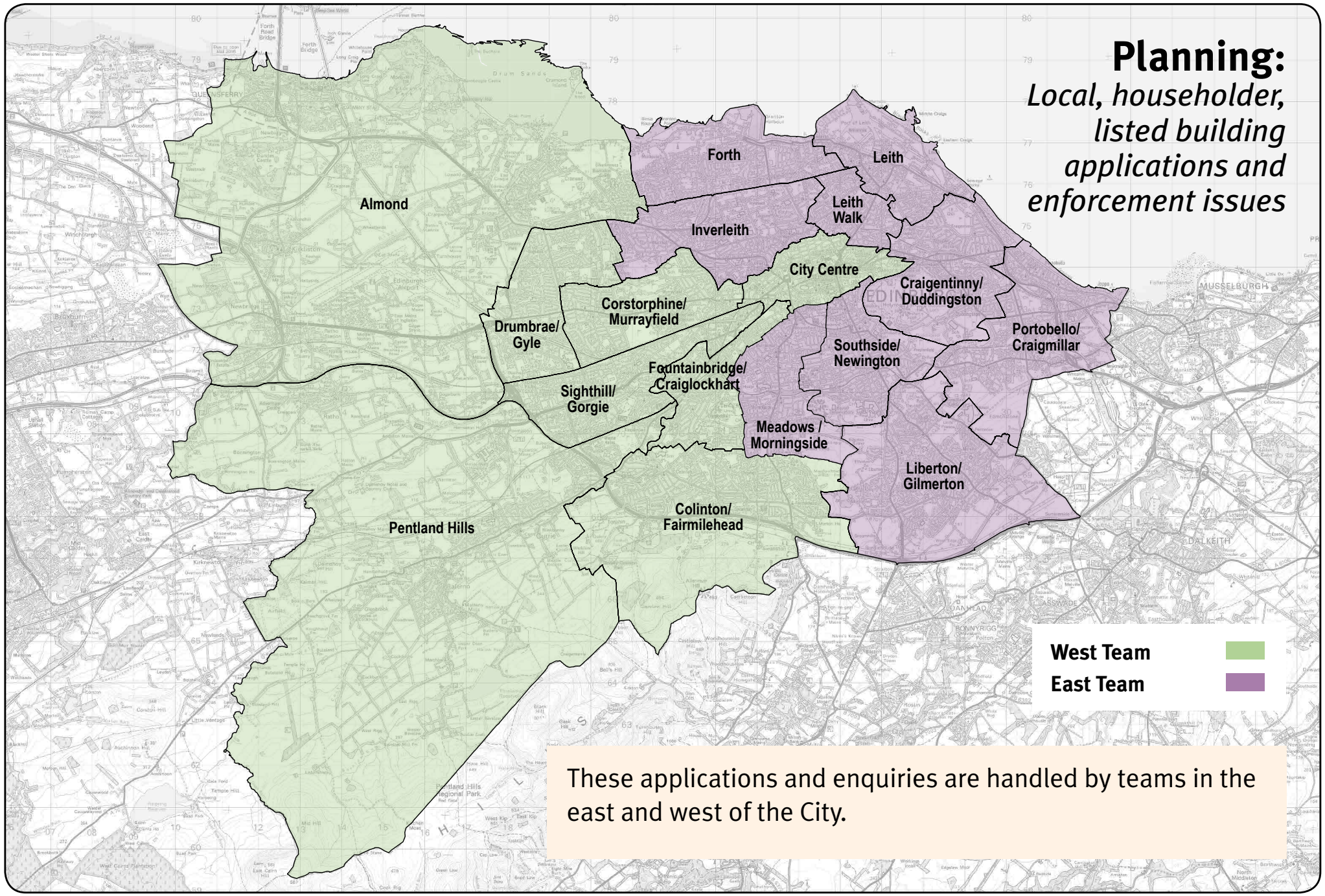
Planning: Major Applications



The City is split into the four key development areas in the west, waterfront, east and city centre for major developments.

Planning:

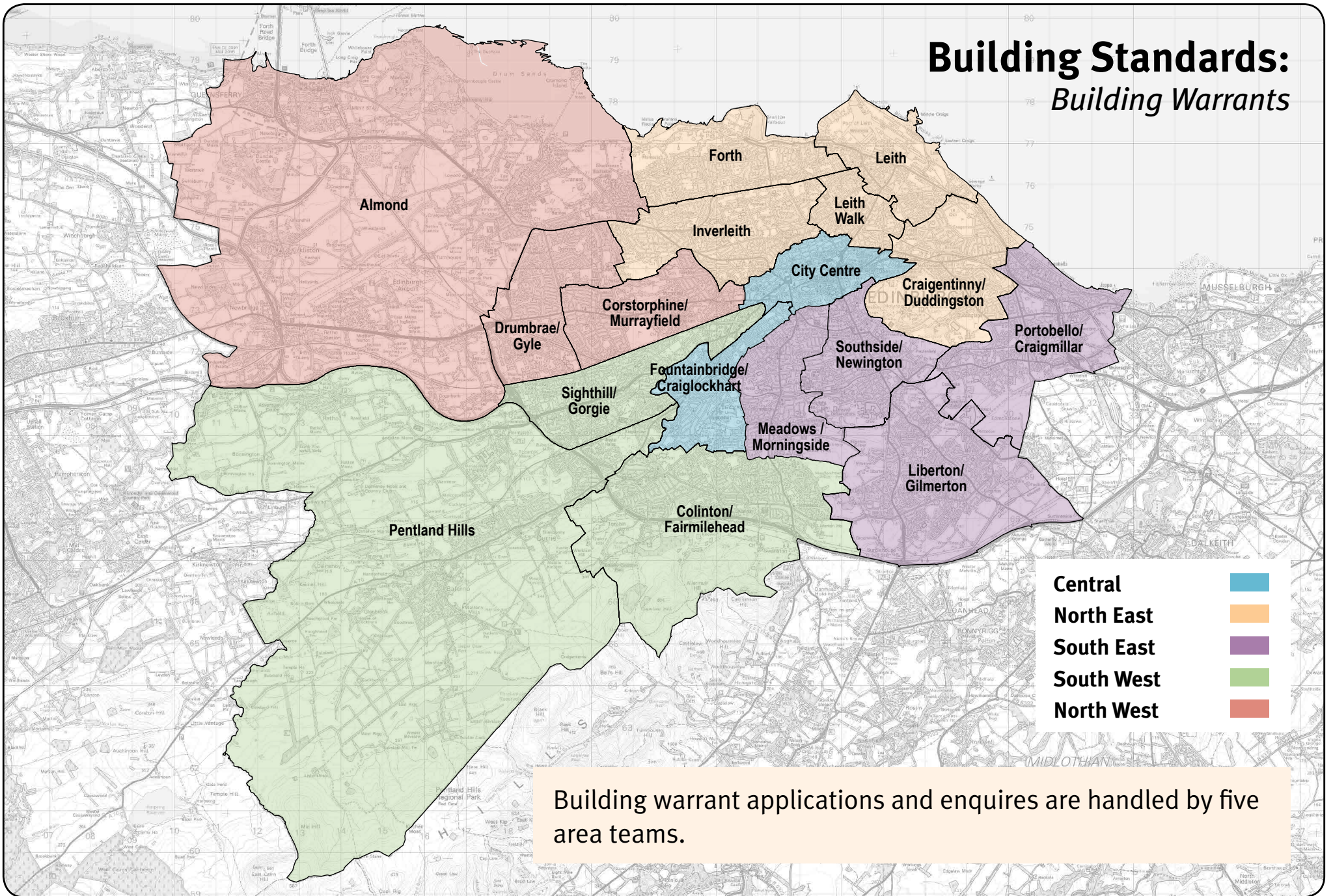
*Local, householder,
listed building
applications and
enforcement issues*



West Team ■
East Team ■

These applications and enquiries are handled by teams in the east and west of the City.

Building Standards: *Building Warrants*



Central	
North East	
South East	
South West	
North West	

Building warrant applications and enquires are handled by five area teams.

PLANNING & BUILDING STANDARDS STRUCTURE



Contacts

	Team Manager	Email address	Phone
Planning			
General planning enquiries:		planning@edinburgh.gov.uk	0131 529 3550
Major applications			
Central:	David Cooper	majordevelopments.west@edinburgh.gov.uk	0131 529 6233
East:	Linda Hamilton	majordevelopments.east@edinburgh.gov.uk	0131 529 3146
West:	Andrew Sikes	majordevelopments.west@edinburgh.gov.uk	0131 469 3412
Waterfront:	Alison Kirkwood	majordevelopments.east@edinburgh.gov.uk	0131 469 3590
Local developments and listed buildings			
All listed building enquiries:		listed.buildings@edinburgh.gov.uk	
West:	Elaine Campbell	localdevelopments.west@edinburgh.gov.uk	0131 529 3612
East:	Paul Devaney	localdevelopments.east@edinburgh.gov.uk	0131 529 3911
Householders, licensing and enforcement			
West:	Kevin Ryan	householders.west@edinburgh.gov.uk	0131 529 3721
East:	Alan Moonie	householders.east@edinburgh.gov.uk	0131 529 3909
Strategic development plan	Ken Tippen		0131 469 3613
Local development plan	Ben Wilson	localdevelopmentplan@edinburgh.gov.uk	0131 469 3411
Built environment	Will Garrett	built.environment@edinburgh.gov.uk	0131 469 3636
Natural environment	Gina Bellhouse	natural.environment@edinburgh.gov.uk	0131 469 3723
Service Delivery	Nancy Jamieson		0131 529 3916
	Local Review Body enquiries	Localreviewbody@edinburgh.gov.uk	
Data Management	Mike Bell	planning.systems@edinburgh.gov.uk	0131 529 3661
Building Standards			
Central	Muir Somerville	buildingwarrant.applications@edinburgh.gov.uk	0131 529 4579
North East	Colin Wishart	buildingwarrant.applications@edinburgh.gov.uk	0131 529 4888
South East	Brian Hardie	buildingwarrant.applications@edinburgh.gov.uk	0131 529 4497
South West	Robert Godsman	buildingwarrant.applications@edinburgh.gov.uk	0131 529 4532
North West	Charles Nisbet	buildingwarrant.applications@edinburgh.gov.uk	0131 529 4285