

# Consultation on the proposal for a New Primary School at Gilmerton Station Road

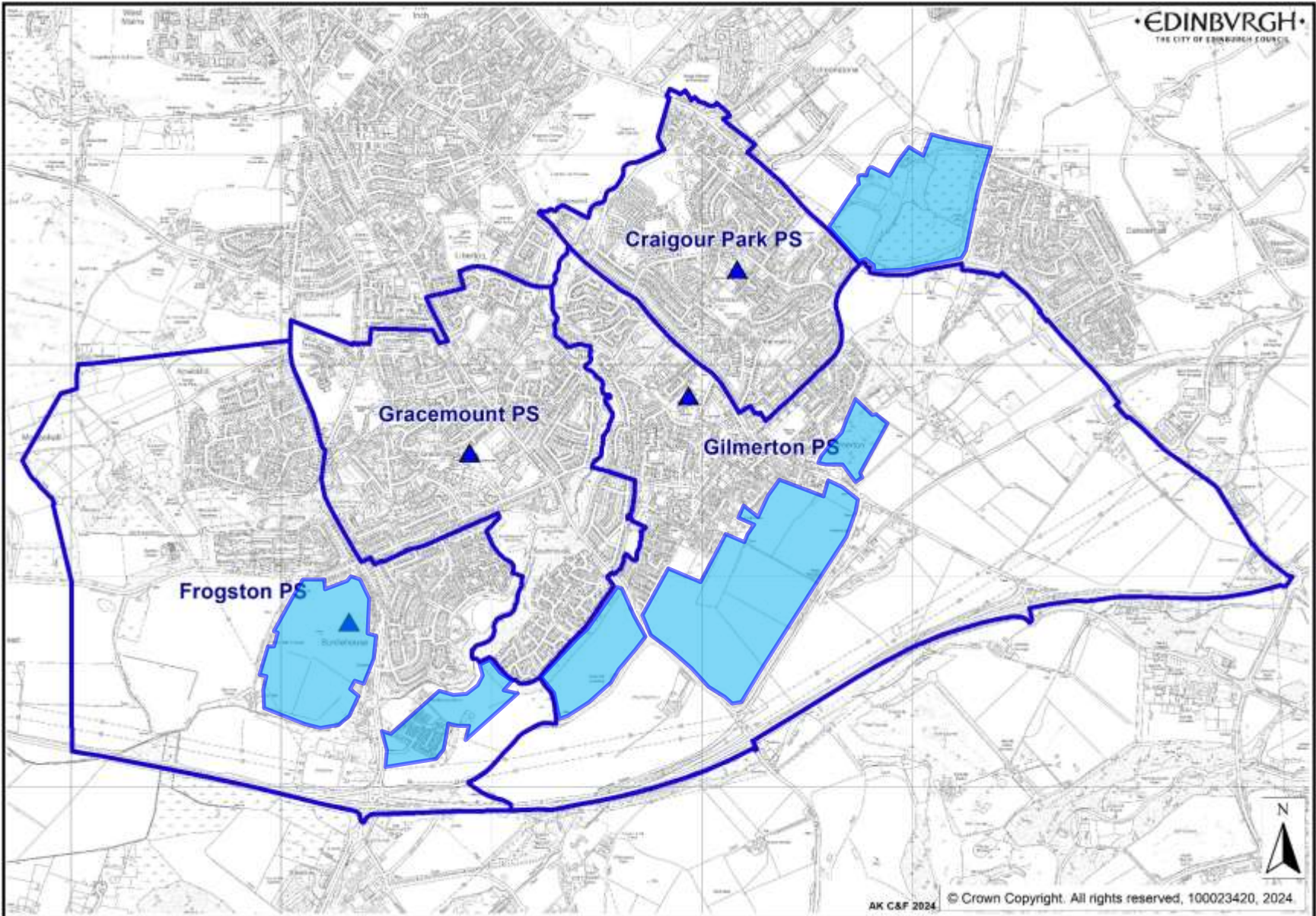
Thursday 26<sup>th</sup> September 2024,  
Gilmerton Primary School



# Introductions

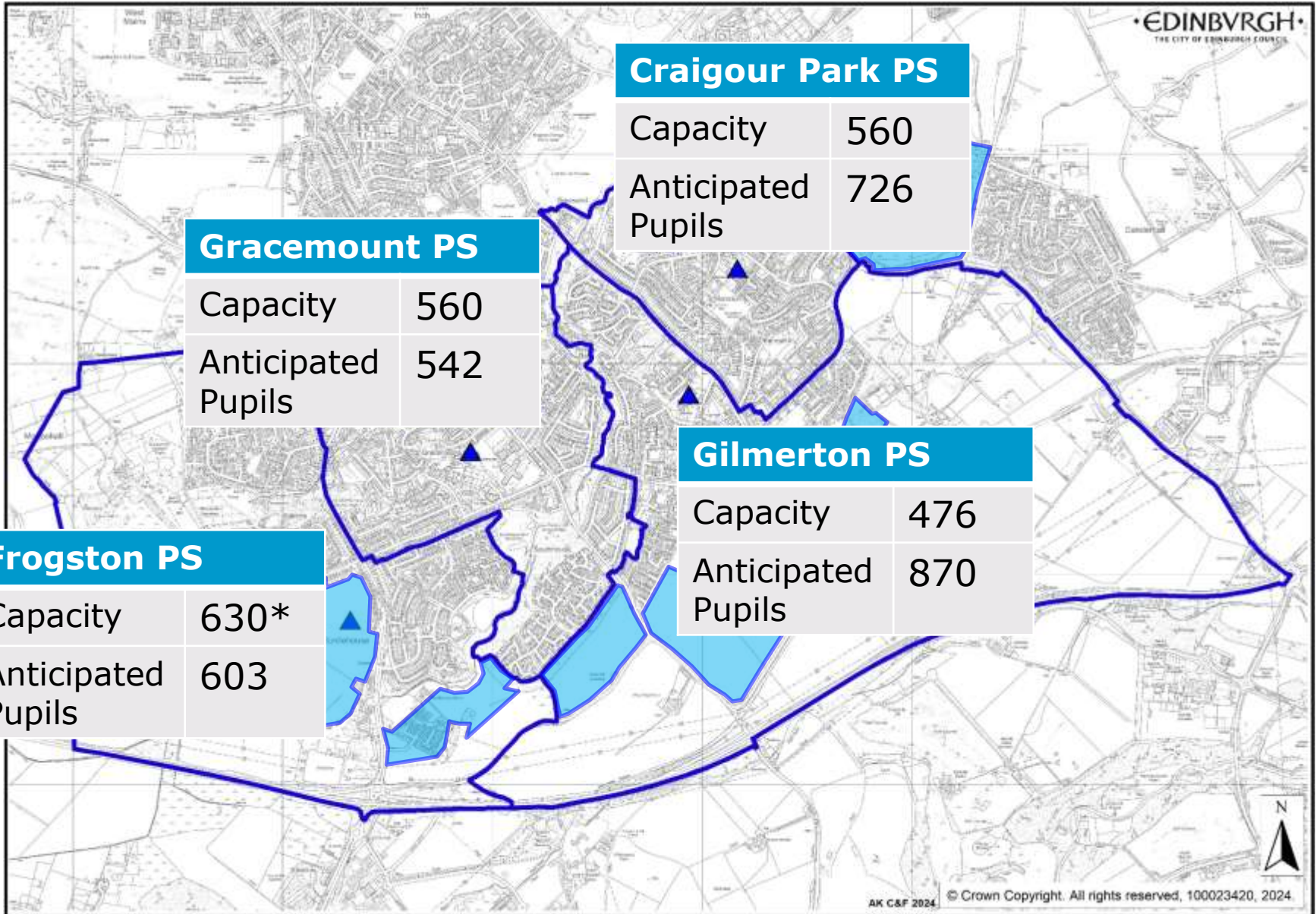
- Tom Wood - Chair
- Councillor Joan Griffiths
- Cath Crystal – Senior Education Officer
- Robbie Crockatt–Strategic Asset Planning Manager
- Peter Garner – Learning Estate Planning Officer

# Existing Primary School Catchments

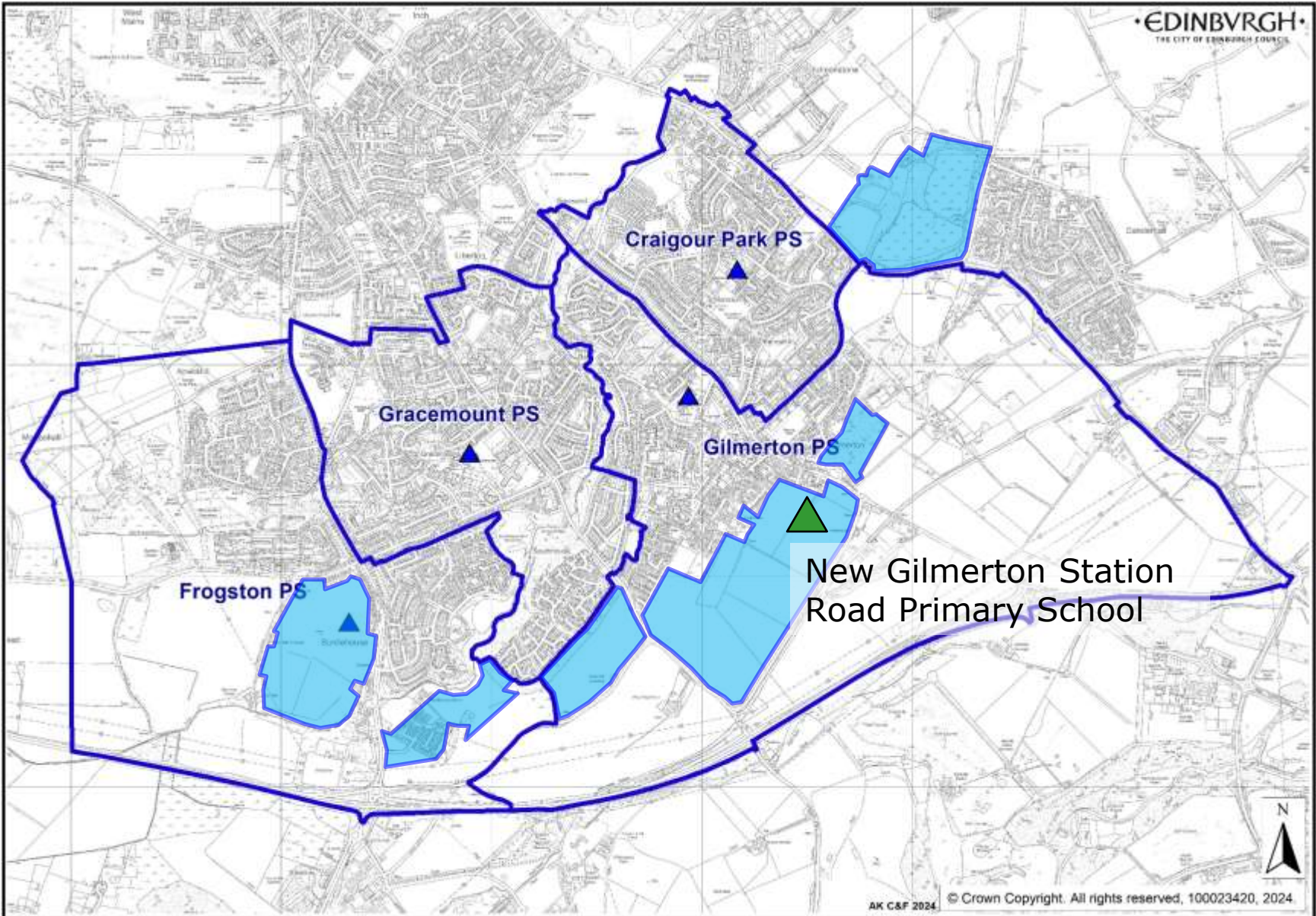




# Estimated Peak Demand for PS Places



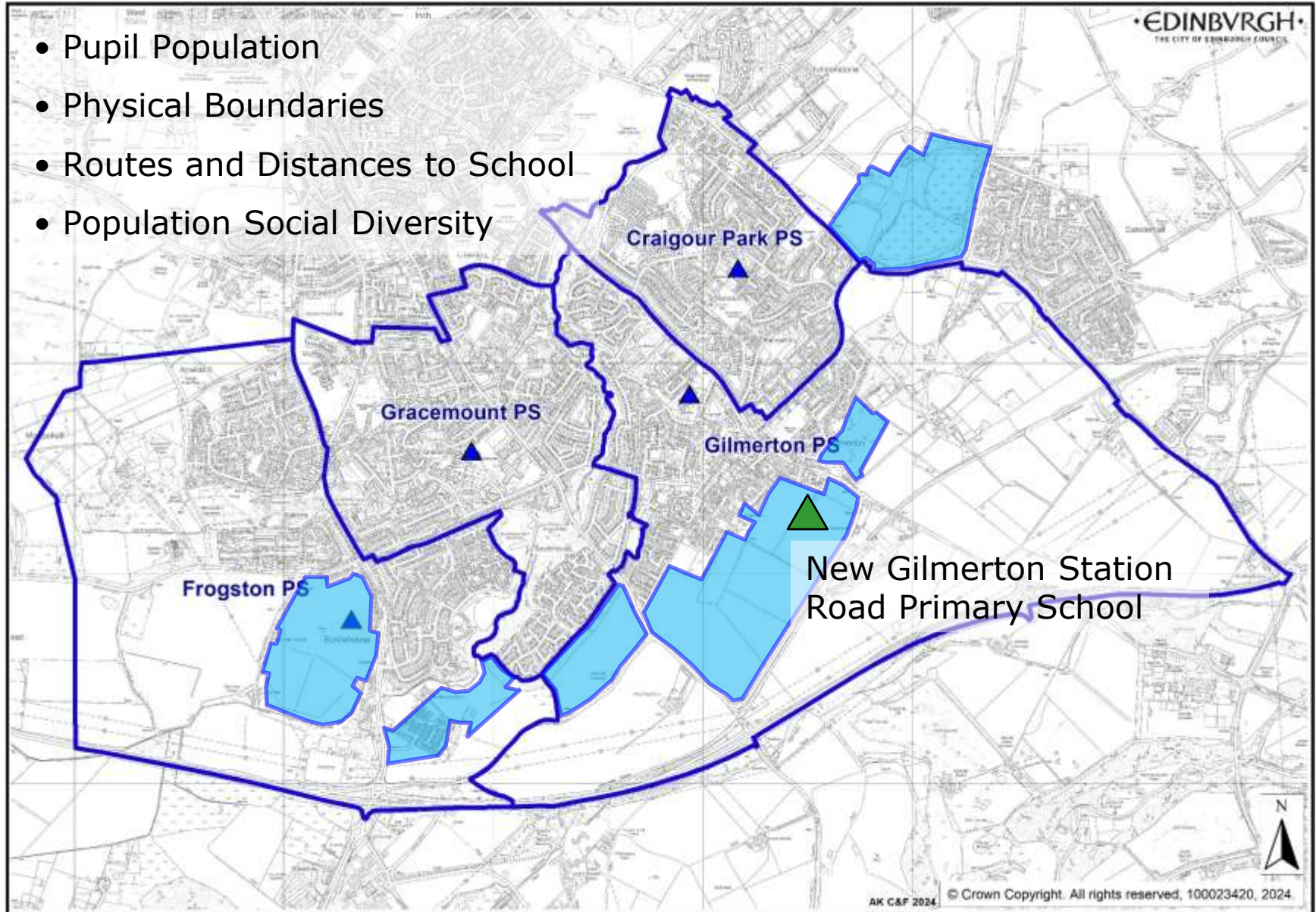
# How We Develop the Catchment Area





# How We Develop the Catchment Area

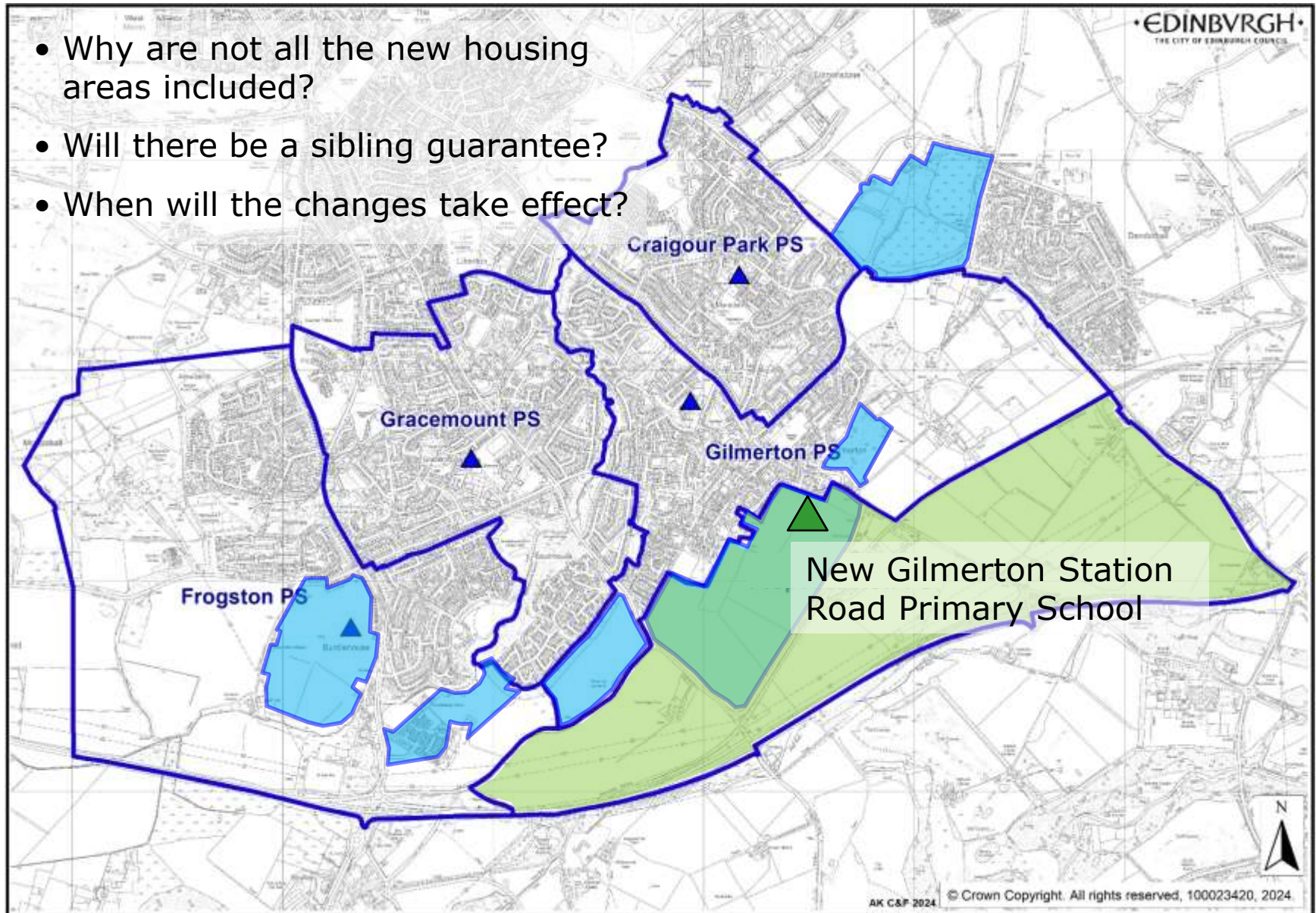
- Pupil Population
- Physical Boundaries
- Routes and Distances to School
- Population Social Diversity





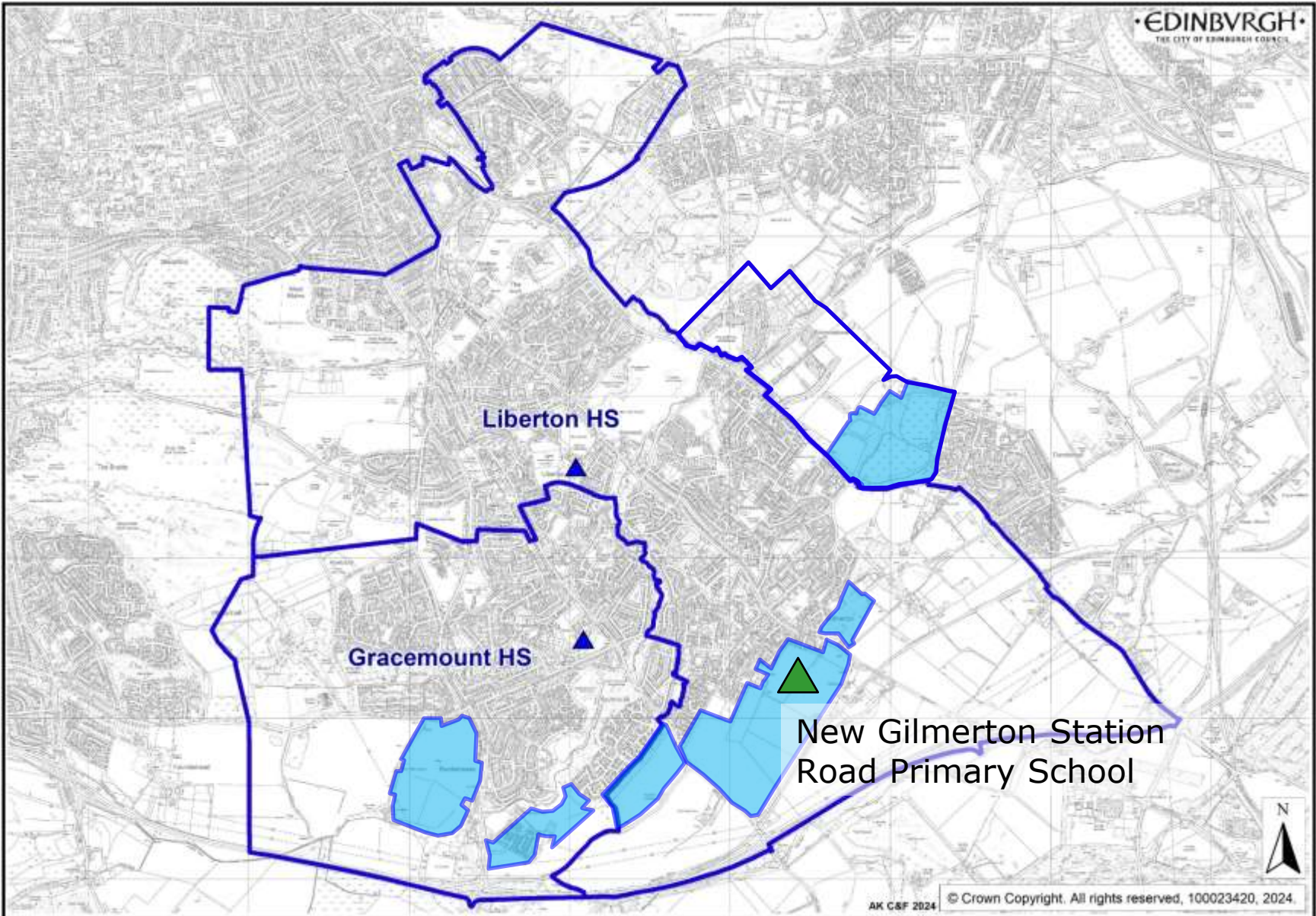
# How We Develop the Catchment Area

- Why are not all the new housing areas included?
- Will there be a sibling guarantee?
- When will the changes take effect?





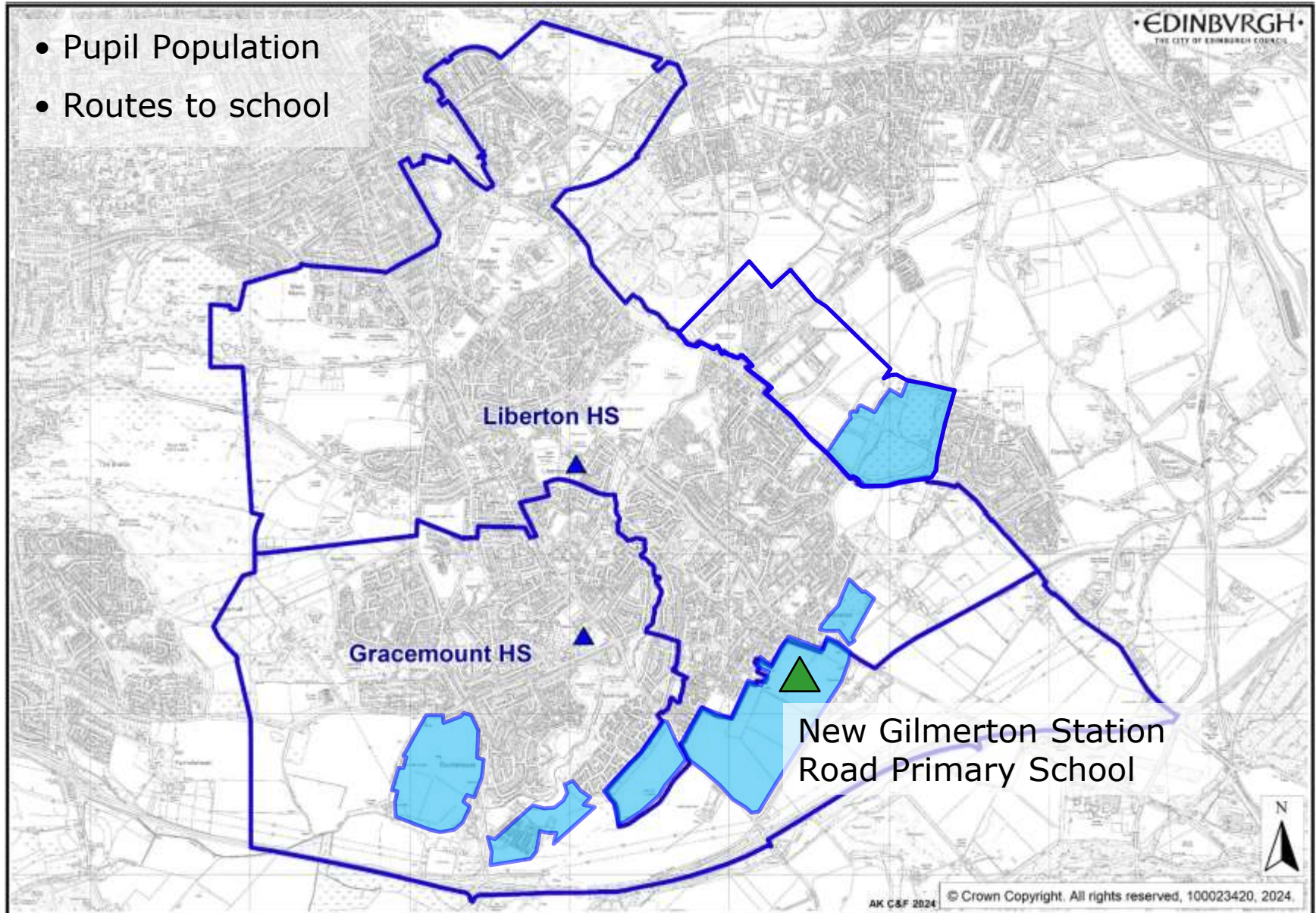
# Existing Secondary School Catchments





# Existing Secondary School Catchments

- Pupil Population
- Routes to school





# New School Site





# New Primary School Projects

**St John's RC Primary School**



**Victoria Primary School**



**Frogston Primary School**



**Canaan Lane Primary School**



# Statutory Consultation

- In June 2024 Committee approved that a statutory consultation be carried out to establish a new non-denominational Primary School and Nursery Classes at Gilmerton Station Road with associated catchment changes.
- The new building would be built with 15 classes with an expansion strategy should that ultimately be required.
- Safe routes and active travel will be promoted.



# Proposal Implications

- If approved, new school building expected to open August 2028.
- Catchment changes to come into effect in November 2027.
- No changes to RC school catchments

# Next Steps...

- Statutory Consultation - Closes Thursday 3rd October 2024.
- Education Scotland Report.
- Outcome of Consultation Report - Council meeting in December 2024.



# Further Information and Online Survey

[www.edinburgh.gov.uk/gilmertonstationroad](http://www.edinburgh.gov.uk/gilmertonstationroad)

**Thank you for your time**

