

Proposal to Establish a New Non-Denominational Primary School and Implement Catchment Changes in South East Edinburgh

Affecting Gilmerton Primary School, Gracemount High School, and Liberton High School.

Contents

1. Introduction	2
2. Background and Context	3
3. Details of Proposal	9
4. Educational Benefits	15
5. Financial Considerations	16
6. Indicative Timescales	18
7. Consultation Process	19
8. Appendices	22
• Appendix 1 – Map of Existing Primary School (Non-denominational) Catchment Areas in the South East Edinburgh	
• Appendix 2 – Map of Existing Secondary School (Non-denominational) Catchment Areas in South East Edinburgh	
• Appendix 3 – Map of Proposed Primary School (Non-denominational) Catchment Areas in South East Edinburgh	
• Appendix 4 – Map of Proposed Secondary School (Non-denominational) Catchment Areas in South East Edinburgh	
• Appendix 5 – Response Questionnaire	

1. Introduction

- 1.1. The Council is proposing that a new non-denominational (ND) primary school and nursery classes be built in the 'Gilmerton Station Road' housing development site in southeast Edinburgh. The new school will be aligned to Gracemount High School.
- 1.2. A catchment area for the new school has been designed to take pressure off Gilmerton Primary School whilst making the most efficient use of existing school capacity. Accordingly, under this proposal a change would be required to the catchment area of Gilmerton Primary School, Gracemount High School and Liberton High School.
- 1.3. Maps showing existing primary and secondary school catchment areas can be found in Appendices 1 and 2 respectively. Maps showing the proposed school catchment areas can be found in Appendices 3 and 4.
- 1.4. This consultation paper lets you know why we think a new school is required at Gilmerton Station Road and possible implications of the catchment changes proposed. It also sets out the consultation process and the means and timescales for submitting your views.
- 1.5. If the proposal to establish a new school is accepted, it could open in August 2028 at the earliest. This means that the catchment changes could be effective from November 2027 in time for the P1 registration process.

Have Your Say

- 1.6. Your views will help inform the final decisions about the delivery of a new school and its catchment area. For more information and to give us your views please visit our website: www.edinburgh.gov.uk/gilmertonstationroad
- 1.7. Comments on the proposal should be submitted by no later than **end of Thursday 3 October 2024**. A response questionnaire can be completed online via the Council website: www.edinburgh.gov.uk/gilmertonstationroad
- 1.8. Alternatively, a copy of the questionnaire is included in [Appendix 5](#), and this can also be submitted by email to: newgilmertonstationroadprimary@edinburgh.gov.uk; or by post to the addresses set out in [Section 7](#) of this paper.
- 1.9. Two public meetings in relation to these proposals will be held as per below:

Date	Time	Venue
Thursday, 12 September 2024	18:30 – 20:30	Gilmerton Primary School
Wednesday, 18 September 2024	18:30 – 20:30	Gracemount High School

2. Background and Context

Primary Schools

Gilmerton Primary School

Capacity

- 2.1. Gilmerton Primary School currently has capacity for 546 pupils (19 classes). However, this figure assumes continued use of two life expired temporary classrooms. These classrooms have been retained and maintained until now to support the early stages of housing development. Under these proposals the temporary classrooms would be removed. Accordingly, for the purposes of this paper, Gilmerton Primary School's capacity is assumed to be 476 pupils (17 classes).

Catchment Population

- 2.2. Approximately 2,000 of the 5,000 new homes in the area are built, or will be built, in Gilmerton Primary School's catchment area.
- 2.3. In 2016/17 Gilmerton Primary School's current catchment area had a population of 336 non-denominational primary pupils. By 2023/24 this had increased to 563 pupils (a 68% increase). 287 (51%) of these 563 ND pupils lived in a home built since 2016. It is estimated that these new homes will continue to generate an increasing number of pupils. Further new housing which is in development will add to this. In total it is estimated that new housing in Gilmerton Primary School's current catchment area could generate up to 663 ND primary school pupils.
- 2.4. While the number of pupils from Gilmerton Primary School's ND catchment population living in housing built *before* 2016 is currently low at 276 pupils (in line with falling primary school rolls across the city), it previously peaked at 359 pupils in 2003 and then again at 360 pupils in 2014.
- 2.5. When the 360 pupil peak from older housing is added to the 663 pupil peak estimated from new housing, peak demand for 1,023 primary school places is estimated from Gilmerton Primary School's catchment area in future years.
- 2.6. It is anticipated that around 15% of these 1,023 pupils would attend a school other than Gilmerton Primary School or one of the schools in the Gilmerton and Gracemount areas. Accordingly, peak demand for primary places from the Gilmerton Primary School catchment area is estimated to be 870 pupils. With capacity for 476 pupils, Gilmerton Primary School does not have capacity to meet this demand, creating an estimated shortfall of 394 ND places in Gilmerton's catchment area. This is the equivalent of a double stream primary school.

Frogston Primary School

- 2.7. Frogston Primary School was built to support the development of over a thousand new homes west of Burdiehouse Road. The new school is two stream (15 classes) and currently has capacity for 434 pupils. Frogston is projected to exceed its available capacity by 2027. A separate project is underway to extend Frogston to three streams (22 classes), allowing it to meet demand from its own catchment area. Accordingly, a catchment change with Frogston Primary School to take pressure off Gilmerton Primary School is not possible as Frogston does not have sufficient capacity.

Gracemount Primary School

- 2.8. Gracemount Primary School has capacity for 560 pupils and in 2023/24 had a roll of 454 pupils. Therefore, Gracemount Primary School currently has surplus capacity. However, new development in Gracemount Primary School's catchment area at Ellen's Glen Road and The Liberton Hospital site is planned to deliver 400 new homes. It is estimated that this, and other minor developments in the catchment area may generate a peak of up to 207 ND primary school pupils.
- 2.9. Gracemount Primary School's peak ND pupil population generated from existing homes was 471 in 2019. Accordingly, with a peak pupil generation of 471 ND pupils from existing housing and peak pupil generation of 207 pupils from new housing it is estimated that Gracemount Primary School's peak catchment population could reach 678 pupils. Not all of these pupils will choose to attend Gracemount Primary school or a school in the local area and demand for places at Gracemount Primary School is expected to peak at 542 pupils. This would leave only 18 spare places available.
- 2.10. Accordingly, in the long term, it is estimated that Gracemount Primary School will not have sufficient capacity to support pressure realigned from Gilmerton Primary School's catchment area.

Craigour Park Primary School

- 2.11. Craigour Park Primary School has capacity for 560 pupils (19 classes) and in 2023/24 had a roll of 450. However, the Local Development Plan shows the delivery of more than 1,000 new homes in Craigour Park Primary School's catchment area at Edmonstone and Moredunvale Road. These developments could generate more than 240 ND primary school pupils following their programmed completion in 2032.
- 2.12. These developments are in their early phases and the impact they have on Craigour Park Primary School's capacity will be monitored as they progress. Plans have previously been developed to extend Craigour Park to three streams (21 classes) and this may be necessary as pupils from new housing begin to attend the school.

2.13. In the long-term the scale of new development in Craigour Park Primary School’s catchment area may make it necessary to undertake catchment change with neighbouring schools such as Gilmerton Primary School or, should it be approved, the new school proposed in this paper.

Primary Schools Summary

2.14. Table 1 (below) summarises the current estimated pressures on each of the primary schools in the area. It illustrates that while primary school capacity currently exists in the wider Gilmerton and Gracemount area, it is anticipated that each school could come under pressure from new housing development within its own catchment area. It suggests that while Frogston and Gracemount Primary School’s will be able to meet the estimated demand for places from within their own catchment areas, Gilmerton Primary School will not. Accordingly, additional capacity is required.

2.15. The provision of additional capacity in the area may also provide an opportunity to address future issues at Craigour Park Primary School which may not be able to meet demand for places from within its own catchment area if housing developments progress as currently planned.

Table 1: Estimated impact of new housing on peak demand for primary school places

	Gilmerton	Gracemount	Frogston	Craigour Park
Historic Peak Catchment Population (exc. Housing)	360	471	354	564
Peak pupils estimated from housing built or planned after 2016	663	207	355	243
Total estimated future peak pupil population	1,023	678	709	807
Adjusted for Pupils Attending other Schools (variable)*	870	542	603	726
Current Capacity#	476	560	630	560
Estimated Places Available at Peak Demand	-394	18	27	-166

*based on 2018 % of pupils attending schools outside of Gracemount/Gilmerton area

#assumes 2 class TU at Gilmerton removed & expansion to 21 classes at Craigour

Secondary Schools

Liberton High School

Capacity

- 2.16. Liberton High School's feeder primary schools are Liberton Primary School, Craighour Park Primary School and Gilmerton Primary School. A map showing existing secondary school catchment areas can be found in [Appendix 2](#).
- 2.17. Liberton High School is currently being rebuilt and will have capacity for 1,200 pupils when the new building opens in 2026. Details of plans for the new school building can be found here: www.futureschoolsedinburgh.com/the-new-liberton-high-school/

Catchment Population

- 2.18. Approximately 3,200 of the 5,000 new homes being built in the wider area are built, or to be built, in Liberton High School's catchment area. This includes the homes around Gilmerton Station Road, Moredun, Edmonstone and Liberton Hospital.
- 2.19. In 2016/17 Liberton High School's current catchment area had a population of 1,038 pupils. By 2023/24 this had increased to 1,300 pupils (a 25% increase). 185 (14%) of these 1,300 pupils lived in a home built since 2016. The impact of new housing on secondary schools takes longer to appear than it does at primary level. Accordingly, new homes will continue to generate an increasing number of secondary pupils and further new housing which is in development will add to this. In total, it is estimated that new housing in Liberton High School's current catchment area could generate up to 597 secondary school pupils.
- 2.20. The number of pupils from Liberton High School's catchment population living in housing built *before* 2016 previously peaked at 1,256 pupils in 2003 and then again at 1,192 pupils in 2020.
- 2.21. When the 1,256 pupil peak from older housing is added to the 597 pupil peak estimated from new housing, peak demand for 1,853 secondary school places is estimated from Liberton High School's catchment area in future years. It is anticipated that around 75% of these pupils would choose to attend Liberton High School or Gracemount High School.
- 2.22. Accordingly, peak demand for secondary places from the Liberton High School's catchment area is estimated to be 1,390 pupils. With capacity for 1,200 pupils, Liberton High School does not have capacity to meet this demand, creating an estimated shortfall of 190 places in Liberton's catchment area.

- 2.23. There are no options to easily extend Liberton High School. Accordingly, catchment change is required to realign pupils with available capacity elsewhere.

Gracemount High School

Capacity

- 2.24. Gracemount High School's feeder primary schools are Gracemount Primary School, and Frogston Primary School. A map showing existing secondary school catchment areas can be found in [Appendix 2](#).
- 2.25. Gracemount High School currently has capacity for 847 pupils.

Catchment Population

- 2.26. Approximately 1,800 of the 5,000 new homes being built in the wider area are built, or to be built, in Gracemount High School's catchment area. This includes the homes at Frogston and Ellen's Glen and the Liberton Hospital.
- 2.27. In 2016/17 Gracemount High School's current catchment area had a population of 640 pupils. By 2023/24 this had increased to 773 pupils (a 21% increase). 144 (19%) of these 773 pupils lived in a home built since 2016. The impact of new housing on secondary schools takes longer to appear than it does at primary level. Accordingly, new homes will continue to generate an increasing number of secondary pupils and further new housing which is in development will add to this. In total, it is estimated that new housing in Gracemount High School's current catchment area could generate up to 374 secondary school pupils.
- 2.28. The number of pupils from Gracemount High School's catchment population living in housing built *before* 2016 previously peaked at 706 pupils in 2009.
- 2.29. When the 706 pupil peak from older housing is added to the 374 pupil peak estimated from new housing, peak demand for 1,080 secondary school places is estimated from Gracemount High School's catchment area in future years. It is anticipated that around 65% of these pupils would choose to attend Liberton High School or Gracemount High School.
- 2.30. Accordingly, peak demand for secondary places from Gracemount High School's catchment area is estimated to be 702 pupils. With capacity for 847 pupils, Gracemount High School has capacity to meet this demand with 145 places spare.

Secondary Schools Summary

- 2.31. Table 2 (below) illustrates that housing development in Liberton High School's catchment area is projected to cause Liberton High School to breach its new capacity. However, Gracemount High School does have some spare capacity

and a catchment change to realign some of Liberton High School's catchment population with Gracemount High School is proposed.

Table 2: Estimated impact of new housing on peak demand for secondary school places

	Liberton HS	Gracemount HS
Historic Peak Catchment Population (exc. Housing)	1,256	706
Peak pupils estimated from housing built or planned after 2016	597	374
Total Estimated Future Peak Pupil Population	1,853	1,080
Adjusted for Pupils Attending other Schools (variable)*	1390	702
School Capacity	1,200	847
Secondary Shortfall	190	-145

*based on 2023, approx 65% of pupils from Liberton and Gracemount catchments attend schools outside area. Adjusted to 75% for new school factor.

Pre-Consultation Engagement

- 2.32. Informal engagement with Head Teachers, school representatives, local elected members and the wider communities was carried out between February and April 2024. A report detailing the engagement undertaken with the Gilmerton community can be found on the Council's consultation hub: www.edinburgh.gov.uk/gilmertonstationroad
- 2.33. Engagement demonstrated support for the proposal to build a new primary school.
- 2.34. The outcomes of this early engagement were [reported to the Education, Children and Families Committee on 11 June 2024](#). The Committee agreed that proposals to establish a catchment area for a new primary school at Gilmerton Station Road should be progressed to a statutory consultation.

3. Details of Proposal

Summary

- 3.1. The previous section of this paper illustrated why there is a requirement for additional primary school capacity in the wider Gilmerton and Gracemount area. New housing in Gilmerton Primary School's catchment area is estimated to create a shortfall of nearly 400 ND school places. This is the equivalent of a two stream (15 class) primary school. Further development in Craigour Park Primary School's catchment area may mean that additional capacity is required in future years.
- 3.2. Accordingly, the following actions are proposed:
- that a new two-stream (15 class) class non-denominational primary school and nursery classes be established within the Gilmerton Station Road housing development by August 2028 at the earliest;
 - that a catchment area for the new school as shown in [Appendix 3](#) be formed from the existing Gilmerton Primary School catchment area to include:
 - Gilmerton Station Road new housing development;
 - The land south of Gilmerton Station Road to the city bypass;
 - The Lasswade Road Housing development east of Lasswade Road;
 - The land east of Gilmerton Road from south of the railway path to the city bypass
 - The land west of Lasswade Road between of Lang Loan and the city bypass
 - that the new primary school and its catchment area be aligned with Gracemount High School.
 - That the catchment areas of Gracemount High School and Liberton High School be amended as shown in [Appendix 4](#) to reflect the new primary school catchment areas.
 - that a sibling guarantee be offered with the wording to be reviewed and reported as part of the outcomes of the consultation.
- 3.3. This proposal will reduce the pressure on Gilmerton Primary School and create manageable pupil rolls at schools in the area including the new primary school in the Gilmerton Station Road development.

- 3.4. The new school would be designed so that it can be expanded to three streams (21 classes) in the future if it should prove necessary.
- 3.5. Catchment changes will only apply to new pupils entering P1 or S1. There would be no mandatory transfer for pupils already attending any other school.
- 3.6. The new primary school could open in August 2028 at the earliest. If the proposals in this paper are approved by the Council, the earliest date from when the proposed catchment area for the new school would be effective is November 2027, in time for the P1 and S1 registration process.
- 3.7. This paper does not propose any changes to the Roman Catholic Primary or Roman Catholic Secondary school catchment areas.

A New Primary School and Nursery

Site Location and Size

- 3.8. A site for a new primary school was identified through the Local Development Plan. The map below (Figure 1) shows where the new school would be built in the Gilmerton Station Road housing development. The new school site is between Nisbet Drive and Carter Drive.

Figure 1: Gilmerton Station Road New Housing Development and Proposed School Site



- 3.9. The proposed site is 2 hectares. This site size meets the requirements of the School Premises (General Requirements and Standards) (Scotland) Regulations 1967 and the 1973 and 1979 amendments to those regulations. It includes an area for school playing fields.

School Design

- 3.10. Detailed planning permission will be needed for the school building and grounds which will provide the community with further opportunities to comment on the design of the school.
- 3.11. The new school would be built to Passivhaus or equivalent standard. This means that it would have very efficient energy use and contribute to the Council's ambition to be a net-zero city.
- 3.12. The new school's name would be decided nearer to the school opening as part of a separate engagement with the school community.

Staffing for the New School

- 3.13. In addition to teaching and support staff, there would be a requirement to create and fill all the management and non-teaching staff positions associated with running a primary school. These positions would include a Head Teacher, a Business Manager, admin/clerical staff, dining room staff and janitorial staff.
- 3.14. The Head Teacher for the new school would be appointed at least six months before the new school opens. This would allow the Head Teacher to take time to appoint staff, oversee the completion and occupation of the building and establish relationships within the new school community. This would include forming a parent body and promoting the school to its potential users and community.

Early Years

- 3.15. In addition to primary classes, the school would include nursery classes in a purpose-built Early Learning and Childcare Centre (ELCC) offering pre-school spaces for children from 0-5 years old.

Capacity

- 3.16. The new school would be designed with 15 classrooms. This would accommodate up to 434 pupils.
- 3.17. The new school would be future-proofed by designing it so that its capacity can be increased if required in the future. This is necessary as the number of pupils that we think will be generated from new housing developments is only an estimate.

Populating the New School

- 3.18. If the proposals in this paper are approved, then the catchment area for the new primary school would apply from the start of the P1 registration process in November 2027 prior to the opening of the new school in August 2028.
- 3.19. Pupils already attending school before the P1 registration date would not be required to transfer to the new school.
- 3.20. Pupils eligible to start school in August 2028 and living within the catchment area of the new school when registrations opened in November 2027 would be expected to make a non-catchment placing request if they wished to attend a school other than their new catchment school.
- 3.21. If pupils in the new school's catchment have a sibling in the school they make a non-catchment placing request to, they will be given priority over other non-catchment placing requests.
- 3.22. All P1 to P6 pupils living in the catchment area of the new school in November 2027 could also apply for a place at the new school for the start of the school year in August 2028. However, classes in upper year groups will only be created if there is sufficient demand.
- 3.23. Standard processes for the placement of non-catchment pupils making a placing request to the new school for August 2028 would apply, however, places for catchment pupils would be reserved at each stage through the school year. The number of places to be reserved would be determined by a Working Group according to predicted housing completions for that year.

The New School's Catchment Area

- 3.24. The new school's catchment area would include the full extent of the Gilmerton Station Road housing development in which it would be located and the Lasswade Road housing development east of Lasswade road. A map of the new catchment area is shown in [Appendix 3](#). A list of the addresses affected by the proposal is contained in Appendix 5.
- 3.25. The map in [Appendix 3](#) showing the proposed catchment area of the new school, shows that some new housing would remain in Gilmerton Primary School's catchment area. The new housing west of Lasswade Road and Candlemaker's Park would remain in Gilmerton Primary School's catchment area. This is necessary to make use of existing capacity rather than building new that is not required. It also maintains a viable catchment population at Gilmerton Primary School.
- 3.26. Table (3) below shows the estimated impact of these proposed changes on primary schools in the area:

Table 3: Estimated impact of proposed catchment changes on peak demand for primary school places

	New School	Gilmerton	Gracemount	Frogston	Craigour Park
Historic Peak ND Catchment Population (exc. Housing)	0	360	471	354	564
Peak pupils estimated from housing built or planned after 2016	512	151	207	355	243
Total Estimated Future Peak Pupil Population	512	511	678	709	807
Adjusted for Pupils Attending other Schools (variable)*	461	434	542	603	726
Proposed School Capacity#	434	476	560	630	560
Primary Shortfall	-27	42	18	27	-166

*based on 2018 % of pupils attending schools outside of Gracemount/Gilmerton area

#assumes 2 class TU at Gilmerton removed & expansion to 21 classes at Craigour

3.27. Table 3 illustrates that it may be necessary to extend the new school in the future to meet demand from its own catchment area. It may also be necessary to extend the new school and undertake catchment review in the future to address Craigour Park's estimated shortfall in places. However, as the developments in Craigour Park's catchment are in very early phases and peak pupil generation is likely to be far beyond 2032, this requirement will be kept under review and any necessary actions delivered at the appropriate time.

Secondary Schools

3.28. It is proposed that the new primary school would feed to Gracemount High School. This would increase Gracemount High School's cluster from two to three primary schools. Gilmerton Primary School would continue to feed to Liberton High School.

3.29. The impact of the proposed changes is set out in Table 4 (below).

Table 4: Estimated impact of proposed catchment changes on peak demand for secondary school places

	Liberton HS	Gracemount HS
Historic Peak Catchment Population (exc. new Housing)	1,256	706
Peak pupils estimated from housing built or planned after 2016	256	715
Total Estimated Future Peak Pupil Population	1,512	1,421
Adjusted for Pupils Attending other Schools (variable)*	1134	924
School Capacity	1,200	847
Secondary Shortfall	-66	77

*based on 2023, approx 65% of pupils from Liberton and Gracemount catchments attend schools outside area. Adjusted to 75% for new school factor.

- 3.30. Table 4 illustrates that the changes proposed are likely to remove capacity concerns at Liberton HS. However, it is estimated that Gracemount High School may breach its capacity. This could be addressed through minor expansion of the school facilities. The requirement for this would be kept under review.
- 3.31. Should it be necessary to realign areas of Craigour Park Primary School's catchment with the proposed new primary school in future years, this may further necessitate expansion at Gracemount High School.

4. Educational Benefits

- 4.1. The principal educational advantage of the proposal is that it addresses future sufficiency issues at Gilmerton Primary School and Liberton High School and will enable the Council to continue to provide catchment school places for catchment children.
- 4.2. The proposals provide schools in the area with sustainable catchment populations that are appropriate to the capacity available. Accordingly, the proposals avoid over-occupancy at Gilmerton Primary School and Liberton High School which would otherwise place pressures on dining, social, support and classroom spaces within these schools. The proposals also provide the flexibility to address future capacity issues through the delivery of a developed expansion strategy.
- 4.3. The proposed catchments will allow teacher staffing levels and pupil numbers to be more sustainable and efficient in their distribution. Children will be able to learn within a variety of peer group opportunities.
- 4.4. The delivery of a solution to the accommodation pressures these new housing developments represent will also provide those moving into the new developments with some certainty about the schooling options available to them.
- 4.5. Pupils attending the proposed new school will experience a modern, state-of-the-art learning environment designed to be accessible to all, creating a sense of pride in the learners and staff alike and helping to build a positive ethos in the new school. The new environment will promote creative and engaging teaching approaches and offer facilities that will encourage health and wellbeing, participation in sport, and outdoor learning. The provision of nursery accommodation on the site would allow for a seamless progression in learning from nursery to P1.
- 4.6. The availability of a new, purpose-built facility including a gym hall and playing fields could also advantage the local community. The playing area would present an opportunity for the school to deliver an enhanced sports curriculum and benefit from access to green space.
- 4.7. The principal educational disadvantage of the proposal is that while every effort has been made to ensure that all pupils catchment school is the school closest to where they live, it has not been possible to achieve this in all instances. At secondary level in particular, some pupils may find that they travel close to Gracemount High School on their way to Liberton High School. While not ideal, this was necessary to ensure sustainable distribution of the pupil population and consistency with the underlying primary school catchment areas.

5. Financial Considerations

Capital Works Required

- 5.1. Costs estimates based on the Council's feasibility studies indicate that the school would cost in the region of £35.0m. These costs are based on the fourth quarter of 2023 and inflation included to mid construction and exclude site acquisition and remediation.
- 5.2. It is anticipated that the school would be funded from developers' contributions. There would be a requirement for the Council to front fund this investment and recoup the cost as contributions are made.

Revenue Costs

- 5.3. A new primary school would lead to an increase in revenue costs. This is because, in addition to the additional teaching and support staff, there would be a requirement to create and fill all the management and non-teaching staff positions associated with running a separate primary school. These positions would include a Head Teacher, a Business Manager, admin/clerical staff, dining room staff and janitorial staff.
- 5.4. The creation of a new school building would also result in additional building running, maintenance, and repair costs for the school estate.
- 5.5. The estimated additional revenue costs are set out in Table 1 (below). These figures include an estimated average annual repair spend based on BCIS standard rates. The maintenance burden for the new building is likely to be low in the short to medium term but would increase over time.

Table 1: Annual Revenue Cost Summary

Estimated Additional Staffing Costs (based on 2024/25 salary levels)	Teaching Staff	£1,346,819
	Non-teaching staff	£1,166,783
	Non-staffing	£36,863
	Staffing Total	£2,550,465
Estimated Additional Premises Costs (based on BCIS standard rates)	<i>Includes: Rates & Services; Utilities. Repairs & Maintenance</i> Premises Cost Total	£327,050
Estimated Additional Revenue Costs	£2,877,515	

Funding

- 5.6. The financial implications on future capital and revenue budgets of the adopted LDP Action Programme, which includes the proposed new school, were reported to the Finance and Resources Committee on [1 February 2019](#). This report identifies the risks associated with securing developer's contributions for LDP education infrastructure and requested that the initial budgets required to progress this new school project are established in the Capital Investment Programme through the Council's budget setting process.

- 5.7. Should this consultation lead to a commitment to a new school on the site proposed, a Business Case would be developed for this project. The Business Case would be presented to the appropriate Council Committees once finalised to seek approval for any additional capital funding necessary to be identified in the Council's the Capital Investment Programme.

6. Indicative Timescales

- 6.1. The timescales for the delivery of the new primary school at the Gilmerton Station Road site are dependent on the necessary funding being approved and provided to deliver the project.
- 6.2. Table 2 (below) sets out the indicative design and construction timescale, based on an assumed date of initiation after Council approval on 19 December 2024. This timescale is subject to the site being available prior to the start of construction.

Table 2: Indicative Construction Timescales

Conclusion of consultation and approval of solution to be progressed	January 2025
Complete Design Development to RIBA Stage 2	July 2025
Complete Design Development to RIBA Stage 3 (Planning)	December 2025
Complete Design Development to RIBA Stage 4 and planning	August 2026
Complete construction contract tender process and award contract	November 2026
Mobilisation	January 2027
Complete Construction RIBA Stage 5: Construction	June 2028
Estimated Opening Date	August 2028

7. Consultation Process

- 7.1. The Schools (Consultation) (Scotland) Act 2010, as amended by the Children and Young People (Scotland) Act 2014, sets out the statutory consultation requirements for:
- The establishment of a new school;
 - The relocation of a stage of education;
 - Changes to existing admission arrangements (such as catchment change); and
 - The closure of a stage of education.
- 7.2. The prescribed consultees vary for each of the above. Although a closure is not proposed, the requirement for a closure encompasses all the necessary consultees and it is this process that will be followed to ensure full compliance with all the requirements of the Act. Accordingly, consultees will be as follows (where relevant):
- the Parent Council of any affected school;
 - the parents of the pupils at any affected school;
 - the parents of any children expected to attend any affected school within two years of the date of publication of the proposal paper;
 - the pupils at any affected school (in so far as the education authority considers them to be of a suitable age and maturity);
 - the staff (teaching and other) at any affected school;
 - any trade union which appears to the education authority to be representative of the staff (teaching and other) at any affected school;
 - the community councils (if any);
 - the Roman Catholic Church;
 - any other education authority that the education authority considers relevant;
 - any other users of any affected school that the education authority considers relevant.
- 7.3. The extent of the consultation with pupils at the affected schools and the appropriate means of engaging with those pupils will be discussed in detail with each school's management team.
- 7.4. The consultation period will run for a 6-week (excluding midterm holidays) period from **Thursday 22 August 2024 to Thursday 3 October 2024**. This consultation paper will be made available electronically and is also available in paper format on request or at the Council Offices at City Chambers and

Waverley Court, Gilmerton Library, South East Locality Office and at the schools affected by the proposals.

- 7.5. Two public meetings will be held in respect of the proposal which will give interested parties a more formal opportunity to express their views. Representatives of the Council will be present at the meeting to outline the proposals, assist discussions and answer questions. The Council will take a record of each public meeting.

Date	Time	Venue
Thursday, 12 September 2024	18:30 – 20:30	Gilmerton Primary School
Wednesday, 18 September 2024	18:30 – 20:30	Gracemount High School

- 7.6. All comments received will be recorded and represented in the final report regarding the outcomes of the consultation, along with the Council's response to those comments. Individual responses will not be provided to submissions made during the consultation.
- 7.7. Further information and an online questionnaire for feedback are available at: www.edinburgh.gov.uk/gilmertonstationroad
- 7.8. A copy of the response questionnaire is provided in [Appendix 5](#). The response questionnaire can also be submitted by email to: newgilmertonstationroadprimary@edinburgh.gov.uk

or posted to the following address:

Strategic Asset Planning (New Gilmerton Station Road)
Business Centre 1.6
The City of Edinburgh Council
Waverley Court
4 East Market Street
Edinburgh, EH8 8BG

- 7.9. All responses, whether by letter, e-mail or using the online questionnaire should be received by **no later than end of Thursday 3 October 2024**.
- 7.10. Once the public consultation phase finishes, details of the representations received will be issued to Education Scotland for their consideration of the educational effects of the proposals. Education Scotland will issue a report on their findings which will be included in the final Council report on the consultation.
- 7.11. Following the conclusion of the consultation period and after consideration of the representations received and the views of Education Scotland on the educational benefits of the proposal, a report on the Outcomes of the Consultation will be presented to the committee for consideration. The report will be made publicly available, and notification will be given to those individuals or groups that have made representations during the consultation period. The report will include a summary of written representations received

during the consultation period and representations made at the public meeting along with the Council response to representations made and to any issues raised by Education Scotland.

- 7.12. It is anticipated that the consultation report, setting out recommendations, will be presented to a Meeting of the Council on 19 December 2024. The report will be published three weeks in advance of the Council meeting.

8. Appendices

Appendix 1 – Map of Existing Primary School (Non-denominational) Catchment Areas in the South East Edinburgh

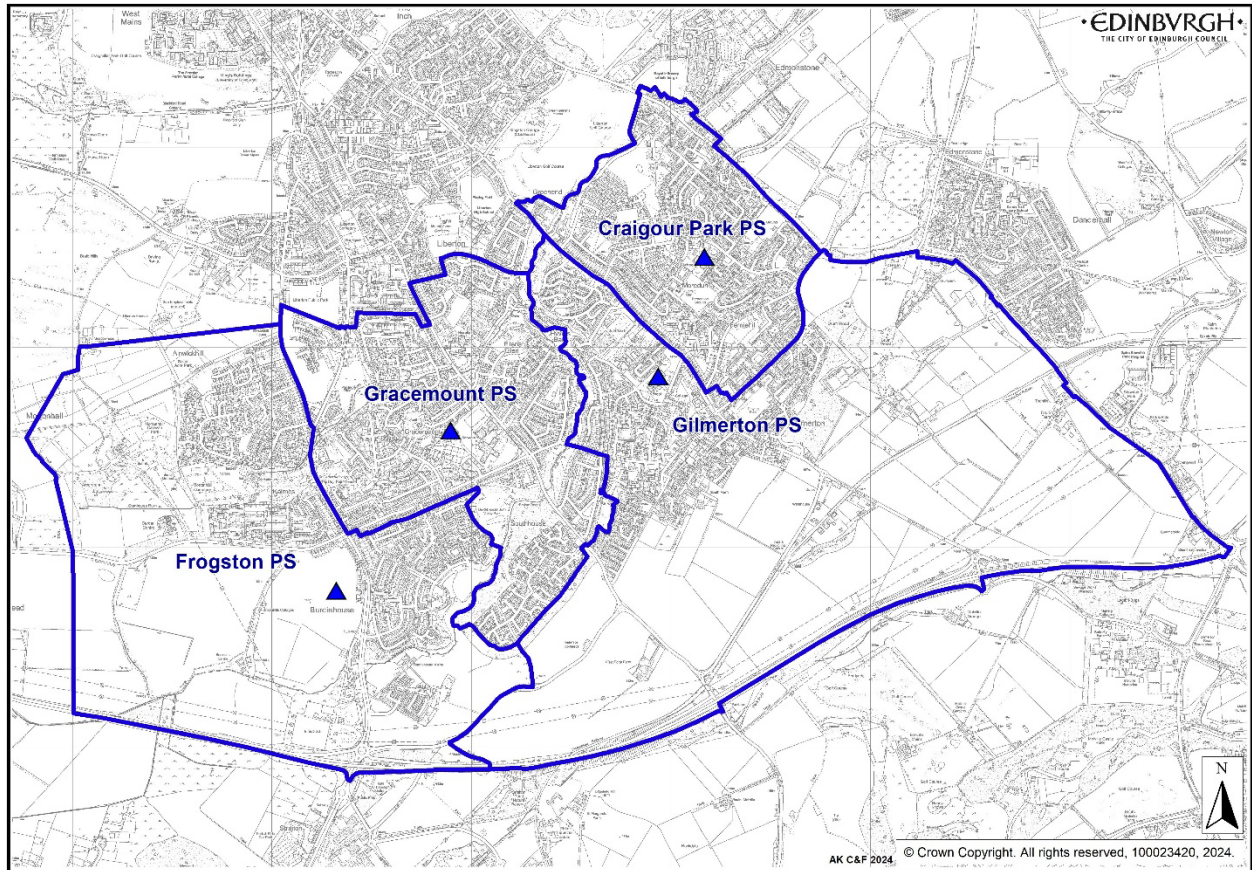
Appendix 2 – Map of Existing Secondary School (Non-denominational) Catchment Areas in South East Edinburgh

Appendix 3 – Map of Proposed Primary School (Non-denominational) Catchment Areas in South East Edinburgh

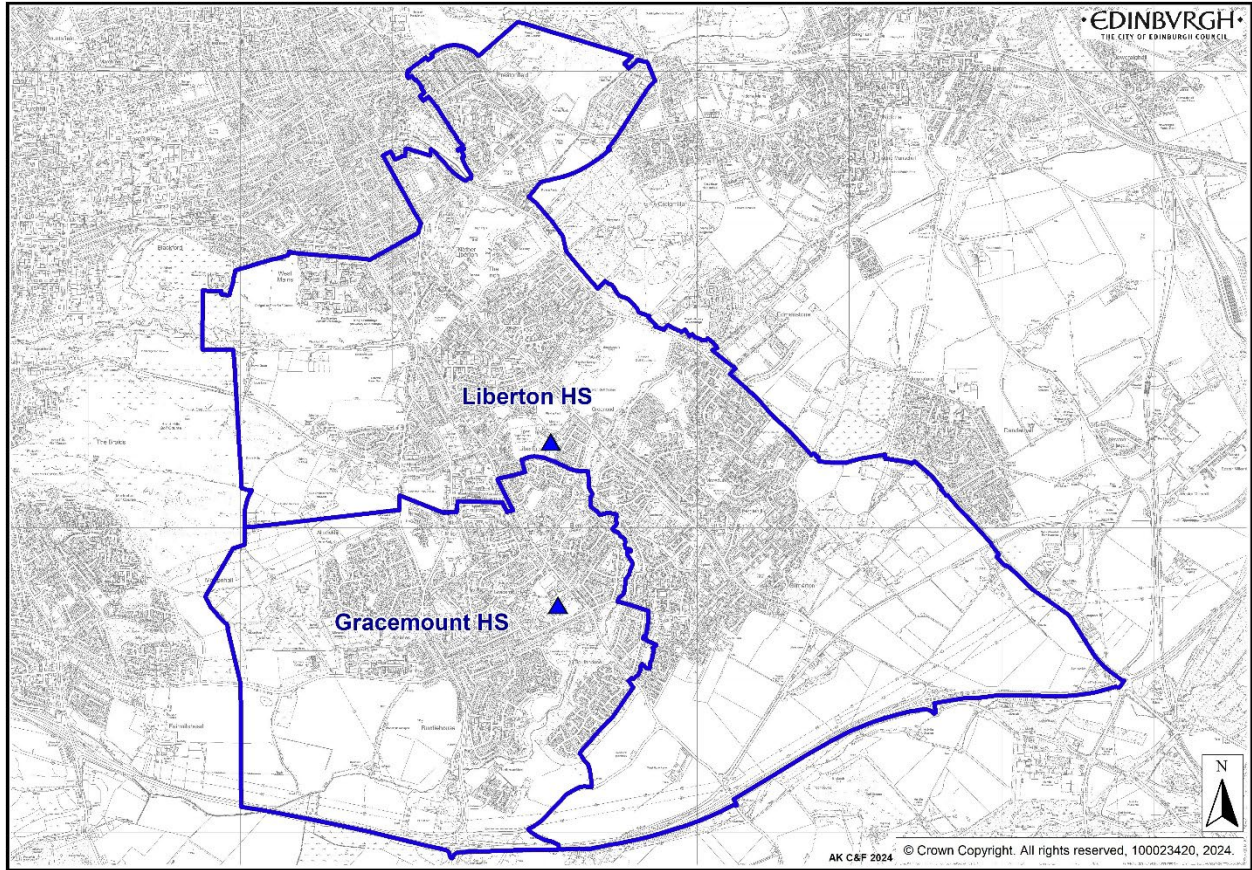
Appendix 4 – Map of Proposed Secondary School (Non-denominational) Catchment Areas in South East Edinburgh

Appendix 5 – Response Questionnaire

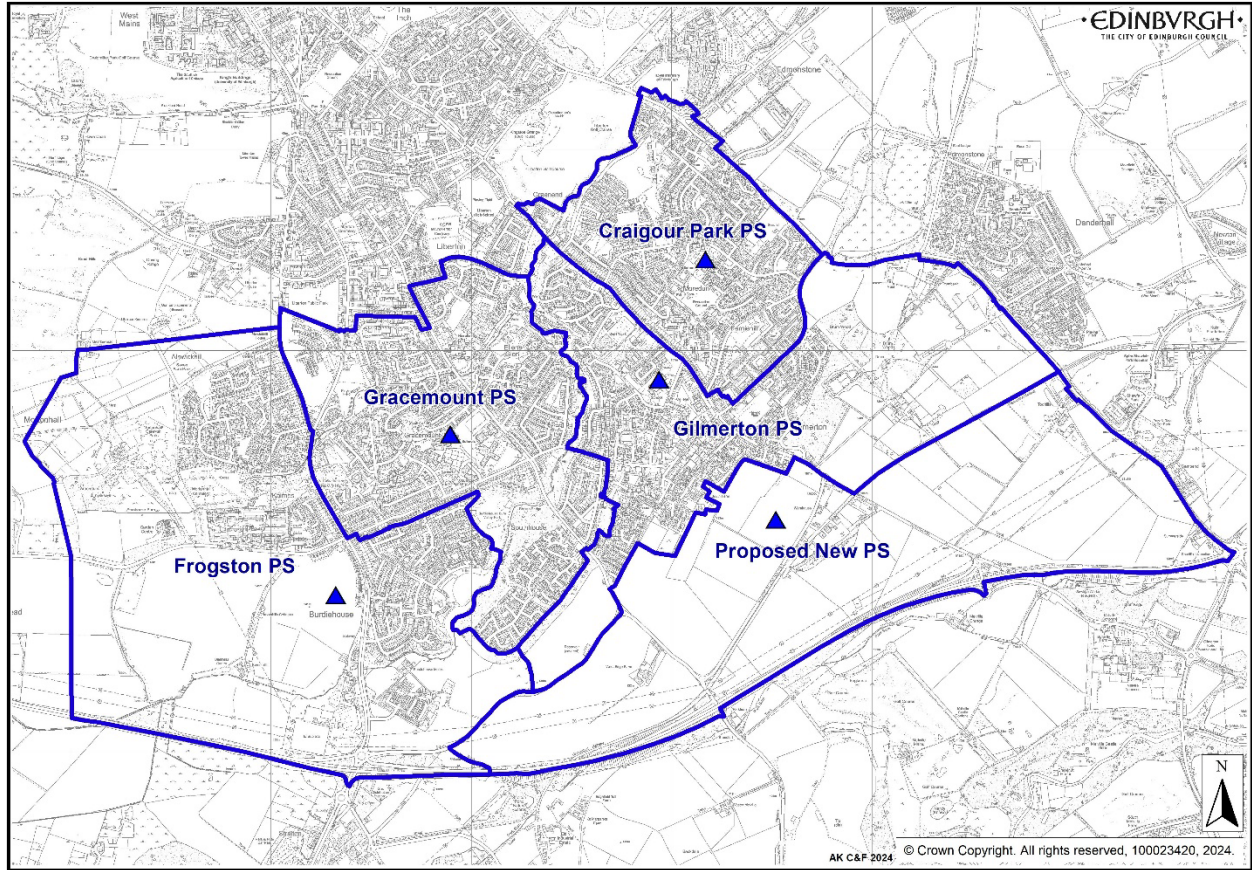
APPENDIX 1 – Map of Existing Primary School (Non-denominational) Catchment Areas in the South East Edinburgh



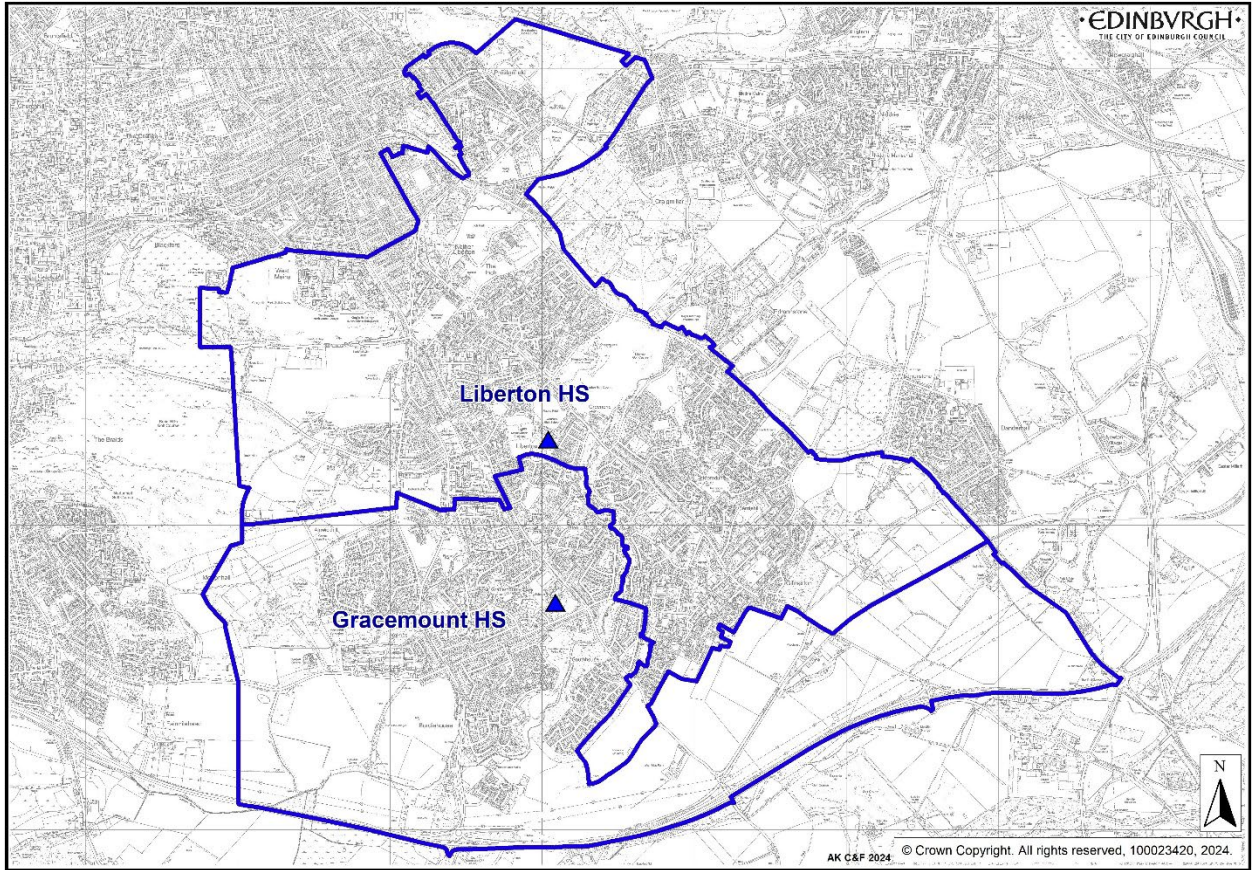
**APPENDIX 2 – Map of Existing Secondary School (Non-denominational)
Catchment Areas in South East Edinburgh**



**APPENDIX 3 – Map of Proposed Primary School (Non-denominational)
Catchment Areas in South East Edinburgh**



**APPENDIX 4 – Map of Proposed Secondary School (Non-denominational)
Catchment Areas in South East Edinburgh**



APPENDIX 5 – Response Questionnaire

Statutory Consultation Proposing to Establish a New Non-Denominational Primary School and Implement Catchment Changes in South East Edinburgh

Introduction

Significant housing development has taken place in the South East of the city and more development is expected by 2032. As school roll projections show that the additional pupils from the new housing will lead to school accommodation pressures, it is necessary to progress a statutory consultation in order that a new primary school in the area can be delivered. A site within the Gilmerton Station Road housing development has been identified. A catchment area for the new primary school is proposed which would result in changes to the catchment areas of Gilmerton Primary School, Liberton High School and Gracemount High School.

The full details of the proposal are available in the statutory consultation paper which you should read before completing this questionnaire. The statutory consultation paper is available online at www.edinburgh.gov.uk/gilmertonstationroad and copies are available at the Council Offices at City Chambers and Waverley Court, at Gilmerton Library, at the Council's South East Neighbourhood office and at the schools affected by the proposals.

Why we are consulting?

The Council has a legal obligation to conduct a statutory consultation under the Schools (Consultation) (Scotland) Act 2010 as amended by the Children and Young People (Scotland) Act 2014. The proposal put forward will have implications for families and we want to hear the views of anyone affected. All comments made during the statutory consultation period will be recorded and represented in a final report anticipated to be considered by Council on 19 December 2024.

This questionnaire should be completed and returned by no later than 11.59 pm on Thursday 3 October 2024. All personal information in the questionnaire is for internal use only and will not be made public however the responses to questions 6 and 7 may be reflected either in whole, or in part, in the report to Council but on an anonymised basis. The questionnaire can be completed online at the following link www.edinburgh.gov.uk/gilmertonstationroad or can be completed in the following pages and returned to the following address:

Strategic Asset Planning (New Gilmerton Station Road)
Business Centre 1.6
The City of Edinburgh Council
Waverley Court
4 East Market Street
Edinburgh, EH8 8BG

Responses can also be made in writing to the address above or by e-mail to the following address: newgilmertonstationroadprimary@edinburgh.gov.uk

Why we need this information and how it will be used?

The Council uses this information to ensure responses to consultations are genuine and that each person is submitting only one response.

The Council will publish all responses received to this consultation, but will not publish individual names, email addresses or postcodes. We will publish the names of organisations.

We will use your email address to contact you to let you know the results of this consultation and the actions we are taking because of the consultation.

Question 1

What is your name?

Name

Question 2

What is your email address?

Email

Question 3

What is your postcode?

Postcode

Question 4

What is your main interest in the consultation?

Please select (tick) all items that apply:

- Parent/Carer of school child
- Parent/Carer of school child with younger sibling/s
- Parent/Carer of pre-school child
- School Staff
- Pupil
- Local resident
- Local organisation
- Other

If you are answering on behalf of an organisation, or for other reasons, please explain below.

Question 5

Do you have a child or children in a nursery or school?

Please select (tick) only one item.

Yes

No

If yes, please tell us the name(s) of their school or nursery classes.

Gilmerton Primary School

Gilmerton Primary School Nursery Class

Gracemount Primary School

Gracemount Primary School Nursery Class

Frogston Primary School

Frogston Primary School Nursery Class

Craigour Park Primary School

Craigour Park Primary School Nursery Class

Gilmerton Early Years Centre

Liberton High School

Gracemount High School

Other(s) - Please specify below

Question 6

Do you support the proposal as detailed in the statutory consultation paper?

Please select (tick) only one item.

Strongly support

Support

Neither support nor object

Object

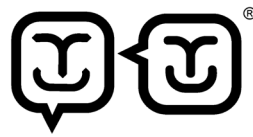
Strongly object

Please give your reasons below:

Question 7

Do you have any other comments or suggestions?

Comments or suggestions can also be emailed to:
newgilmertonstationroadprimary@edinburgh.gov.uk



HAPPY TO **TRANSLATE**

You can get this document on audio CD, in Braille, large print if you ask us. Please contact Interpretation and Translation Service (ITS) on its@edinburgh.gov.uk and quote reference number **24-1177**. ITS can also give information on community language translations. You can get more copies of this document by contacting newgilmertonstationroadprimary@edinburgh.gov.uk.

