

Consultation on the Proposal to Establish a New Non-Denominational Primary School and Implement Catchment Changes in South East Edinburgh

Summary Paper

GIVE US YOUR VIEWS: www.edinburgh.gov.uk/gilmertonstationroad

What is being proposed?

The establishment of a new non-denominational primary school and nursery within the Gilmerton Station Road housing development in South East Edinburgh. The new school would feed to Gracemount High School.

A catchment area for the new school is also proposed. Maps of existing and proposed primary school catchments are attached as [Appendix 1](#).

Where will the new primary school and nursery be located?

It is proposed that the new school will be built on a 2 hectare site within the Gilmerton Station Road housing development. This site is located between Nisbet Drive and Carter Drive. The map in [Appendix 3](#) shows the proposed school location.

Why do we need a new primary school?

New housing in Gilmerton Primary School's catchment area is estimated to create a shortfall of nearly 400 non-denominational school places. This is the equivalent of a two stream (15 class) primary school.

What are the implications for existing secondary schools?

Liberton High School is currently being rebuilt with an increased capacity. However, housing development in Liberton High School's catchment area is projected to cause Liberton High School to breach its new capacity. Gracemount High School does have some spare capacity and a catchment change to realign some of Liberton High School's catchment population with Gracemount High School is proposed.

The new primary school will feed to Gracemount High School. This requires a change to the catchment boundaries of Liberton High School and Gracemount High School. Maps of existing and proposed secondary school catchments are attached as [Appendix 2](#).

Who will the changes affect?

The catchment changes will affect P1 and S1 pupils starting school in August 2028 and pupils moving to the area after August 2028.

When would the changes come into effect?

If the proposal is approved by the Council, the new school could open in August 2028 at the earliest. The catchment changes would be made in the November prior to the new primary school opening.

Why are we consulting?

We want to hear the views of anyone affected by the proposal. There is also a legal obligation to carry out a statutory consultation under the Schools (Consultation) (Scotland) Act 2010 as amended by the Children and Young people (Scotland) Act 2014.

How will I know if my views have been considered?

All comments made during the statutory consultation period will be recorded and represented in a final 'Outcomes of the Consultation Report' that we expect to be considered by Council in December 2024. The report will be published three weeks in advance of the Council meeting and parents of pupils attending affected schools and anyone who has responded to the consultation will be notified of its publication.

How can I find out more about the proposal or make my views heard?

If you want more information you can find the full consultation paper and other supporting information at www.edinburgh.gov.uk/gilmertonstationroad

We have also organised two public meetings which anyone can attend:

Date	Time	Venue
Thursday, 12 September 2024	18:30 – 20:30	Gilmerton Primary School
Wednesday, 18 September 2024	18:30 – 20:30	Gracemount High School

The meeting will open with a short presentation about the consultation and what is proposed, followed by a question and answer session. We will take a note of the meeting and all of the points made will be captured in the final 'Outcomes of the Consultation Report'.

Please email newgilmertonstationroadprimary@edinburgh.gov.uk by Friday 6 September 2024 if you need translation services at the meeting.

Give us your views: public consultation period closes Thursday 3 October 2024

It would be helpful if you could take time to complete our short survey – you can find it easily online at www.edinburgh.gov.uk/gilmertonstationroad. If you don't have internet access then you can view the full consultation paper at City Chambers, Waverley Court, Gilmerton library or any of the affected schools.

You can also email comments to us directly at:
newgilmertonstationroadprimary@edinburgh.gov.uk

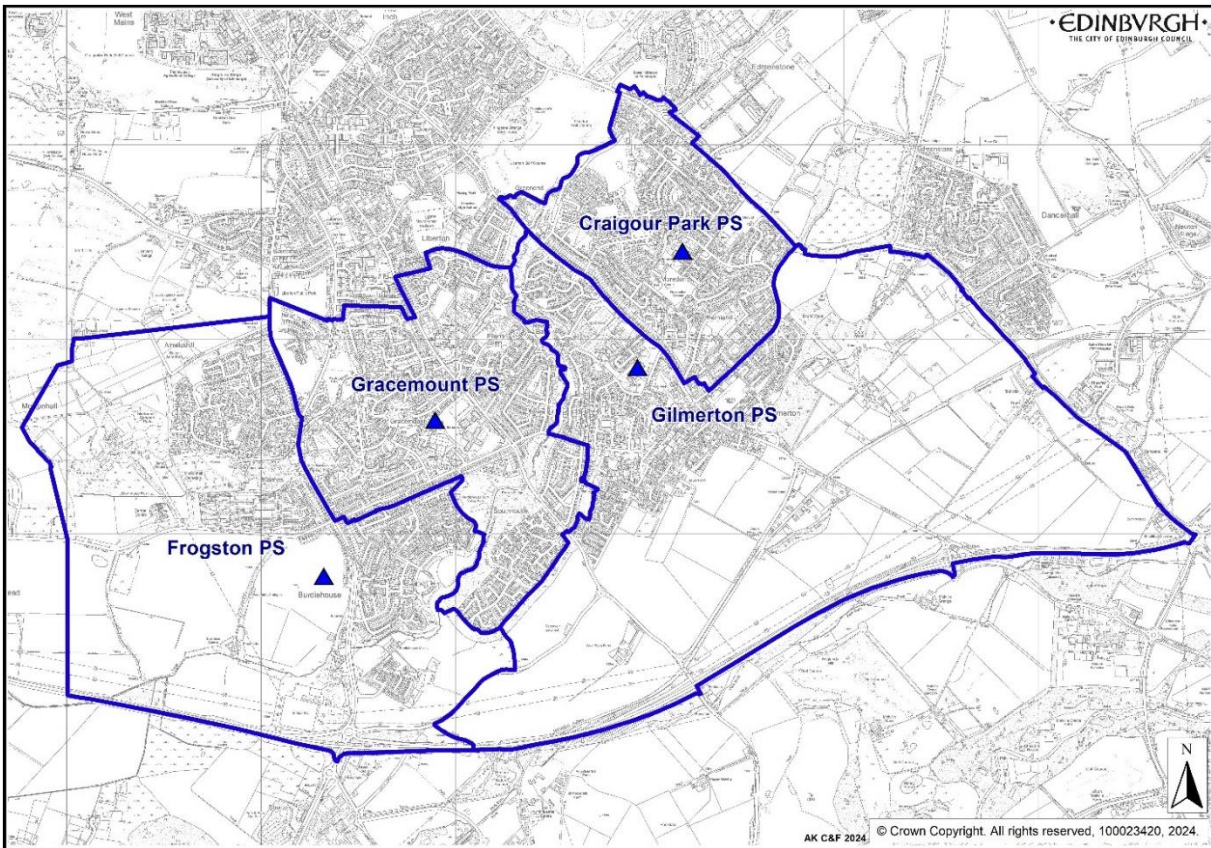
or if you prefer they can be posted to:

Gilmerton Station Road Primary School Consultation
City of Edinburgh Council
Waverley Court,1.6
4 East Market Street
Edinburgh EH8 8BG

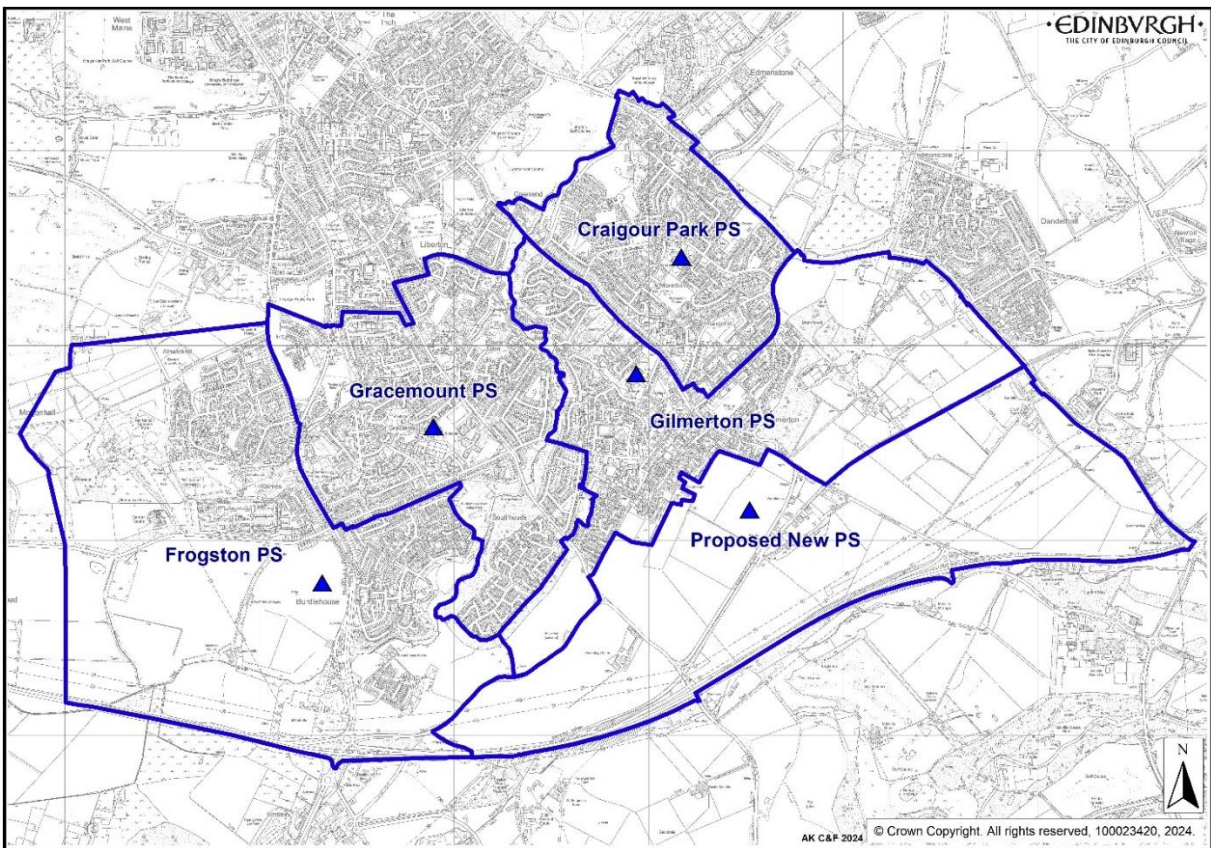
All comments should arrive by Thursday 3 October 2024.

APPENDIX 1: Existing and Proposed Catchment Boundaries

Existing Primary School Catchment Boundaries

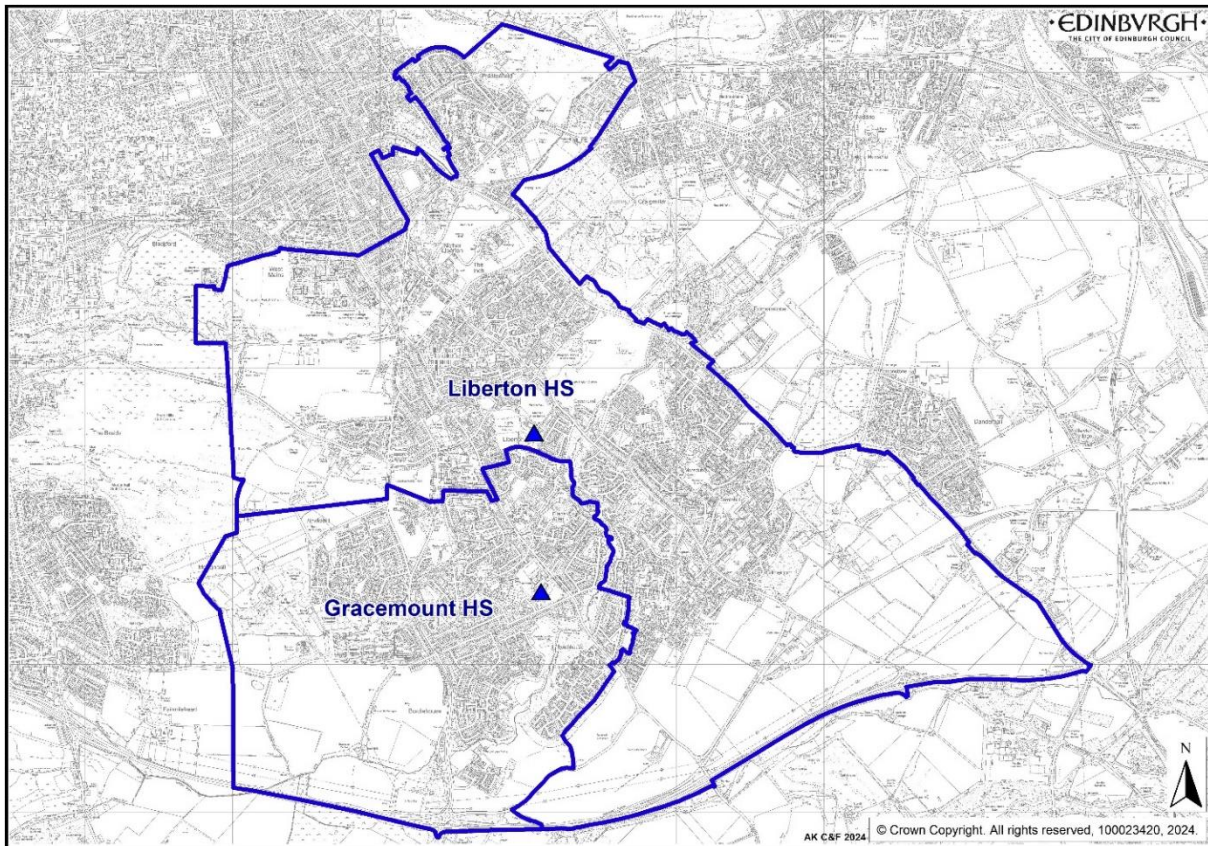


Proposed Primary School Catchment Boundaries

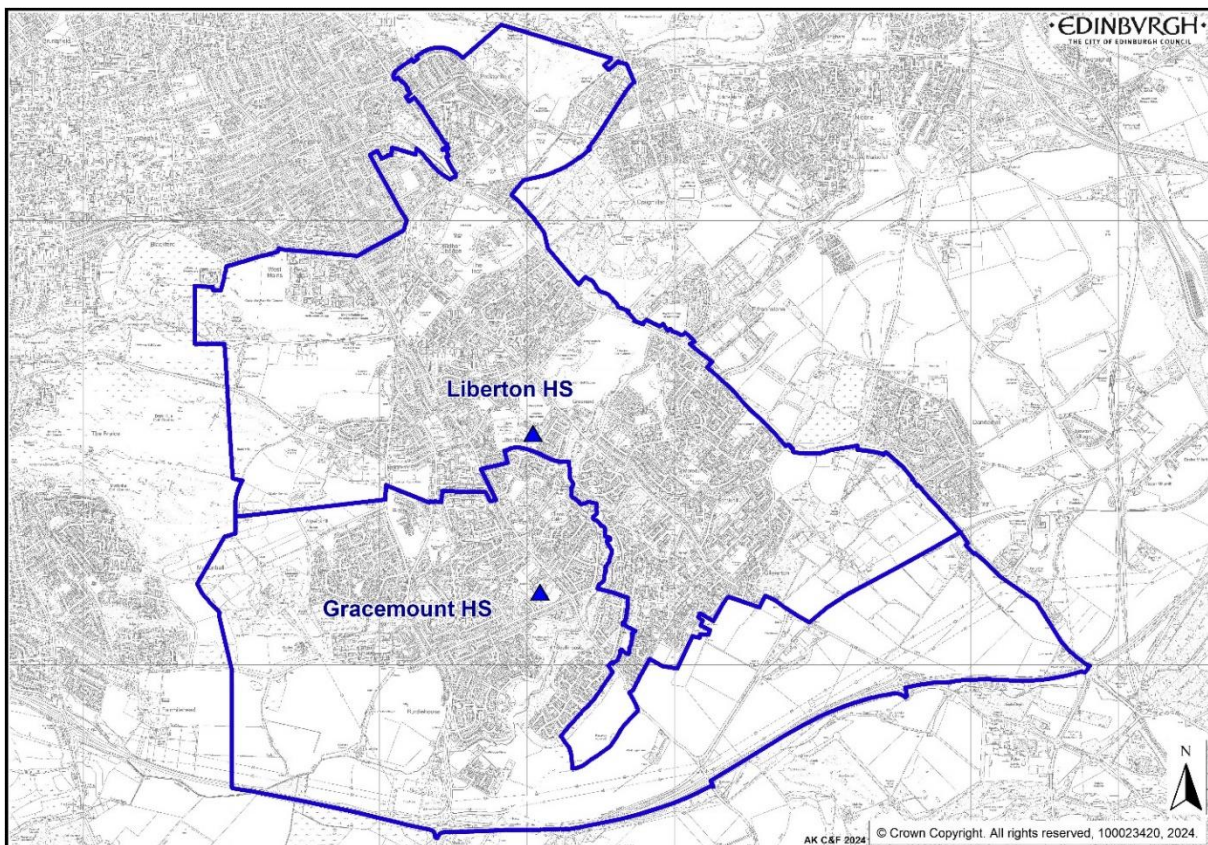


APPENDIX 2: Existing and Proposed Secondary School Catchment Boundaries

Existing Secondary School Catchment Boundaries



Proposed Secondary School Catchment Boundaries



APPENDIX 3: Proposed New Primary School Site (indicated by white rectangle)



HAPPY TO **TRANSLATE**

You can get this document on audio CD, in Braille, large print if you ask us. Please contact Interpretation and Translation Service (ITS) on its@edinburgh.gov.uk and quote reference number **24-1177C**. ITS can also give information on community language translations. You can get more copies of this document by contacting newgilmertonstationroadprimary@edinburgh.gov.uk

