

Site Location



Key:

Victoria Park Conservation Area

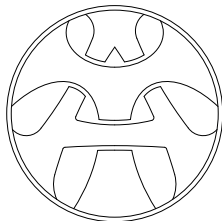
Site Boundary

Bangholm Sports & Outdoor Centre

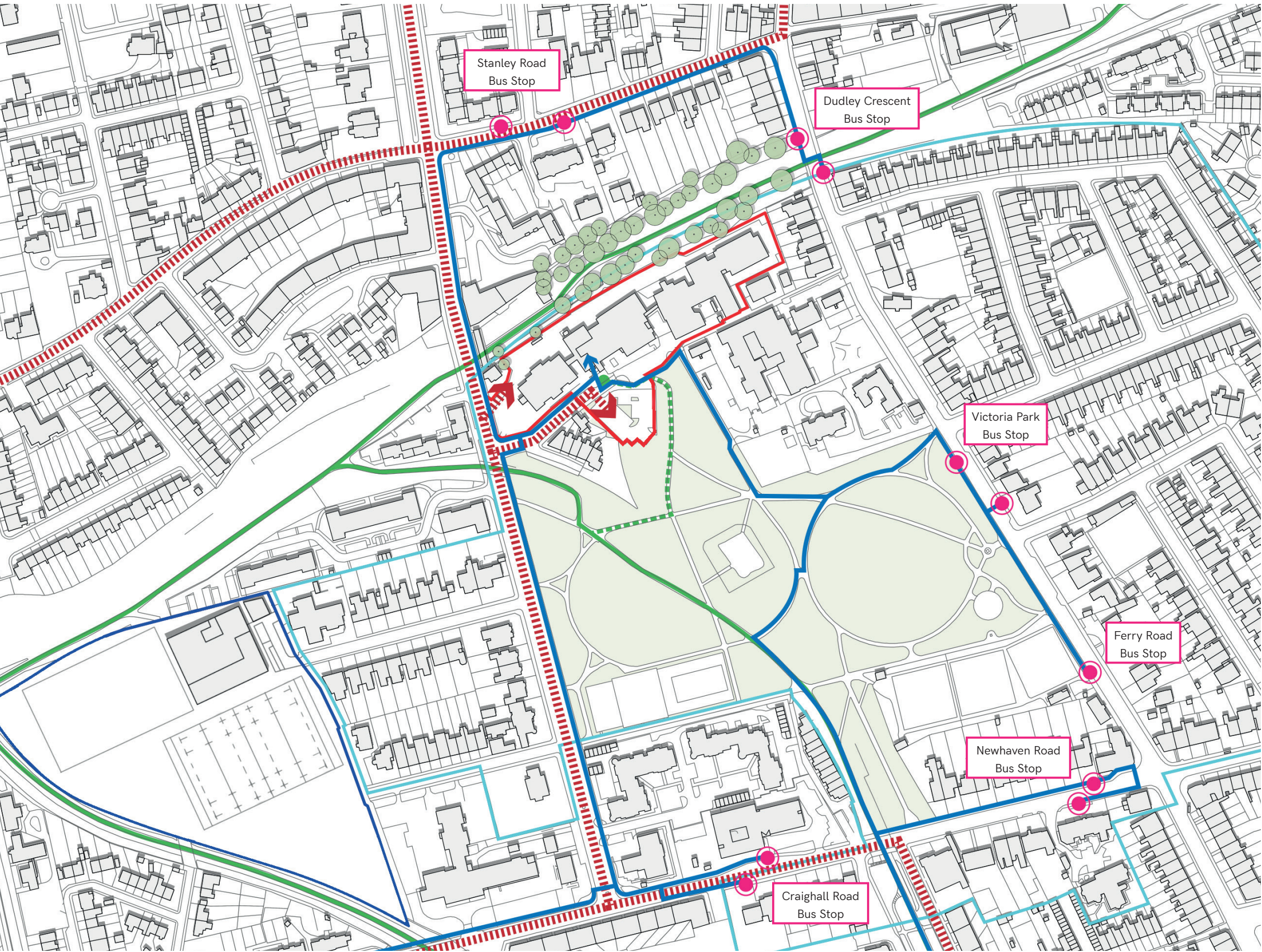
- ① Trinity Academy
- ② Trinity Primary school
- ③ Bangholm Outdoor Centre
- ④ Victoria Park
- ⑤ Victoria Basketball & Tennis Courts
- ⑥ Craighall Day Centre
- ⑦ Garden Allotments
- ⑧ Bowling Green
- ⑨ Holy Cross RC Primary School
- ⑩ Holy Cross Church
- ⑪ Summerside Bowling Club

Trinity Academy is located directly north of Victoria Park within the Victoria Park Conservation Area. The local context is primarily residential in nature with local amenities such as the public park, sports facilities (tennis courts, bowling greens, hockey and rugby pitches) as well as allotments.

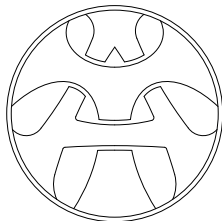
The Bangholm Sports & Outdoor Centre is linked to Trinity Academy, providing indoor and outdoor sports facilities to the school and the local area.



Site Connections



- Key:
- Site Boundary
 - Victoria Park Conservation Area Boundary
 - Bangholm Recreational Ground
 - Cycling and Pedestrian Routes
 - Vehicular Routes
 - Pedestrian Routes
 - Bus Stop



Photographic Analysis



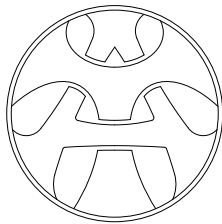
Site Boundary

This page gives examples of the context of Trinity Academy. The local area is very green with an abundance of trees, the built environment is predominately a mix of Victorian residential properties (mainly terrace housing) built-in blonde & red sandstone and 1990s/2000s flatted developments in a faux-vernacular style in white render with cast stone detailing.

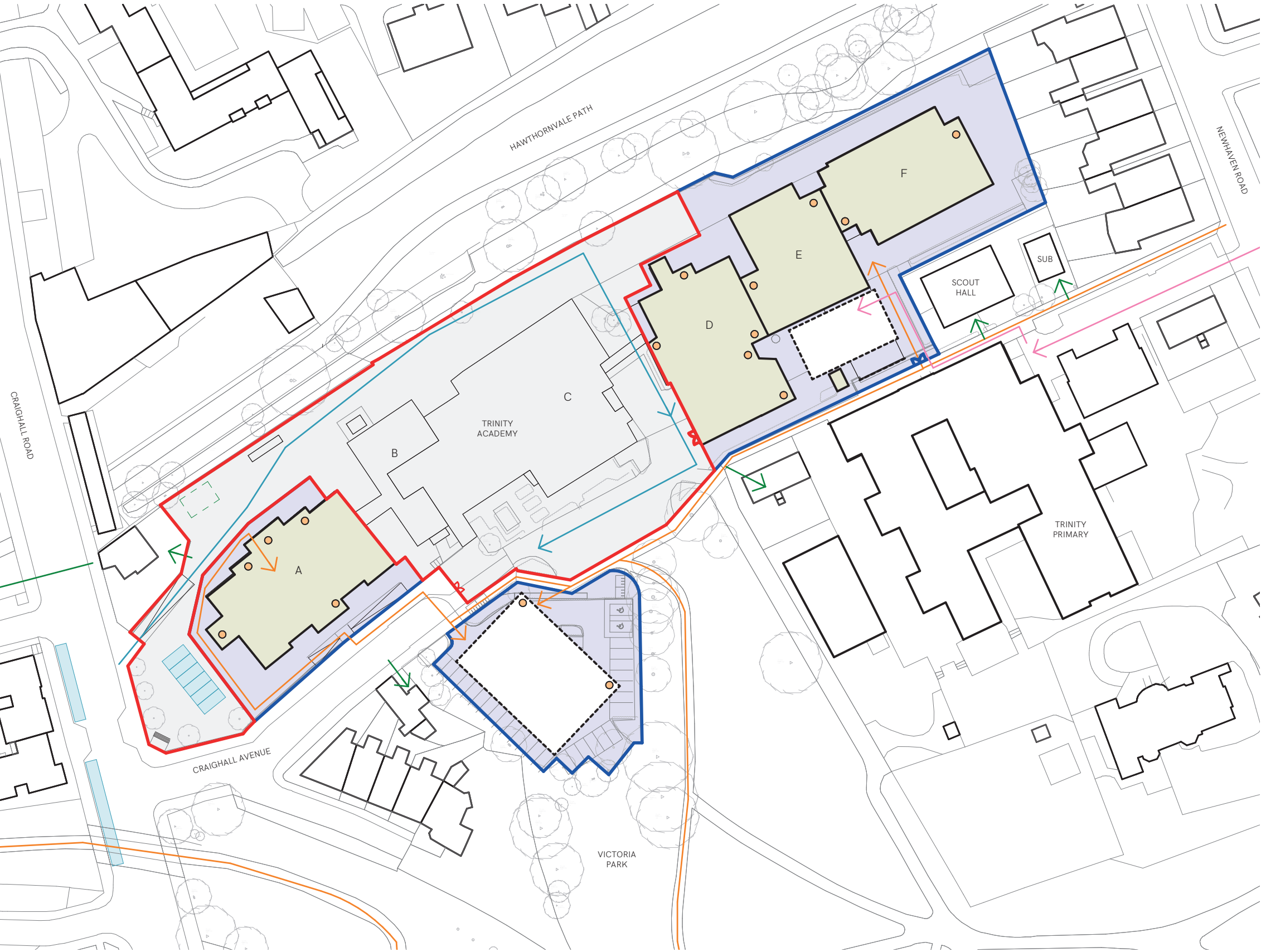
Trinity Academy's extensions are the only concrete & red brick buildings within the immediate area.



- 1. Looking east along Craighall Avenue
- 2. The listed Victorian building from Craighall Road
- 3. Existing car park
- 4. Traditional blonde sandstone terrace housing on Craighall Bank
- 5. Looking north along Craighall Road
- 6. Looking south towards the site, retail buildings obscuring views of the school

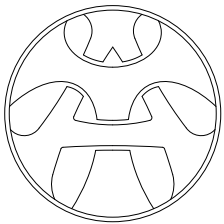


Site Decant Strategy

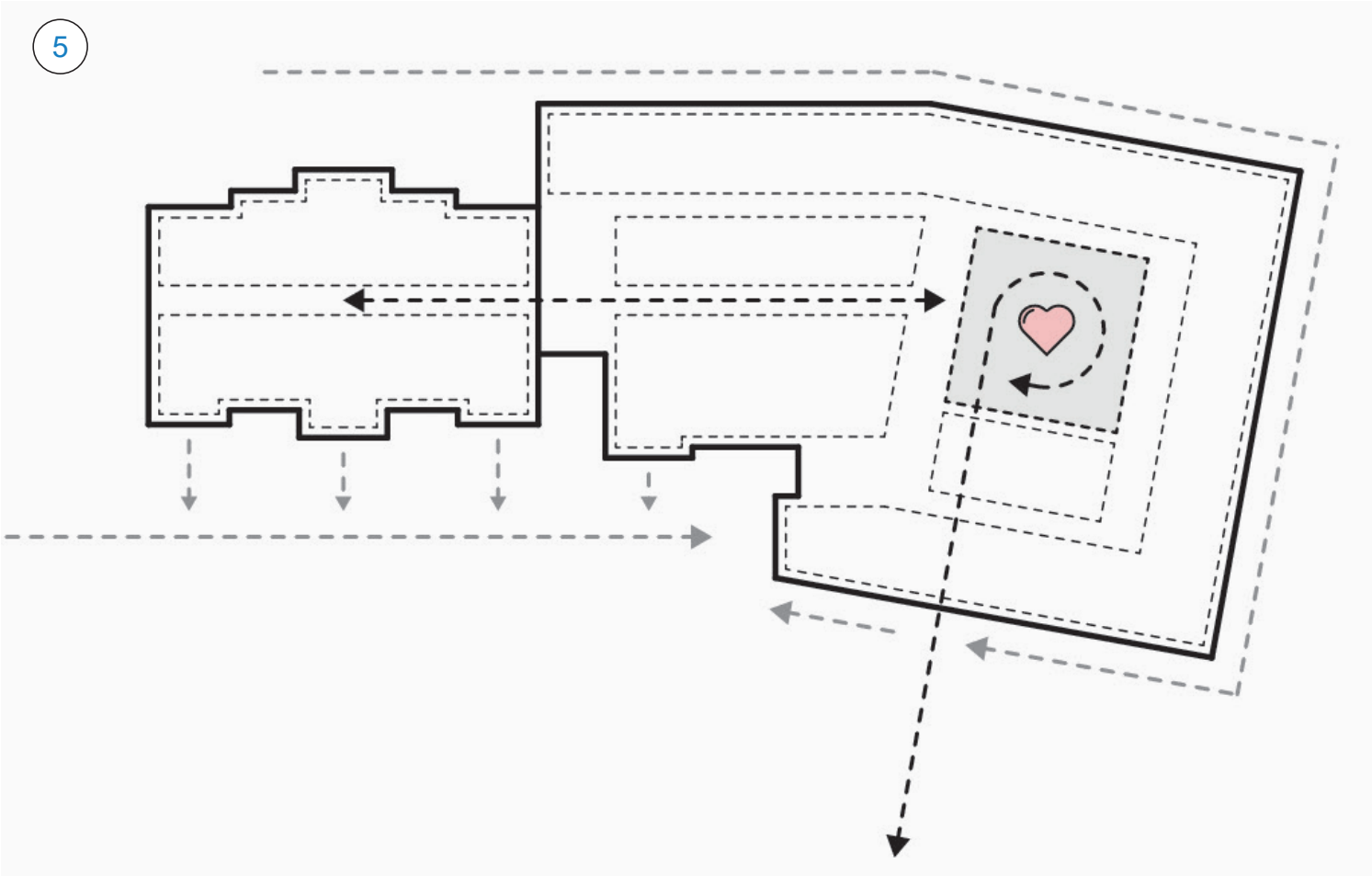
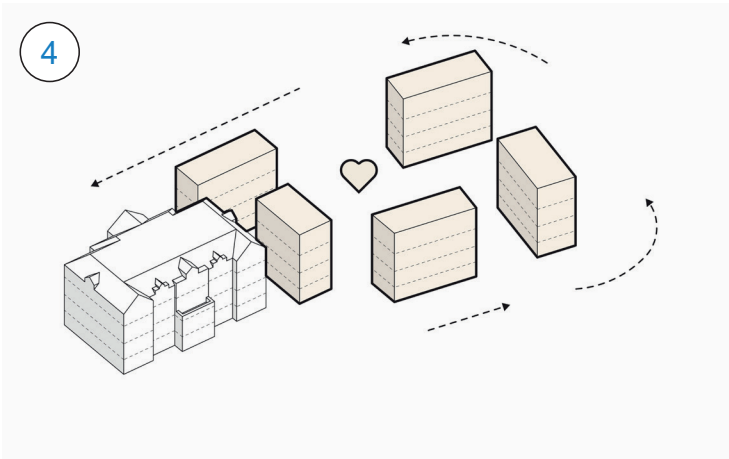
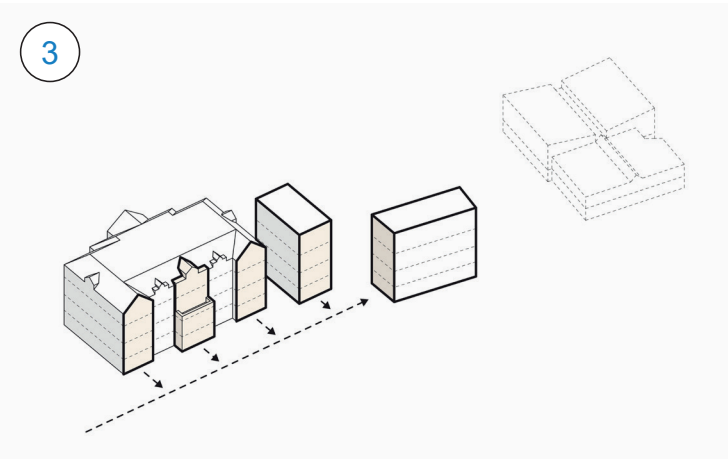
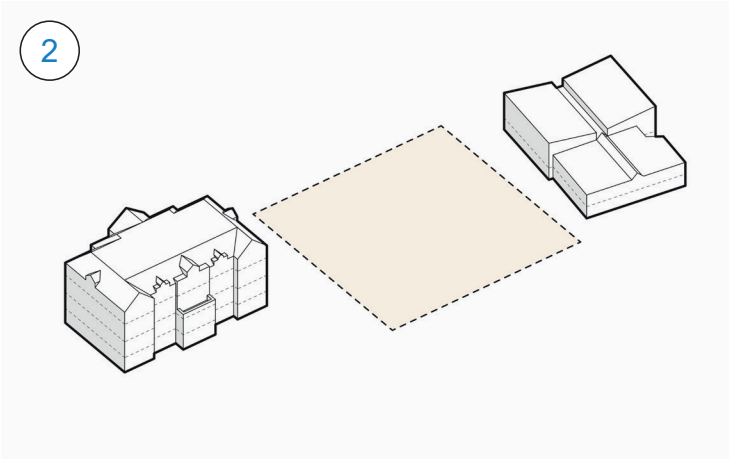
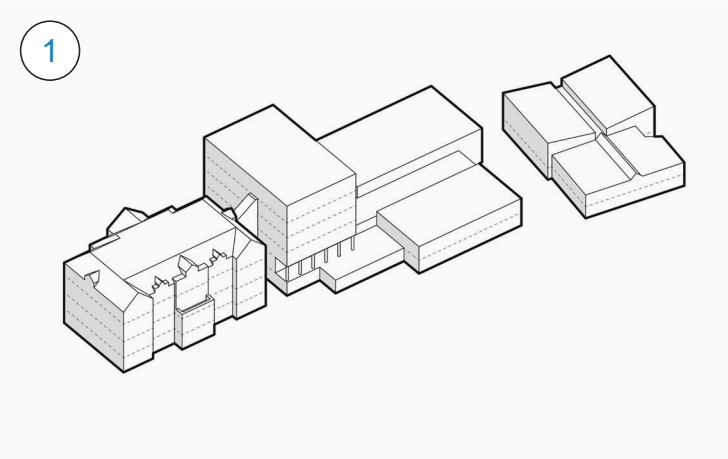


- Key:**
- Construction Zone Boundary
 - Construction Zone
 - Construction Vehicle/Contractor Access Routes
 - Contractor Welfare Cabin
 - Kitchen Access
 - School Secure Lines (Potential Fence Lines)
 - School Area
 - CEC School Ownership Line
 - Retained Building (During Main Build)
 - Temporary Classroom Decant
 - Pupil Flow Route
 - Fire Escape within Retained Buildings
 - Public Access Points

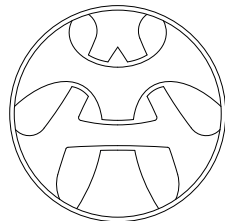
This page shows the indicative decant positions for the construction phase.



Building Concept



- 1. The existing massing on the site provides an incoherent building form
- 2. The removal of Blocks B & C allows for the construction of the new extension
- 3. Establishing a proportional relationship to the Victorian building
- 4. Creating a framework of 'bookends' around a social and learning 'heart' space
- 5. The heart space in relation to the wider site



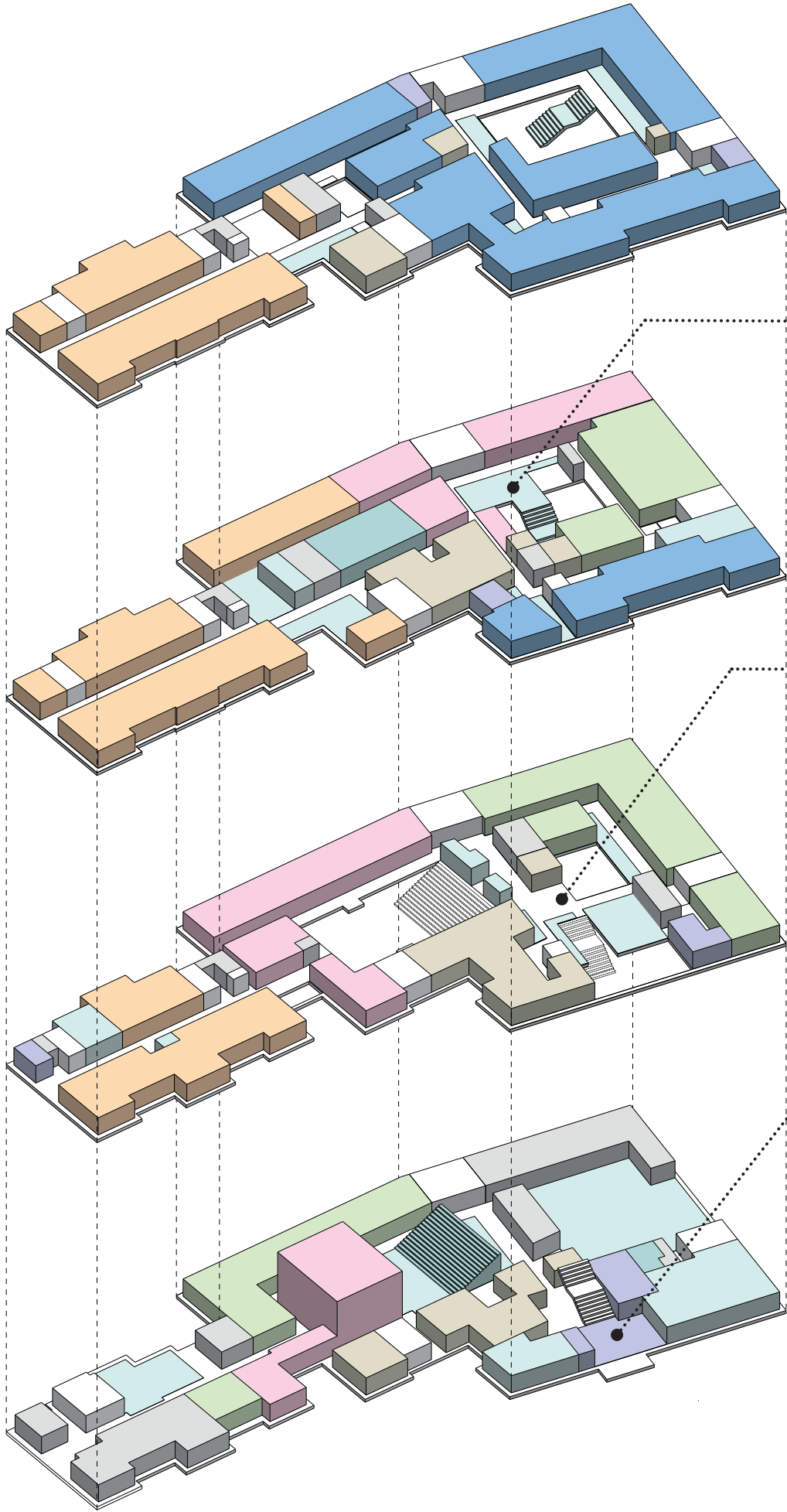
Building Organisation

3 Third Floor

2. Second Floor

1. First Floor

0. Ground Floor



Teaching stair



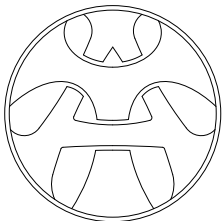
Connected entrance, teaching stair and atrium



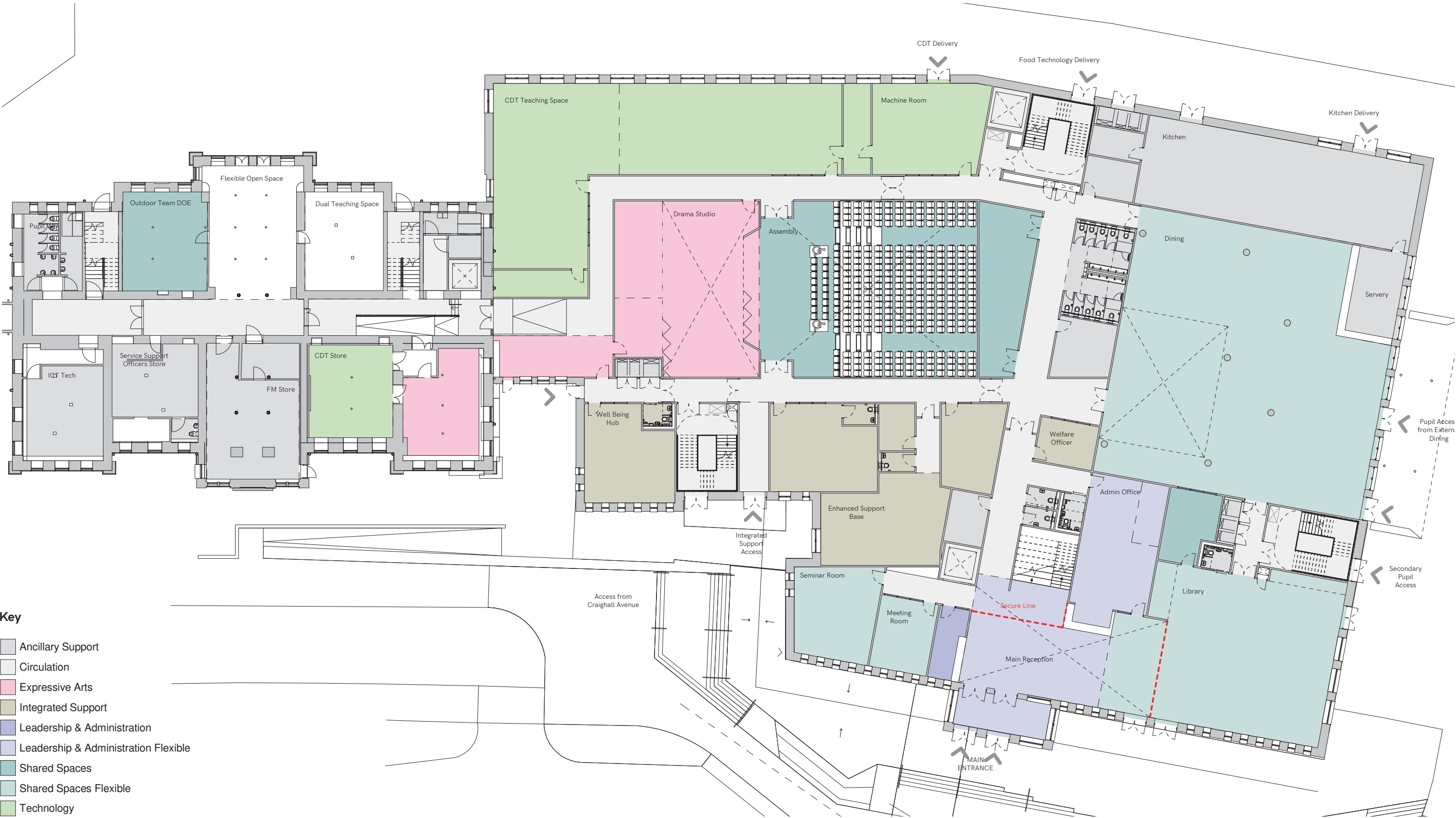
Main entrance foyer

Key

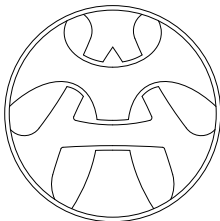
- Ancillary Support
- Circulation
- Expressive Arts
- Flexible Teaching
- Integrated Support
- Languages & Humanities
- Leadership & Administration
- Science & Mathematics
- Shared Spaces
- Shared Spaces Flexible
- Technology



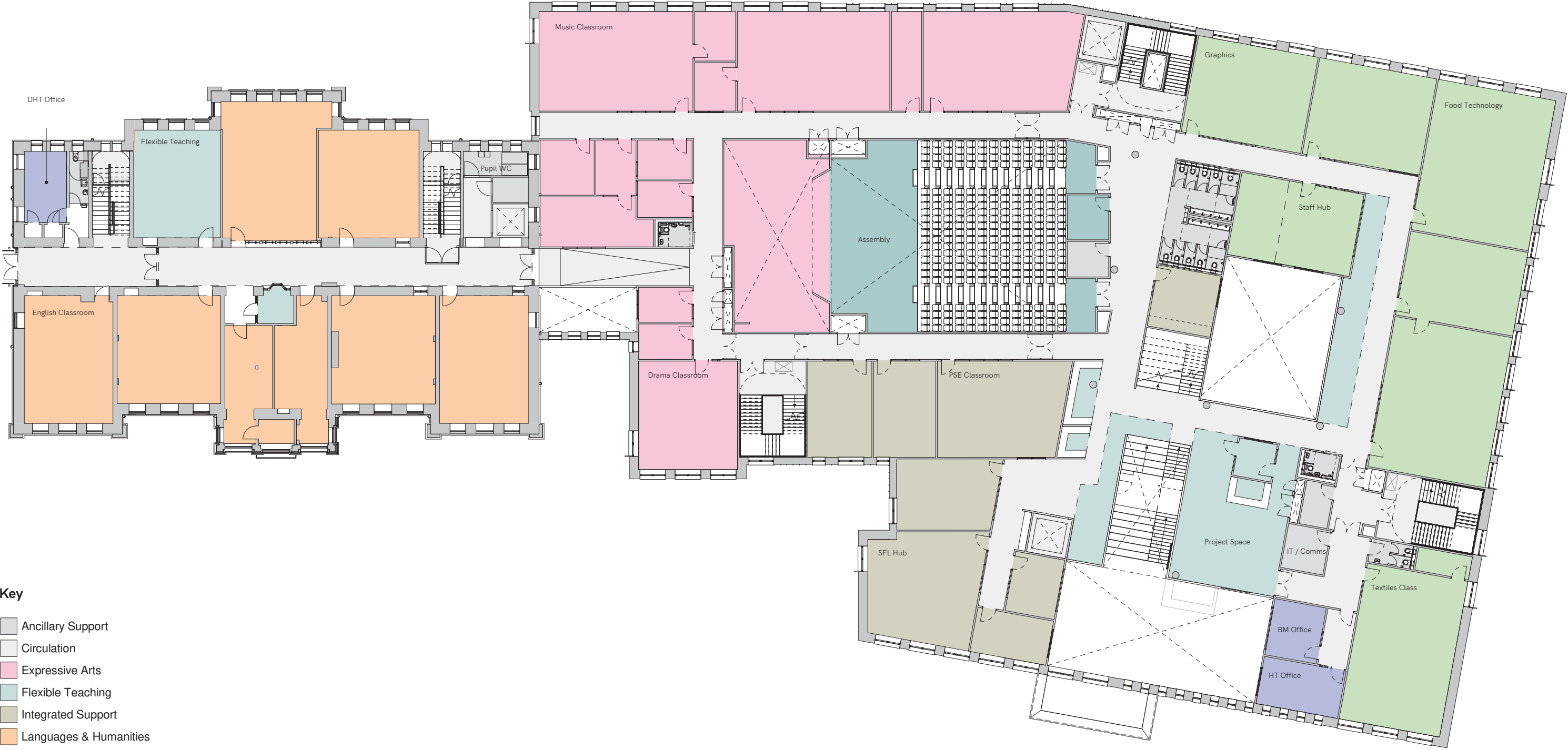
Ground Floor Plan



Not to scale



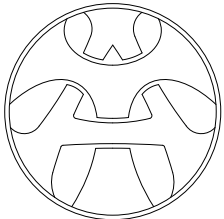
First Floor Plan



- Key**
- Ancillary Support
 - Circulation
 - Expressive Arts
 - Flexible Teaching
 - Integrated Support
 - Languages & Humanities
 - Leadership & Administration
 - Shared Spaces
 - Shared Spaces Flexible
 - Technology



Not to scale



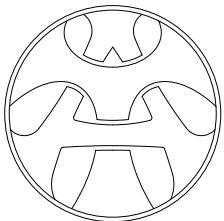
Second Floor Plan



- Key**
- Ancillary Support
 - Circulation
 - Expressive Arts
 - Flexible Teaching
 - Integrated Support
 - Languages & Humanities
 - Leadership & Administration
 - Science & Mathematics
 - Shared Spaces
 - Shared Spaces Flexible
 - Technology



Not to scale



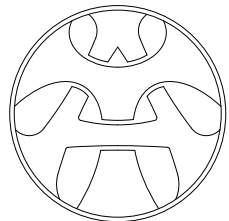
Third Floor Plan



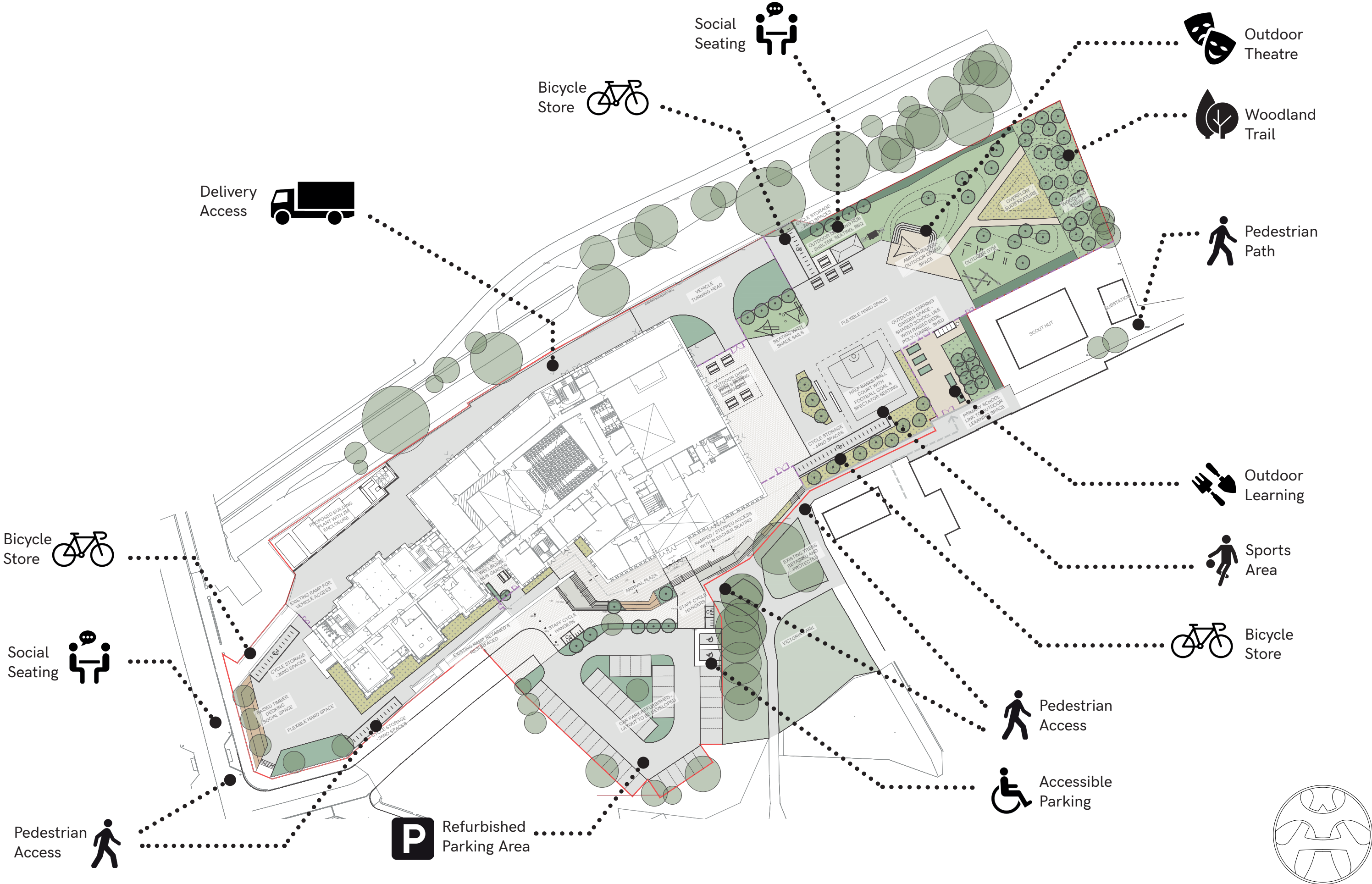
- Key**
- Ancillary Support
 - Circulation
 - Flexible Teaching
 - Integrated Support
 - Languages & Humanities
 - Leadership & Administration
 - Science & Mathematics
 - Shared Spaces Flexible



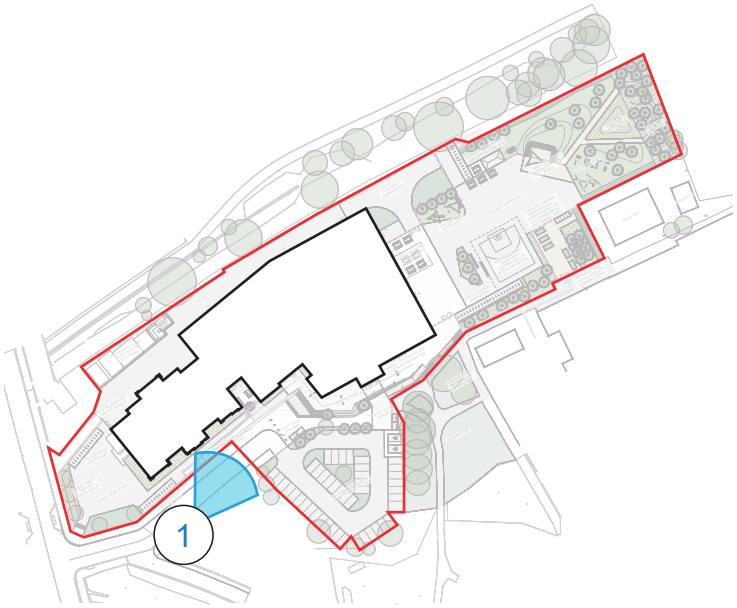
Not to scale



Proposed Landscape

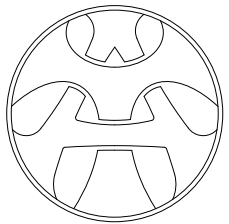


Outline Views



View From Craighall Avenue

Looking east along Craighall Avenue, towards the proposed new school extension, with the Victorian school building visible to the left. The use of bays as a compositional device establishes proportional relationship between old and new.

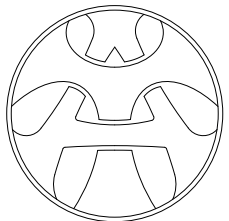


Outline Views



View From Car Park

A closer view of the proposed new extension, looking north-east from Craighall Avenue. The design of the brick and precast concrete façade allows for a contemporary elevation to be produced that still references the existing building.



Outline Views



View From Victoria Park

The main entrance to the new school building viewed from the south east of the site, with the Victorian block visible to the rear. The arrangement of bays around the perimeter of the new extension helps to break down the massing.

