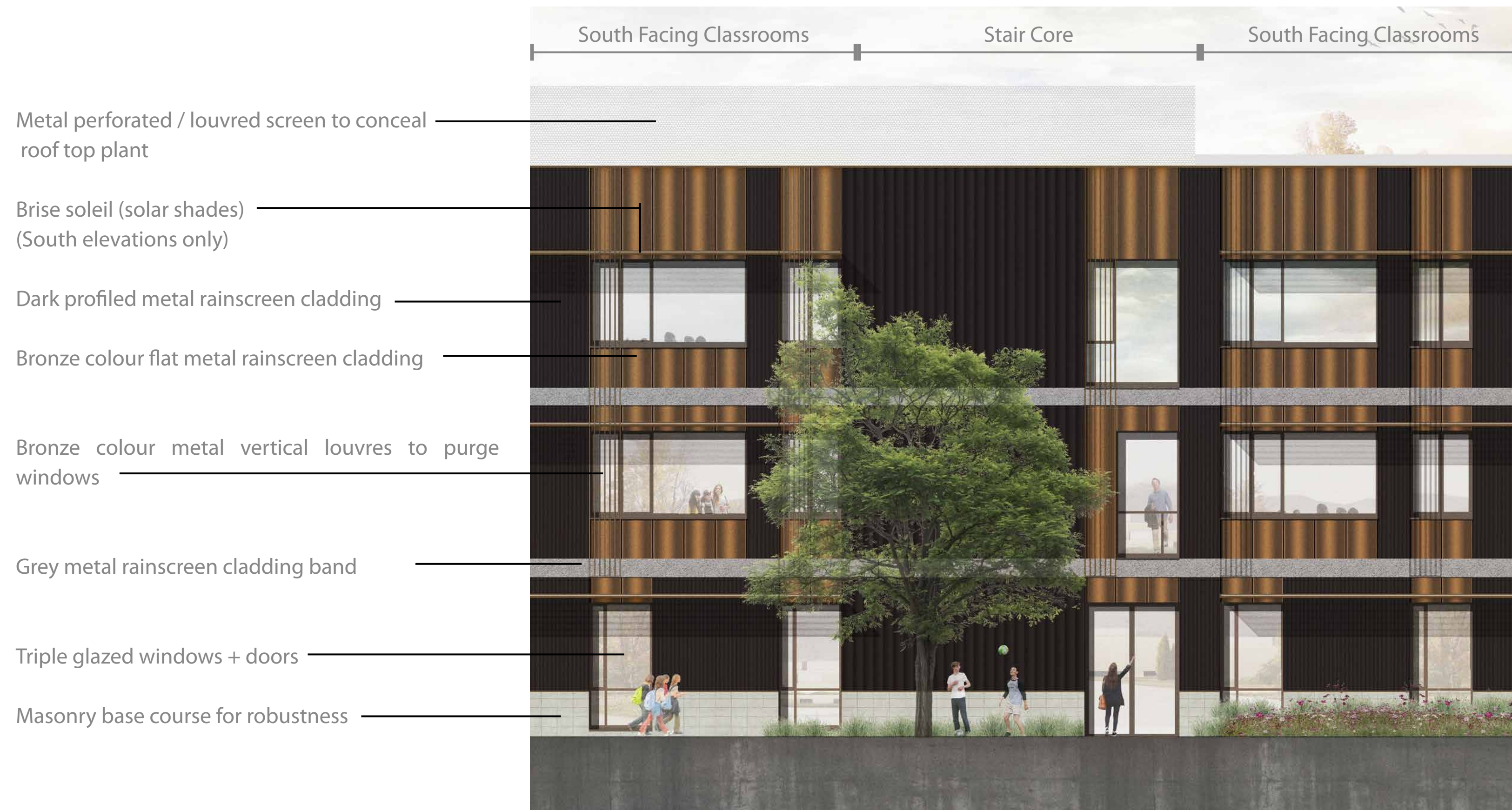


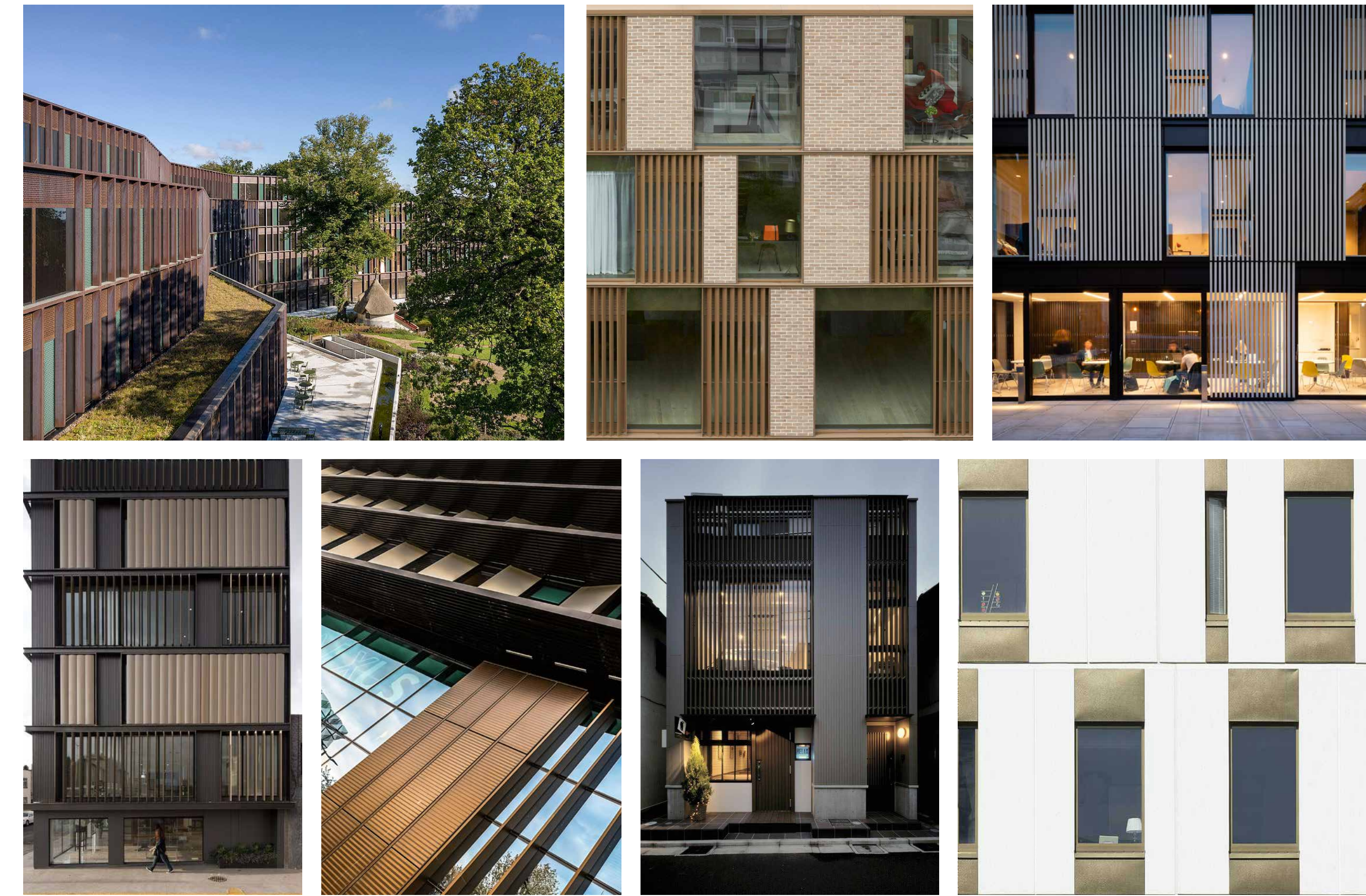




**Current Materials and Elevations Proposals**



**Precedent Images**



**Current Proposed South Elevation**



**Have your say...**

Complete a questionnaire and hand it to one of the project team or post it to the address on the form

**Online:** [www.edinburgh.gov.uk/newlibertonhighschool](http://www.edinburgh.gov.uk/newlibertonhighschool)

**Email:** [newliberton@edinburgh.gov.uk](mailto:newliberton@edinburgh.gov.uk)

Comments can be made until Friday 3rd June 2022