

## 09 POWDERHALL\_What we asked & What you told us

**‘Tell Us About Powderhall’** 200-250 people attended the ‘Tell us about Powderhall’ two day drop in consultations

## The Place Standard Tool | 65 Forms

# HELP PLAN AND SHAPE THE FUTURE OF POWDERHALL

## What is your experience of living in the Powderhall Area?

Name \_\_\_\_\_

Postcode \_\_\_\_\_

Age ☐ 0-19 ☐ 20-40 ☐ 41-60 ☐ 61+

### A Moving Around:

Can I easily walk and cycle around using good quality routes?

A: \_\_\_\_\_

### B Public Transport:

Does public transport meet my needs?

A: \_\_\_\_\_

### C Traffic & Parking:

Do traffic and parking arrangements allow people to move around safely and meet the community's needs?

A: \_\_\_\_\_

### D Streets & spaces:

Do buildings, streets and public spaces create an attractive place that is easy to get around?

A: \_\_\_\_\_

### E Natural spaces:

Can I regularly experience good quality natural space?

A: \_\_\_\_\_

### F Play & Recreation:

Do I have access to a range of space and opportunities for play and recreation?

A: \_\_\_\_\_

### G Facilities & Amenities:

Do facilities and amenities meet my needs? (*shops, schools, places to eat etc*)

A: \_\_\_\_\_

### H Work & Local Economy:

Is there an active local economy and the opportunity to access good quality work?

A: \_\_\_\_\_

### I Housing & Community:

Does housing support the needs of the community and contribute to a positive environment?

A: \_\_\_\_\_

### J Social Interaction:

Is there a range of spaces and opportunities to meet people?

A: \_\_\_\_\_

### K Identity & Belonging:

Does this place have a positive identity and do I feel I belong?

A: \_\_\_\_\_

### L Feeling safe:

Do I feel safe?

A: \_\_\_\_\_

### M Care & Maintenance:

Are buildings and spaces well cared for?

A: \_\_\_\_\_

### N Influence & Sense of Control:

Do I feel able to participate in decisions and help change things for better?

A: \_\_\_\_\_

1 - Very Poor 2 - Poor 3 - Fair 4 - Acceptable 5 - Good 6 - Very good 7 - Excellent

Collective Architecture comply with General Data Protection Regulation (GDPR) and the Data Protection Act 2018. If you have any questions or concerns about your personal data, please do not hesitate to contact us.

**Questionnaire** | Tell us your thoughts and ideas | **153 Forms**

HELP PLAN AND SHAPE THE FUTURE OF

POWDERHALL

Tell us your thoughts and ideas.....

Before our team considers any new proposals or puts 'pen to paper' please share your thoughts and ideas about Powderhall.

01

Housing and Community

Tell us your thoughts on places to live.....

02

Streets & Open Space & Movement

Tell us your thoughts for places to meet and gather and how you get around the area.....

03

Work & Economy

Tell us your thoughts for places to work.....

04

Opportunities, ideas and possibilities

Tell us what is great about Powderhall and share ideas you have for future opportunities and possibilities (also put flags on the model)

05

Constraints, problems and challenges

Please share any information you might have about any challenges and constraints about Powderhall and the site (also put flags on the model)

06

Any other comments?

Please do continue over onto the back of this flyer if you have more to add.

Name

Postcode

Age

0-19

20-40

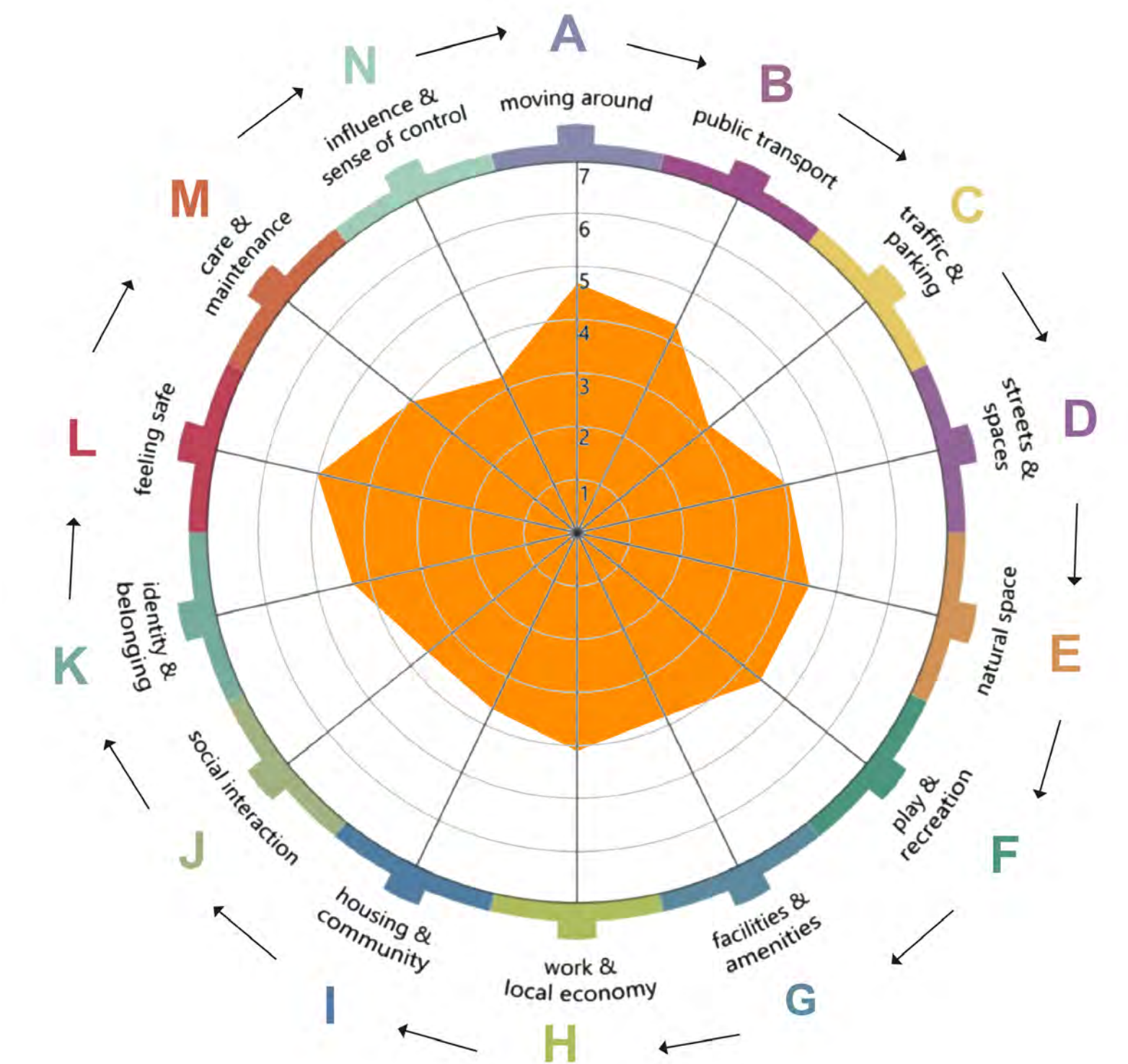
41-60

60+

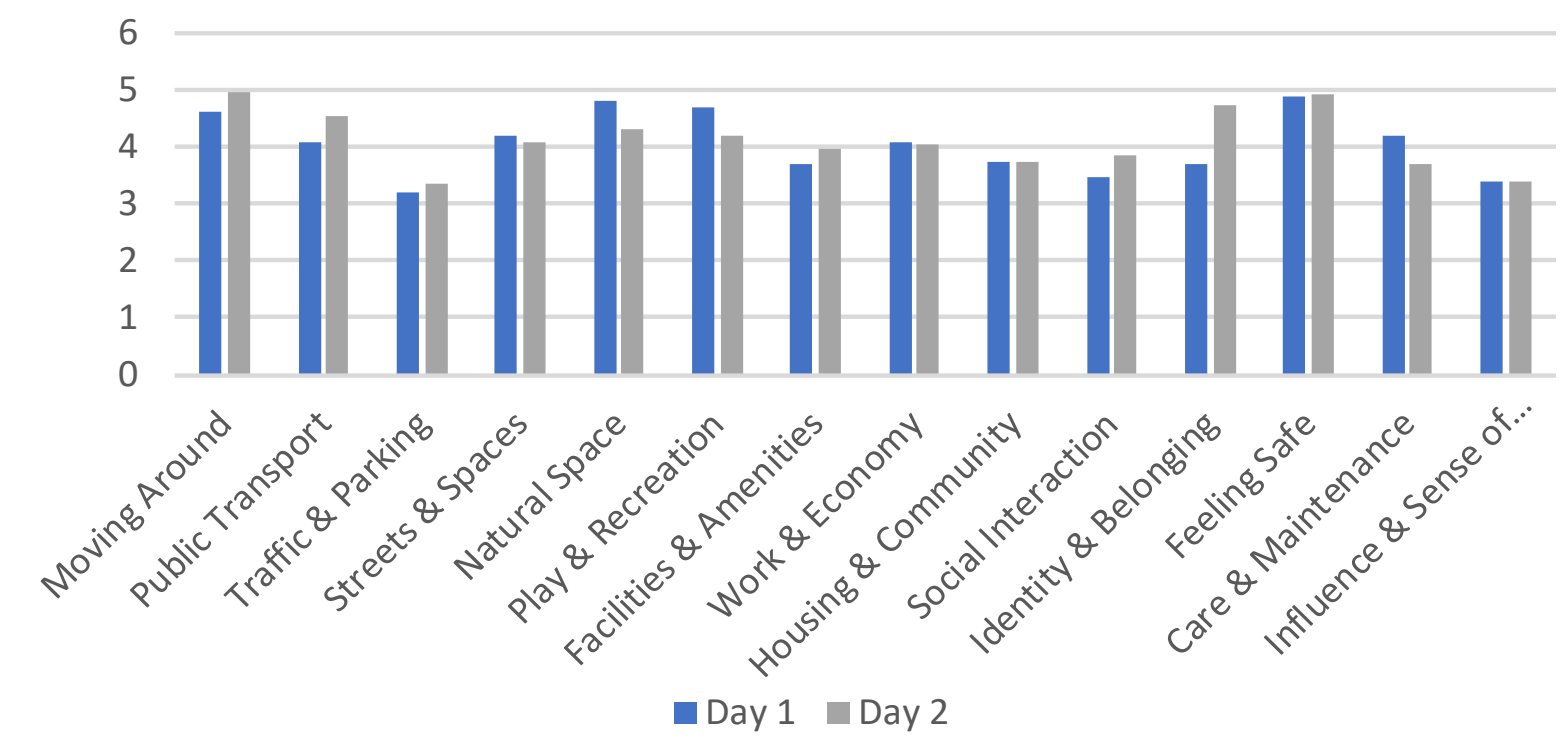
Collective Architecture comply with General Data Protection Regulation (GDPR) and the Data Protection Act 2018. If/ you have any questions or concerns about your personal data, please do not hesitate to contact us.

## Feedback

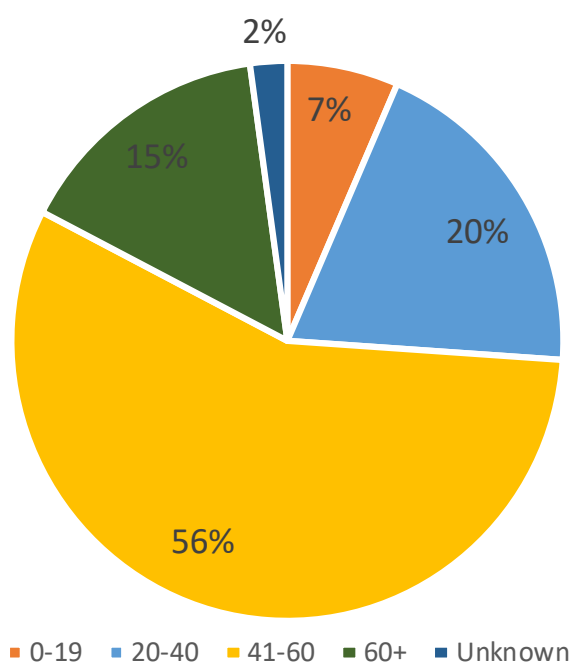
## The Place Standard Tool Averages



1 - Very Poor   2 - Poor   3 - Fair   4 - Acceptable   5 - Good   6 - Very good   7 - Excellent



### Age Range Average



## Key Comments

**Green Space**  
Desire to maintain high quality public green space.

**Social Interaction and sense of community**  
Need for informal public meeting spaces. Excitement regarding the stables block becoming a community facility and creative hub.

**Housing and amenity**  
Strong support for construction of affordable homes and associated amenity space/facilities.

**Feeling Safe**  
Powderhall is a safe environment and people feel safe walking around the area

## Opportunities and Constraints



## Key Comments

## Opportunities

- Make St Marks Path safer and more attractive
- Improve public transport facilities
- Better use of available green space
- Community garden/hub/resource centre
- Intergenerational living and activities
- More engagement with the Water of Leith
- Better outdoor facilities for children
- Connect to existing cycle path network
- Provide outdoor fitness/sport facilities
- Affordable Housing Provision
- Community Cafe
- Places to meet and gather
- Create greater connections through the site
- Bring green space into site

## Constraints

- Loss of community with high level of private lets
- Broughton Road very busy with fast moving traffic
- School children have to cross road to green space
- Bowling Greens are inaccessible to the general public
- No access from Powderhall Road to Redbraes

## Opportunities and Constraints Model



### My Postcode





# 10 POWDERHALL\_The Place Brief & 21st Century Homes

## What is a Place Brief?

### The Place Brief

The Place Brief for Powderhall is being developed in collaboration with the local community, the City of Edinburgh Council, 21st Century Homes, Collective Architecture and Urban Pioneers.

A series of public and invited consultations encourages community engagement at the very beginning of the development, establishing a strong collaborative relationship between the City of Edinburgh Council, the Powderhall local community and local stakeholders. This will identify design and place-making principles for the site, whilst taking into account neighbouring sites and the regeneration/place-making objectives of the wider Powderhall area, and it will capture current community opportunities, constraints and aspirations.

This process will feed into the Place Brief, which is a set of high level principles which will shape the future development of the Powderhall site. The format of the brief specifically addresses the six place-making criteria which underpin the Scottish Government's policy documents; Designing Places, Creating Places and Designing Streets. The six criteria are:

- Distinctive
- Safe and pleasant
- Easy to move around
- Welcoming
- Adaptable
- Resource efficient

The process involves two stages, the first of which is about gathering the views of the community. Once this process is complete the brief will then be written around the six criteria above, incorporating the outputs from the first stage.



## 21st Century Homes

### 21st Century Homes at Powderhall

The Council's house building programme, 21st Century Homes, are building homes for social rent, mid market rent and market rent across the city. 21st Century homes are building energy efficient, high quality homes, with a commitment to making lives better.

## COUNCIL LED HOUSING DEVELOPMENTS

Leith Fort

- High quality, vibrant and sustainable places where people want to live
- Award winning design
- Energy efficient – fabric first approach; Silver Standard as minimum
- Housing for Varying Needs
- Secure by Design
- Mixed tenure
- Mixed use – shop units, nursery provision, community facilities





# 11 POWDERHALL\_Places to live..... to meet and gather.



Streets & Spaces



Identity & Belonging



"Architecture can't force people to connect, it can only plan the crossing points, remove barriers, and make the meeting places useful and attractive." Denise Scott Brown.



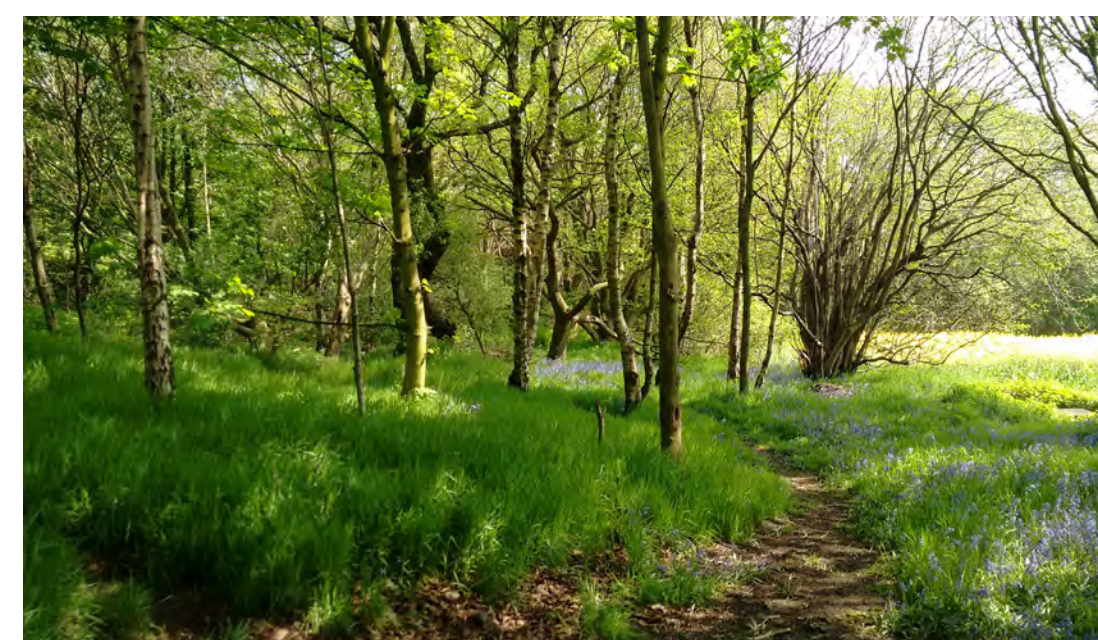
Feeling Safe



Facilities & Amenities



"In authentic experience, 'home', whether a house, a village or a region... is a central point of existence and individual identity from which you look out on the rest of the world." Edward Relph.



Natural Spaces



Housing & Community



"Cities have the capability of providing something for everybody only because, and only when, they are created by everybody." Jane Jacobs.

Influence & Sense of Control



Play & Recreation



Social Interaction



Care & Maintenance

"Green infrastructure should be thought about at every scale of planning, from the strategic framework right down through neighbourhoods and within streets to the individual house or flat." The Scottish Government 2012.





# 11 POWDERHALL\_Places to live..... to meet and gather.



Streets & Spaces



Identity & Belonging



"Architecture can't force people to connect, it can only plan the crossing points, remove barriers, and make the meeting places useful and attractive." Denise Scott Brown.

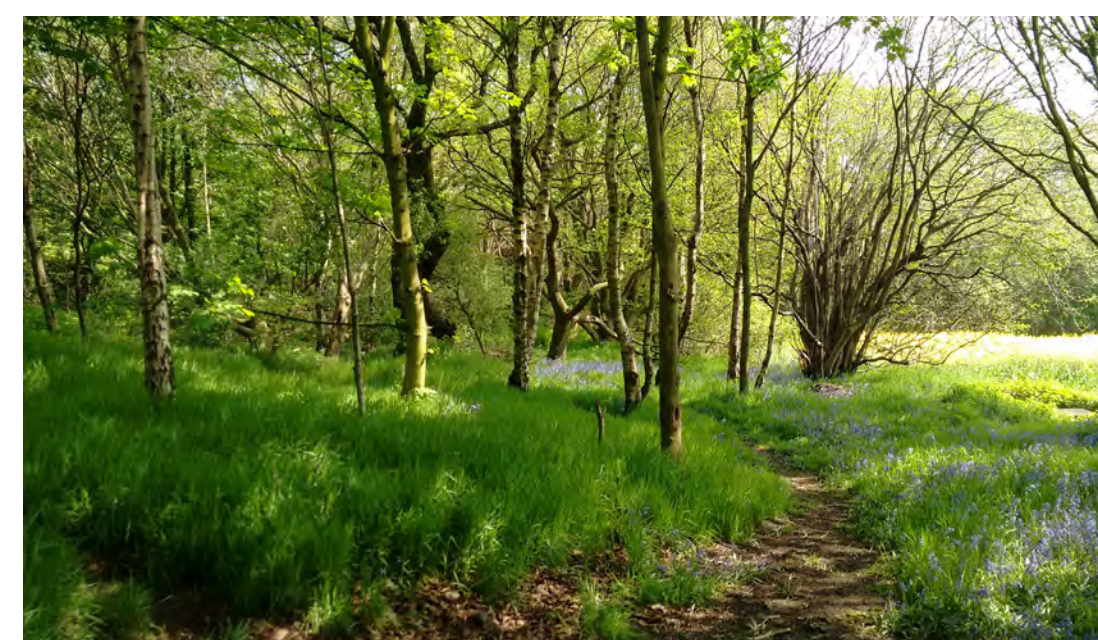


Feeling Safe

Facilities & Amenities



"In authentic experience, 'home', whether a house, a village or a region... is a central point of existence and individual identity from which you look out on the rest of the world." Edward Relph.



Natural Spaces

"Cities have the capability of providing something for everybody only because, and only when, they are created by everybody." Jane Jacobs.

Influence & Sense of Control



Play & Recreation



Housing & Community



Social Interaction



Care & Maintenance

"Green infrastructure should be thought about at every scale of planning, from the strategic framework right down through neighbourhoods and within streets to the individual house or flat." The Scottish Government 2012.

