

AECOM

PROJECT

CYCLE AND WALKING
IMPROVEMENTS AT
OLD DALKEITH ROAD

CLIENT

EDINBURGH
THE CITY OF EDINBURGH COUNCIL

CONSULTANT

AECOM
1 Tanfield
EDINBURGH, EH3 5DA
+44 (0) 131 301 8600 tel
+44 (0) 131 301 8699 fax
www.aecom.com

Key

--- QUIETROUTE NETWORK - EXISTING

DRAFT

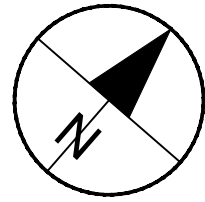
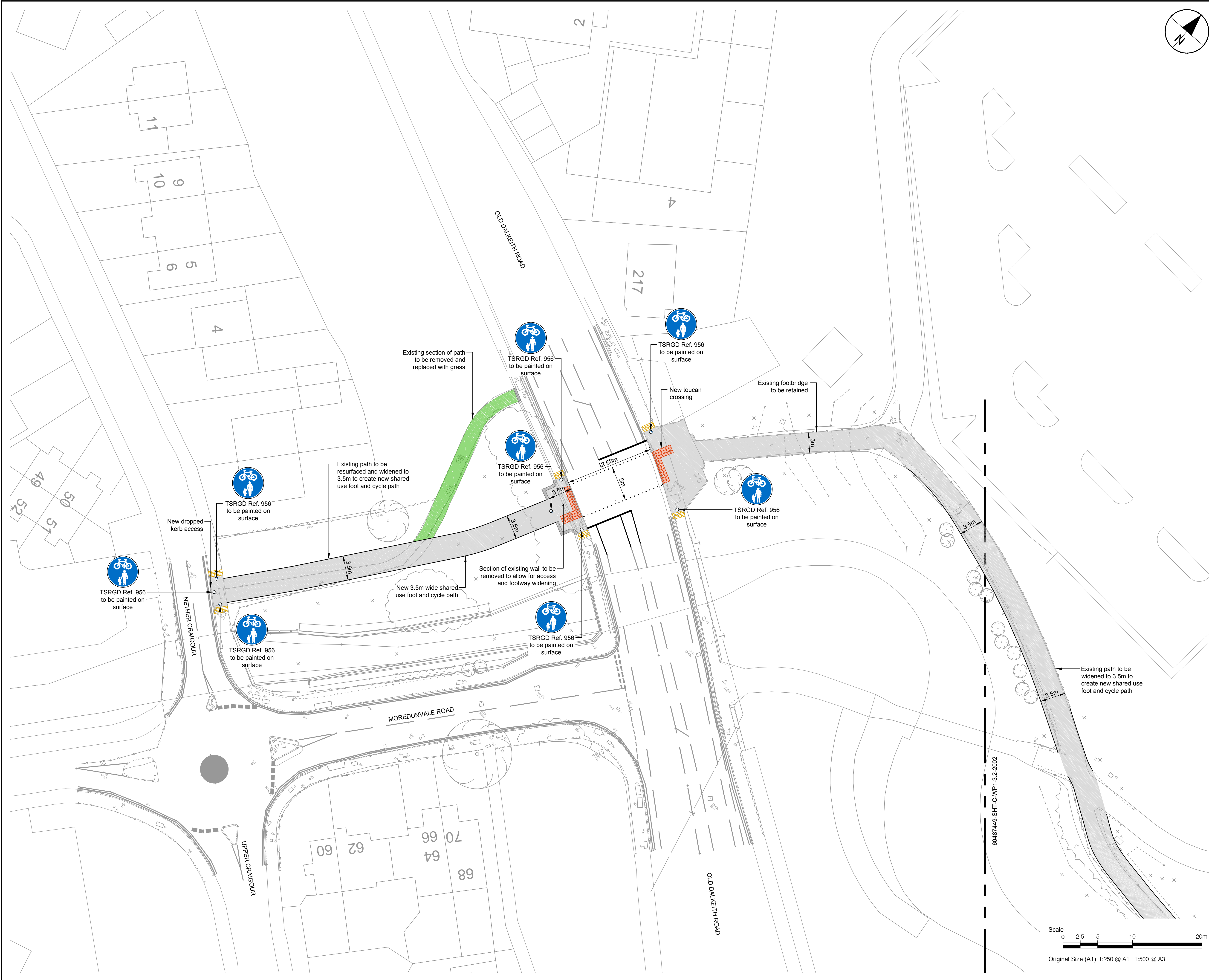
SHEET TITLE

3.2 OLD DALKEITH ROAD
PUBLIC CONSULTATION
LOCATION PLAN

SHEET NUMBER

60487449-SHT-C-WP1-3.2-2000

This drawing has been prepared for the use of AECOM's client. It may not be used, modified, reproduced or relied upon by third parties, except as agreed by AECOM or as required by law. AECOM accepts no responsibility, and denies any liability, whatsoever, to any party that uses or relies on this drawing without AECOM's express written consent. Do not scale this document. All measurements must be obtained from the stated dimensions.



AECOM

PROJECT

CYCLE AND WALKING
IMPROVEMENTS AT
OLD DALKEITH ROAD

CLIENT

EDINBURGH
THE CITY OF EDINBURGH COUNCIL

CONSULTANT

AECOM
1 Tanfield
EDINBURGH, EH3 5DA
+44 (0) 131 301 8600 tel
+44 (0) 131 301 8699 fax
www.aecom.com

Key

- Footpath
- Verge
- New road markings
- Tactile paving (contrasting grey corduroy)
- Tactile paving (controlled)

DRAFT

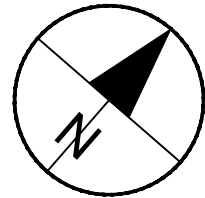
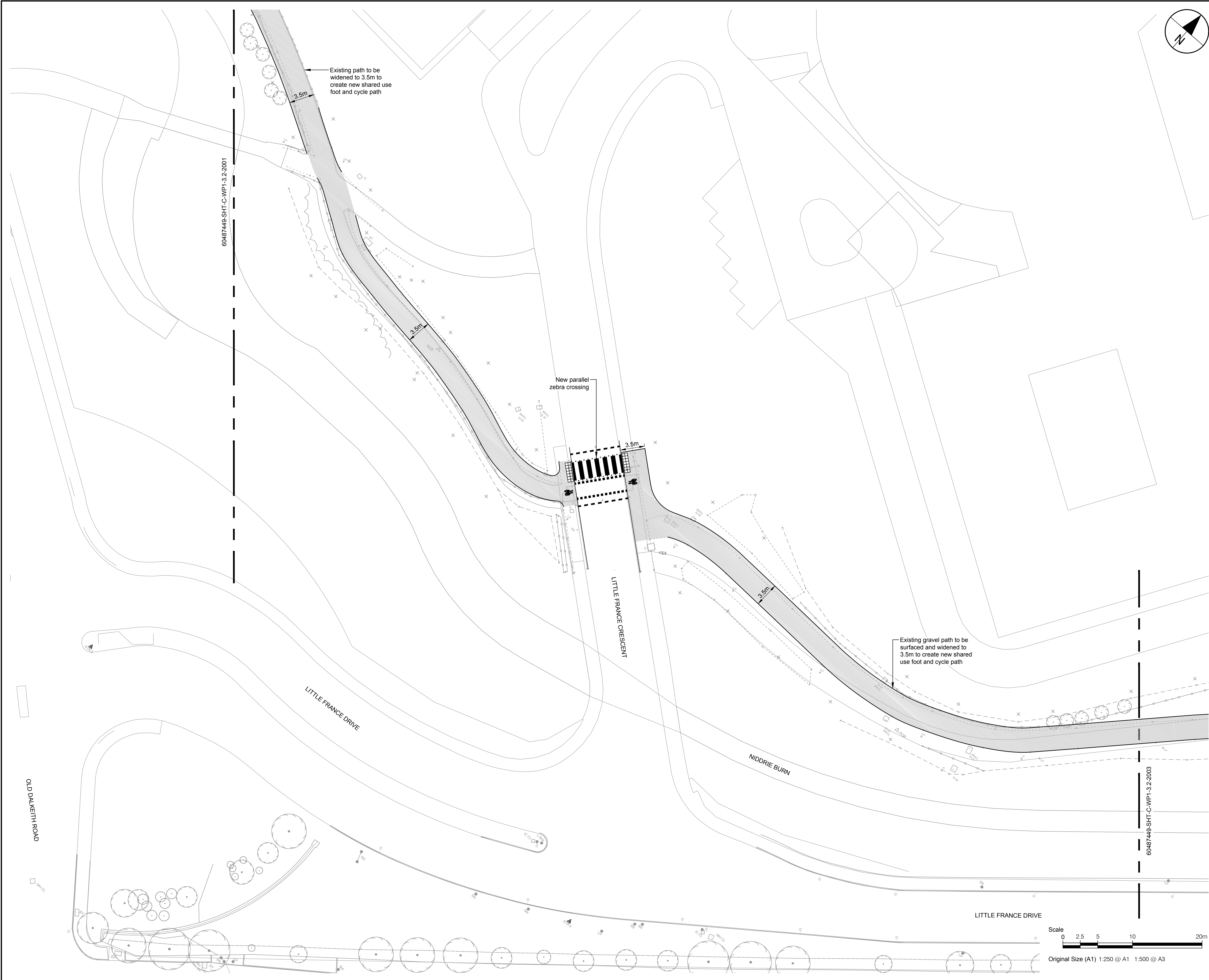
SHEET TITLE

3.2 OLD DALKEITH ROAD
CONSULTATION PLAN
SHEET 1 OF 3

SHEET NUMBER

60487449-SHT-C-WP1-3.2-2001

This drawing has been prepared for the use of AECOM's client. It may not be used, modified, reproduced or relied upon by third parties, except as agreed by AECOM or as required by law. AECOM accepts no responsibility, and denies any liability whatsoever, to any party that uses or relies on this drawing without AECOM's express written consent. All measurements must be obtained from the stated dimensions.



AECOM

PROJECT

CYCLE AND WALKING
IMPROVEMENTS AT
OLD DALKEITH ROAD

CLIENT

EDINBURGH
THE CITY OF EDINBURGH COUNCIL

CONSULTANT

AECOM
1 Tanfield
EDINBURGH, EH3 5DA
+44 (0) 131 301 8600 tel
+44 (0) 131 301 8699 fax
www.aecom.com

Key

- Footpath
- New road markings
- Tactile paving (uncontrolled)

DRAFT

SHEET TITLE

3.2 OLD DALKEITH ROAD
GENERAL ARRANGEMENT
SHEET 2 OF 3

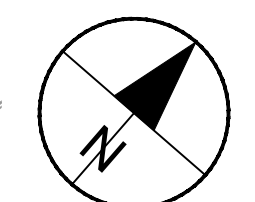
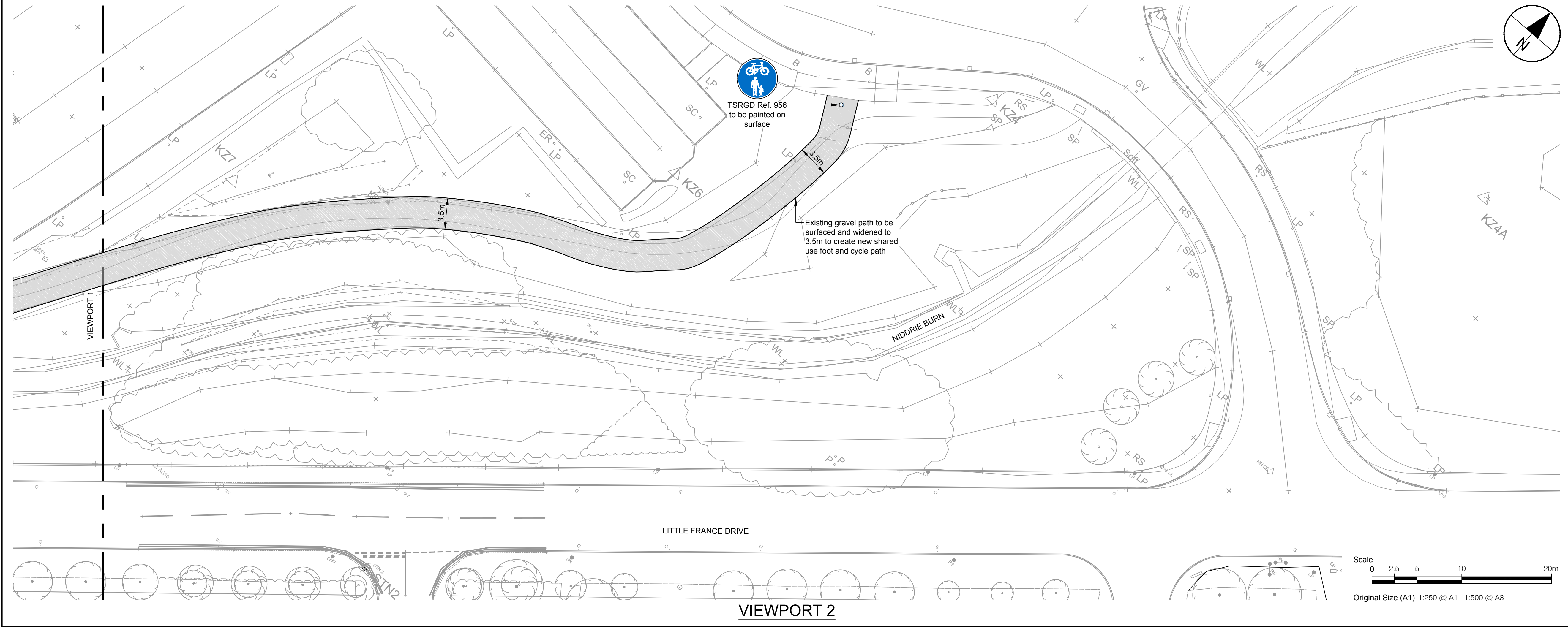
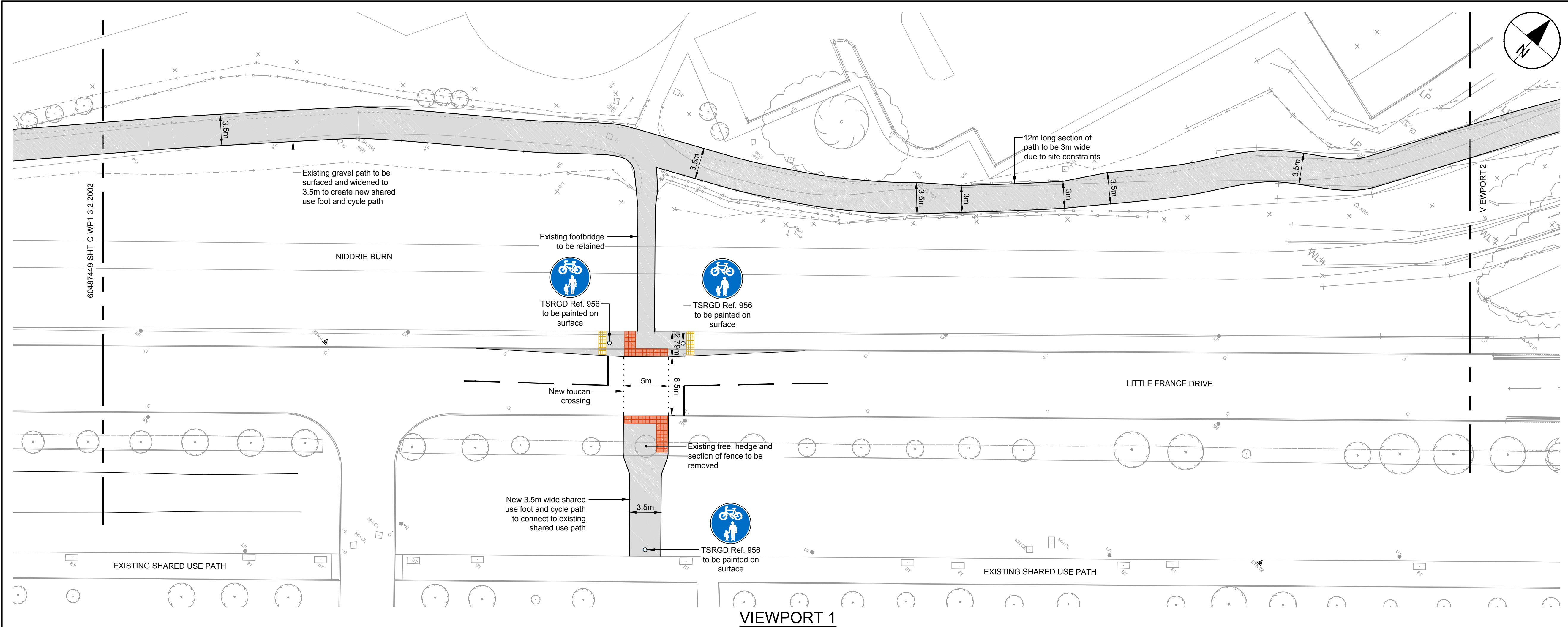
SHEET NUMBER

60487449-SHT-C-WP1-3.2-2002

This drawing has been prepared for the use of AECOM's client. It may not be used, modified, reproduced or relied upon by third parties, except as agreed by AECOM or as required by law. AECOM accepts no responsibility, and denies any liability whatsoever, to any party that uses or relies on this drawing without AECOM's express written consent. Do not scale this document. All measurements must be obtained from the stated dimensions.

File name: F:\PROJECTS\TRAFFIC - CEC WALK CYCLE WP103 EXECUTION\CAD20-SHEETS\3.2 - OLD DALKEITH ROAD\PUBLIC CONSULTATION
PLANS\60487449-SHT-C-WP1-3.2-2001-2003.DWG
Last saved by: ROBERT SONM Last Plotted: 2016-02-21

Project Management Initials: Designer: MR Checked: PM Approved: PJL ISO A1 594mm x 841mm



AECOM

PROJECT
CYCLE AND WALKING IMPROVEMENTS AT OLD DALKEITH ROAD

CLIENT

EDINBURGH
THE CITY OF EDINBURGH COUNCIL

CONSULTANT
AECOM
1 Tanfield
EDINBURGH, EH3 5DA
+44 (0) 131 301 8600 tel
+44 (0) 131 301 8699 fax
www.aecom.com

- Key
- Footpath
 - New road markings
 - Tactile paving (contrasting grey corduroy)
 - Tactile paving (controlled)

DRAFT

SHEET TITLE
**3.2 OLD DALKEITH ROAD
GENERAL ARRANGEMENT
SHEET 3 OF 3**

SHEET NUMBER
60487449-SHT-C-WP1-3.2-2003

