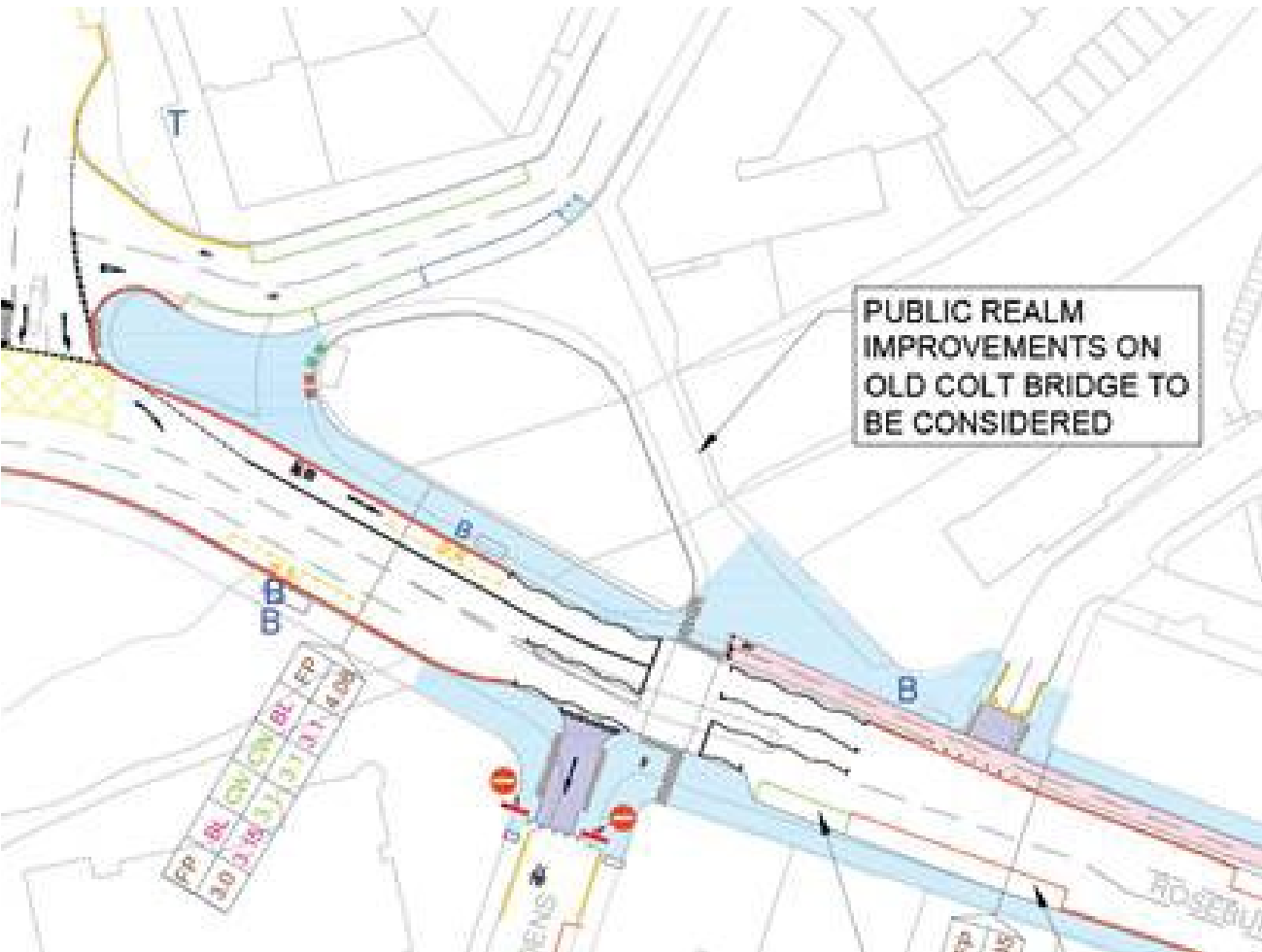
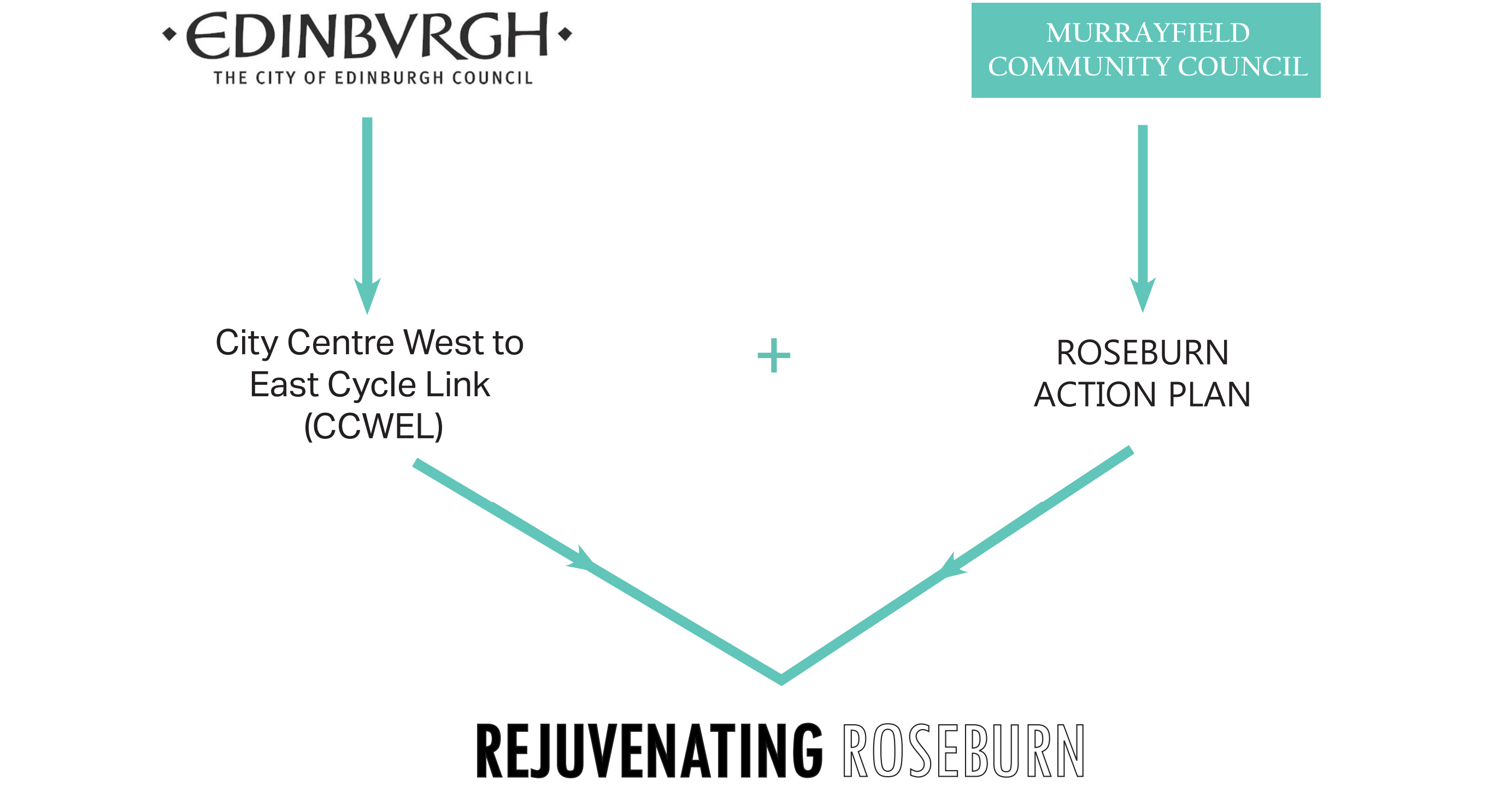
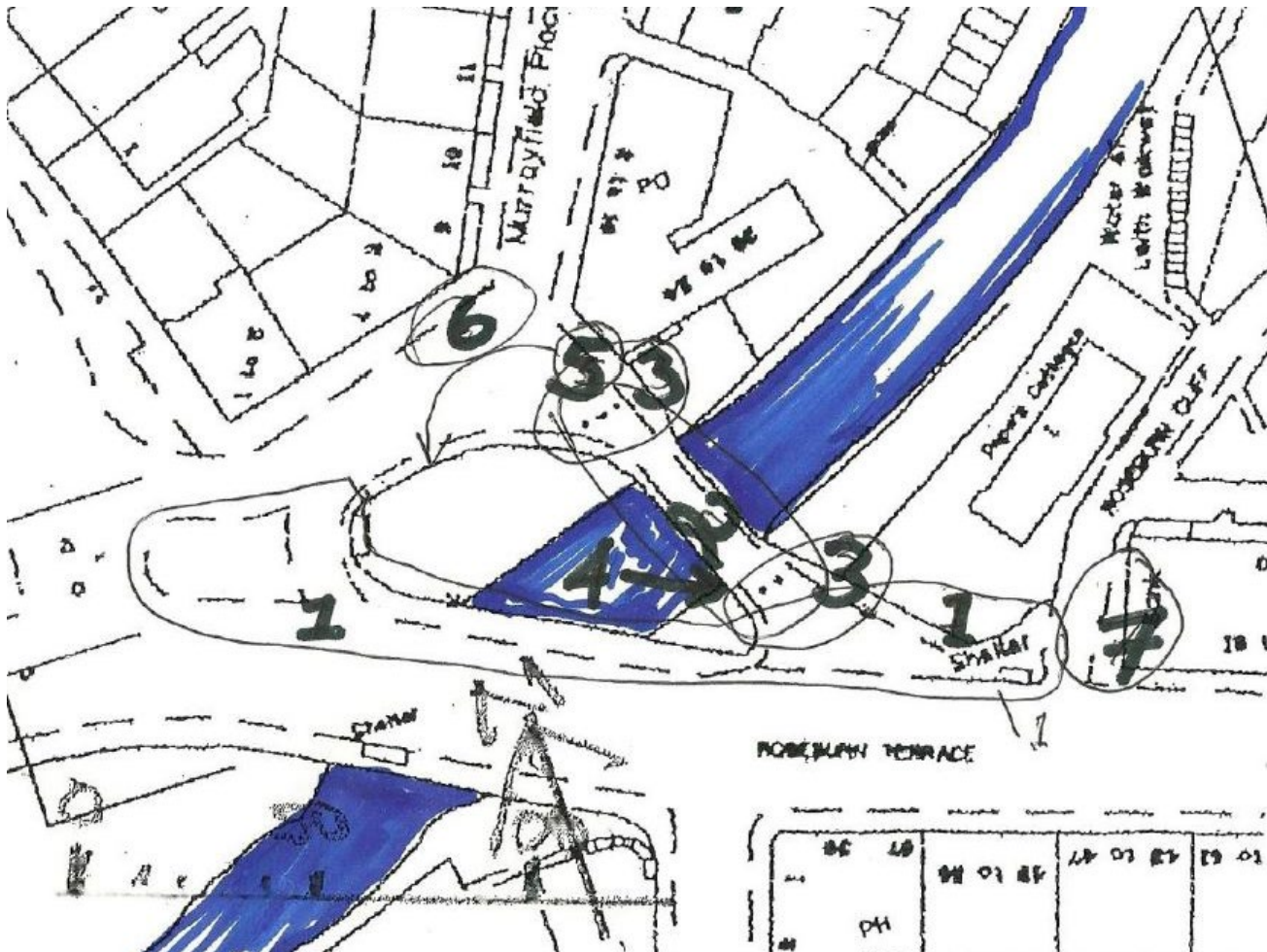


PROJECT INTRODUCTION

In 2014 Murrayfield Community Council (MCC) generated the Roseburn Action Plan, calling for various improvements in the Roseburn Area. In 2015 the Council produced plans for the City Centre West to East Cycle Link (CCWEL) project, a cycle route from Roseburn to Leith Walk through the City Centre. 'Rejuvenating Roseburn' has been established to deliver on the principles of both of these plans alongside further community participation to deliver transformational improvements to the Roseburn area.



CCWEL Preliminary Designs



Roseburn Action Plan

EXISTING CONDITIONS



Murrayfield Place
Existing parking and boundary wall.



Murrayfield Avenue, Murrayfield Place
Junction and under used space.



Roseburn Terrace
Large open road junction.



Old Coltbridge
Pedestrian and cyclists only, good views of the Water of Leith.

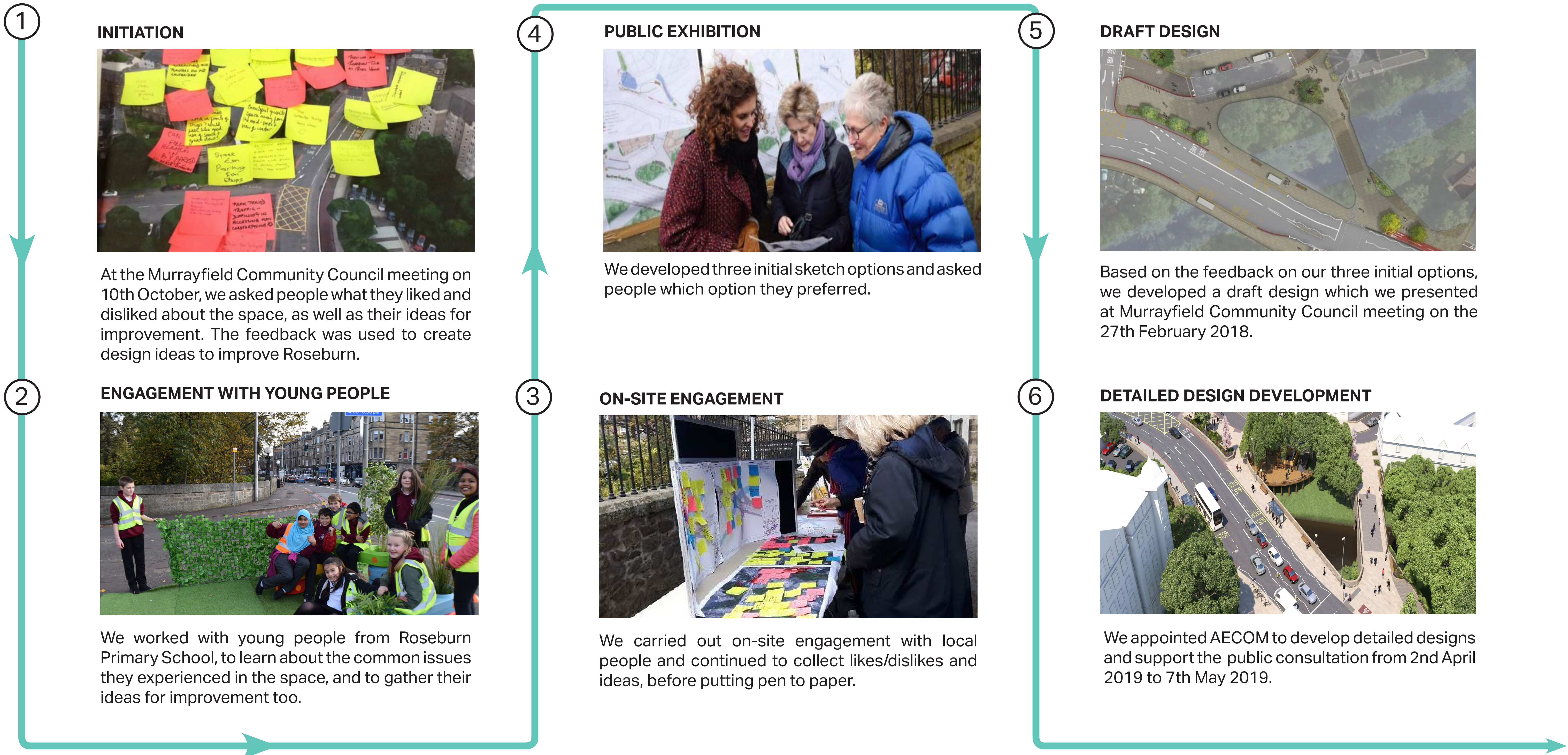


Southern end of Old Coltbridge
Large open space, under utilised.



New Bridge
Crossing the Water of Leith, showing the large mature trees on site.

ENGAGEMENT SO FAR



OUR PROPOSALS



Visual Perspective 1: Overview of the Rejuvenating Roseburn design (Looking north from Roseburn Terrace).

Questions (See questionnaire on the back):

- In general, to what extent do you support these proposals?
- To what extent do you think these proposals will enhance the amenity of the Roseburn area?
- To what extent do you think these proposals enhance the amenity value of the Water of Leith in Roseburn?
- To what extent do you support the introduction of a viewing platform over the Water of Leith as shown in the designs?



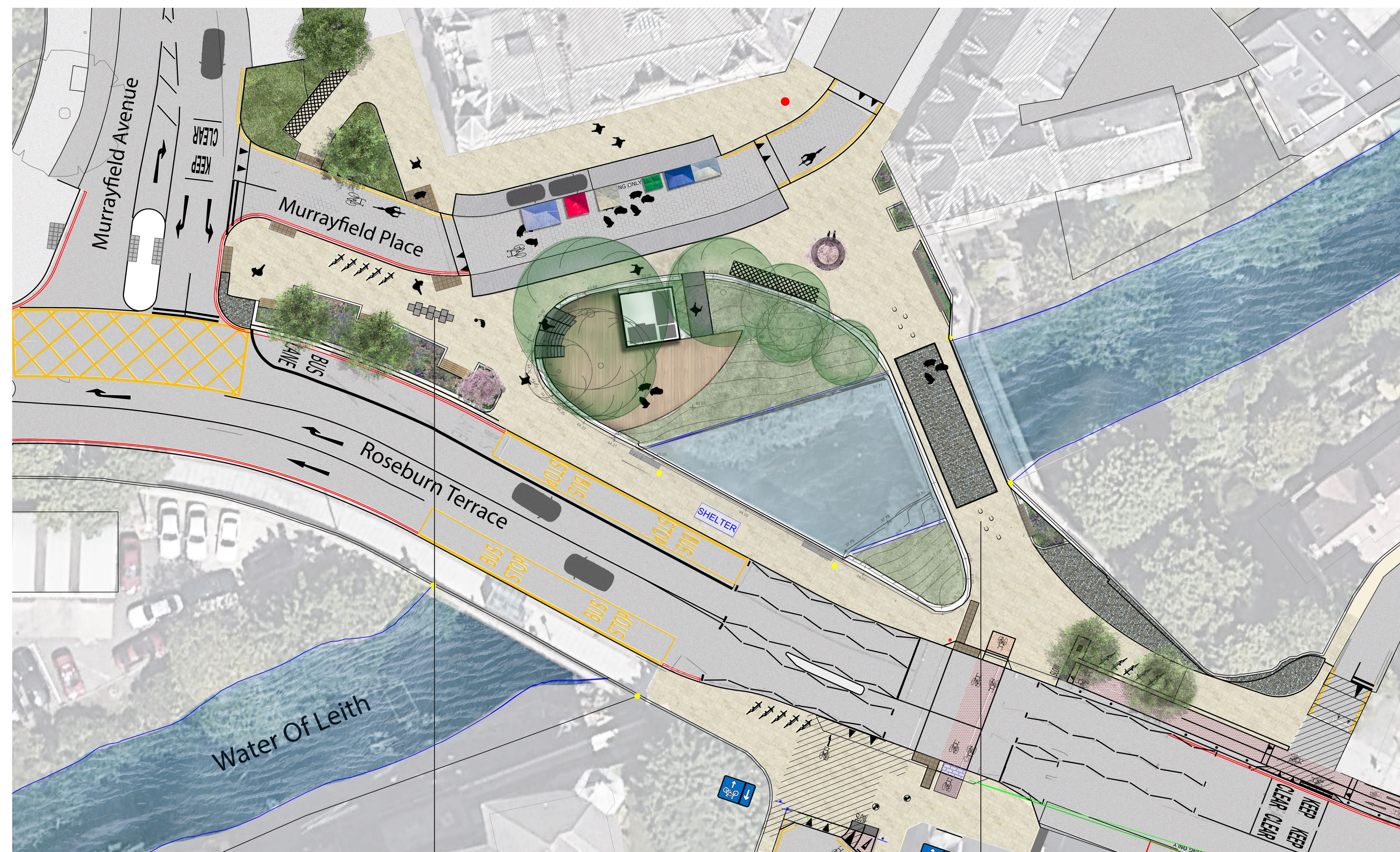
Visual Perspective 2: Showing the new road layout with potential for temporary events e.g. farmers markets, helping to create a sense of place. (Looking south from Murrayfield Place)



Visual Perspective 3: New planters placed alongside the proposed seating areas will bring more greenery to the space. The use of natural sandstone for paving and the planters will help to improve the look of the space. (Looking east from Murrayfield Avenue)

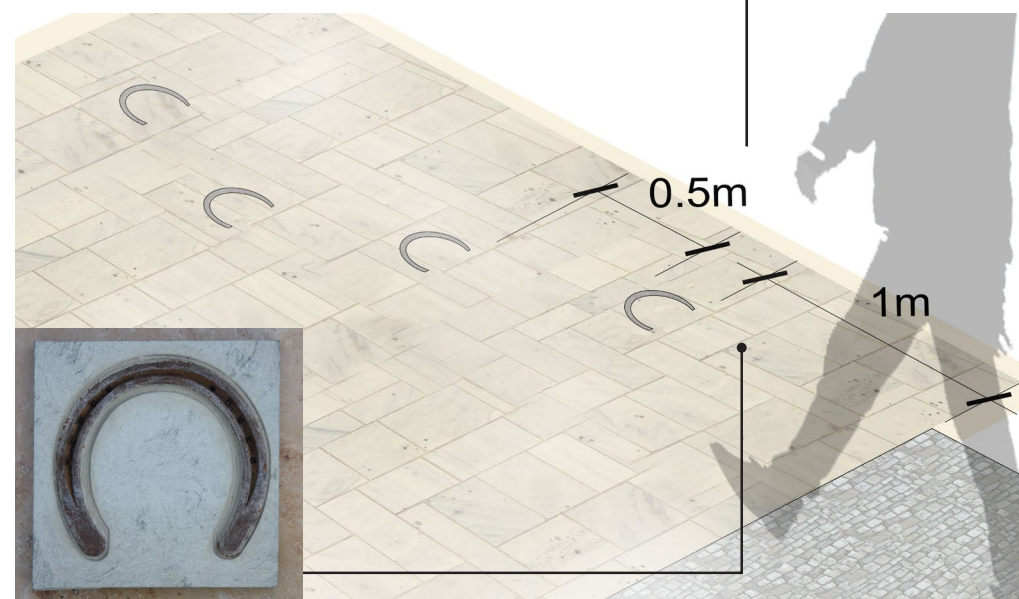
OUR DESIGN

The design proposals have been developed around four main themes: Heritage, Nature, Community and Recreation. Each of these contribute to the potential use and enjoyment of the space, to create a better place for people.



Natural stone artwork

Hopscotch inset to add an element of play to the space.



Indicative Horseshoe layout

In recognition of the heritage of Old Coltbridge, 4 horseshoes would be laid flush in natural sandstone either side of the bridge. This relates to the Coltbridge Canter when the Hanoverian cavalry fled from the Jacobite army in 1745.

LEGEND

- Substation
- Sandstone paving
- Cobble stone paving
- Additional Trees
- 2 options for the location of the communal bins
- Natural stone inset - Hopstoch
- Low level planters
- Timber platform with steps and ramp access

Themes:

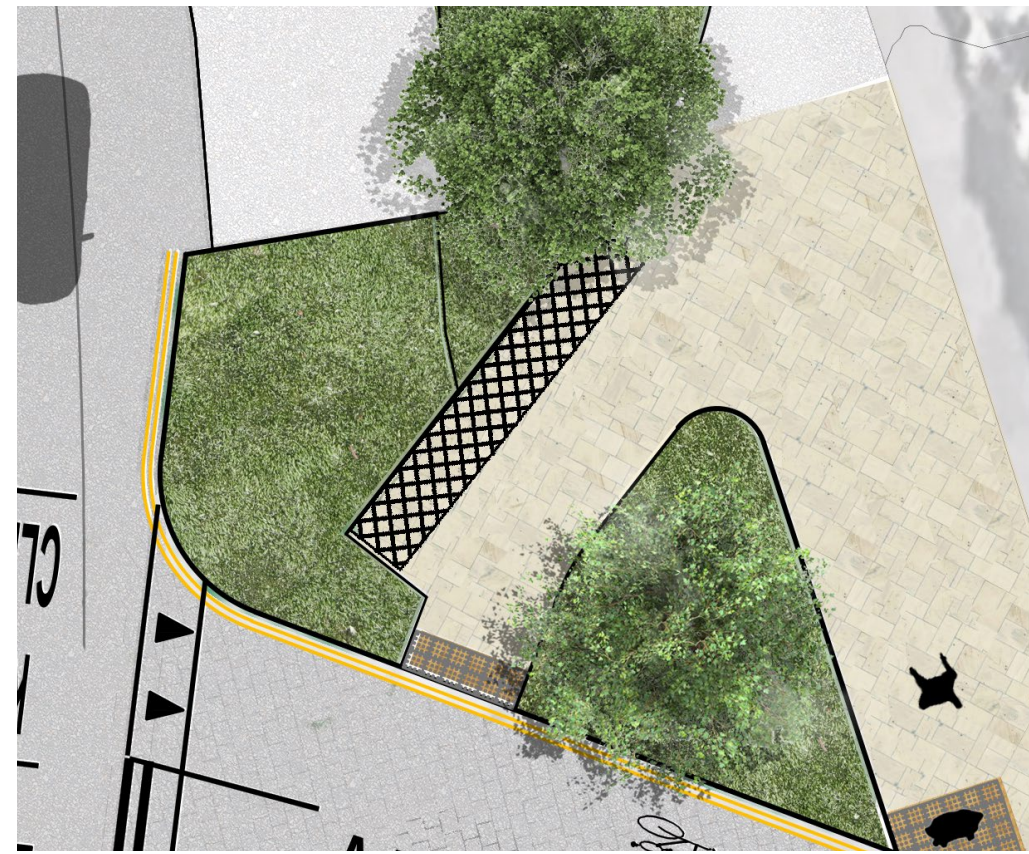
- » **Heritage** will underpin the design, responding to, and enhancing, the local context of the Conservation Area and wider context of Edinburgh.
- » **Nature** requires a consideration of the Water of Leith and its ecology, enhancing the existing greenery to soften the space and screen the road. Design proposals include planters, sensory flowerbeds and tree canopies.
- » **Community** awareness encourages the provision of community amenities, such as the new community notice board, cycle parking, and seating to encourage local use.
- » **Recreation** incorporates suggestions for flexible space that caters for events throughout the year, such as a farmers market, play interaction with hopscotch insets and the viewing platform.

Questions, see questionnaire on the back:

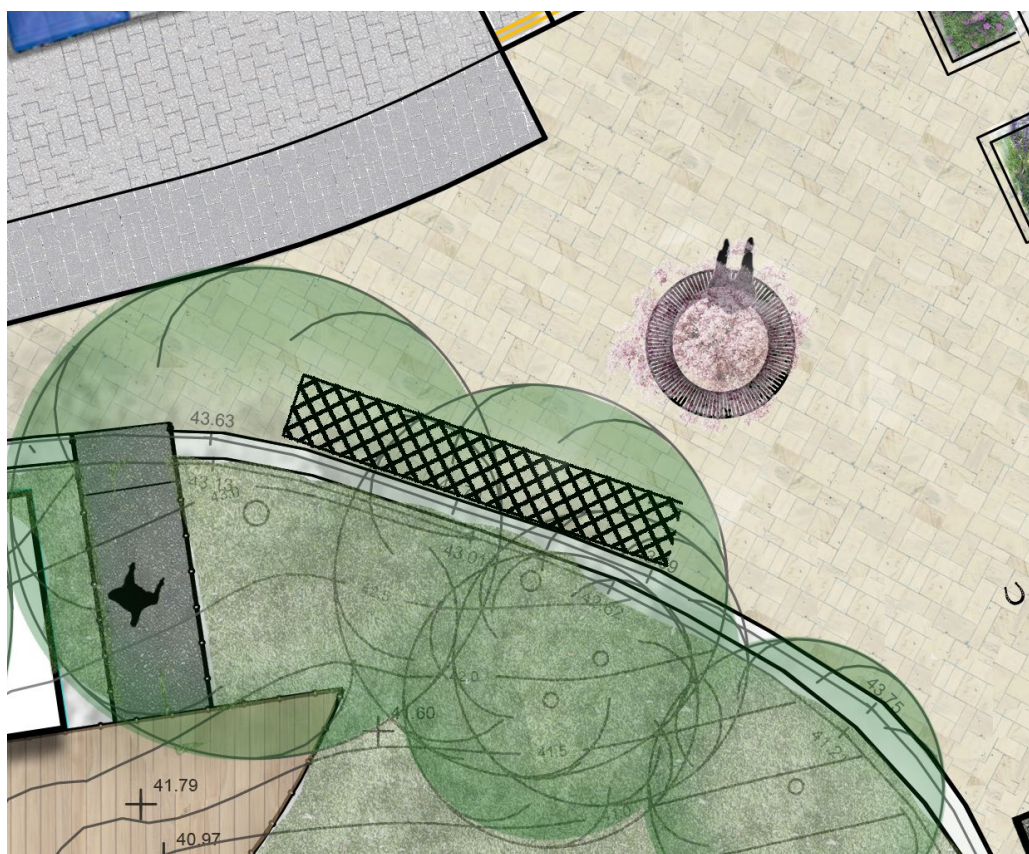
- What (if any) is your favourite part of these proposals?
- What (if any) is your least favourite part of these proposals?

DESIGN OPTIONS

Option A - Communal Bins Location



Option B - Communal Bins Location



Proposed Communal Bin Location

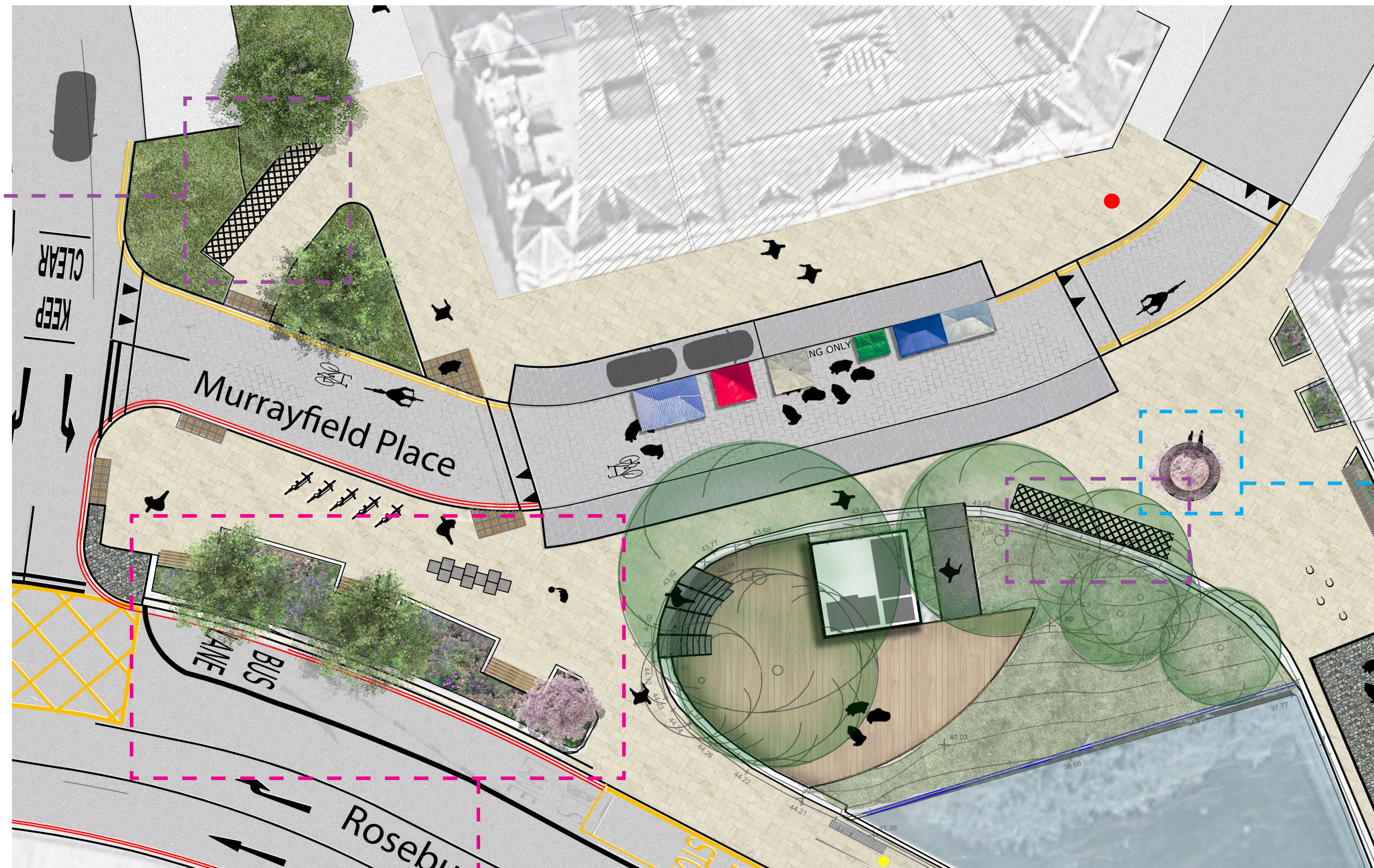
There are two potential locations for the communal bins:

Option A

Is on Murrayfield Place and is the Council's preferred location as it has less of an impact on the quality of the public realm space; and

Option B

To the north of the Old Bridge.



Option A - Rectangular Planter

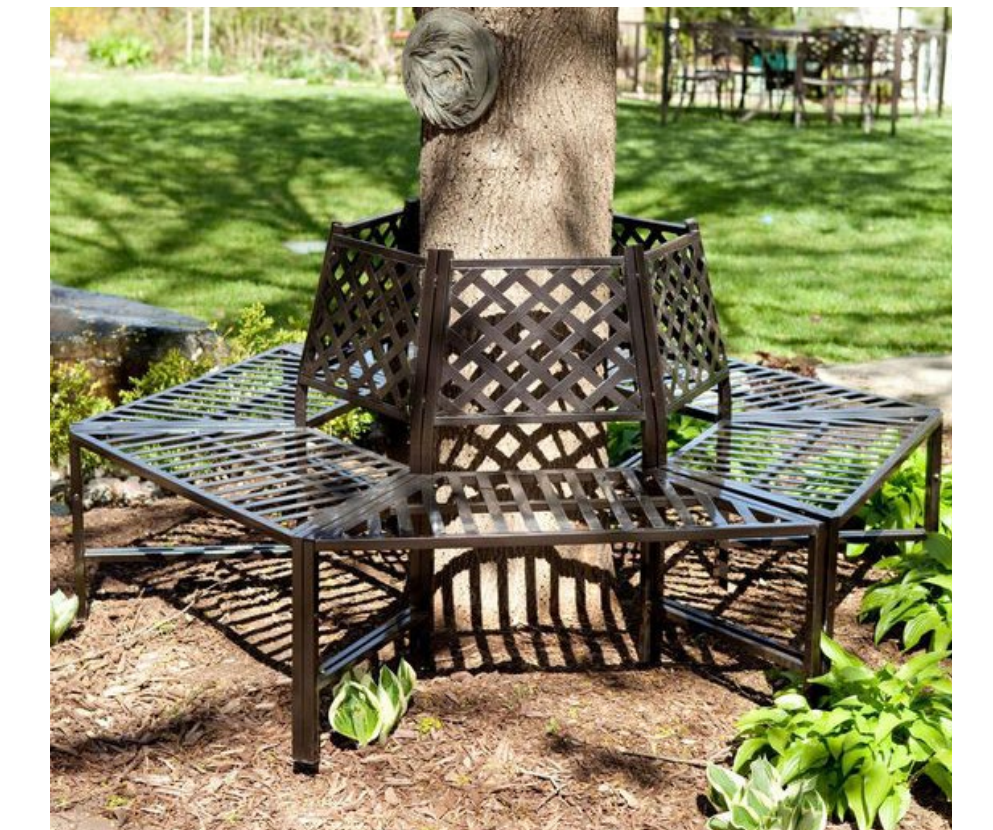


The proposed planter will help soften the built environment and will include seating along the planter. It will also provide separation between the vehicles and pedestrians.

Option B - Curved Planter



Option A - Tree with public seating



Public Seating Area

Underneath the Cherry tree, allowing people to sit and spend time in the new open space.

Option B - Artistic Signpost



Artistic Signpost

At this location an alternative option would be for a heritage style directional sign post. The post could incorporate artist metal work relating to the site and creating a sense of place.

Questions, see questionnaire on the back:

- The preferred location for the communal bins is Option A, on Murrayfield Avenue. However there is an alternative location, Option B, at the North side of the Old Coltbridge. Which of these options do you prefer?
- To the north of the Old Coltbridge, we could either plant a tree with public seating, or install an artistic signpost. Which of these options would you prefer?
- We will be installing a large planter, with seating at the junction of Murrayfield Avenue and Roseburn Terrace. We have two options for this planter, it could have curved, or straight walls. Which do you prefer?

VIEWING PLATFORM

We received suggestions from local residents to introduce public space above the Water of Leith. We have developed a timber platform which responds to this suggestion. The platform will have stepped and ramped access and all of the trees will be retained.

Existing Trees

There are 9 existing trees within the platform area to be surveyed during 2019 to assess their health and condition. The trees are to be incorporated into the viewing platform where the trunks will rise up through the platform and provide shelter under the canopies.

Existing tree species include:

- Lime
- Willow
- Sycamore
- Elm

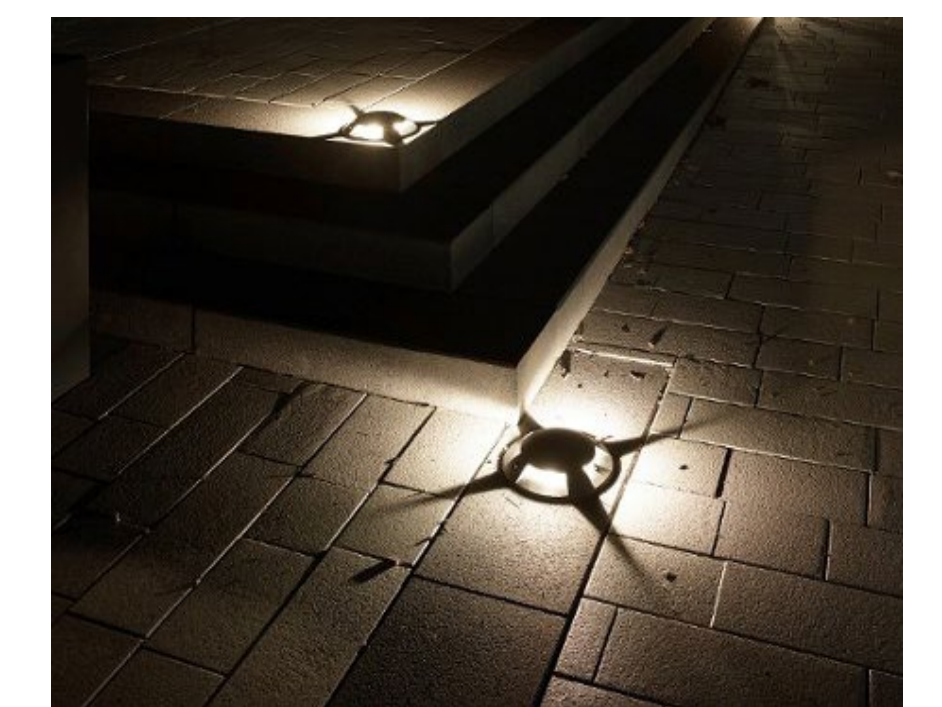


Lighting

LED ground recessed luminaries are a potential option to be placed on the viewing platform. Lighting can help make the space inviting for use at different times of the day, evening and night.



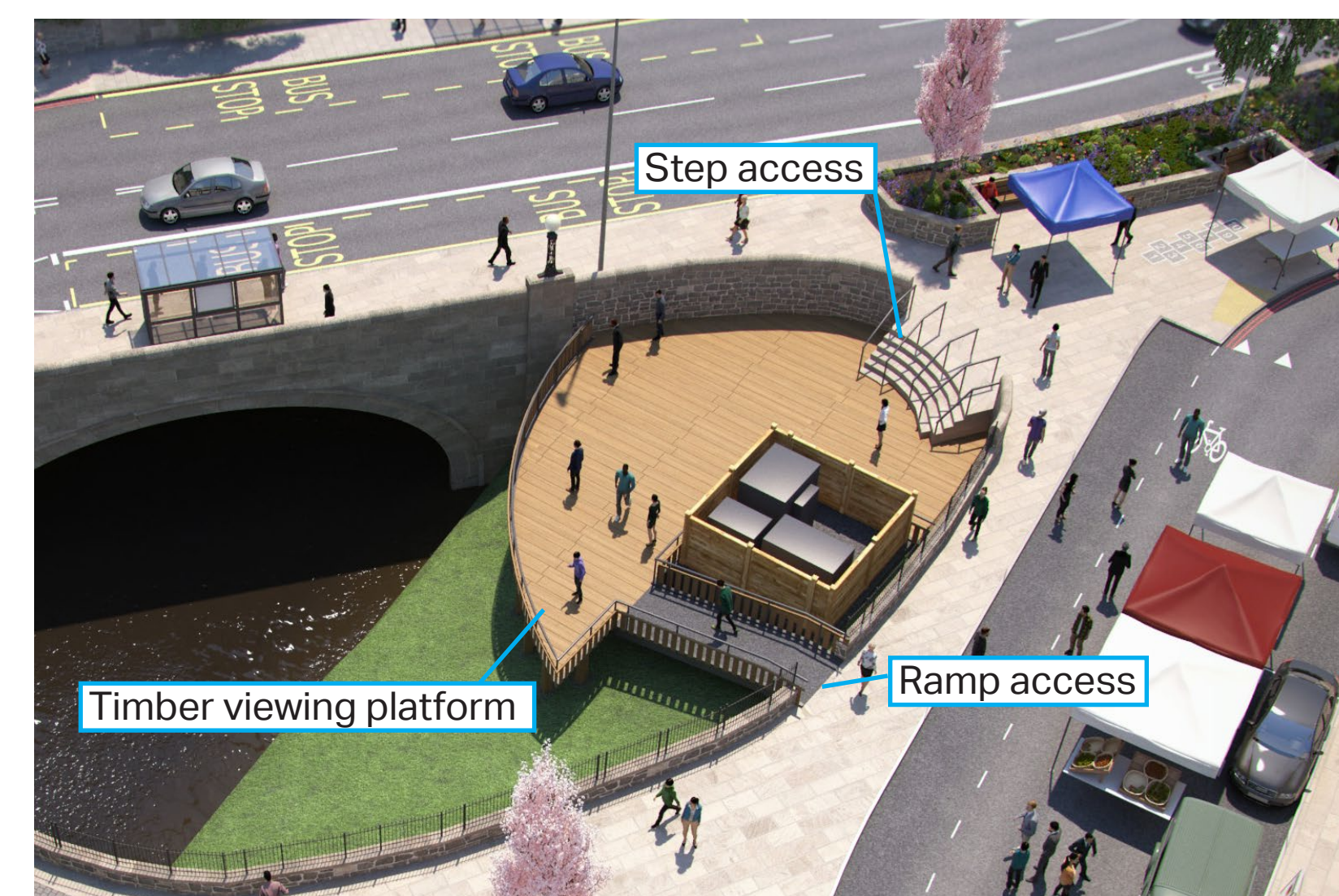
Recessed lighting placed on platform and below the railing.



Ecological Findings (Survey in December 2018)

Protected Species:

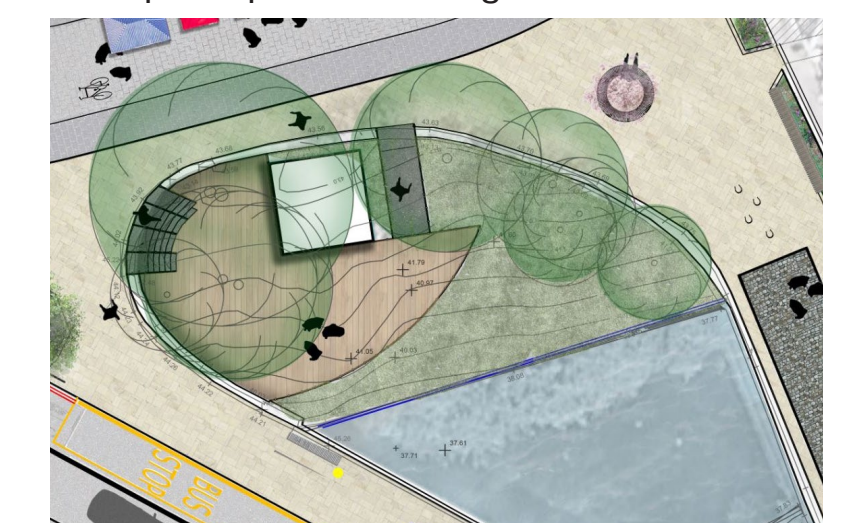
- ⇒ **Bats** - There is potential for bat roosts along the bridge undersides. There is a hole in the tree adjacent to the downstream bridge that could also be used by bats. Spaces like these are considered to have moderate bat roost potential, due to unsuitability of habitat within the area.
- ⇒ **Otters** - Several otter spraints (droppings) were found under the bridges; however, it's unlikely that otters would establish a holt (burrow) by the water within this area. Further surveys will be carried out in 2019.
- ⇒ **Invasive non-native species** - Much of the shrubbery next to the river is cherry laurel (*Prunus Laurocerasus*), this is a non-native species with negative ecological effects that will be removed as part of the works.
- ⇒ We are confident that this project can be delivered without significant impacts on the natural environment.



Viewing platform perspective (shown without trees, to demonstrate steps and ramp access. There is no proposal to remove the trees)



Example of platform railing.



Viewing platform layout

FUTURE USES



Community Planting & Gardening Club

The proposed planting within the Rejuvenating Roseburn scheme seeks to provide not only amenity benefits but ecological benefits too. It is hoped the community will see this as an opportunity for social interaction and to bring people together in sharing common tasks and goals. There is a community group that will take on the coordination and maintenance of the planting within the planters throughout the year.



Outdoor Markets

In addition to the existing shops and services within Roseburn, there's an opportunity to provide space for more local and seasonal markets that could support vendors, crafts people and local businesses. A monthly or weekend market could bring new visitors and opportunities to the local area, creating a greater sense of place.



Information on the consultation:

The Rejuvenating Roseburn public consultation will run from the 2nd of April until the 7th of May 2019.

The consultation will be delivered in a number of ways:

- ⇒ Two on site consultation events which will be held on the Old Coltbridge in Roseburn on the 2nd and 30th of April between 1pm and 6pm; (please see the location plan below).
- ⇒ We will also be attending the Murrayfield Community Council meeting on the 2nd of April at 2B Ormidale Terrace, Edinburgh EH12 6EQ
- ⇒ Printed copies of the consultation information and questionnaires will be delivered via a letter drop to local residents and businesses by the 2nd of April. Completed questionnaires may be returned in person, or by post to:

Rurighd McMeddes
G.4 Transport Networks
Waverley Court
EH8 8BG

Or in person to:
The Roseburn Bar
1 Roseburn Terrace,
Edinburgh EH12 5NG

- ⇒ An online consultation via the City of Edinburgh Council Hub

<https://consultationhub.edinburgh.gov.uk/sfc/rejuvenating-roseburn>

- ⇒ Results of the consultation will be presented to the Murrayfield Community Council meeting on the 14th of May with wider feedback provided through the City of Edinburgh Council Hub website.

If you'd like to receive regular updates about the CCWEL project's progress and ways to be involved please contact:

Rurighd.mcmeddes@edinburgh.gov.uk

- Location of on-site public consultation events. (Old Coltbridge)



REJUVENATING ROSEBURN

DELIVERING THE ROSEBURN ACTION PLAN



We have been working in partnership with Murrayfield Community Council since 2017 to deliver the aspirations of the Roseburn Action Plan, alongside further community engagement to develop transformational designs for Roseburn. We'd love to hear what you think.

Tell us your thoughts...

1. In general, to what extent do you support or oppose these proposals?

Strongly support ☐ Support ☐ Neither support nor oppose ☐ Oppose ☐ Strongly oppose ☐

2. To what extent do you think these proposals will enhance the amenity of the Roseburn area?

Greatly enhance ☐ Enhance ☐ Neither enhance nor worsen ☐ Worsen ☐ Greatly worsen ☐

3. To what extent do you think these proposals enhance the amenity value of the Water of Leith in Roseburn?

Greatly enhance ☐ Enhance ☐ Neither enhance nor worsen ☐ Worsen ☐ Greatly worsen ☐

4. To what extent do you support or oppose the introduction of a Viewing Platform over the Water of Leith as shown in the designs? Please provide comments below.

Strongly support ☐ Support ☐ Neither support nor oppose ☐ Oppose ☐ Strongly oppose ☐

5. What (if any) is your favourite part of these proposals?

6. What (if any) is your least favourite part of these proposals?

7. The preferred location for the Communal bins is Option A, on Murrayfield Place. However there is an alternative location, Option B, at the north side of the Bridge. Which of these options do you prefer?

Option A ☐ Option B ☐

8. To the north of the Old Coltbridge, we could either plant a tree with public seating, or install an artistic signpost. Which of these options would you prefer?

Plant a tree ☐ Artistic signpost ☐

9. We will be installing a large planter, with seating at the junction of Murrayfield Avenue and Roseburn Terrace. We have two options for this planter, it could have curved, or rectangular walls. Which do you prefer?

Straight walls ☐ Curved walls ☐

10. Several local people have already volunteered to be involved in looking after the new planters. Would you be interested in helping to look after these planters, and if so, are you happy for us to pass on your contact details for this purpose?

Yes ☐ No ☐

11. Do you have any other comments, or is there anything else that you would like to see in this place?

Please provide your post code:

Business name or

organisation if applicable:

Please provide your email address if you would like to receive results of this consultation:

Please tick here if you would like to be added to our Mailing List to be kept up to date with the CCWEL project.

☐

We are delivering this project in partnership with Sustrans Scotland and design consultants AECOM and any information shared with us will be used to inform the development of this project and may be shared with them. We are relying on the condition of processing in Article 6(1)(e) of GDPR "public task" for collecting and processing this data. At the end of the project all records will be permanently removed, this will take place before the end of 2022. If you wish to be removed from the subscription list or have any of your details removed or amended, then please contact the project Stakeholder Liaison Officer – Rurighd.McMeddes@edinburgh.gov.uk. You can view the Council's General Privacy Policy on our website. You can also contact the Council's Data Protection Officer Kevin Wilbraham – Kevin.Wilbraham@edinburgh.gov.uk or the UK Information Commissioner