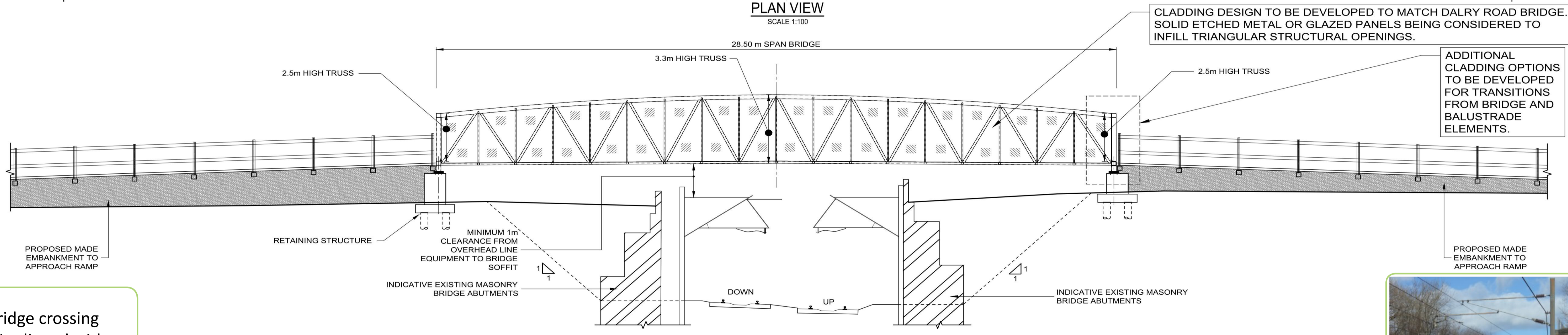
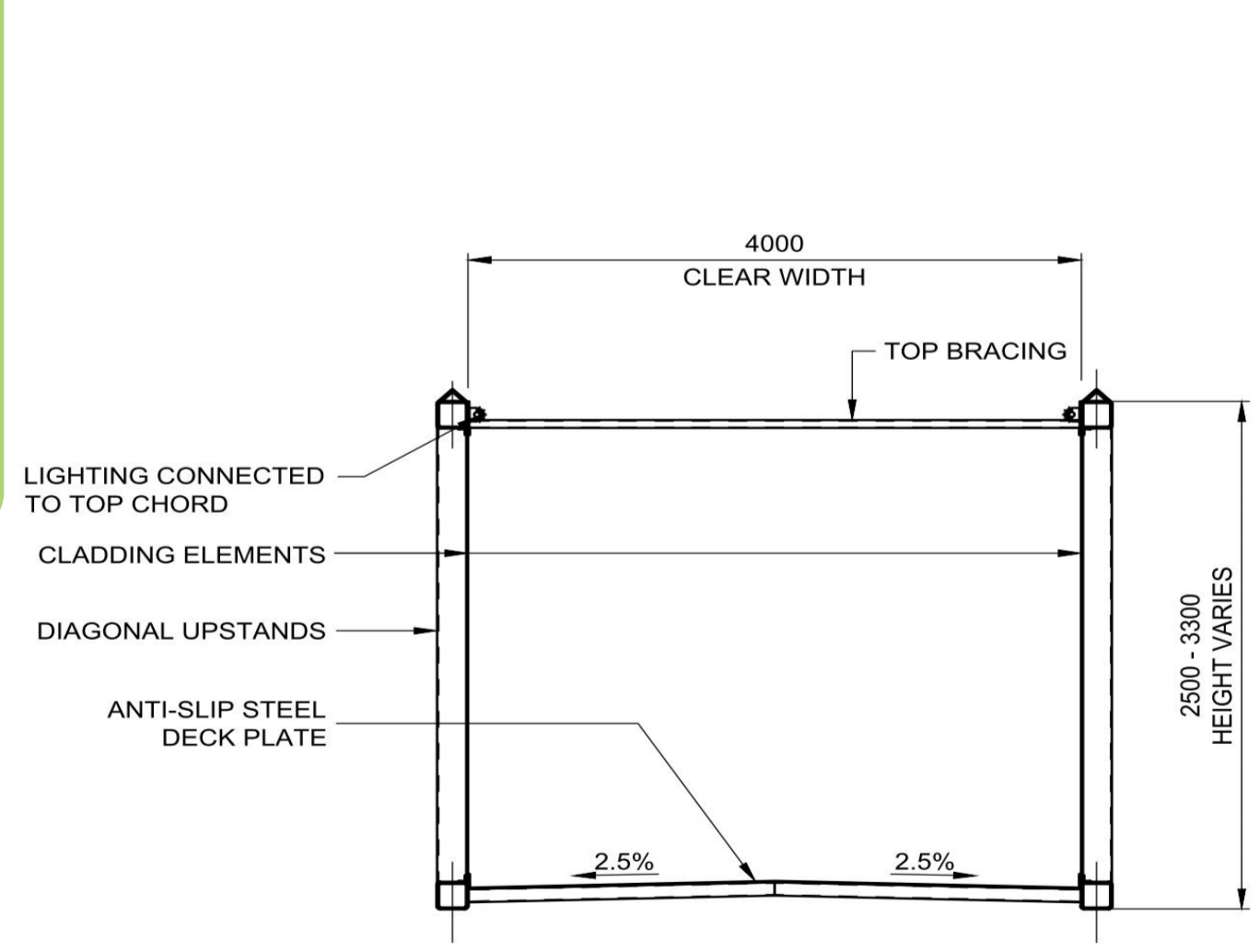


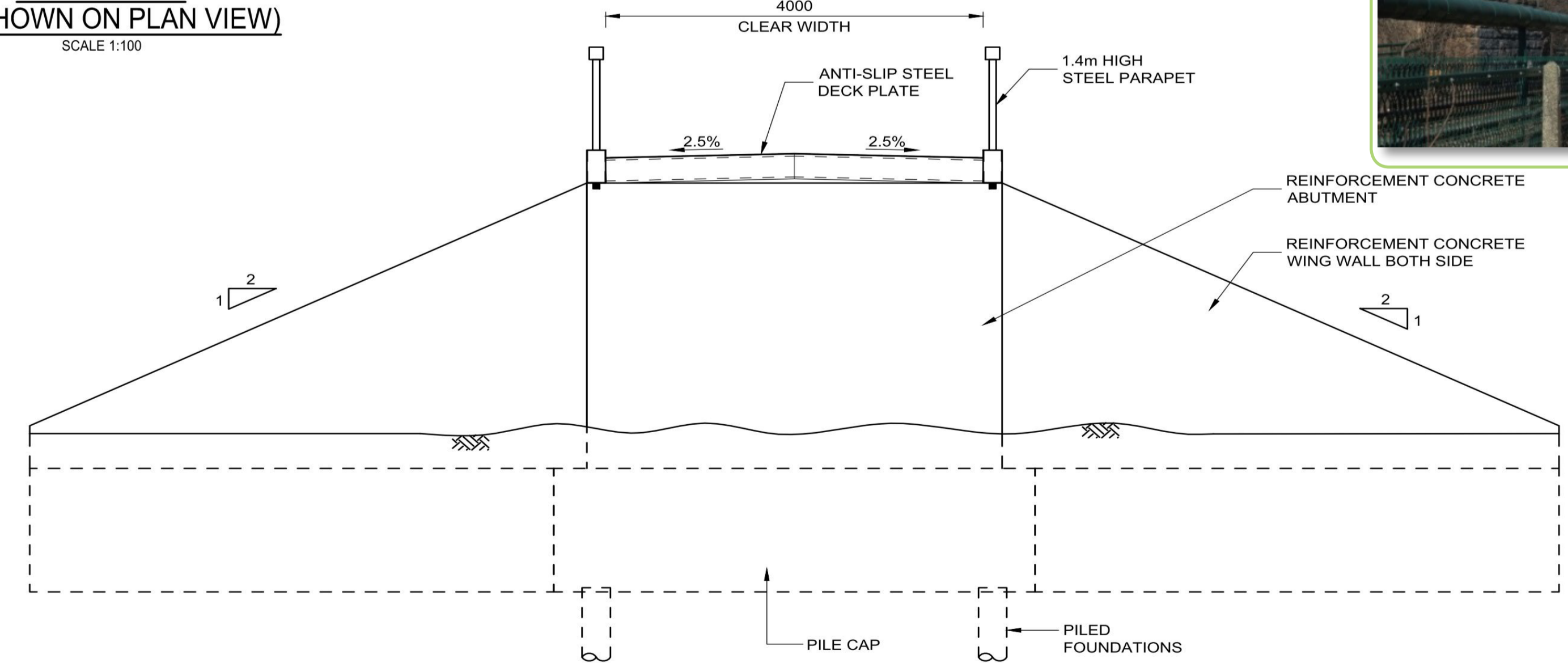
**PLAN VIEW**  
SCALE 1:100



**SECTION A-A**  
(AS SHOWN ON PLAN VIEW)  
SCALE 1:100



**BRIDGE TYPICAL SECTION**  
SCALE 1:50



**SECTION B-B**  
(AS SHOWN ON PLAN VIEW)  
SCALE 1:50



The proposed new bridge crossing over the railway line is aligned with the historical rail bridge crossing at this location. The crossing will be suitable for pedestrians and cyclists.

The proposed bridge location and alignment makes best use of the existing embankment, therefore minimising earthworks.