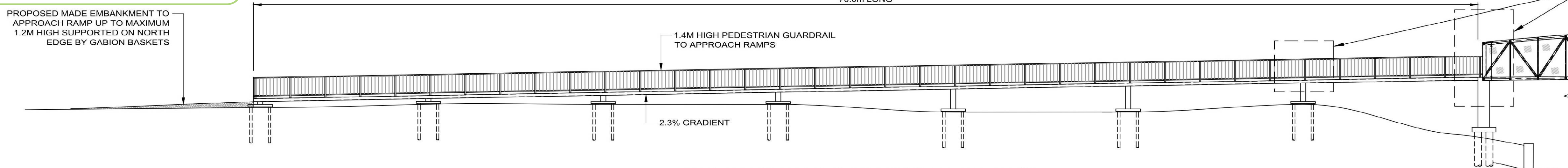


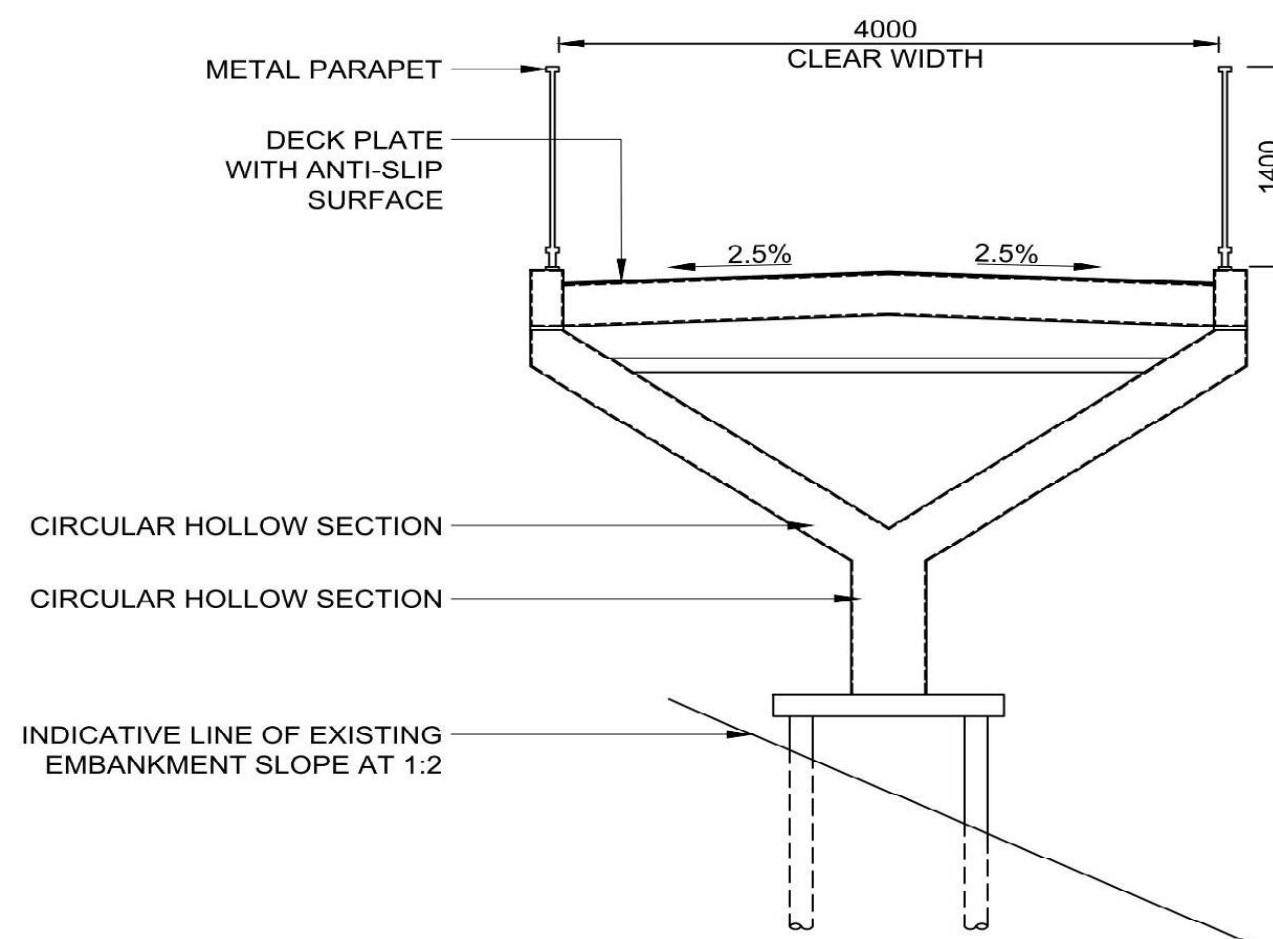
The proposed option is an elevated structure over both the east and west embankments leading to the new Dalry Road crossing.

The removal of existing trees on the embankments would be necessary to accommodate the elevated cycleways. There is the potential to replace this loss with new light foliage.

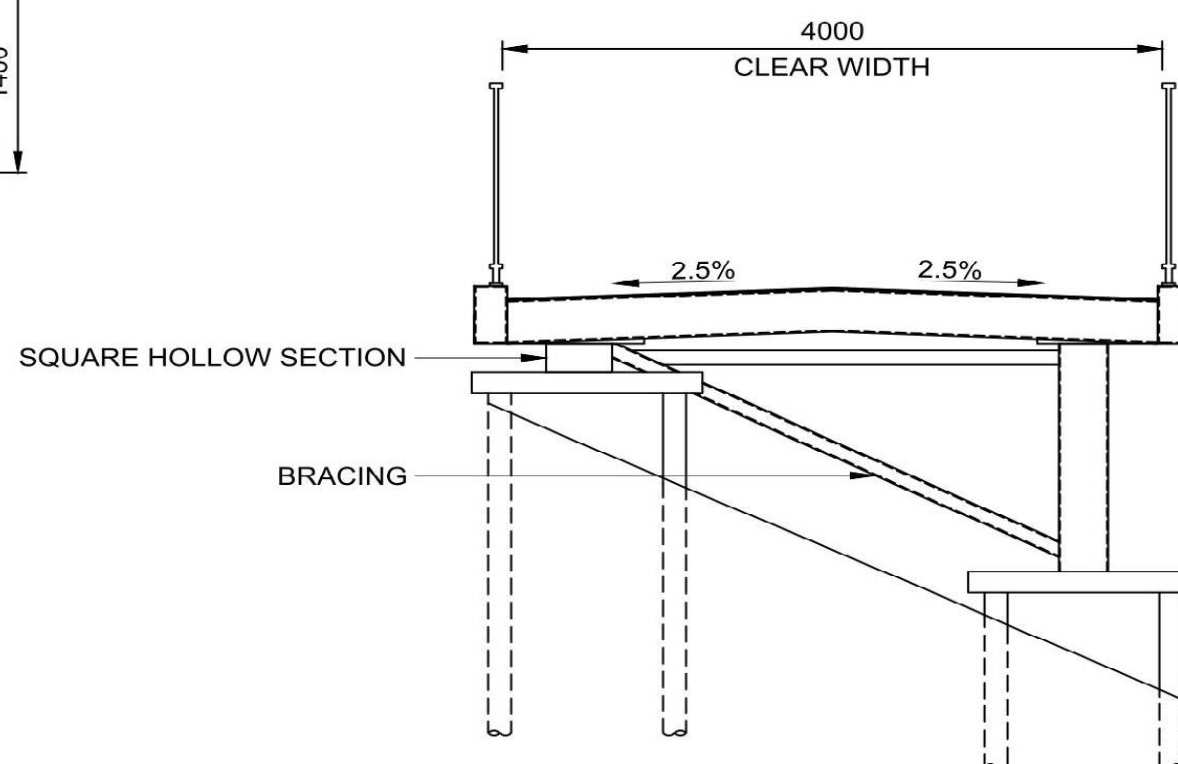
PROPOSED MADE EMBANKMENT TO APPROACH RAMP UP TO MAXIMUM 1.2M HIGH SUPPORTED ON NORTH EDGE BY GABION BASKETS



ADDITIONAL CLADDING OPTIONS TO BE DEVELOPED FOR TRANSITIONS FROM BRIDGE AND BALUSTRADE ELEMENTS.

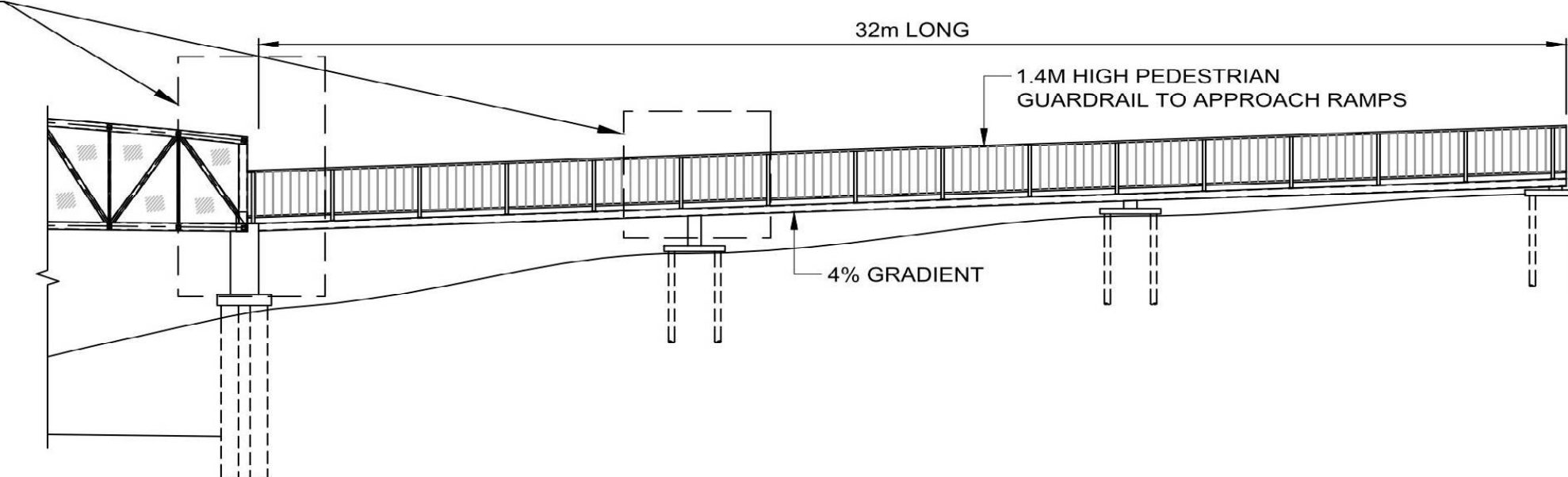


EAST ELEVATED CYCLEWAY TYPICAL CROSS SECTION



WEST ELEVATED CYCLEWAY TYPICAL CROSS SECTION

ADDITIONAL CLADDING OPTIONS TO BE DEVELOPED FOR TRANSITIONS FROM BRIDGE AND BALUSTRADE ELEMENTS.

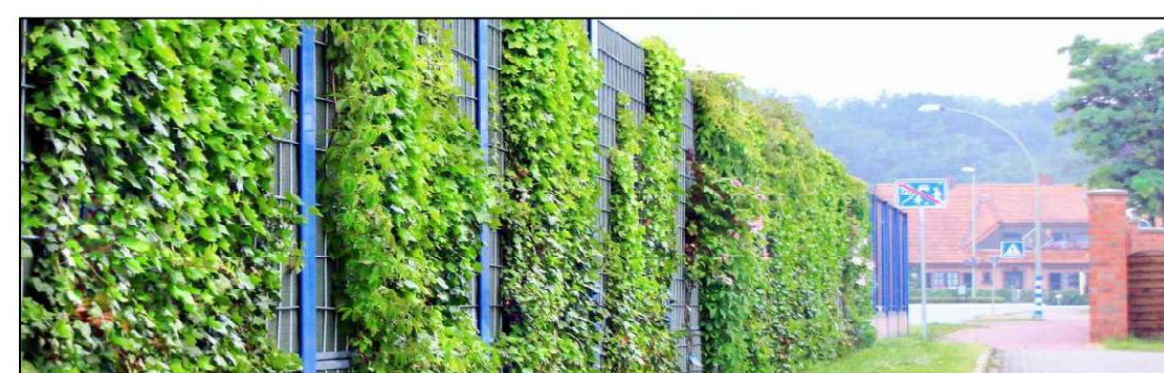


EAST ELEVATED CYCLEWAY SOUTH ELEVATION

In order enhance existing conditions for residential properties along Downfield Place, it is proposed that a sound barrier is installed between the West Approach Road and the cycleway. Some potential options are illustrated here.



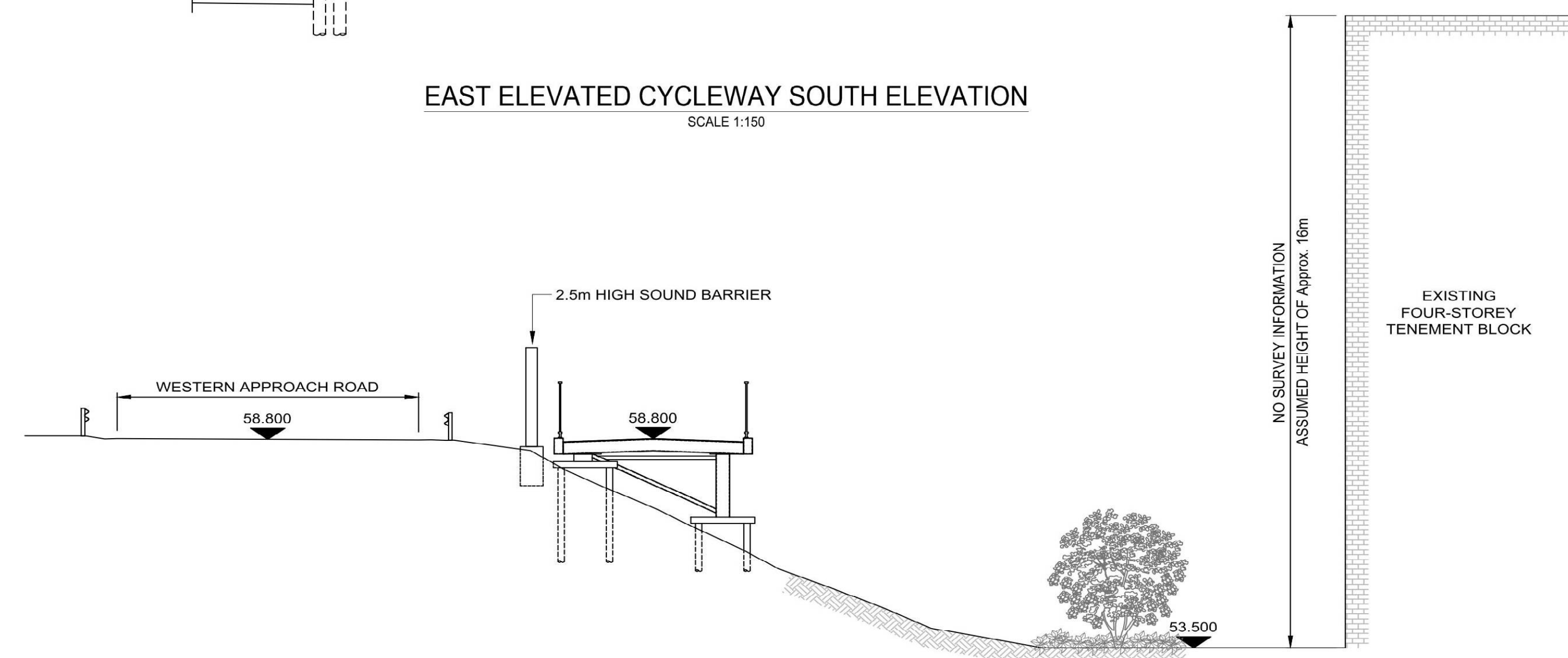
CONCRETE SOUND BARRIER EXAMPLE



PLANTED SOUND BARRIER EXAMPLE



METAL SOUND BARRIER EXAMPLE



ELEVATION A-A THROUGH WEST CYCLEWAY

NO SURVEY INFORMATION ASSUMED HEIGHT OF APPROX. 16m

EXISTING FOUR-STOREY TENEMENT BLOCK