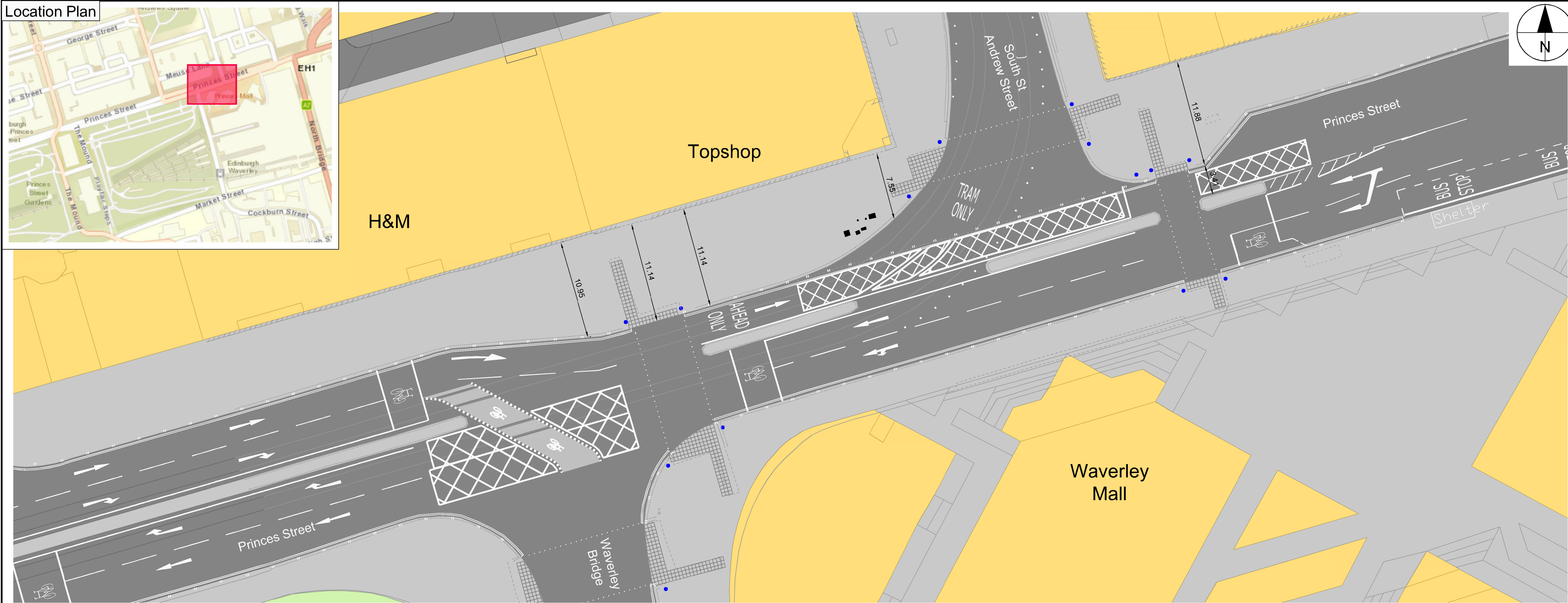
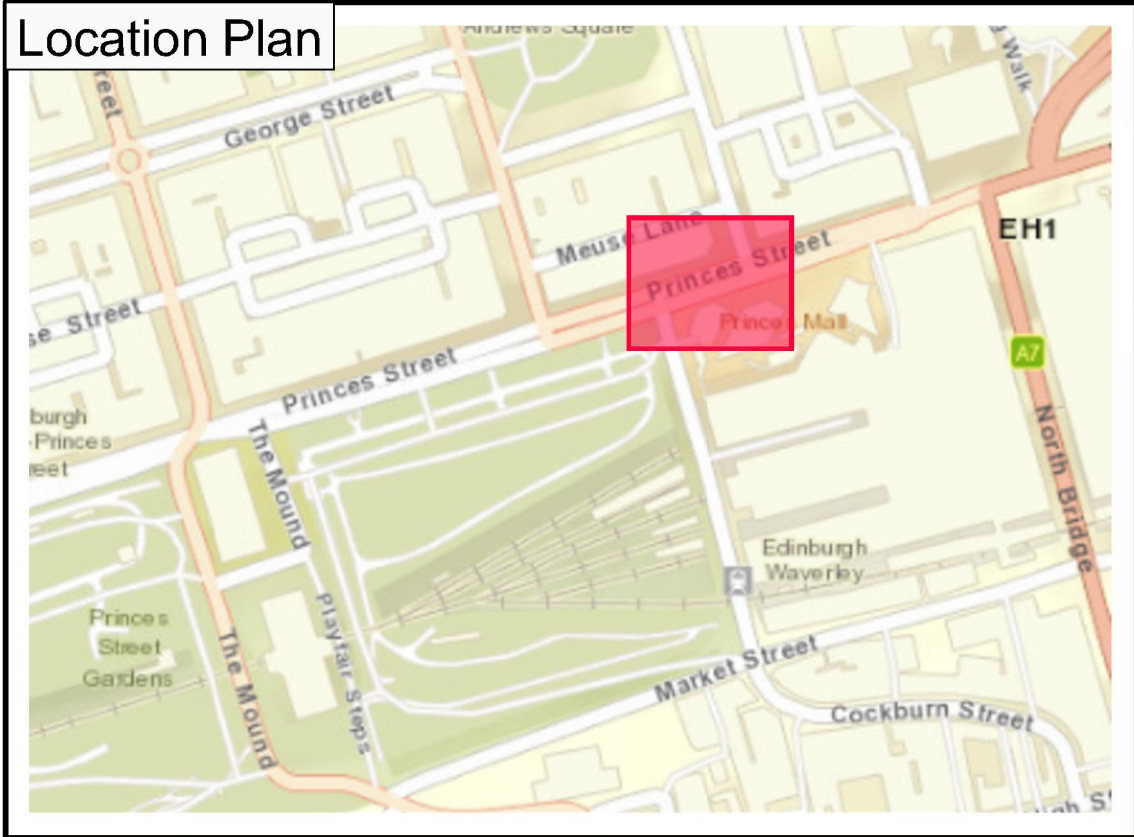
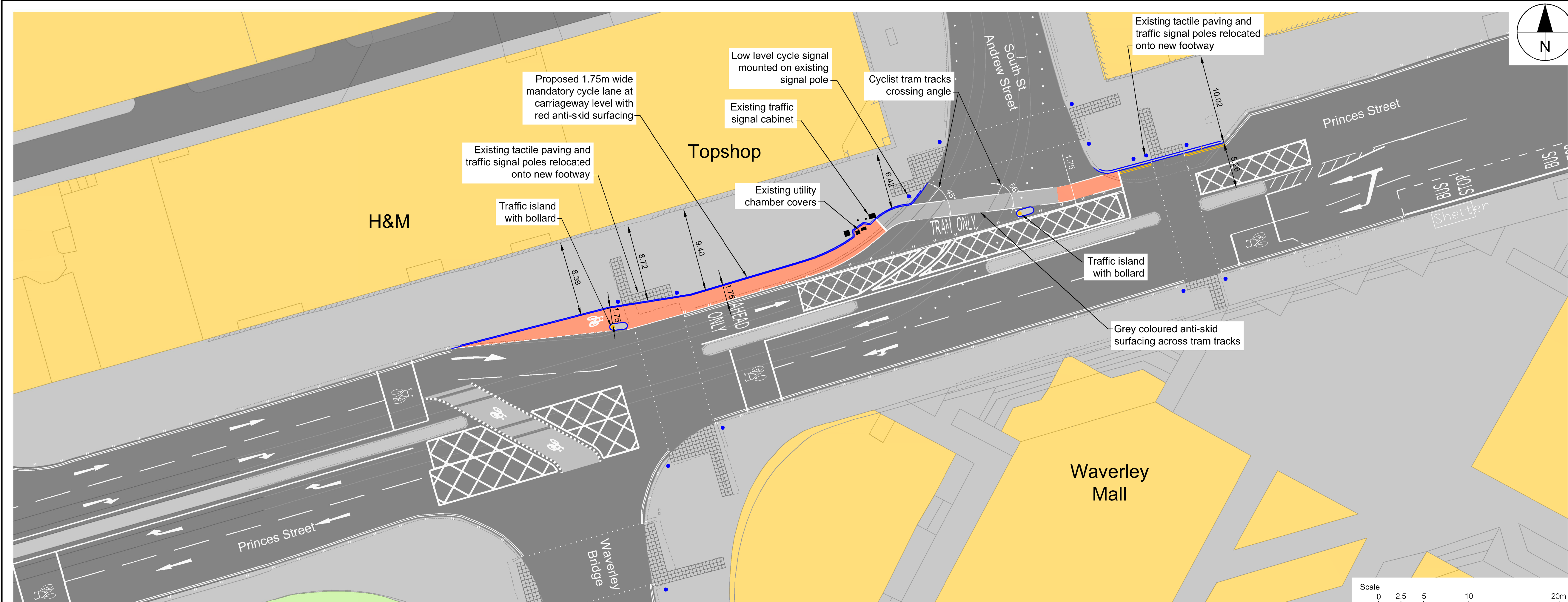


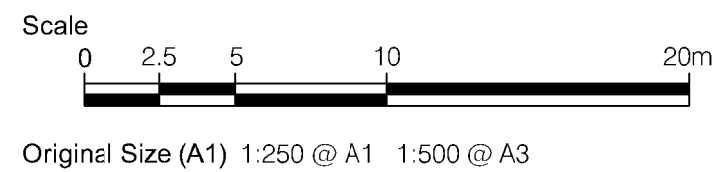
File name: F:\PROJECTS\TRAFFIC - CEC WALK CYCLE WP\103 EXECUTION\CAD\20-SHEETS\4.0 - TRAM\4.2.1\PUBLIC CONSULTATION PLANS\60487449-DD-C-WP1-4.2.1-2001.DWG
Last saved by: NESSUK Last Plotted: 2016-03-12
ISO A1 894mm x 841mm
Approved: PM
Checked: WP
Designer: JN
Project Management Initials:



Existing Layout



Proposed Layout



AECOM

PROJECT

CYCLE AND WALKING IMPROVEMENTS ON TRAM ROUTE

CLIENT

EDINBURGH
THE CITY OF EDINBURGH COUNCIL

CONSULTANT

AECOM
1 Tanfield
EDINBURGH, EH3 5DA
+44 (0) 131 301 8600 tel
+44 (0) 131 301 8699 fax
www.aecom.com

NOTES

- Key
- New kerbline
 - Road markings
 - Road
 - Footway
 - Mandatory cycle lane
 - Building
 - Tactile paving - controlled
 - Traffic signal pole
 - Traffic bollard

SHEET TITLE

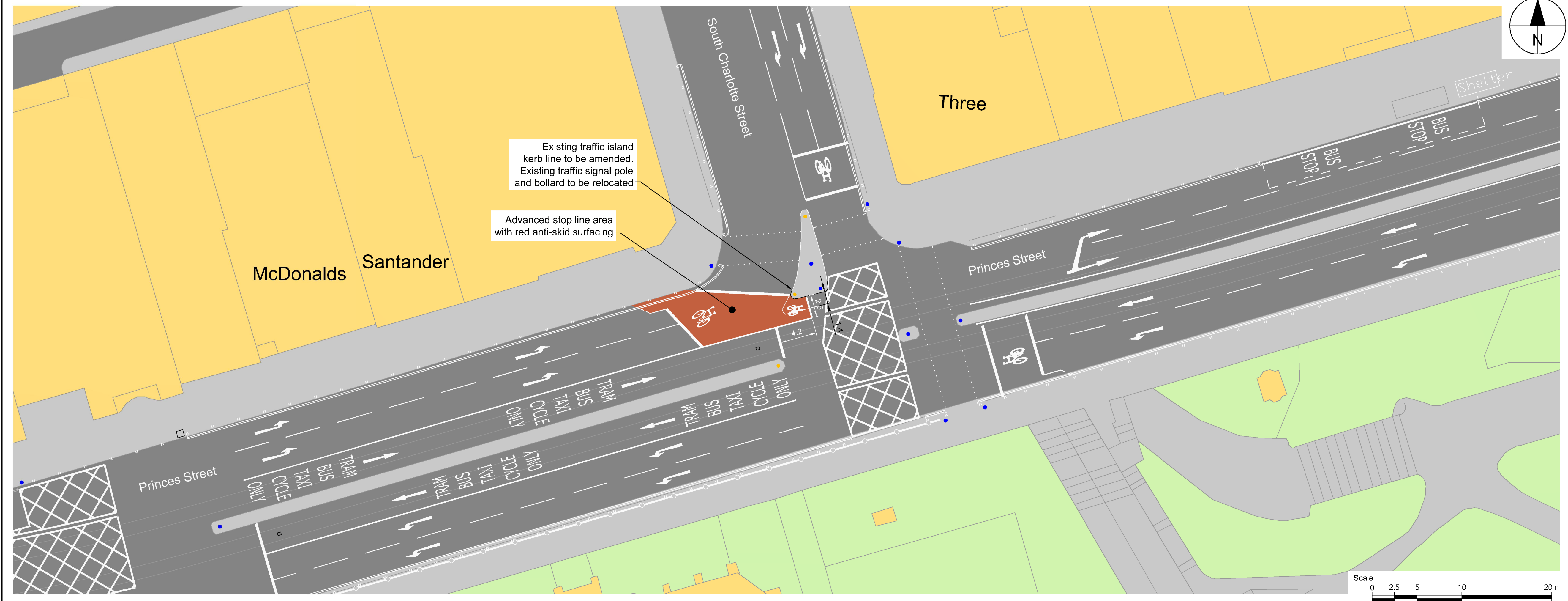
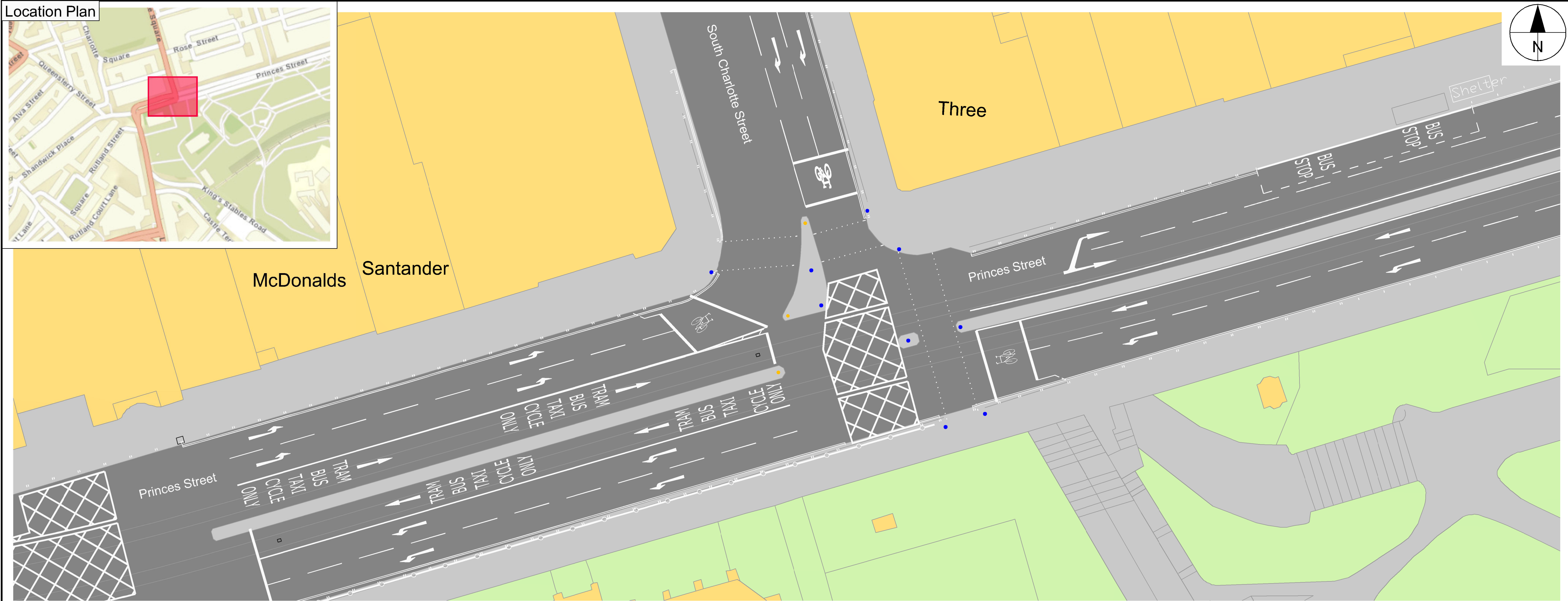
**4.2.1 PRINCES STREET/
SOUTH ST ANDREW STREET
PUBLIC CONSULTATION PLAN**

60487449-DD-C-WP1-4.2.1-2001

This drawing has been prepared for the use of AECOM's client. It may not be used, modified, reproduced or relied upon by third parties, except as agreed by AECOM or as required by law. AECOM accepts no responsibility, and denies any liability, whatsoever, to any party that uses or relies on this drawing without AECOM's express written consent. Do not scale this document. All measurements must be obtained from the stated dimensions.

ISO A1 894mm x 841mm
Approved: PM
Checked: WP
Designer: JN
Project Management Initials:

Filename: F:\PROJECTS\TRAFFIC - CEC WALK CYCLE WP\103 EXECUTION\CAD\20-SHEETS\4.0 - TRAM\4.2.6 PUBLIC CONSULTATION PLANS\60487449-DD-C-WP1-4.2.6-2001.DWG
Last saved by: NESSUK
Last Plotted: 2016-03-12



AECOM

PROJECT

CYCLE AND WALKING IMPROVEMENTS ON TRAM ROUTE

CLIENT

EDINBURGH
THE CITY OF EDINBURGH COUNCIL

CONSULTANT

AECOM
1 Tanfield
EDINBURGH, EH3 5DA
+44 (0) 131 301 8600 tel
+44 (0) 131 301 8699 fax
www.aecom.com

NOTES

Key

- New kerbline
- Road markings
- Road
- Footway
- Cycle lane (red anti-skid surfacing)
- Building
- Traffic signal pole
- Traffic bollard

SHEET TITLE

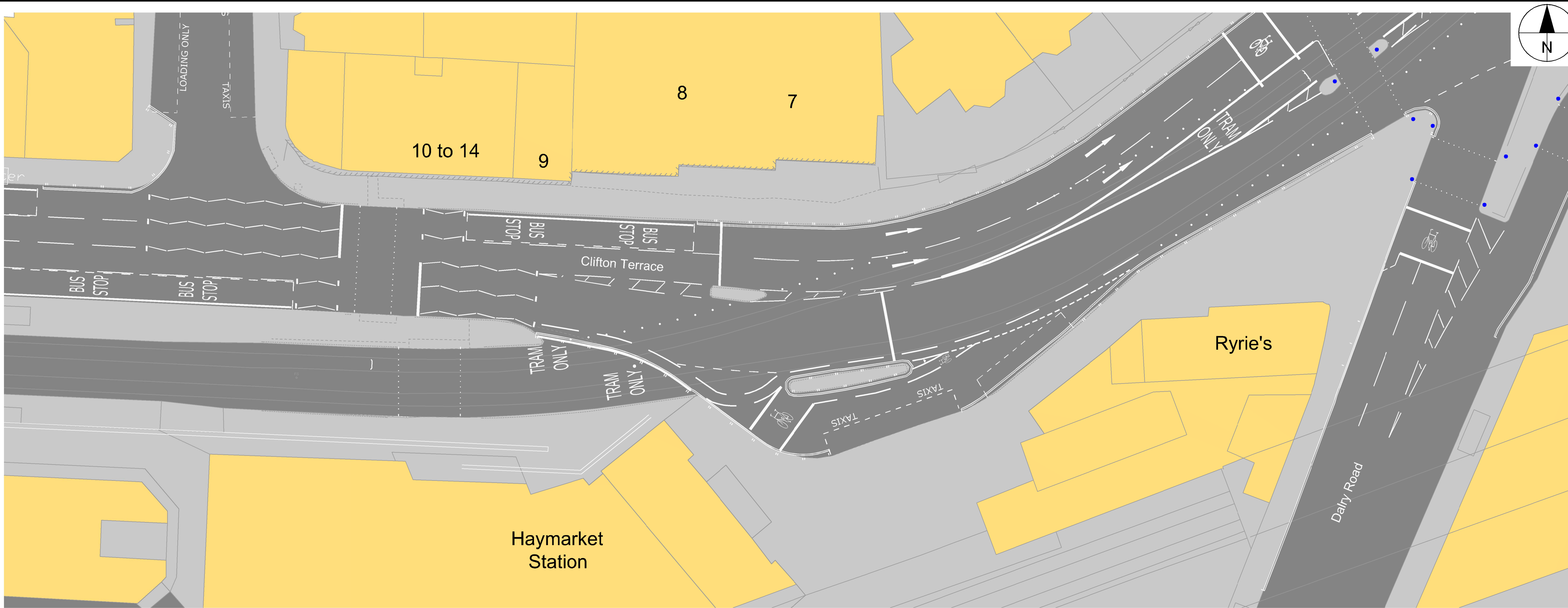
4.2.6 PRINCES STREET/ SOUTH CHARLOTTE STREET PUBLIC CONSULTATION PLAN

60487449-DD-C-WP1-4.2.6-2001

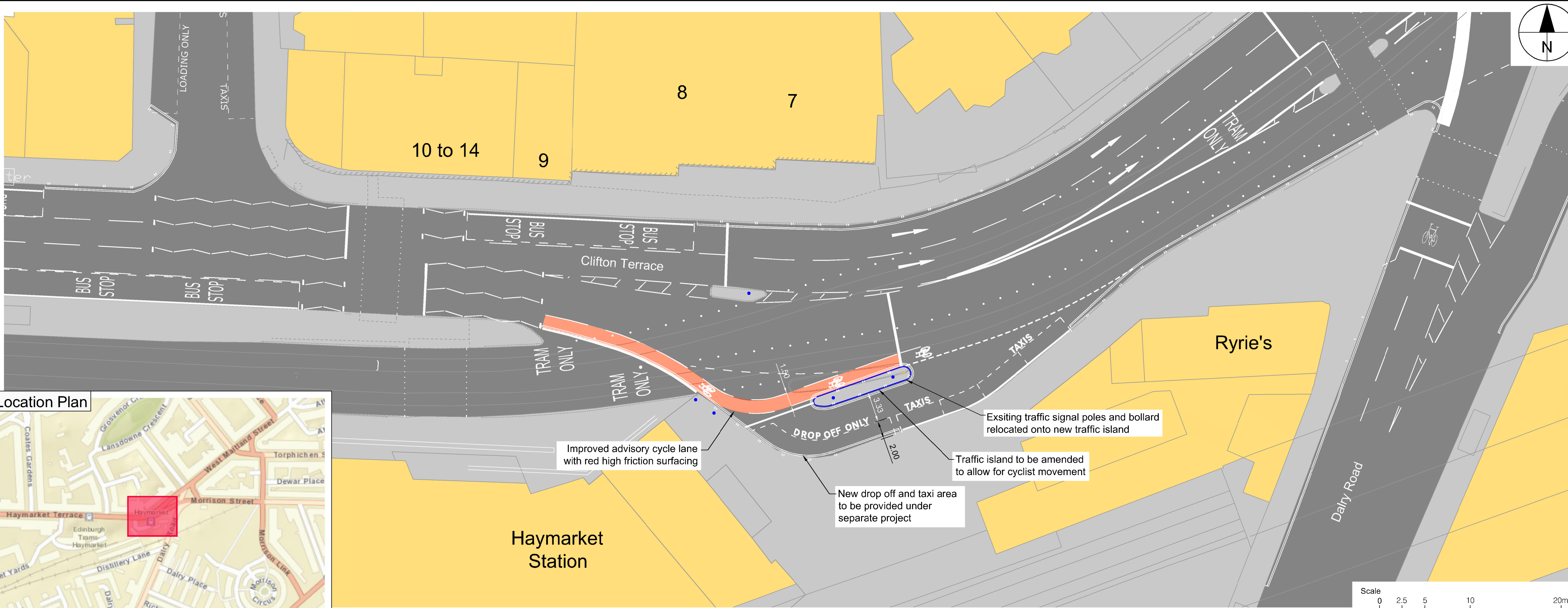
This drawing has been prepared for the use of AECOM's client. It may not be used, modified, reproduced or relied upon by third parties, except as agreed by AECOM or as required by law. AECOM accepts no responsibility, and denies any liability whatsoever, to any party that uses or relies on this drawing without AECOM's express written consent. All measurements must be obtained from the stated dimensions.

ISO A1 894mm x 841mm
Approved: PM
Checked: WP
Designer: JN
Project Management Initials:

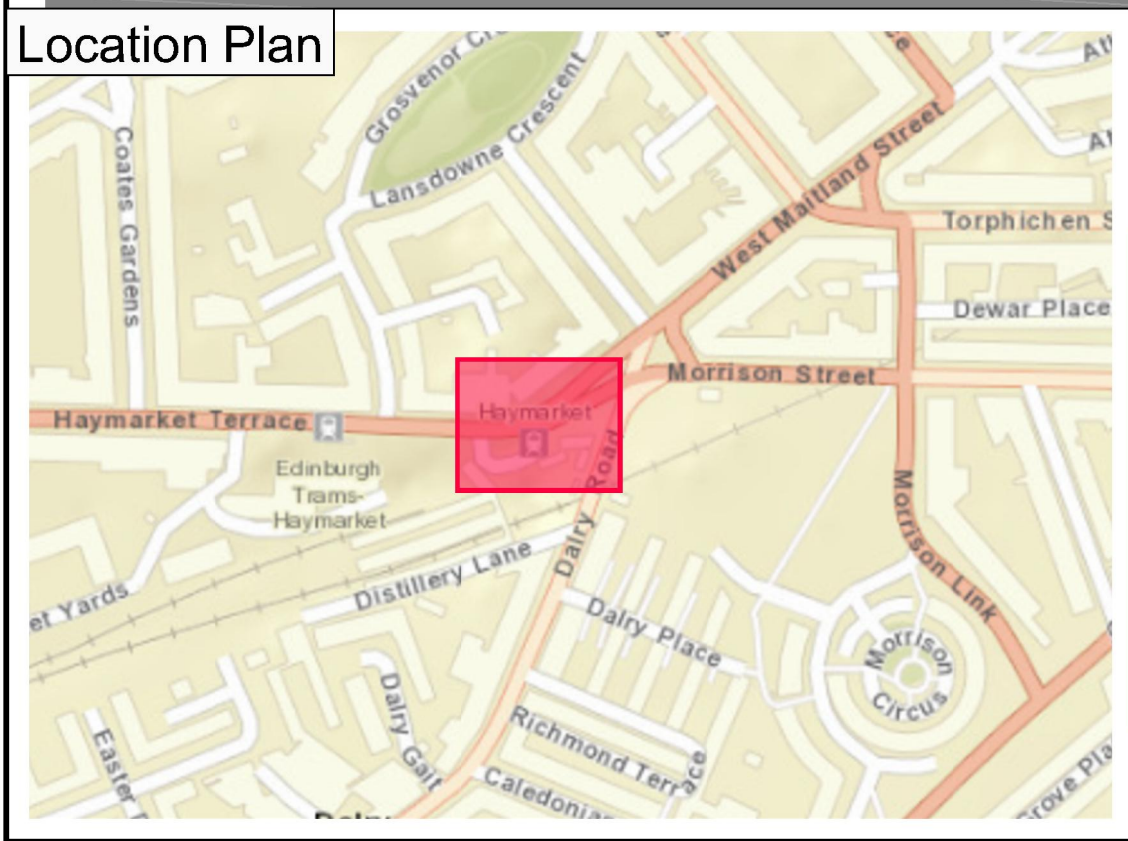
File name: F:\PROJECTS\TRAFFIC - CEC WALK CYCLE WP\103 EXECUTION\CAD\20-SHEETS\4.0 - TRAM\4.2 PUBLIC CONSULTATION PLANS\60487449-DD-C-WP1-4.4.2-2001.DWG
Last saved by: JESSUK
Last plotted: 2016-03-12



Existing Layout



Proposed Layout



AECOM

PROJECT

CYCLE AND WALKING IMPROVEMENTS ON TRAM ROUTE

CLIENT

EDINBURGH

THE CITY OF EDINBURGH COUNCIL

CONSULTANT

AECOM
1 Tanfield
EDINBURGH, EH3 5DA
+44 (0) 131 301 8600 tel
+44 (0) 131 301 8699 fax
www.aecom.com

NOTES

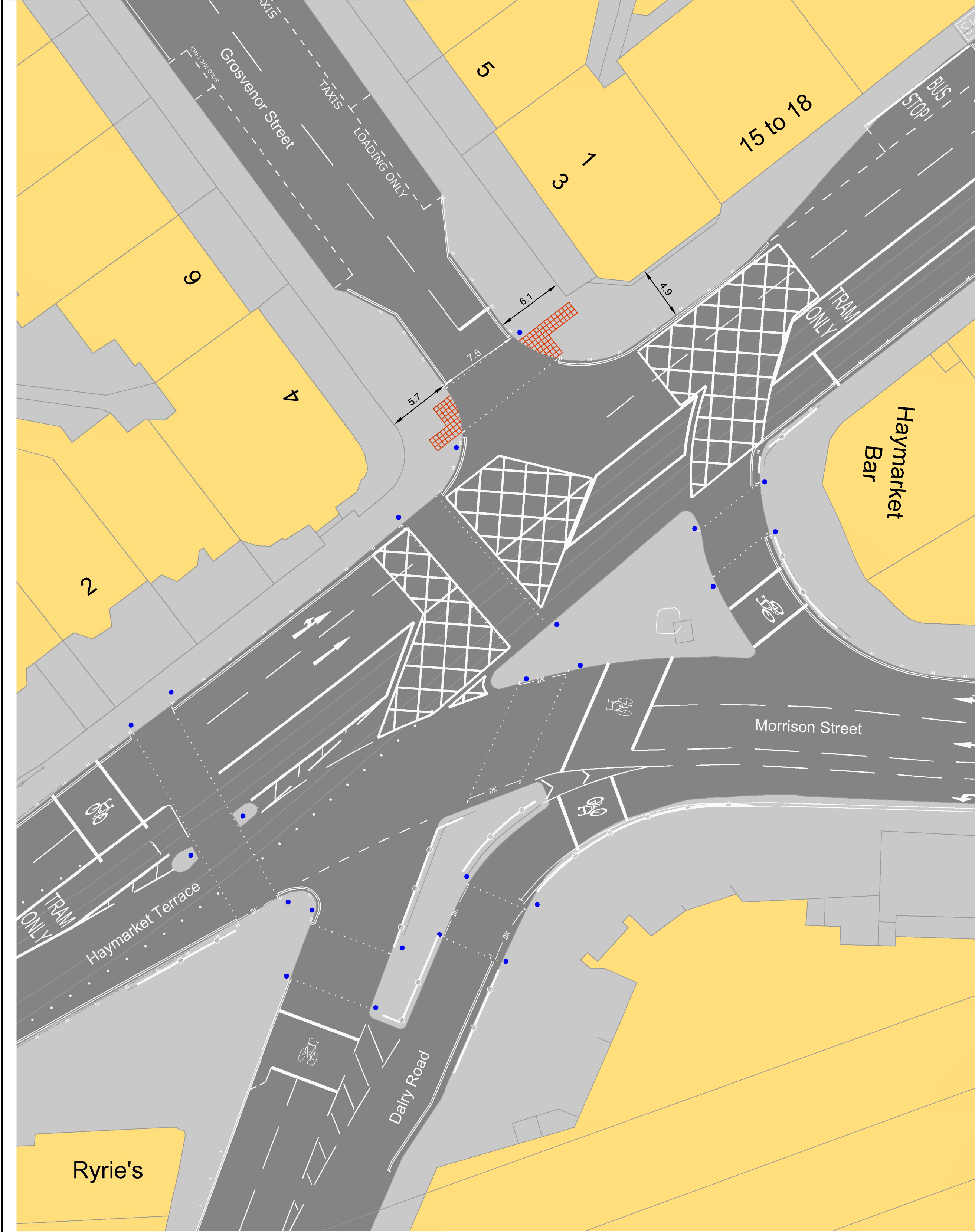
- Key
- New kerbline
 - Road markings
 - Road
 - Footway
 - Cycle lane (red anti-skid surfacing)
 - Building
 - Traffic signal pole
 - Traffic bollard

SHEET TITLE

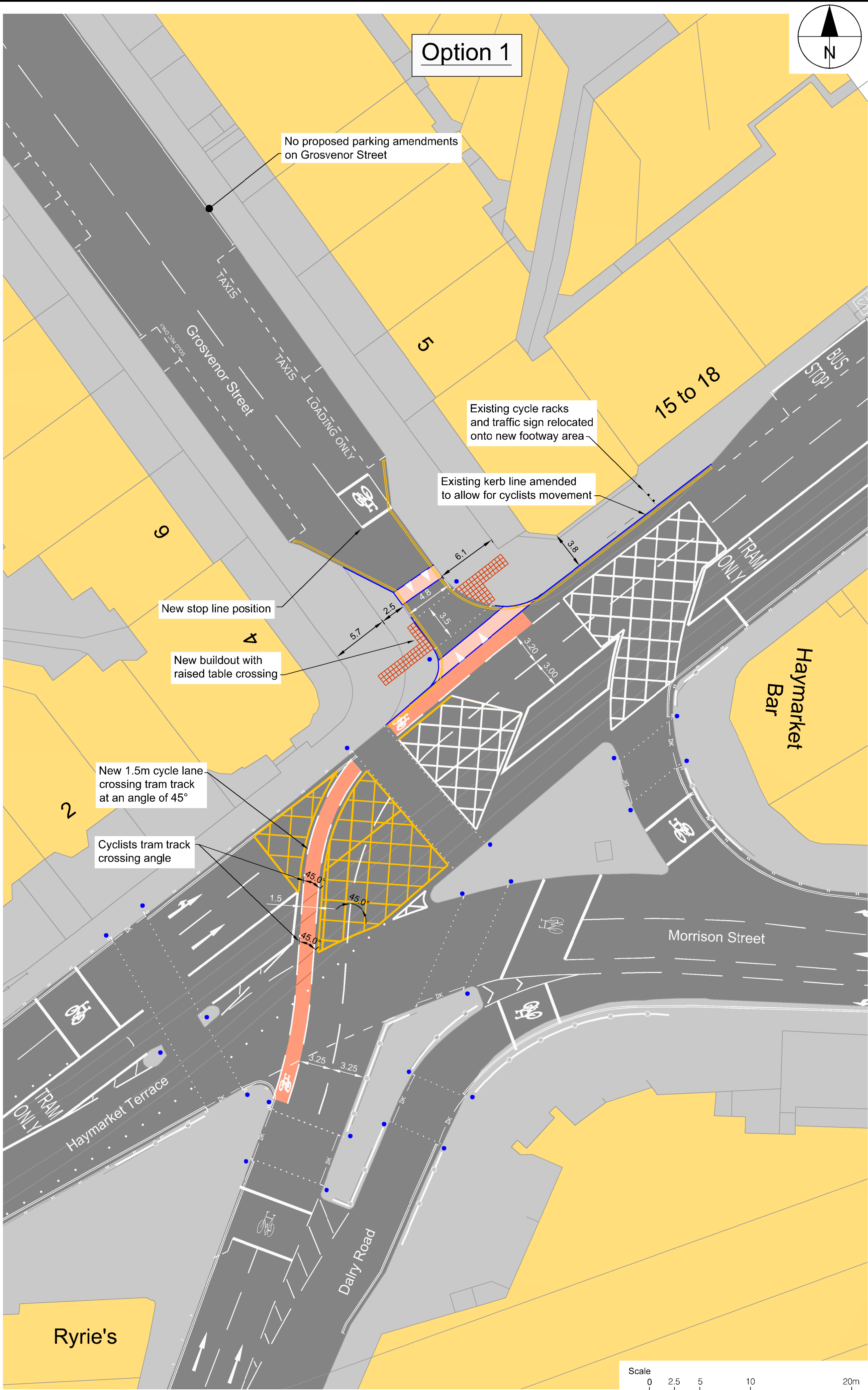
4.4.2 HAYMARKET STATION
PUBLIC CONSULTATION PLAN

60487449-DD-C-WP1-4.4.2-2001

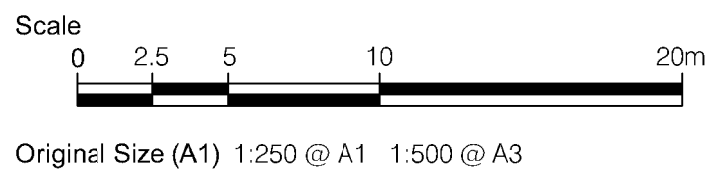
File name: F:\PROJECTS\TRAFFIC - CEC WALK CYCLE WP\103 EXECUTION\CAD\20-SHEETS\4.0 - TRAM\4.4.3 PUBLIC CONSULTATION PLANS\60487449-DD-C-WP1-4.4.3-2001.DWG
Last saved by: NESSUK Last Plotted: 2016-03-12
Project Management Initials: Designer: JN Checked: WP Approved: PM ISO A1 894mm x 841mm



Existing Layout



Proposed Layout



PROJECT

CYCLE AND WALKING IMPROVEMENTS ON TRAM ROUTE

CLIENT

EDINBURGH THE CITY OF EDINBURGH COUNCIL

CONSULTANT

AECOM
1 Tanfield
EDINBURGH, EH3 5DA
+44 (0) 131 301 8600 tel
+44 (0) 131 301 8699 fax
www.aecom.com

NOTES

Key

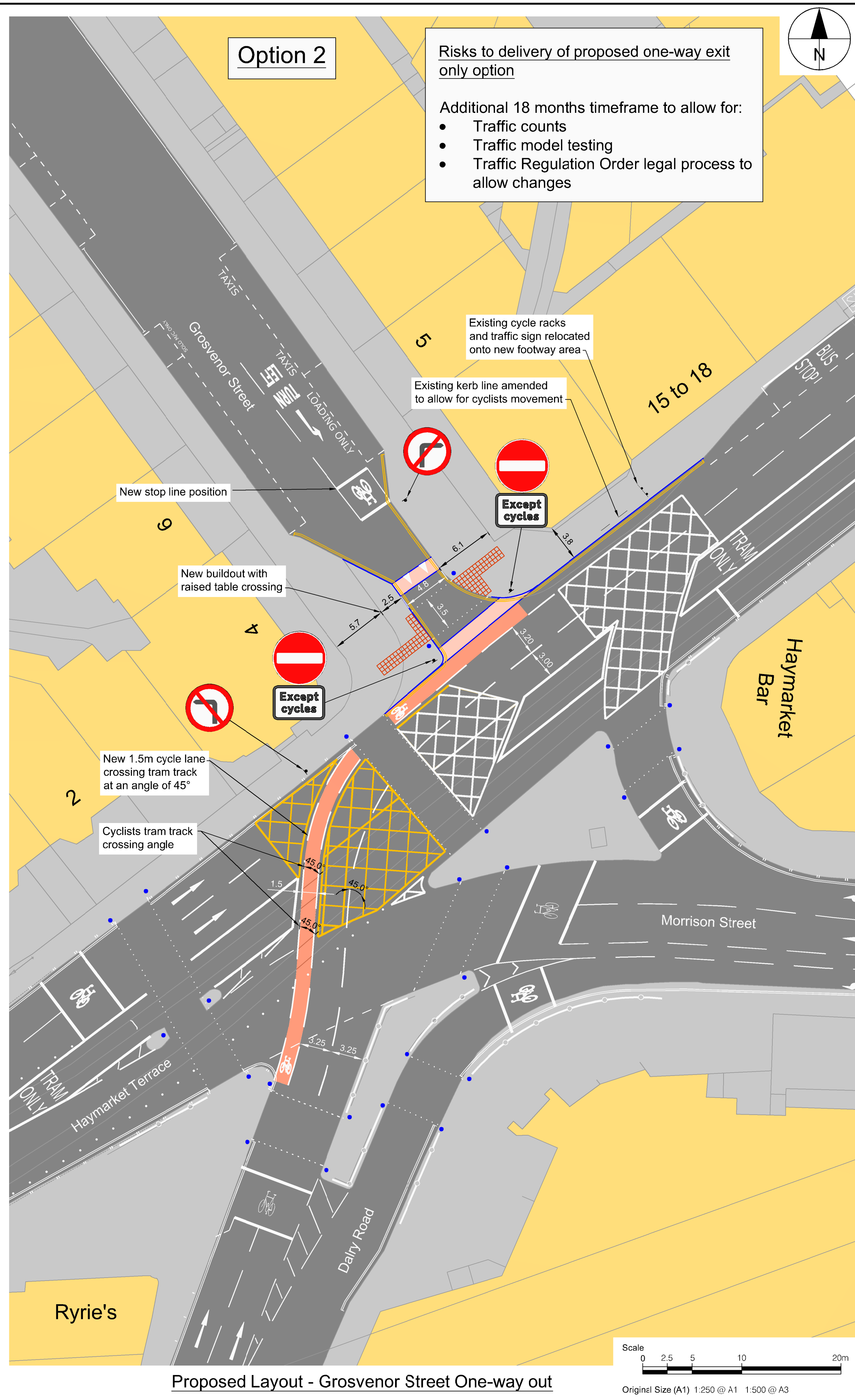
- New kerbline
- Road markings
- Road
- Footway
- Cycle lane (red anti-skid surfacing)
- Building
- Ramp
- Tactile paving - controlled
- Traffic signal pole

SHEET TITLE

4.4.3 HAYMARKET JUNCTION DALRY ROAD TO WEST MAITLAND ST PUBLIC CONSULTATION PLAN

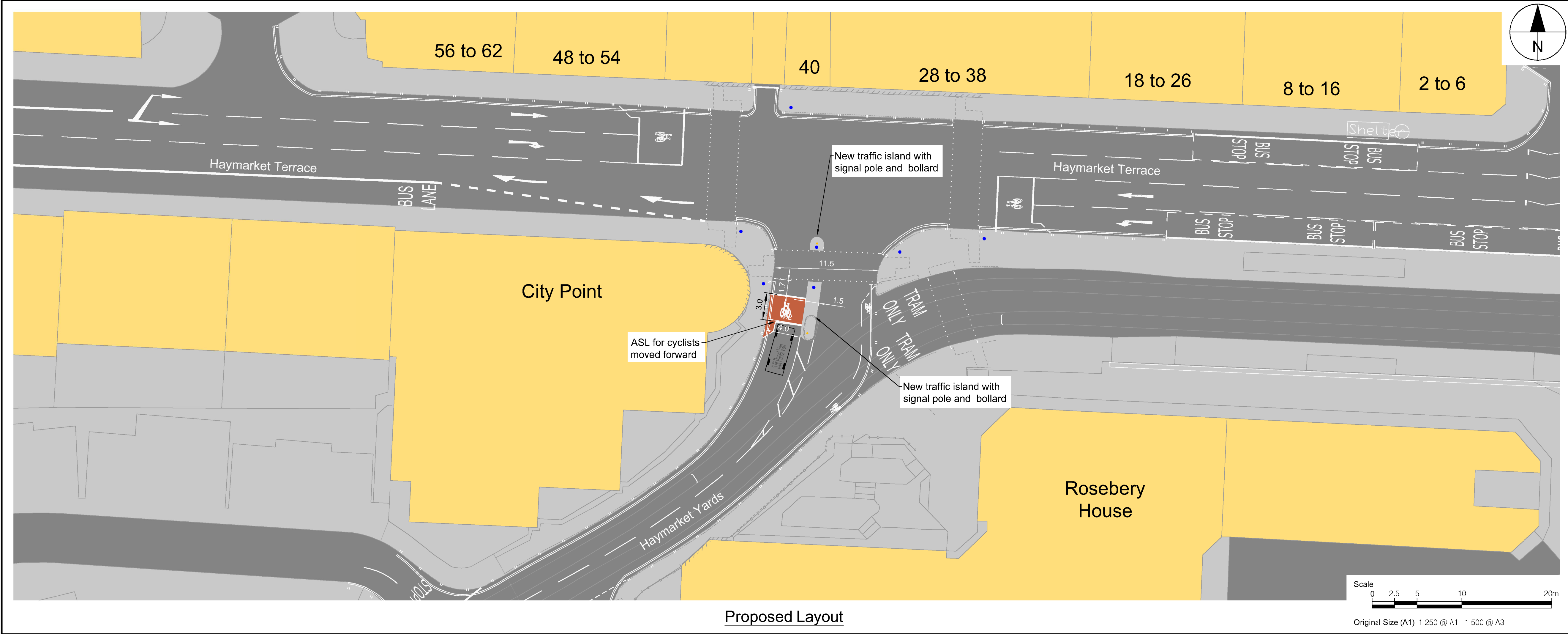
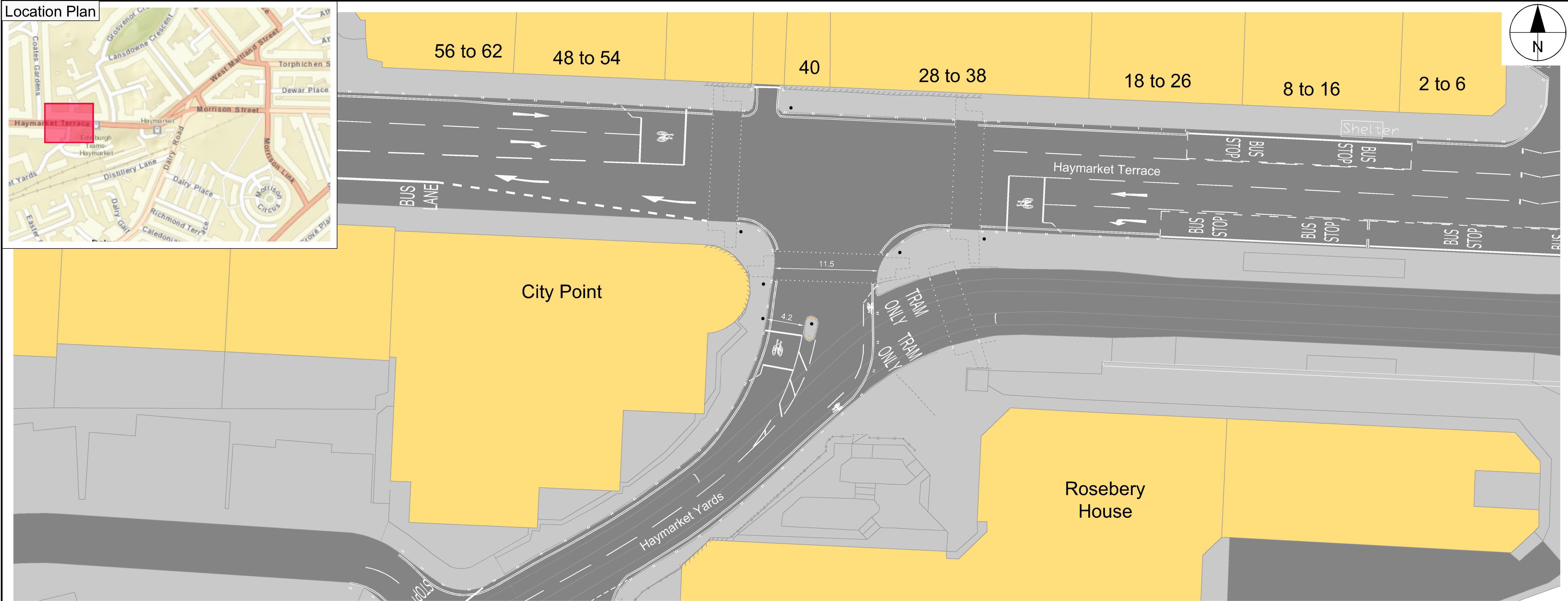
60487449-DD-C-WP1-4.4.3-2001

This drawing has been prepared for the use of AECOM's client. It may not be used, modified, reproduced or relied upon by third parties, except as agreed by AECOM or as required by law. AECOM accepts no responsibility, and denies any liability whatsoever, to any party that uses or relies on this drawing without AECOM's express written consent. Do not scale this document. All measurements must be obtained from the stated dimensions.



ISO A1 894mm x 841mm
Approved: PM
Checked: WP
Designer: JN
Project Management Initials:

Filename: F:\PROJECTS\TRAFFIC - CEC WALK CYCLE WP\103 EXECUTION\CAD\20-SHEETS\4.0 - TRAM\4.4\1P PUBLIC CONSULTATION PLANS\60487449-DD-C-WP1-4.4-2001.DWG
Last saved by: NESSUK
Last Plotted: 2016-03-12



AECOM

PROJECT

CYCLE AND WALKING IMPROVEMENTS ON TRAM ROUTE

CLIENT

EDINBURGH
THE CITY OF EDINBURGH COUNCIL

CONSULTANT

AECOM
1 Tanfield
EDINBURGH, EH3 5DA
+44 (0) 131 301 8600 tel
+44 (0) 131 301 8699 fax
www.aecom.com

NOTES

Key

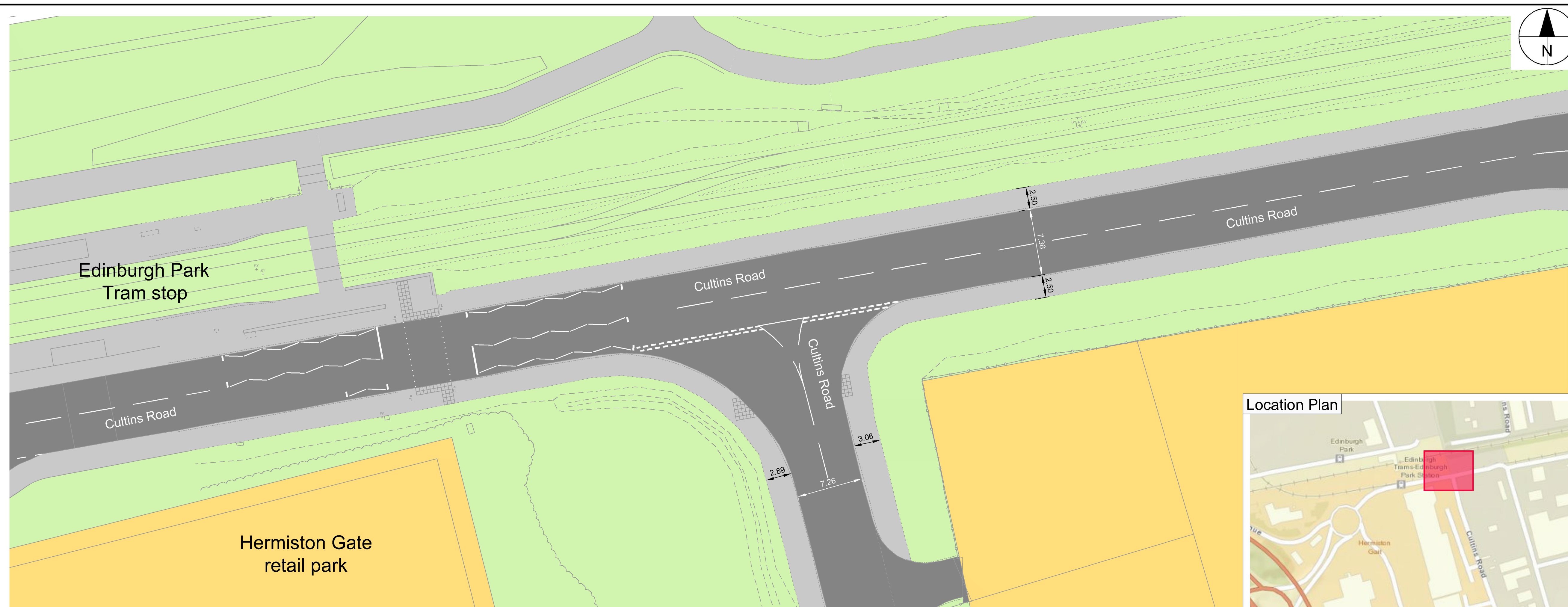
- New kerbline
- Road markings
- Road
- Footway
- Cycle lane (red anti-skid surfacing)
- Building
- Traffic signal pole
- Traffic bollard

SHEET TITLE

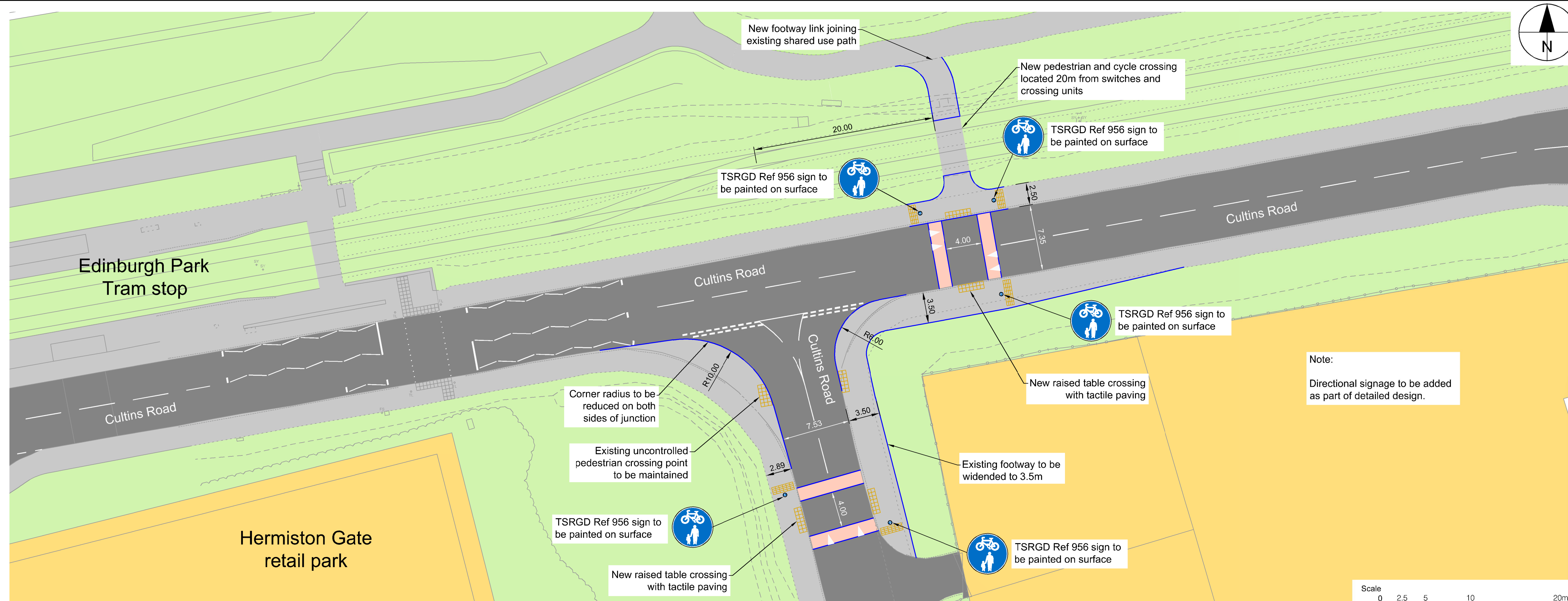
4.4.4 HAYMARKET YARDS PUBLIC CONSULTATION PLAN

60487449-DD-C-WP1-4.4-4-2001

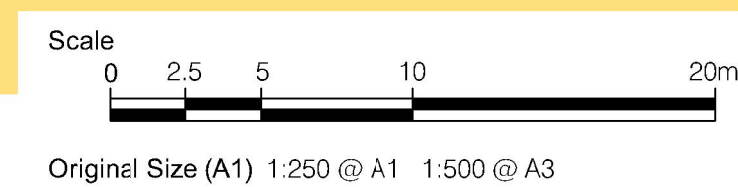
This drawing has been prepared for the use of AECOM's client. It may not be used, modified, reproduced or relied upon by third parties, except as agreed by AECOM or as required by law. AECOM accepts no responsibility, and denies any liability whatsoever, to any party that uses or relies on this drawing without AECOM's express written consent. Do not scale this document. All measurements must be obtained from the stated dimensions.



Existing Layout



Proposed Layout



This drawing has been prepared for the use of AECOM's client. It may not be used, modified, reproduced or relied upon by third parties, except as agreed by AECOM or as required by law. AECOM accepts no responsibility, and denies any liability whatsoever, to any party that uses or relies on this drawing without AECOM's express written consent. Do not scale this document. All measurements must be obtained from the stated dimensions.