

WAVEGARDEN BRIDGE AND CYCLE LINK PRE-APPLICATION ENGAGEMENT

INTRODUCTION

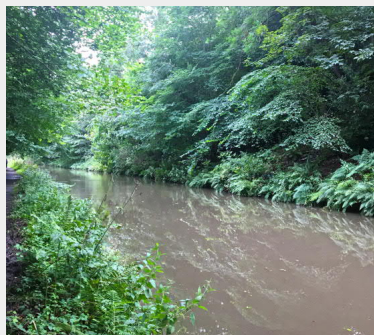
The City of Edinburgh Council (CEC) has carried out a feasibility study assessing options for providing a direct and accessible shared cycle/pedestrian connection between the Union Canal towpath, part of National Cycle Route (NCR 754), and the Edinburgh International Climbing Arena (EICA) at Ratho.

The study has also considered the provision of a new shared cycle/pedestrian crossing over the Union Canal, linking the EICA with proposals to develop a Country Park and state-of-the-art surfing centre (the Wavegarden) in the old Craigpark Quarry site.

The proposed study area is located approximately 12 miles west of Edinburgh city centre, 2.5 miles to the west of Ratho and 3 miles south of Newbridge.

UNION CANAL

Constructed between 1818 and 1822, the Union Canal runs from Falkirk to Edinburgh. Its original purpose was to transport coal from the west to Edinburgh and distribute stone from Ratho Quarry to the central belt. In 1849, the Edinburgh and Glasgow Railway Company took ownership, and from 1849 to 1933 the canal continued to thrive, with new structures built.



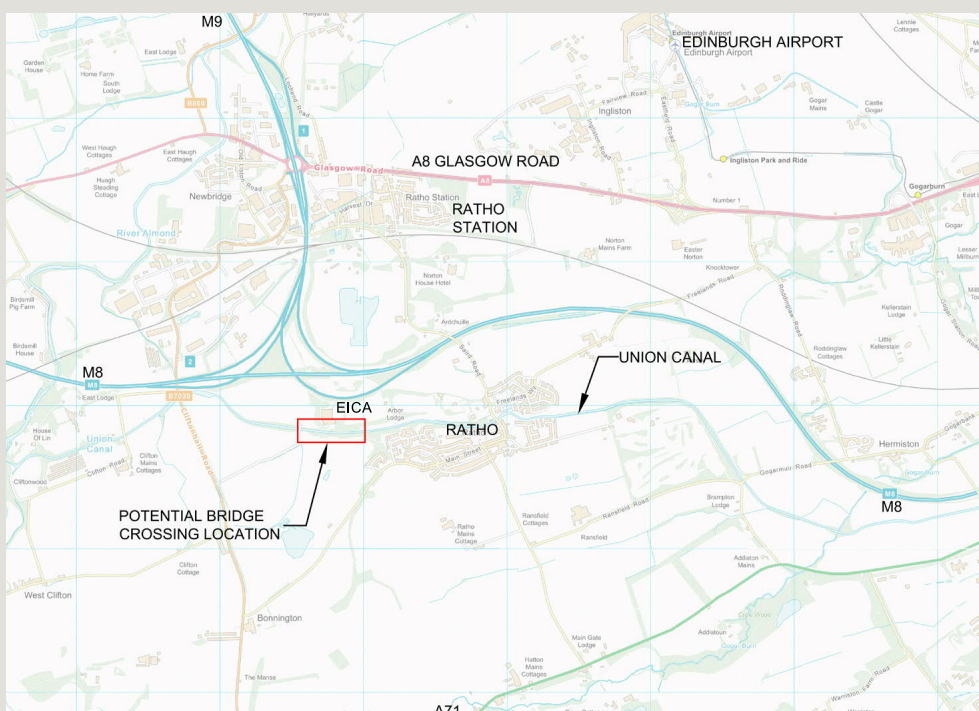
However, with new modes of transport and types of energy being introduced, the use of the canal fell into a steady decline, until it was formally closed to water traffic. In 2001, the canal was reopened as part of the Millennium Link, a project which has been steadily restoring Britain's canal network. The Union Canal in this area is designated as a Scheduled Monument.

EICA

The EICA is owned by the City of Edinburgh Council and managed by Edinburgh Leisure. The disused quarry once supplied stone to the central belt but has been unused since the turn of the 20th century. In 1995, the quarry was purchased and developed into a climbing arena.



In 2018, the EICA attracted over 250,000 visitors to enjoy a range of activities from primary climbing, bouldering, abseiling, clip and climb-related facilities to soft play, gym and fitness studios and using the conference and events suites.



ROAD ACCESS

Road access to the EICA is from a dedicated junction on the B7030 Cliftonhall Road, which connects the A89 Edinburgh Road with the A71 at Wilkieston.

Strategic access to the EICA from the surrounding motorway and trunk road network can be taken from the Newbridge Junction, serving demand from the north and west (from the M8 and M9), and from the south and east, via the Calder Road junction with the A720 City of Edinburgh Bypass.

There is no direct bus route serving the EICA, but Lothian Buses' service 20 operates from Edinburgh city centre, with stops in Newbridge as well as in the village of Ratho.



This exhibition is intended to record public views on the proposals as part of the pre-application consultation process.

Please complete a questionnaire and feedback form to help us gather a comprehensive set of points of view.