

LEITH LINKS ACTIVITY HUB

THE SITE...

What are we doing ?

The City of Edinburgh Council's Thriving Green Spaces Project is producing a masterplan for a new Leith Links Activity Hub. This sets out a range of proposals for a fun and inclusive activity zone within Leith Links.

The following proposals have been developed by Atkins Landscape Architects and Architects in collaboration with Working Groups made up of Council staff, representatives from local organisations and members of the Leith community.

The proposals are now on display during a six-week public consultation period to gain feedback from the Leith community and park users. These boards will be available online on the Council's Consultation Hub from 8th September until 20th October 2023. Take a look and let us know what you think of the proposals.

Have a look at the Activity Hub proposals on the boards and tell us what you think.

Please scan the QR codes on these boards and let the Council know your thoughts about the proposals through the online survey.

If you missed the public consultation event, you can still see the boards online and fill out the survey online until 20th October.



How can you help ?

Existing Site Photos

1. Limited connection to wider Leith Links park
2. Uninviting entrance with unnecessary separation of two gates
3. Degraded and disused bowling greens are under utilised spaces
4. Narrow and obstructed connection to wider park
5. High hedging isolates space and encourages anti-social behaviour
6. Disused former club house which lacks identity and purpose



Existing Site Conditions

What informs this project ?

- The Edinburgh Green Blue Network & Climate Ready Edinburgh
- The Edinburgh Nature Network
- Principles from the '20 minute neighbourhood' approach
- Linking Leith's Parks
- Engagement with the Leith Links Activity Park Group
- Research from 'Make Space for Girls'
- Desk-based analysis & Site Visits

Developed in 2022, the Leith Links Masterplan outlined a wide range of improvements to be implemented in the park from natural play to a museum mural as well as wildflower meadows to swales and rain gardens. However, the main opportunity for improving Leith Links' appearance and activity levels within the park is a proposal for an Activity Hub located on the former bowling green site.

Existing Masterplan



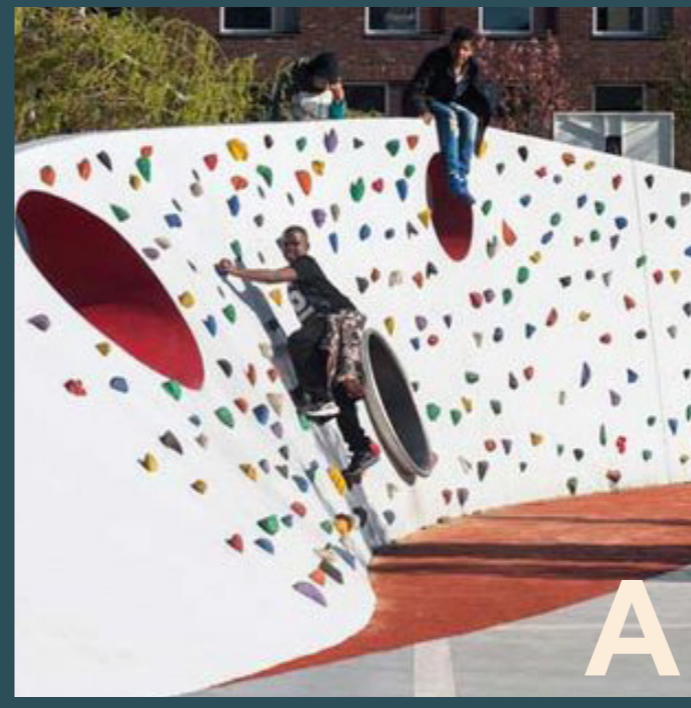
LEITH LINKS ACTIVITY HUB

PROPOSALS...

Bouldering Rocks

Outdoor bouldering could be integrated into the Activity Hub area. The objectives for this space are:

- Inclusive of a range of ages
- Suitable for a range of skill levels
- Routes that can be changed and reset



Pump Track / Bike Trail

A 'pump track': a circuit that is typically catered for older children/adolescents with a series of banked turns and humps. Current proposals would look to construct this track from concrete for long-term durability and its capacity to provide suitable surface for multiple types of users. From young children on scooters to adults, this space would be suitable for mountain bikes, BMX-style bikes, skateboards, roller skaters and could even be made wheelchair accessible.

or:

A 'bicycle safety area': a circuit that typically caters to younger children. This would be a flat track that provides a space for children to learn about how to cycle safely.



Parkour & Street Gym

Outdoor gym equipment is already provided in some areas of Leith Links, however there is the opportunity to provide equipment that provides a unique and free-form chance for exercise. In order to provide this experience, equipment would be selected based on its ability to be used creatively in a variety of ways - providing maximum benefit for a range of users.



Roller Rink

Roller Rink will be flat space suitable for large integrated artwork to reflect the local community's creativity. As clear, flat space, this area will be suitable for all kind wheel based activities but will also be suitable for integrating various sporting activities.

A basketball hoop could be included within the space as well as other games for all ages woven into the floor markings and artwork to ensure this space is multi-functioning.



Social Seating

Seating is vitally important in the Activity Hub and will aim to cater to a range of user groups, such as:

- Family groups
 - Parents watching over their children play
 - Teens socialising
 - Older people
 - Wheelchair/mobility scooter users
- Additional features could include:
- Picnic tables
 - Seating at various heights
 - Armrests and backrests
 - Chess/checker tables
 - Seating clusters/creative benches for a multitude of sitting/gathering styles.

Streetscape Style Skatepark



Designing the skatepark will require input from a specialist skatepark firm, but we will be working very closely with them and the Skatepark Working Group to help shape the ultimate design.

The skating area is envisioned to be a flagship skatepark location within the city of Edinburgh. Taking inspiration from 'streetscape' style skateparks around the world, a key objective of the area will be to cultivate an inclusive atmosphere by integrating planting and seating across the space. A range of features, facilities and textures, will be used to encourage creative use of the skating space across a broad range of ages, skill levels and skating types.



Mixed-Age Play Zone

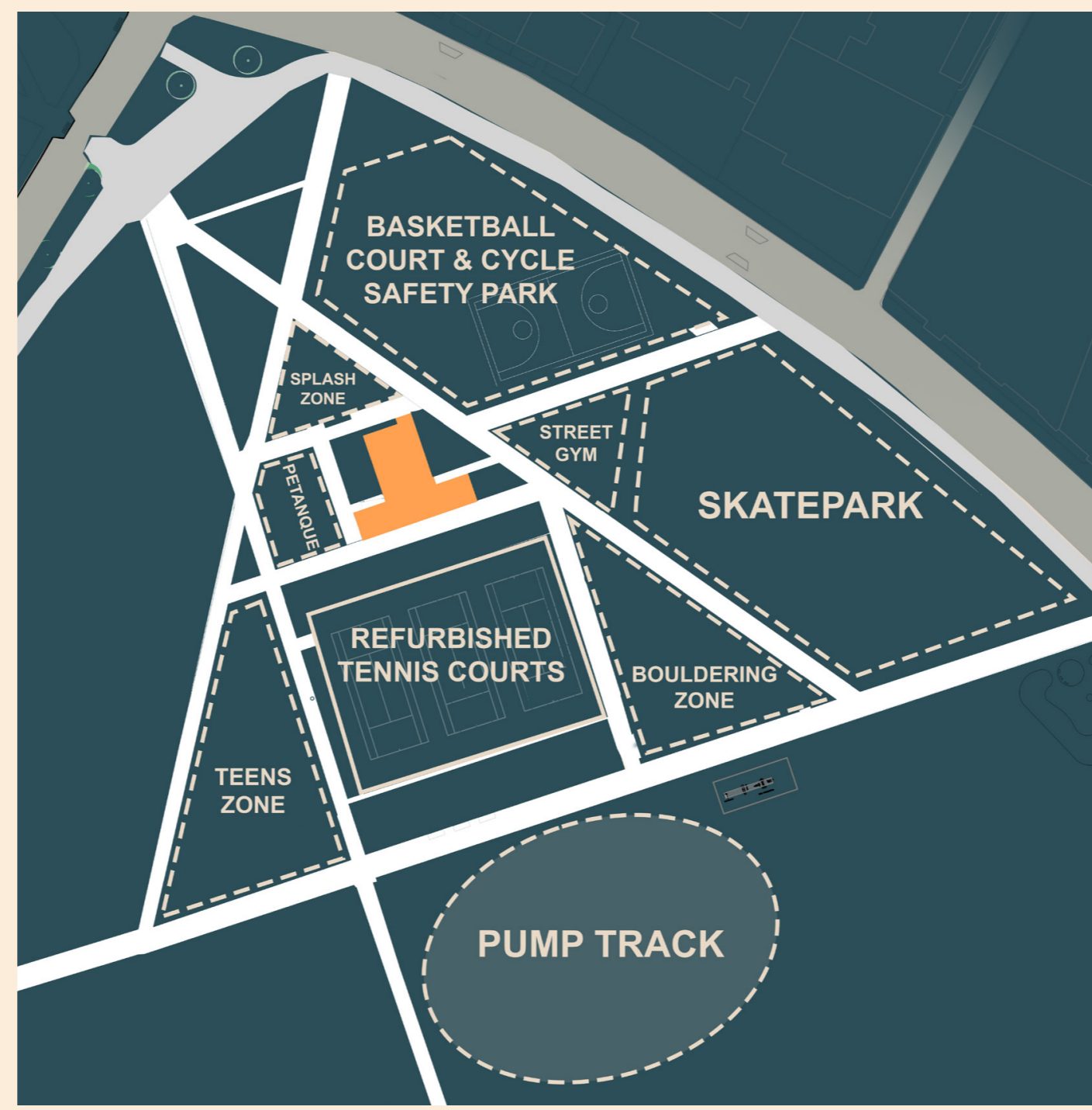
Play equipment that provides room for imagination and multiple uses would be good to include within the Activity Hub. Features would be selected for their flexibility and suitability for a range of ages. This area could therefore be designed as a multi-sensory, accessible and inclusive space suitable for all abilities and age groups.

Strategy Zoning Diagram



LEITH LINKS ACTIVITY HUB

PROPOSALS...



Alternative Features

Other activities that could also be included within the area include:

- F) Children's Water Play / Splash Zone
- G) A bike safety learning course
- H) Basketball Court
- I) Petanque Court
- J) Play zone aimed at teenagers

The objective of the Activity Hub is to provide alternative facilities that are not otherwise available within Leith Links or in the nearby area. We would be keen to hear if there are any other alternative sports, facilities or activities that could be included within this space.



Entrance Concept

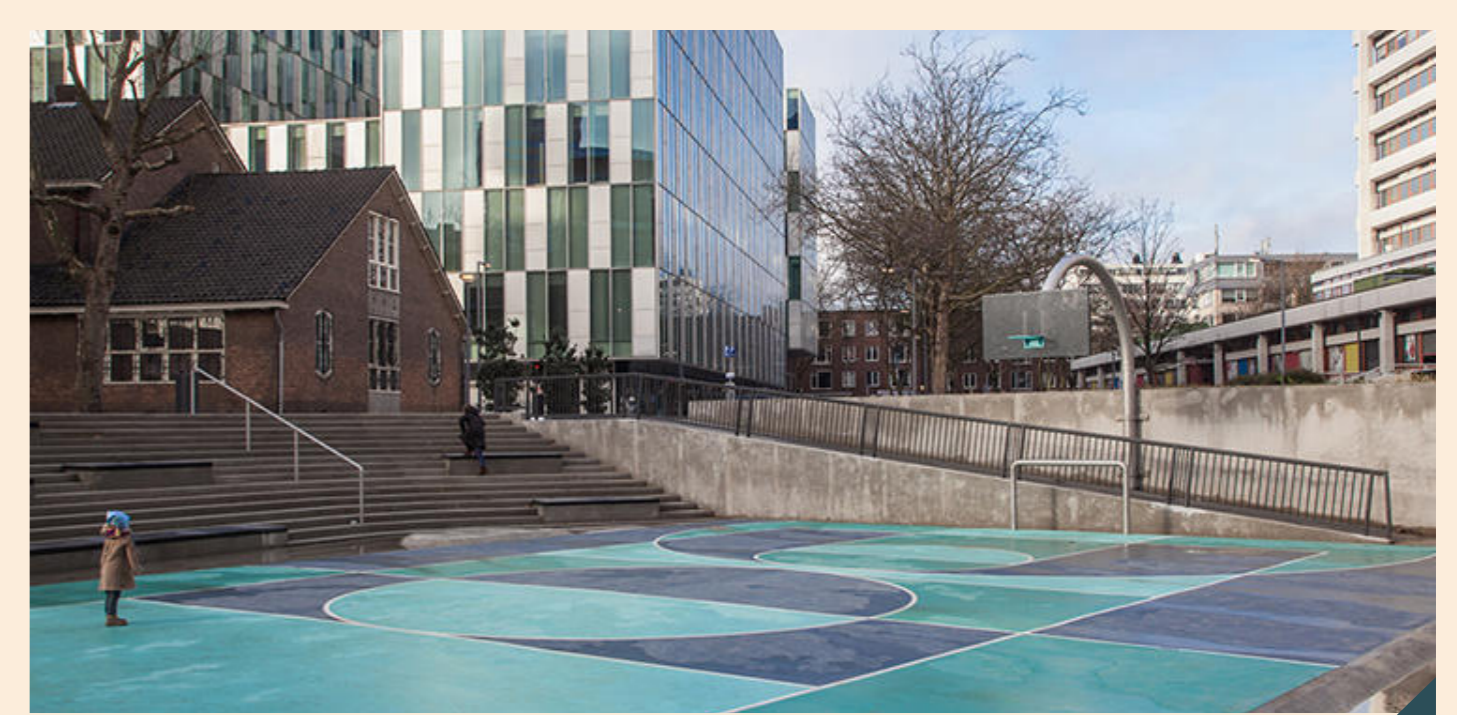
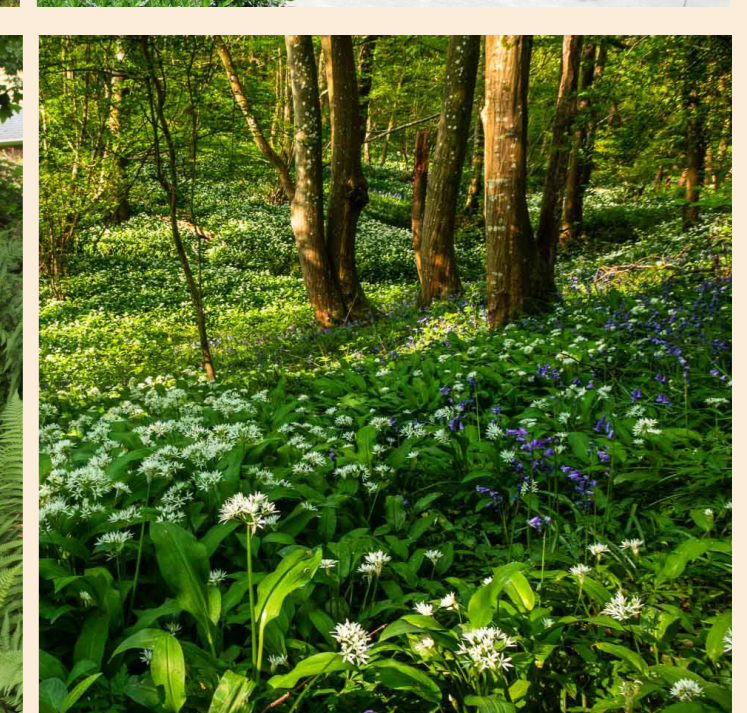
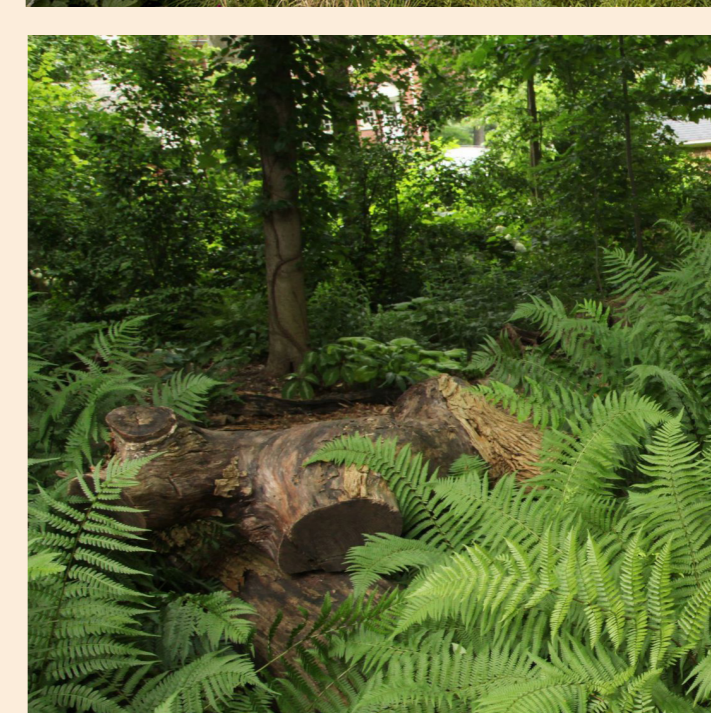
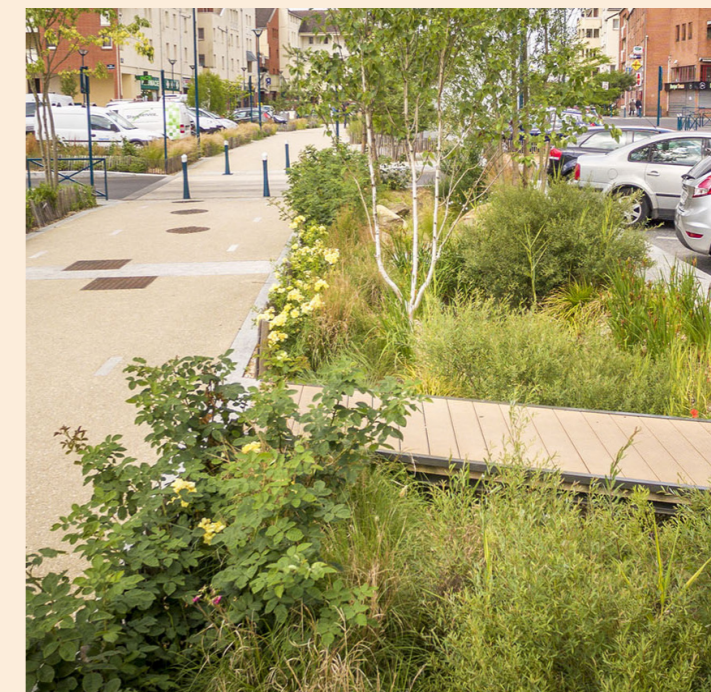


Green & Blue Infrastructure

Rain Gardens are a type of Sustainable Drainage System (SuDS) which are being used to alleviate the negative impacts of extreme rainfall. Rain gardens intercept surface water, capture pollutants and reduce stress on the combined sewer system.

In early 2023 a wildflower meadow was successfully created on the Western side of Leith Links - as part of the Wilding Wee Spaces project. Our intention for any further wildflower meadow areas would be to build upon this success, extending the influence of the project. The inclusion of more wildflower areas would also contribute to the Linking Leith's Parks project - part of the Edinburgh Nature Network scheme.

The woodland walk is intended to provide a biodiverse area of the park where the existing mature trees will be accompanied by native understorey planting, hibernaculas and areas of dead-wood.



It may be necessary to use some of the Activity Hub area for stormwater storage. Dependent on the result of the Leith SuDS study, the Roller Rink could potentially support this additional function.

Stormwater Management



LEITH LINKS ACTIVITY HUB

THE PAVILION...

Treehouse Pavilion



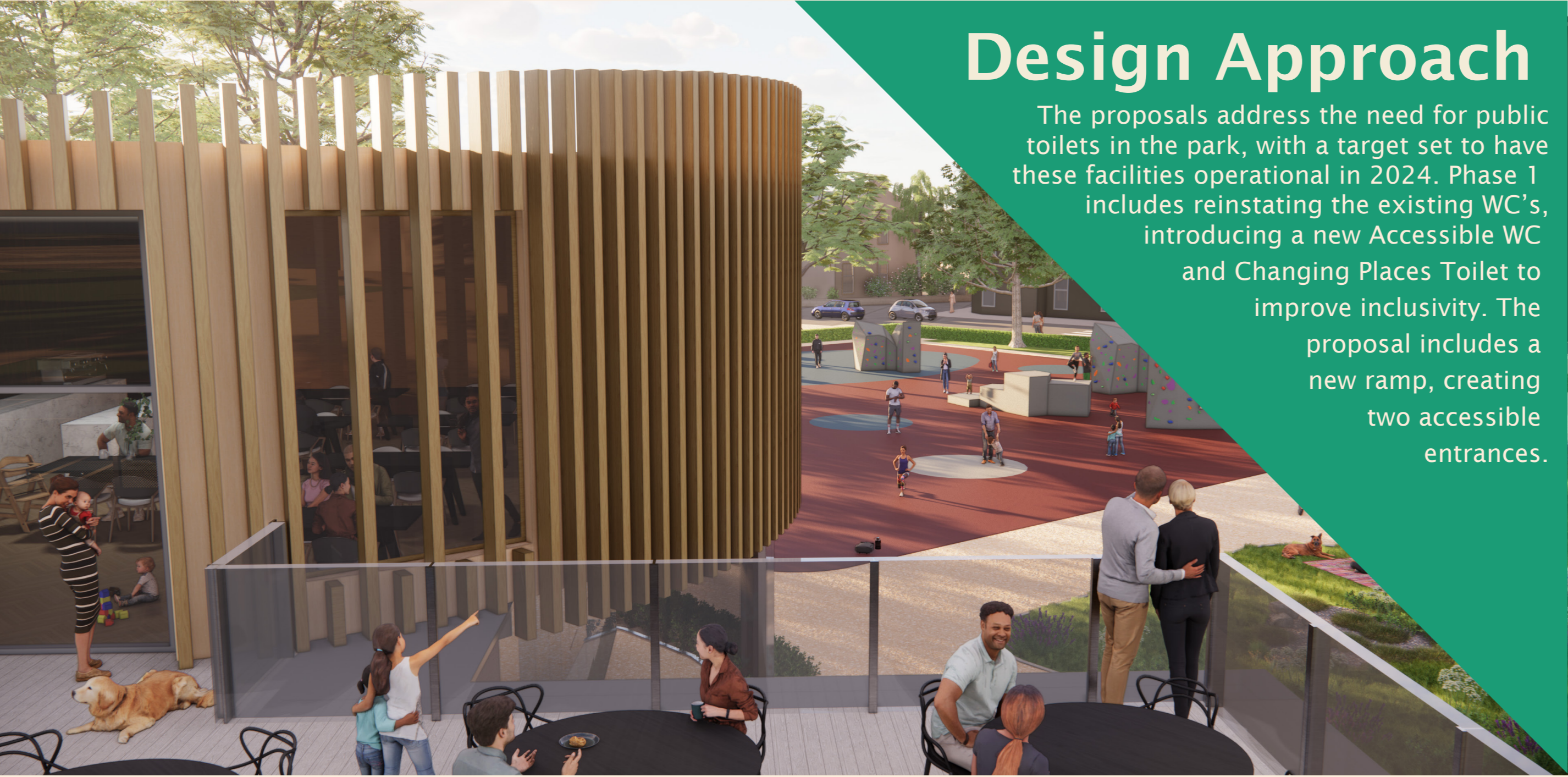
Pavilion facilities

- Public Toilets
- Accessible Toilets
- Changing Places Rooms
- Ground Floor Cafe
- Community Room
- Roof Terrace
- Restaurant



Design Approach

The proposals address the need for public toilets in the park, with a target set to have these facilities operational in 2024. Phase 1 includes reinstating the existing WC's, introducing a new Accessible WC and Changing Places Toilet to improve inclusivity. The proposal includes a new ramp, creating two accessible entrances.



Phase 2 includes the refurbishment of the former changing rooms into a new café and community meeting room. Among the potential upgrades, a second-storey extension will be carefully considered, offering a view of the new activity zone. This extension will feature a new restaurant and roof terrace that overlooks the existing tennis courts.

Phased Delivery

Ground Floor



First Floor

